

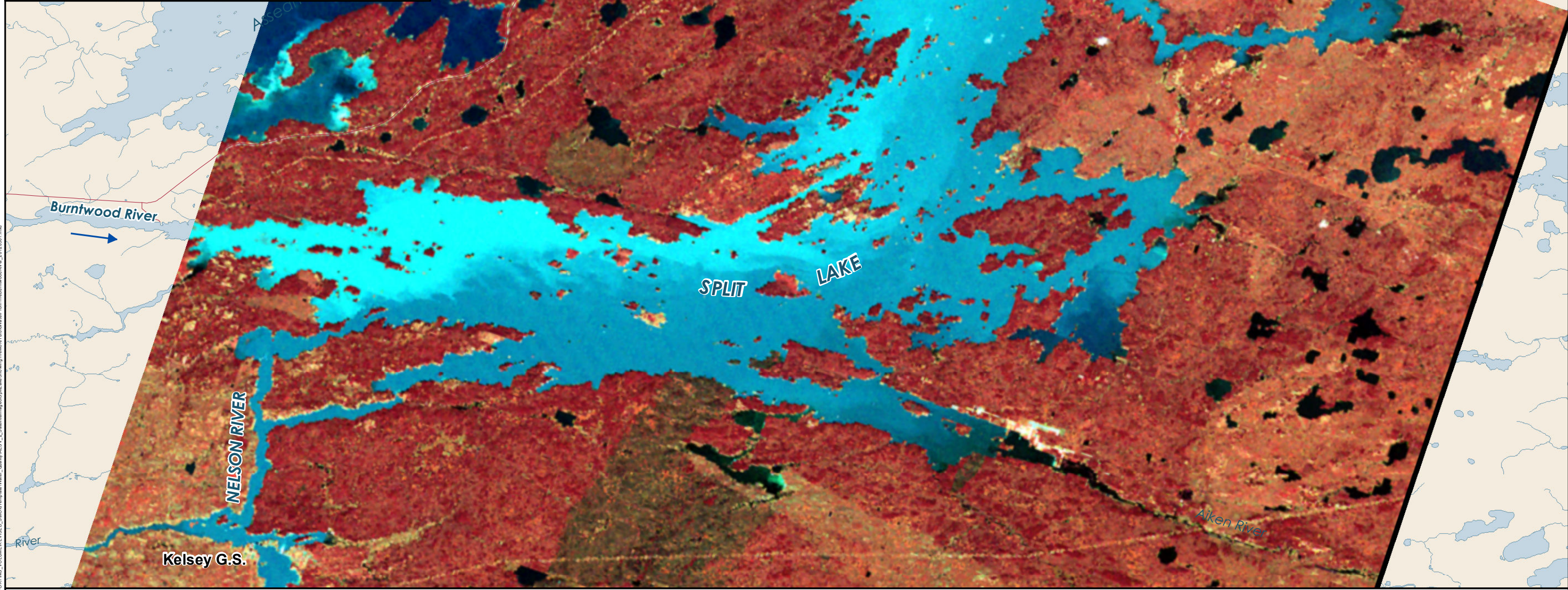
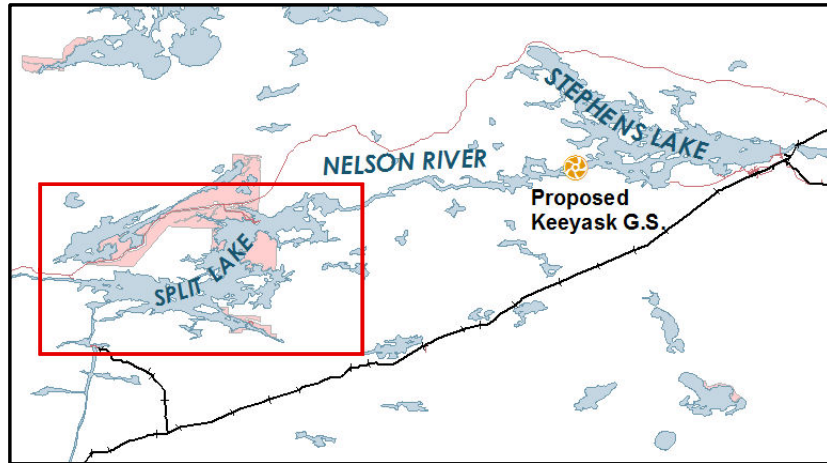


Keeyask Generation Project Environmental Impact Statement

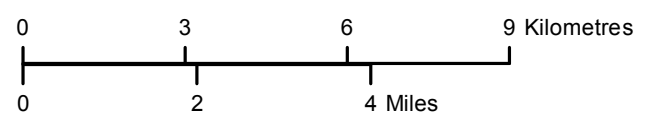
Supporting Volume Aquatic Environment



June 2012



File Location: G:\EE\Keeyask\Publinf... \VOL\REVISED_S&PO\Template\Water_Quality\MESV_2_Satellite\gcs\split_aster\Keeyask_Turbidity_20120901.mxd



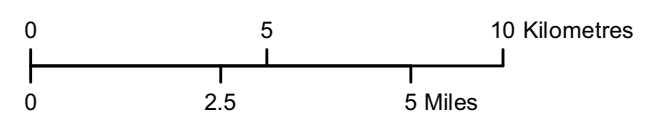
Projection: UTM Zone 15, NAD 83
Data Source: NTS base 1:50 000
Image Source: ASTER sensor, Terra Satellite
15m resolution, September 2004

Satellite Image of Split Lake Showing the More Turbid Water From the Burntwood River



Legend

- 2004 Winter Dissolved Oxygen Sampling Sites

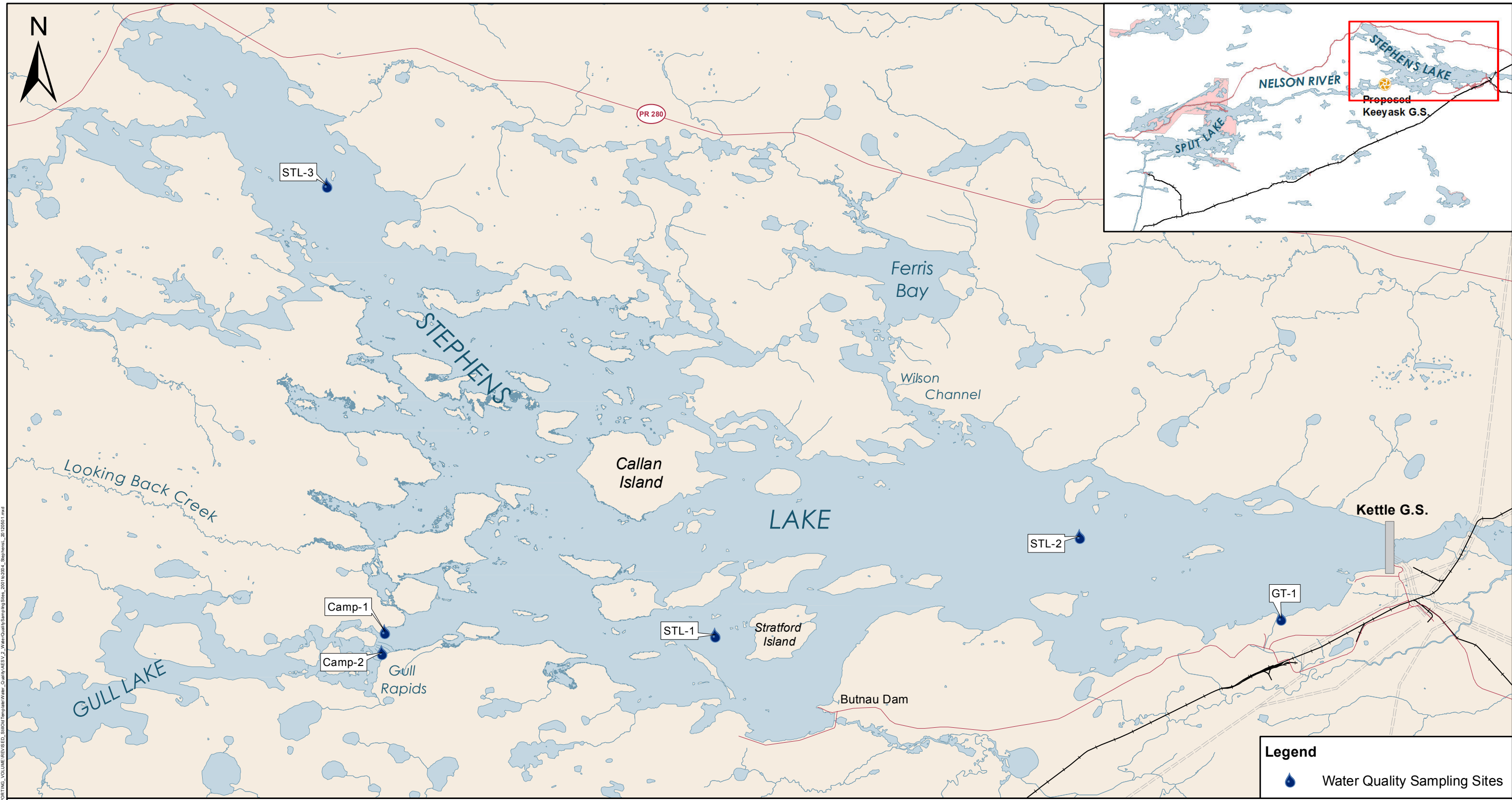


Projection: UTM Zone 15, NAD 83
 Data Source: NTS base 1:50 000,
 Stephens Lake Shoreline-Quickbird@Digitalglobe, 2006
 Nelson River Shoreline modelled by Manitoba Hydro


Dissolved Oxygen Concentrations - Winter 2004

Keeyask and Stephens Lake Areas

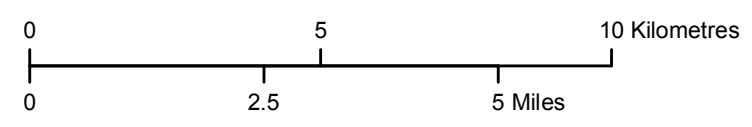
File Location: G:\EEB\Keeyask\Shoresh\MOCS\SUPPORTING_VOLUMES\REVISED_Support\Temp\Water_Quality\REV_2_DissolvedOxygenConcentrations_Winter2004_KA_StephensL_20120901.mxd



Legend

-  Water Quality Sampling Sites

R:\Location\GIS\Keeyask\shp\mxd\SUPPORTING_VOLUME\REVISED_SupportingWaterQuality\ESV_2_WaterQualitySamplingSites_2001to2004_Stephens_20120801.mxd



Projection: UTM Zone 15, NAD 83
 Data Source: NTS base 1:50 000,
 Stephens Lake Shoreline-Quickbird@Digitalglobe, 2006
 Nelson River Shoreline modelled by Manitoba Hydro

Water Quality Sampling Sites 2001-2004

Stephens Lake Area