

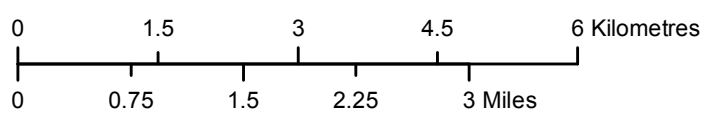
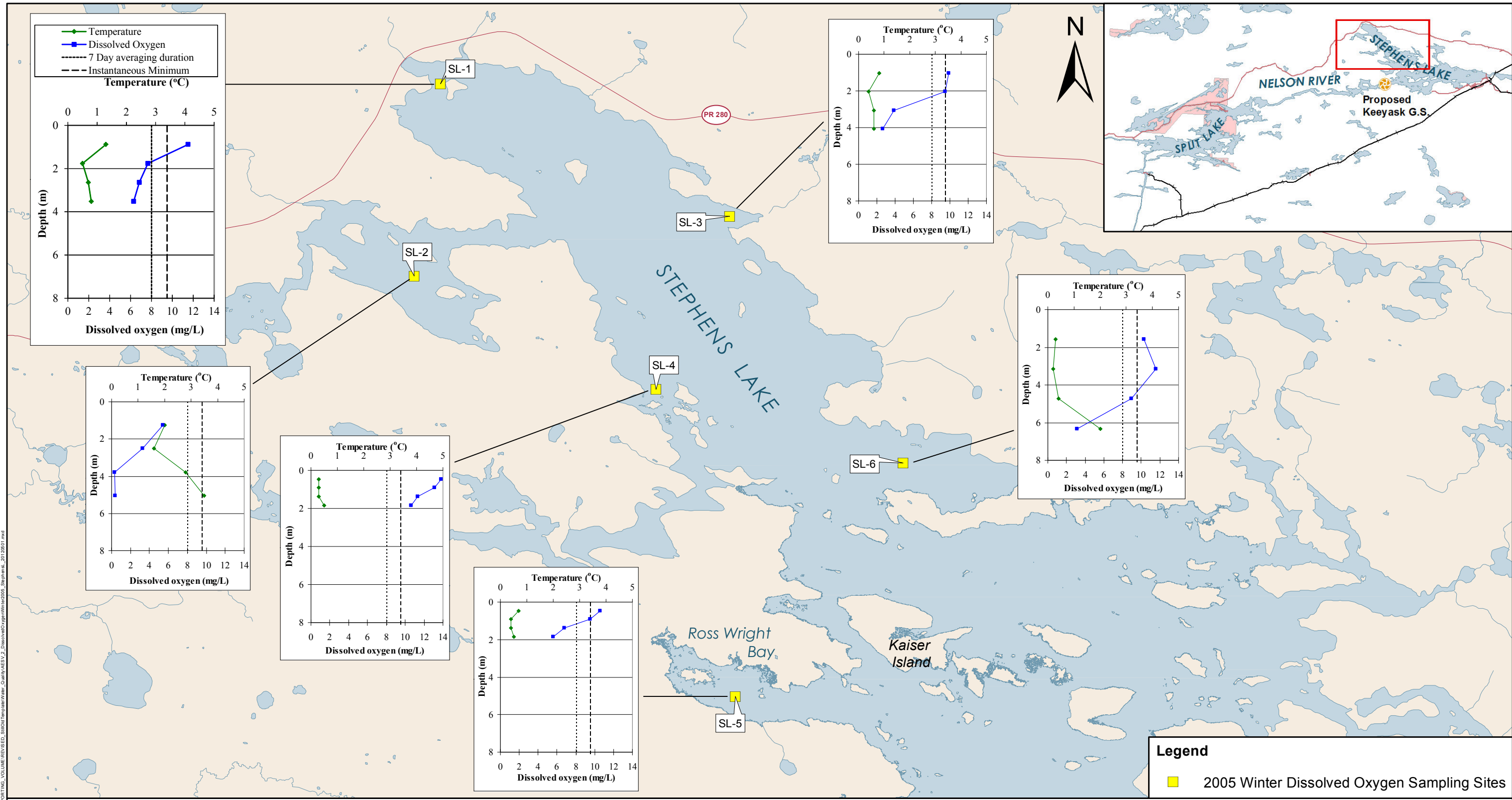


# Keeyask Generation Project Environmental Impact Statement

## Supporting Volume Aquatic Environment



June 2012

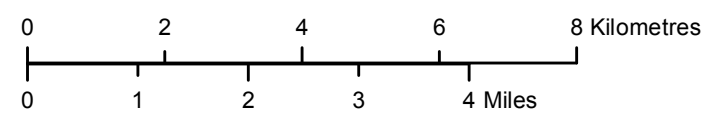
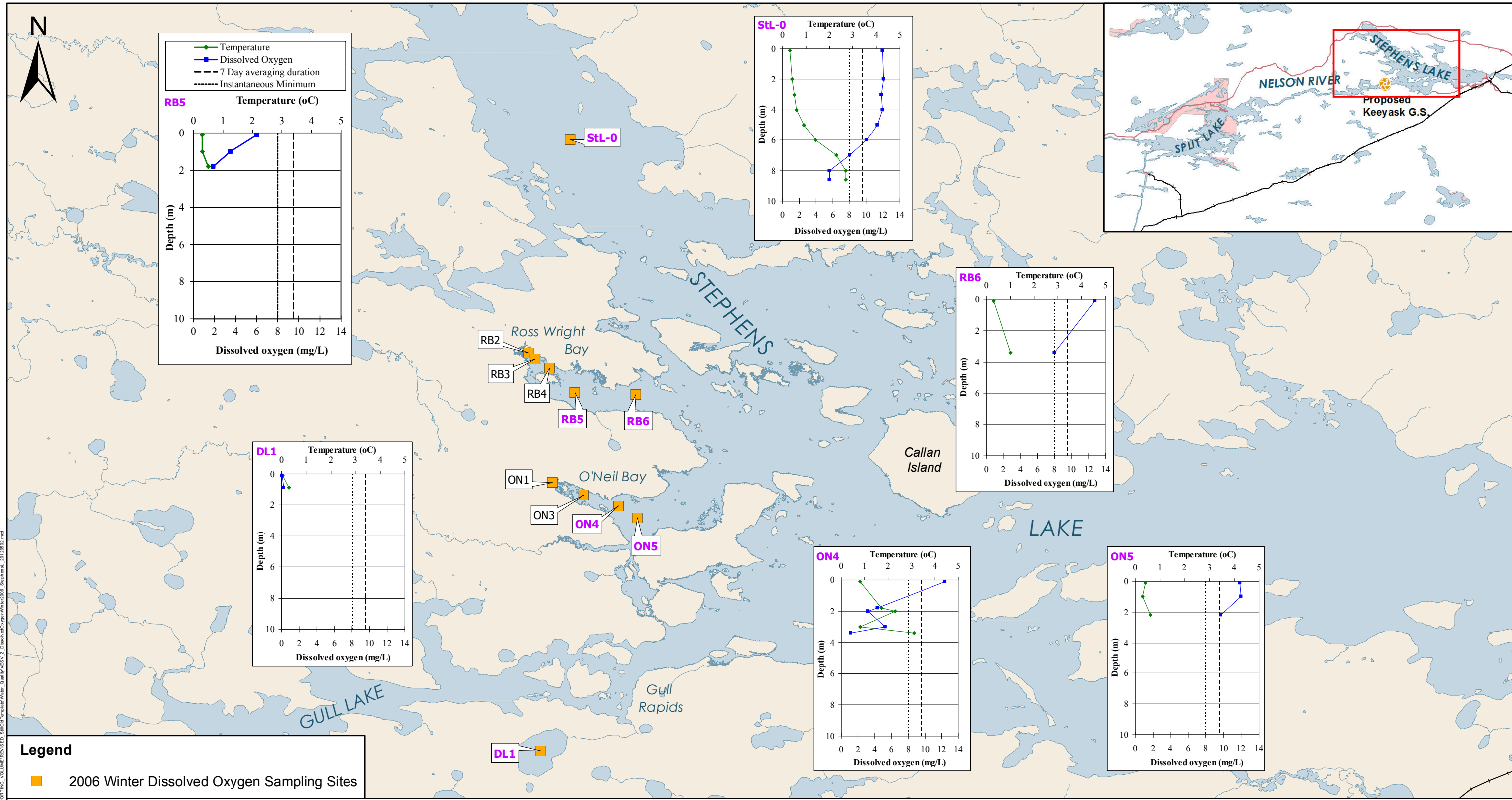


Projection: UTM Zone 15, NAD 83  
 Data Source: NTS base 1:50 000,  
 Stephens Lake Shoreline-Quickbird@Digitalglobe, 2006  
 Nelson River Shoreline modelled by Manitoba Hydro

## Dissolved Oxygen - Winter 2005

### Stephens Lake Area

File Location: G:\EEB\Keeyask\Shoreline\_Maps\SUPPORTING\_VOLUMES\REVISED\_SUPPORT\Temperature\Water\_Quality\ESV\_2\_DissolvedOxygen\Winter2005\_StephensL\_2012001.mxd

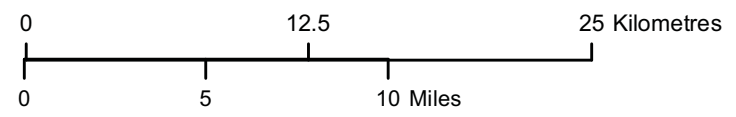


Projection: UTM Zone 15, NAD 83  
 Data Source: NTS base 1:50 000,  
 Stephens Lake Shoreline-Quickbird@Digitalglobe, 2006  
 Nelson River Shoreline modelled by Manitoba Hydro

## Dissolved Oxygen - Winter 2006 Stephens Lake



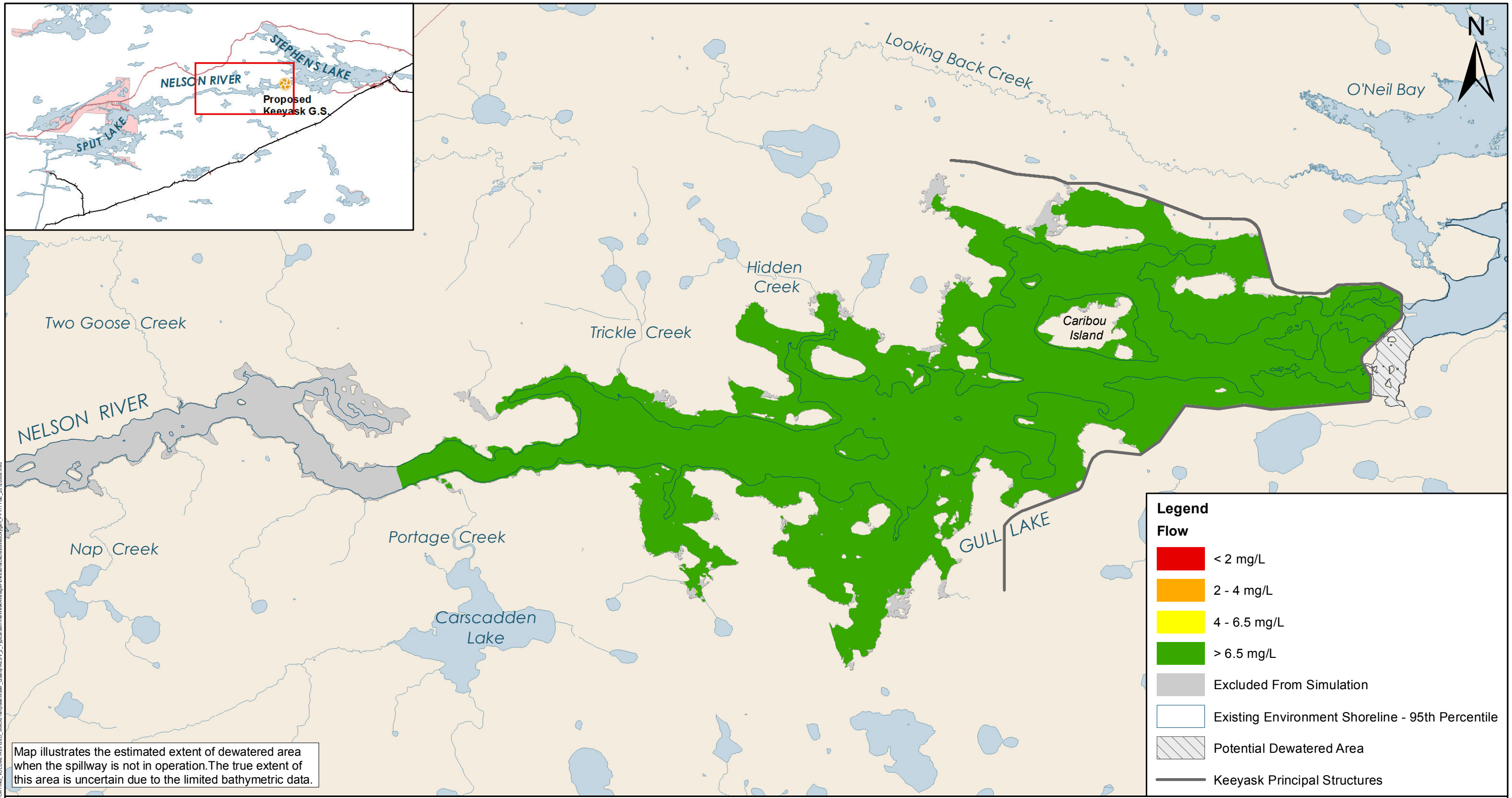
File Location: G:\EE\Keeyask\Substn\_Maps\SUPPORTING\_VOLUME\REVISED\_SROD\Templates\Water\_Quality\Sites\_2001\_to\_2004\_DS\_20120502.mxd



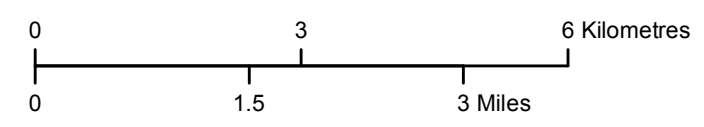
Projection: UTM Zone 15, NAD 83  
Data Source: NTS base 1:50 000

## Water Quality Sampling Sites 2001-2004

Downstream Area



Map illustrates the estimated extent of dewatered area when the spillway is not in operation. The true extent of this area is uncertain due to the limited bathymetric data.



Projection: UTM Zone 15, NAD 83  
 Data Source: NTS base 1:50 000  
 Stephens Lake Shoreline - Quickbird@Digitalglobe, 2006  
 Nelson River Shorelines modelled by Manitoba Hydro

## Typical Summer Week Average Flows - Surface Dissolved Oxygen

Post-Project Base Loaded Mode - Year 1 - Time of Greatest Effect