

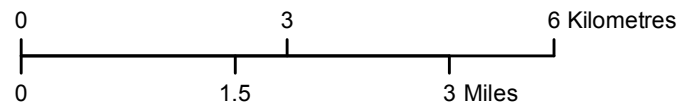
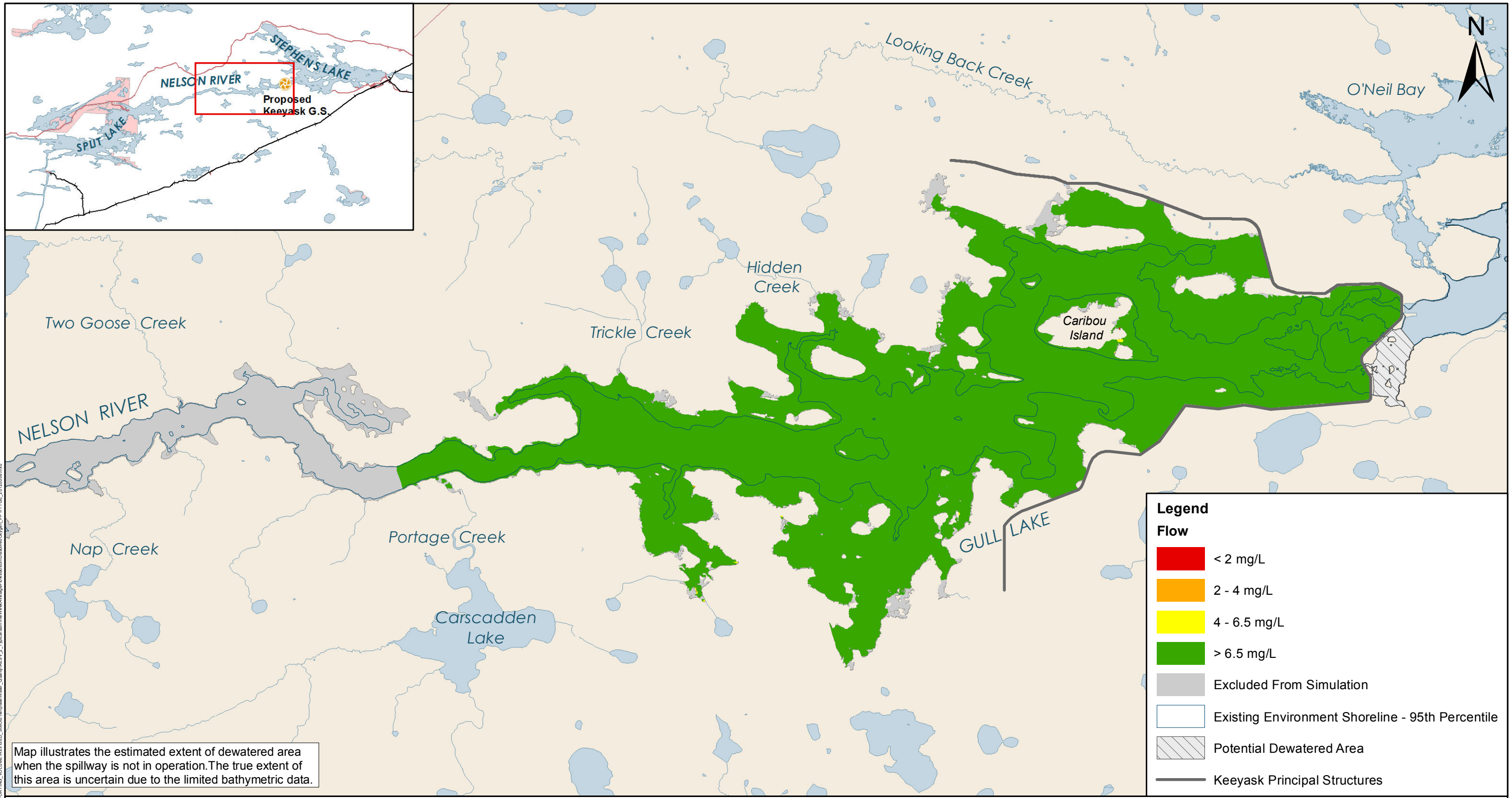


Keeyask Generation Project Environmental Impact Statement

Supporting Volume Aquatic Environment

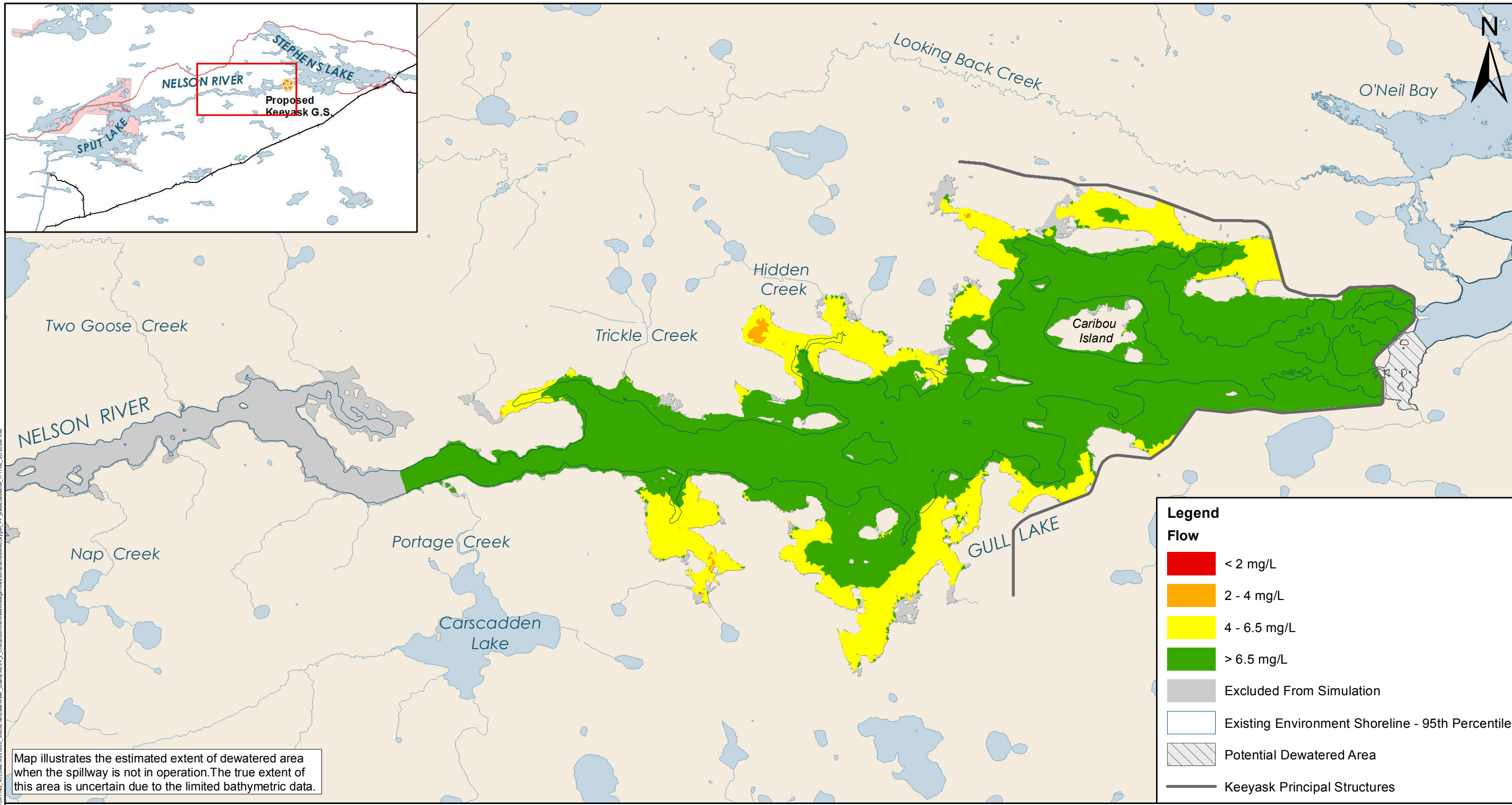


June 2012

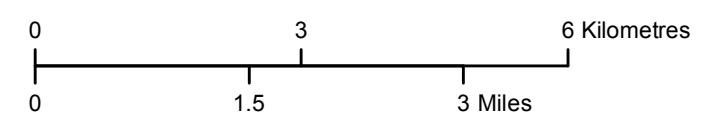


Projection: UTM Zone 15, NAD 83
 Data Source: NTS base 1:50 000
 Stephens Lake Shoreline - Quickbird@Digitalglobe, 2006
 Nelson River Shorelines modelled by Manitoba Hydro

**Typical Summer Week Average Flows -
 Bottom Dissolved Oxygen**
 Post-Project Base Loaded Mode - Year 1 - Time of Greatest Effect



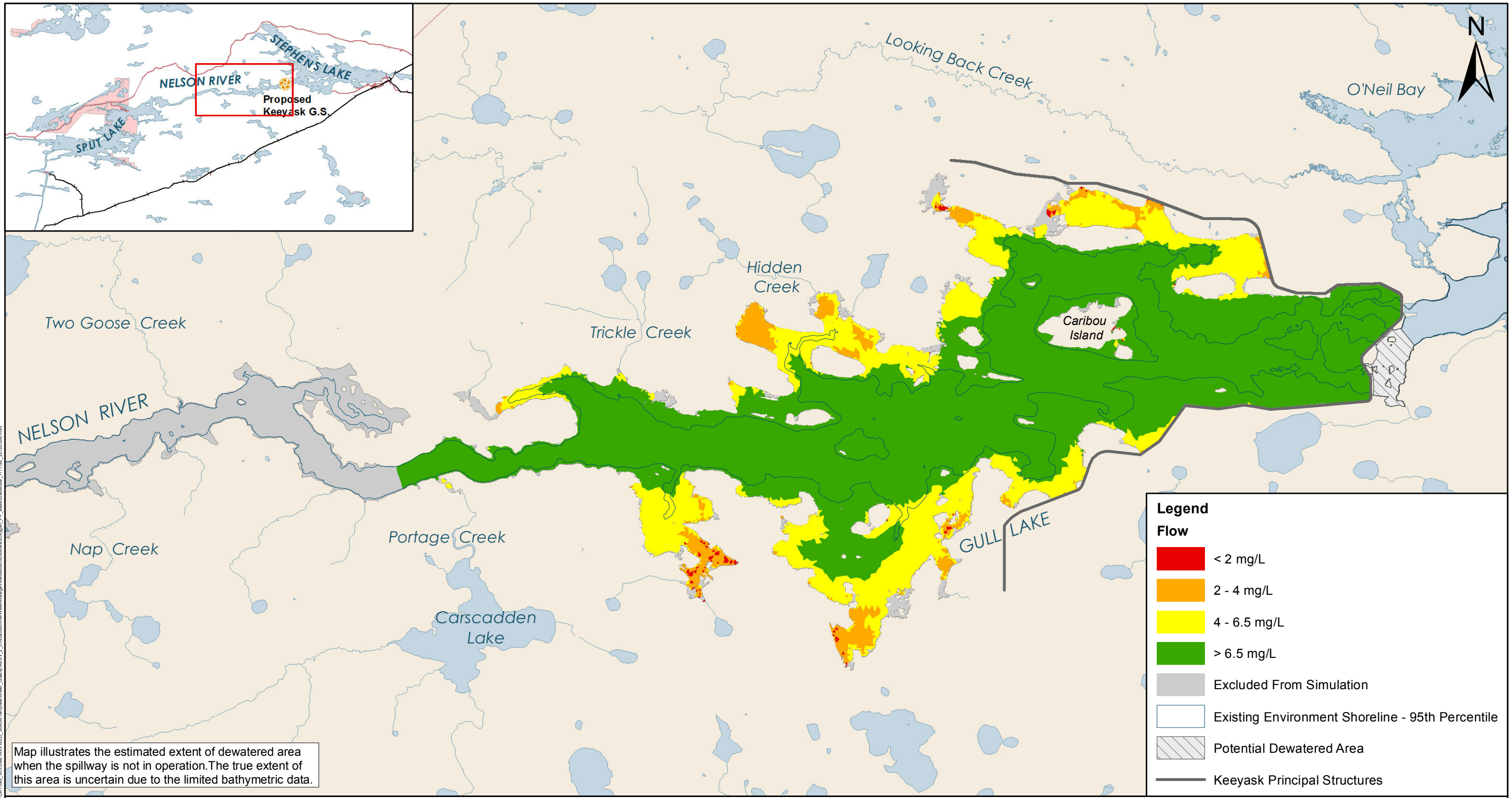
Map illustrates the estimated extent of dewatered area when the spillway is not in operation. The true extent of this area is uncertain due to the limited bathymetric data.



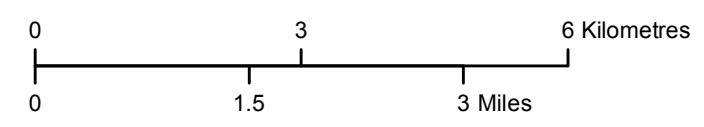
Projection: UTM Zone 15, NAD 83
 Data Source: NTS base 1:50 000
 Stephens Lake Shoreline - Quickbird@Digitalglobe, 2006
 Nelson River Shorelines modelled by Manitoba Hydro

Critical Summer Week Average Flows - Surface Dissolved Oxygen

Post-Project Base Loaded Mode - Year 1 - Time of Greatest Effect



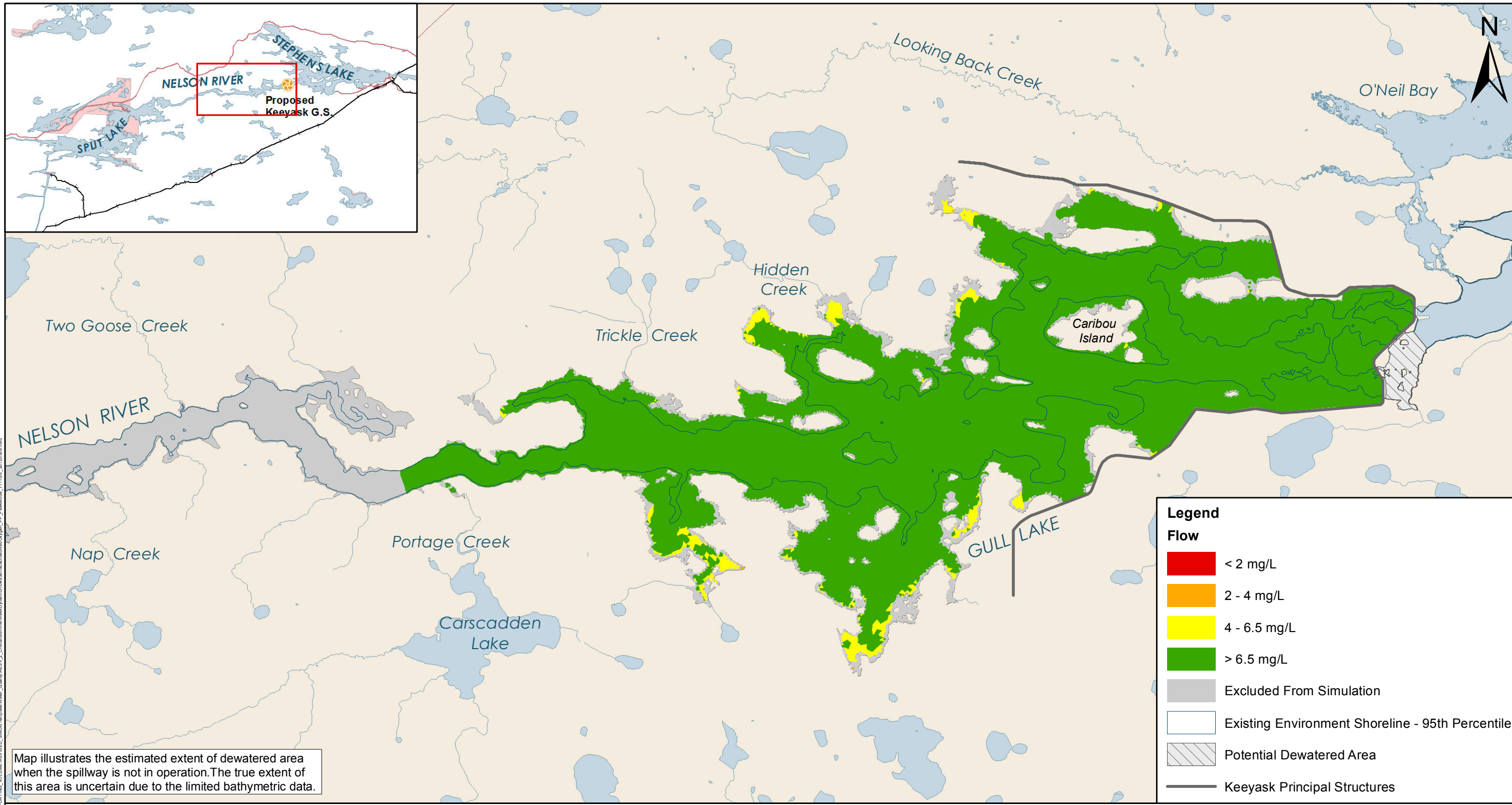
Map illustrates the estimated extent of dewatered area when the spillway is not in operation. The true extent of this area is uncertain due to the limited bathymetric data.



Projection: UTM Zone 15, NAD 83
 Data Source: NTS base 1:50 000
 Stephens Lake Shoreline - Quickbird@Digitalglobe, 2006
 Nelson River Shorelines modelled by Manitoba Hydro

Critical Summer Week Average Flows - Bottom Dissolved Oxygen

Post-Project Base Loaded Mode - Year 1 - Time of Greatest Effect

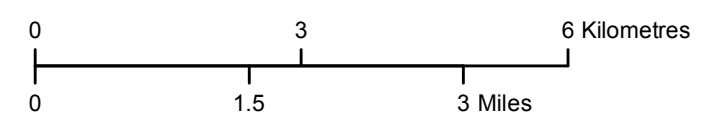


Map illustrates the estimated extent of dewatered area when the spillway is not in operation. The true extent of this area is uncertain due to the limited bathymetric data.

Legend

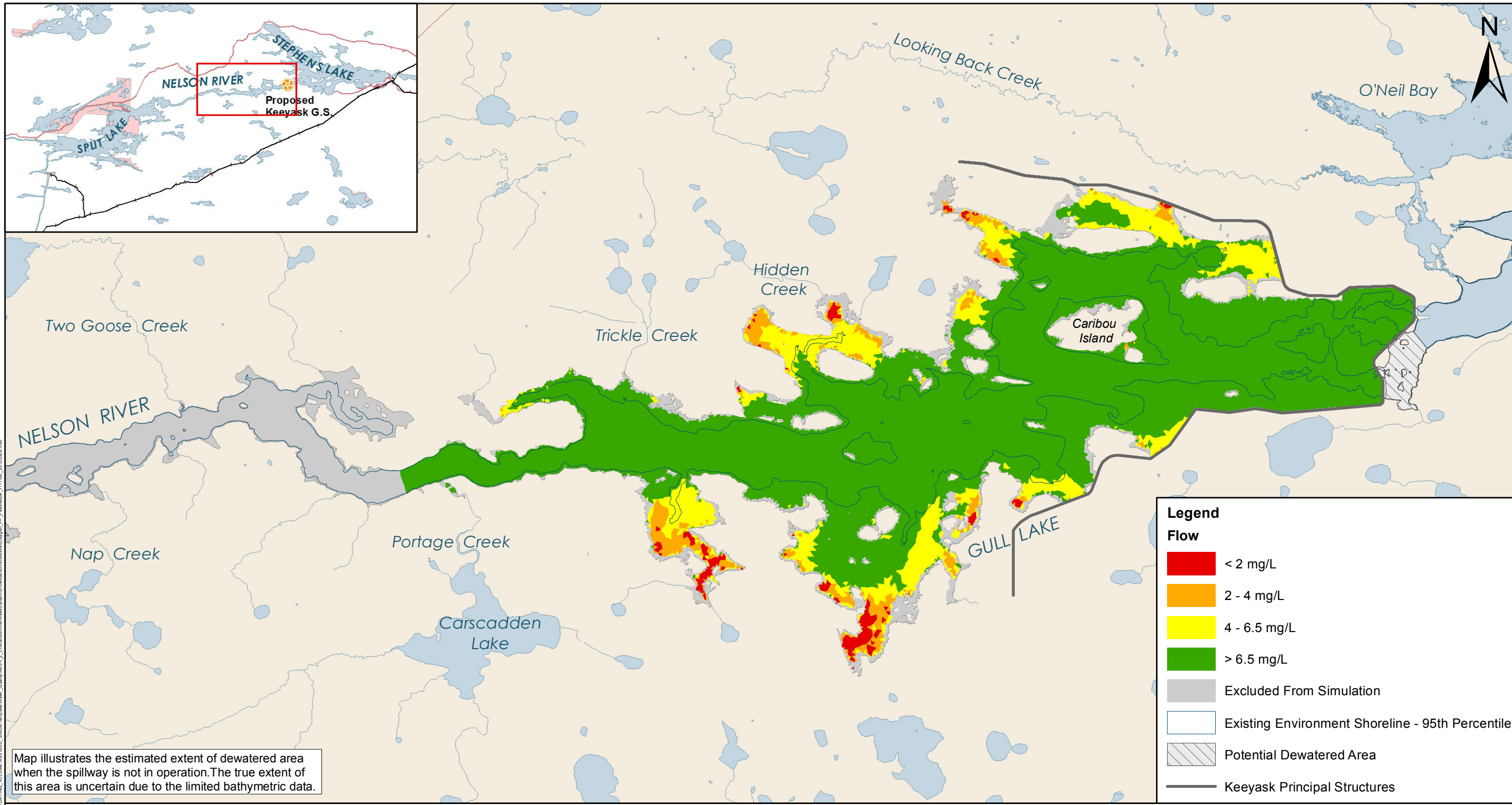
Flow

- < 2 mg/L
- 2 - 4 mg/L
- 4 - 6.5 mg/L
- > 6.5 mg/L
- Excluded From Simulation
- Existing Environment Shoreline - 95th Percentile
- Potential Dewatered Area
- Keyask Principal Structures

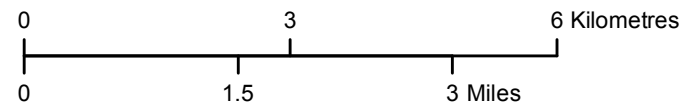


Projection: UTM Zone 15, NAD 83
 Data Source: NTS base 1:50 000
 Stephens Lake Shoreline - Quickbird@Digitalglobe, 2006
 Nelson River Shorelines modelled by Manitoba Hydro

**Critical Summer Week Dynamic Flows -
 Surface Dissolved Oxygen**
 Post-Project Peaking Mode - Year 1 - Time of Greatest Effect



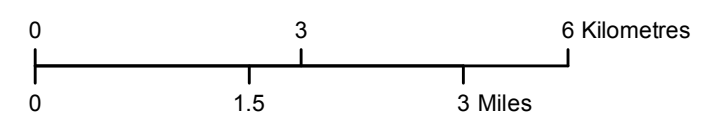
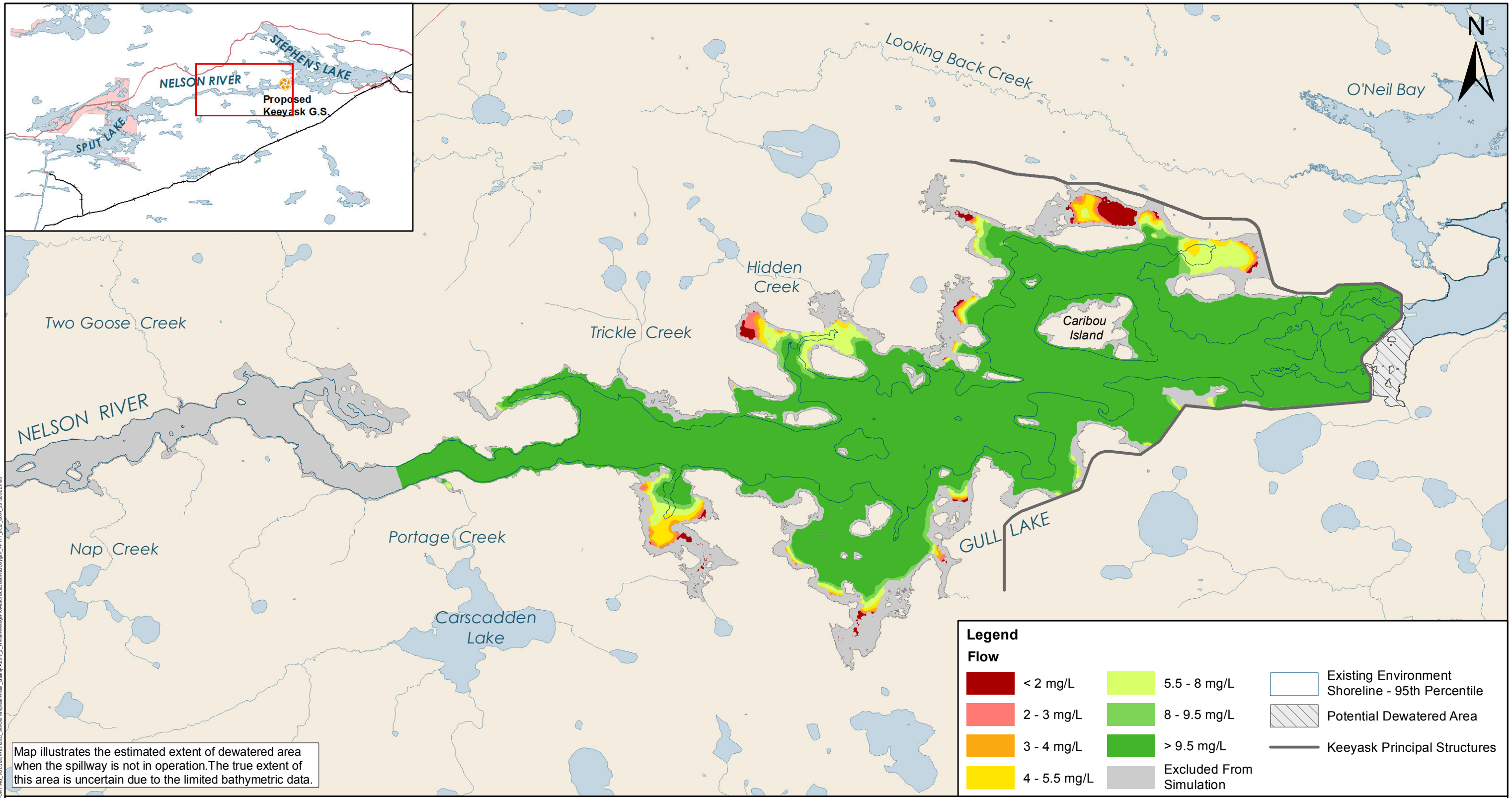
File Location: G:\EEB\Keeyask\Subarea_Maps\SUPPORTING_VOLUME\REVISED_SINOT\TerraWater_Quality\MESV_2_CriticalSummerWeekDynamicFlowsBottomDissolvedOxygen_PP_PrakMesa_Y1TTC_E_20120808.mxd



Projection: UTM Zone 15, NAD 83
 Data Source: NTS base 1:50 000
 Stephens Lake Shoreline - Quickbird@Digitalglobe, 2006
 Nelson River Shorelines modelled by Manitoba Hydro

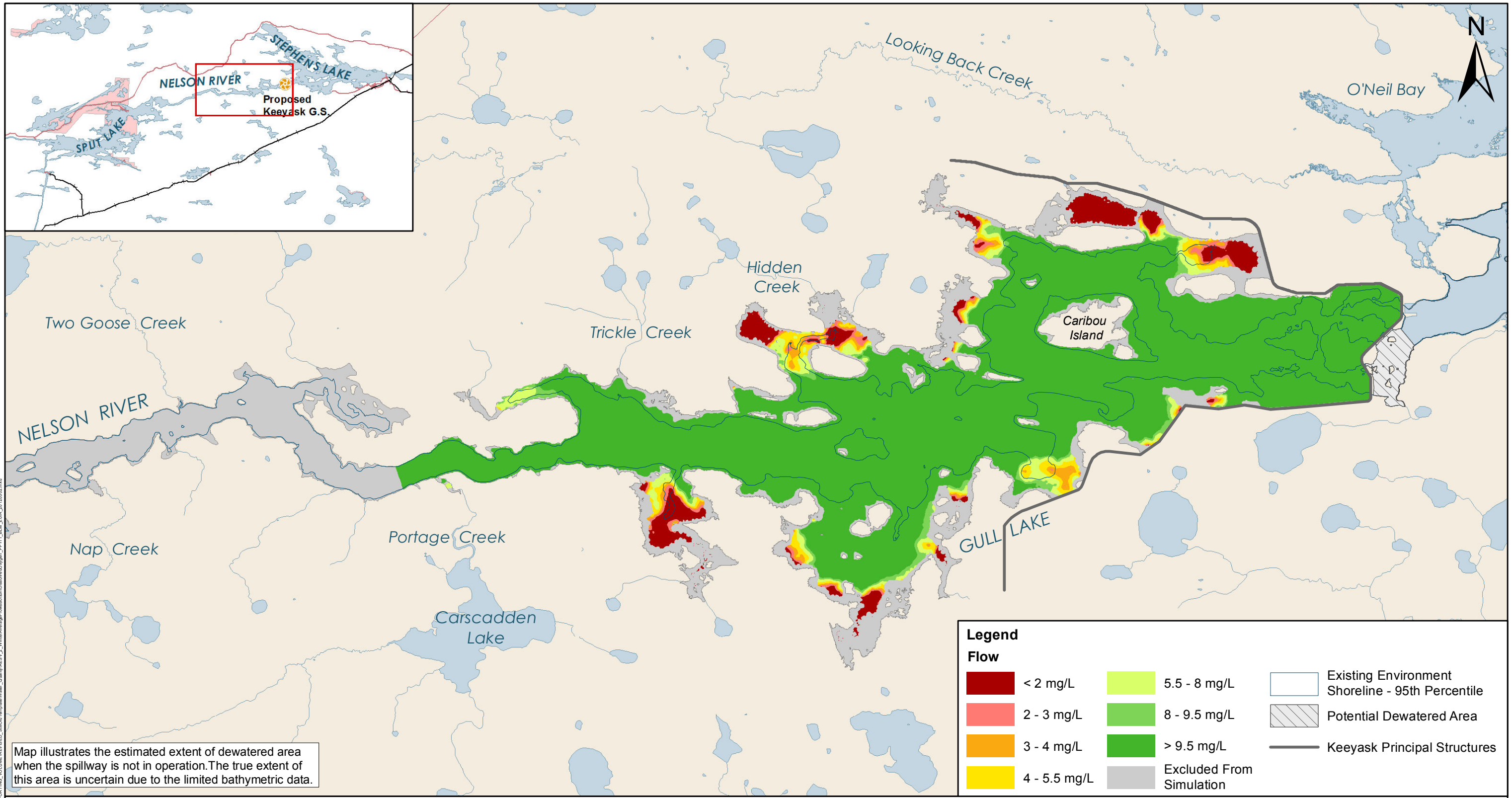
Critical Summer Week Dynamic Flows - Bottom Dissolved Oxygen

Post-Project Peaking Mode - Year 1 - Time of Greatest Effect

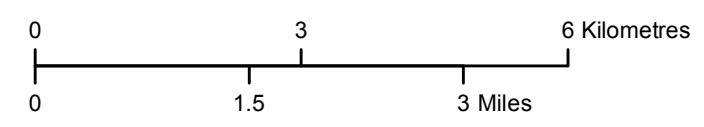


Projection: UTM Zone 15, NAD 83
 Data Source: NTS base 1:50 000
 Stephens Lake Shoreline - Quickbird@Digitalglobe, 2006
 Nelson River Shorelines modelled by Manitoba Hydro

Winter Average Flows - Surface Dissolved Oxygen
 Post-Project Base Loaded Mode - Year 1 - End of Run



Map illustrates the estimated extent of dewatered area when the spillway is not in operation. The true extent of this area is uncertain due to the limited bathymetric data.



Projection: UTM Zone 15, NAD 83
 Data Source: NTS base 1:50 000
 Stephens Lake Shoreline - Quickbird@Digitalglobe, 2006
 Nelson River Shorelines modelled by Manitoba Hydro

Winter Average Flows - Bottom Dissolved Oxygen

Post-Project Base Loaded Mode - Year 1 - End of Run