



# Keeyask Generation Project Environmental Impact Statement

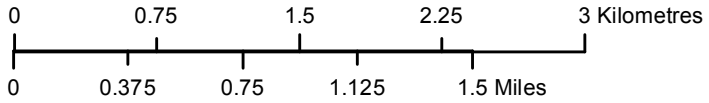
## Supporting Volume Aquatic Environment



June 2012



R:\Location\GIS\Keeyask\Sub-areas\MapSupporting\_Volume\REVISED\_SupportingMapAreas\_Hydro\REV\_3\_WaterQualitySitesAndLocalMixedandRegionalWaterMasses\_STL\_20100601.mxd



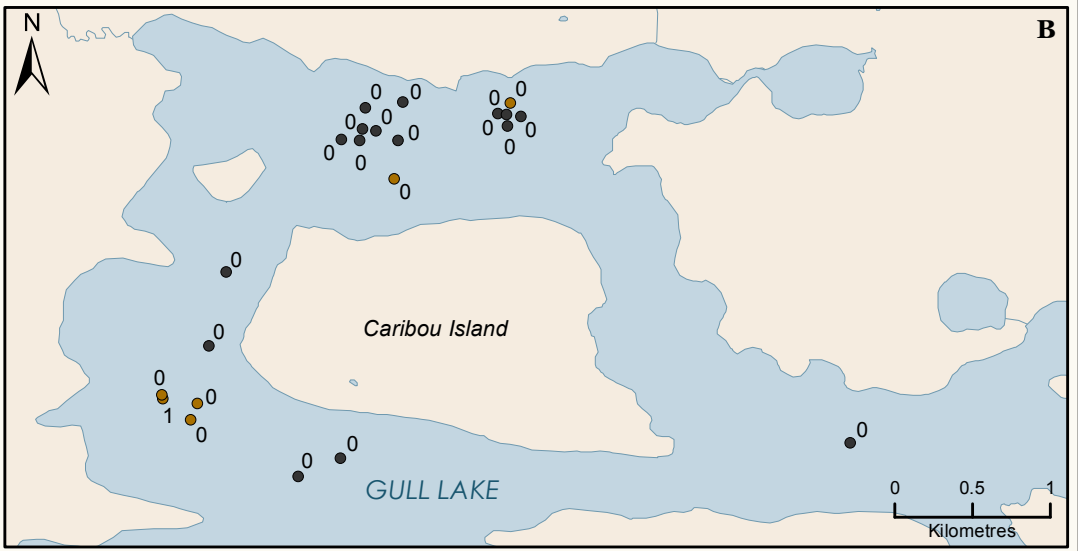
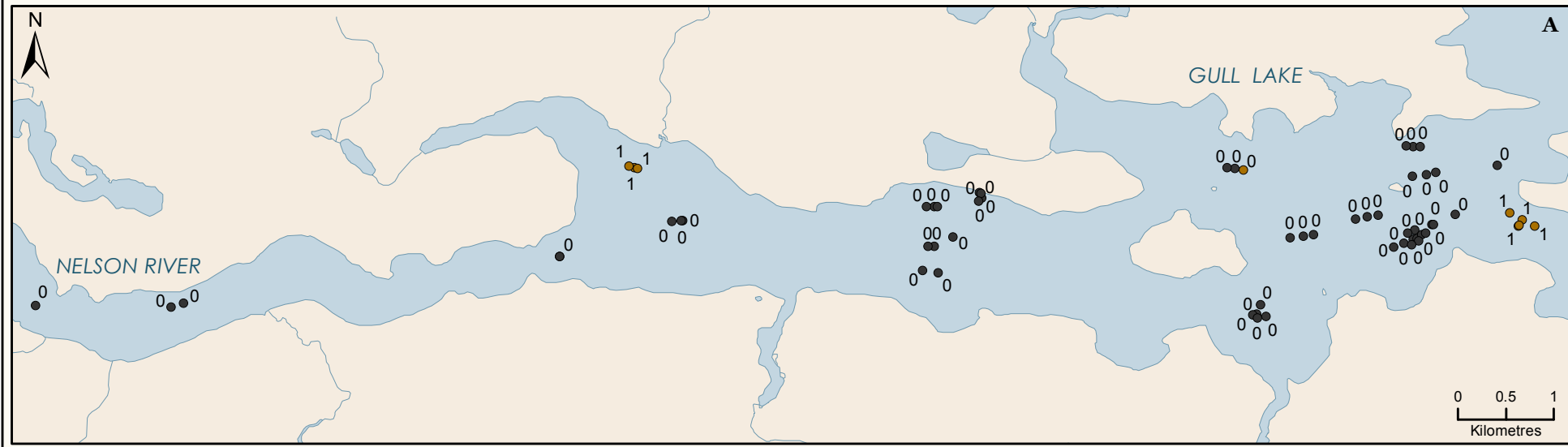
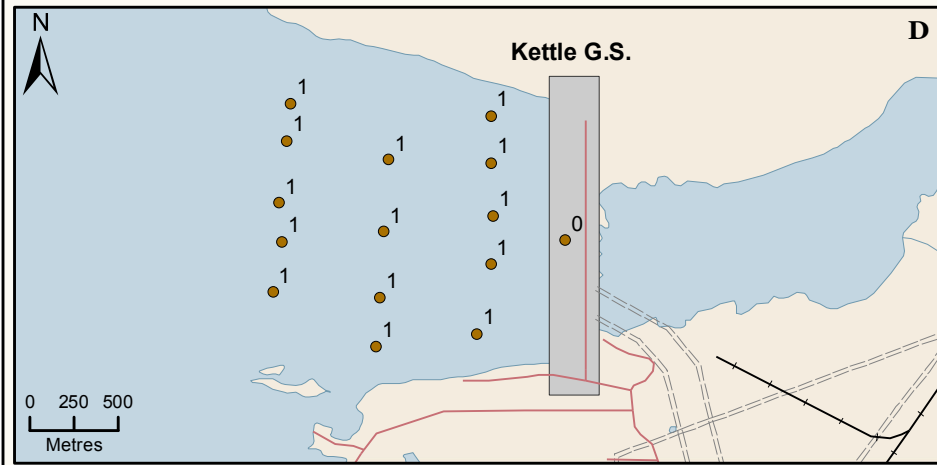
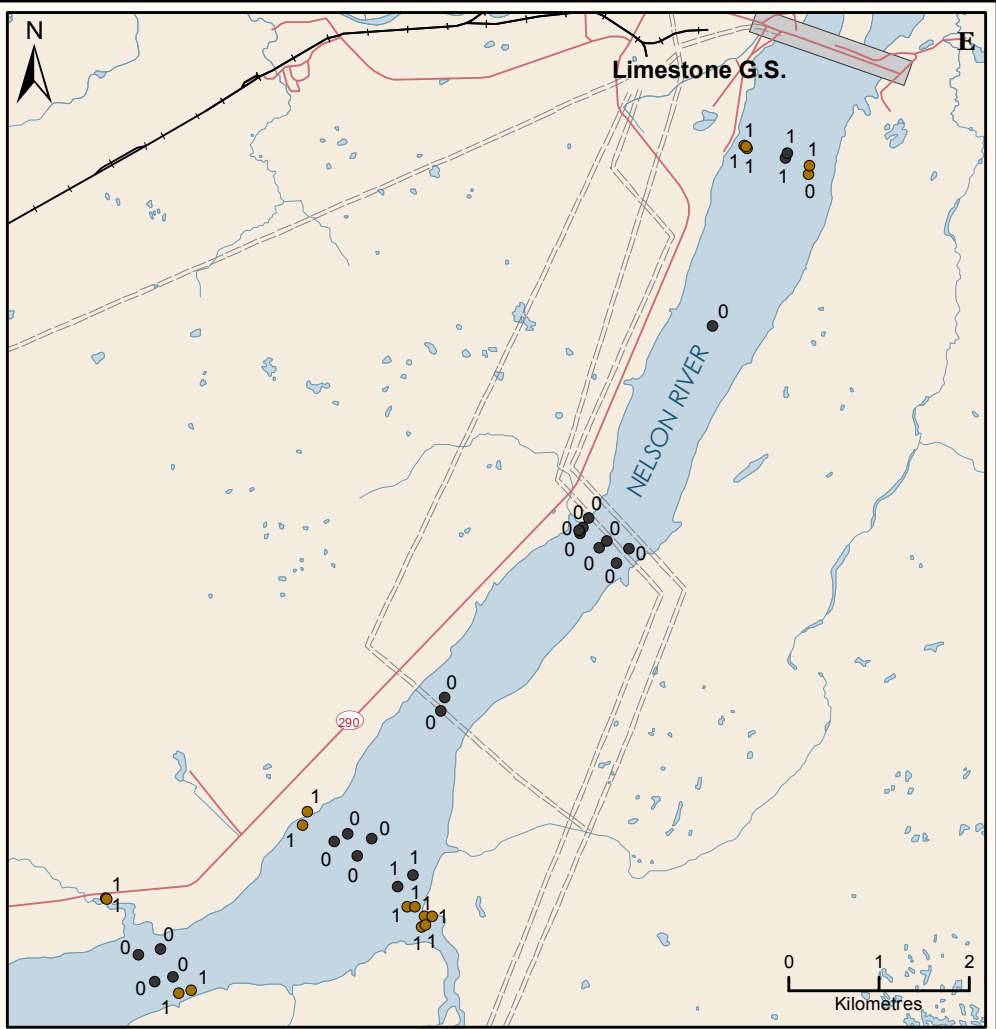
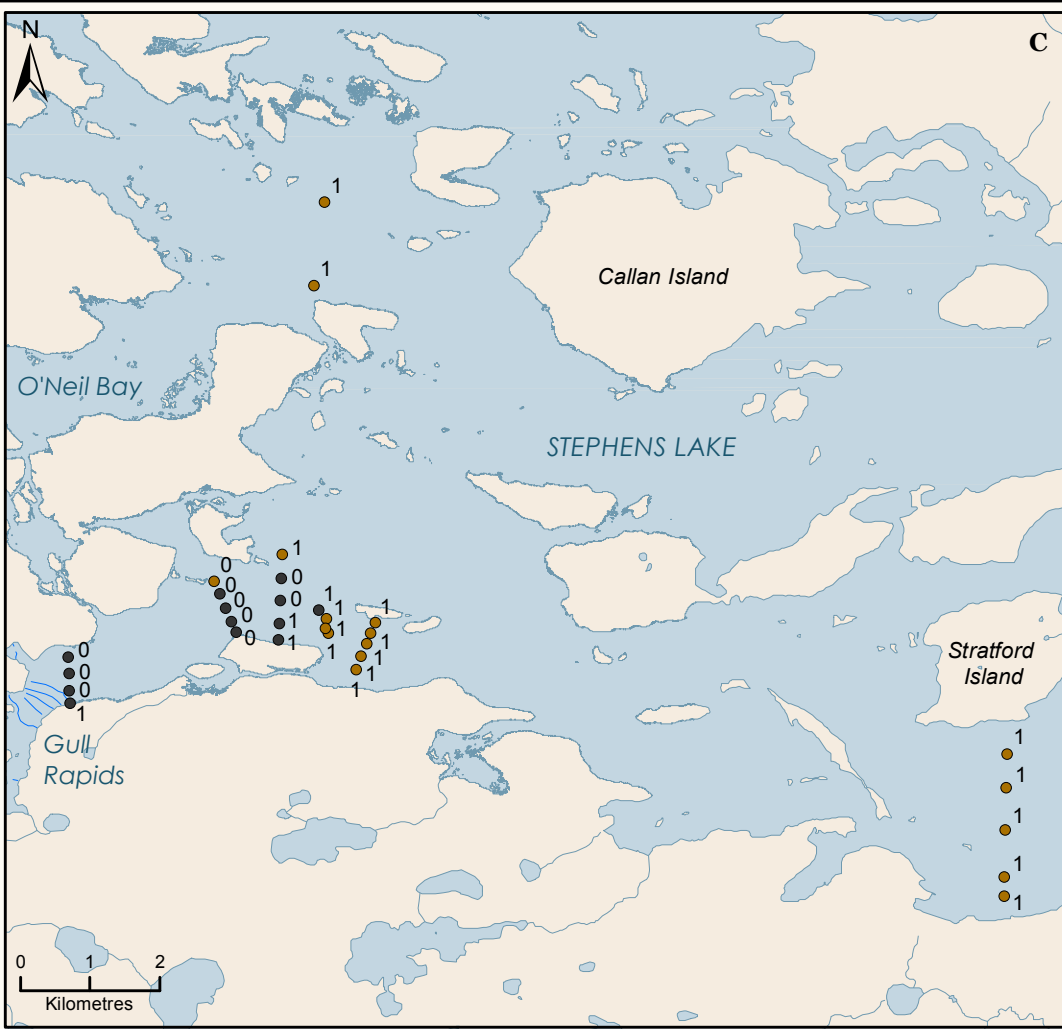
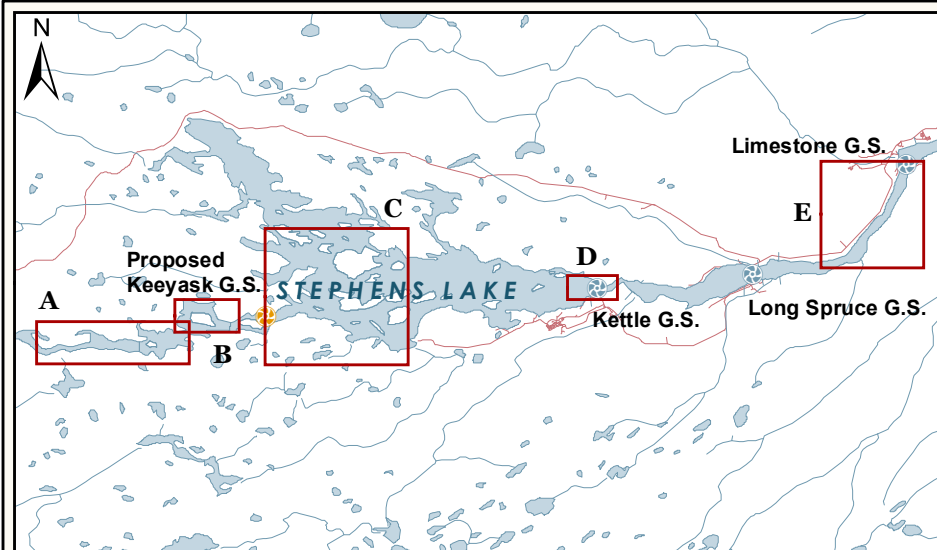
Projection: UTM Zone 15, NAD 83  
 Data Source: © DigitalGlobe, Quickbird Imagery  
 true color composite, September 2, 2006

### Water Quality Sites and LOCAL, MIXED and REGIONAL Water Masses Stephens Lake

**Legend**

**Water Quality Sites**

- 2005
- 2006
- 2005 and 2006



File Location: G:\EEB\Keeyask\Shoreline\_Maps\MapSupporting\_Volume\REVISED\_SupportingMap\MapSupporting\_Volume\MapSupporting\_Volume\_20120904.mxd

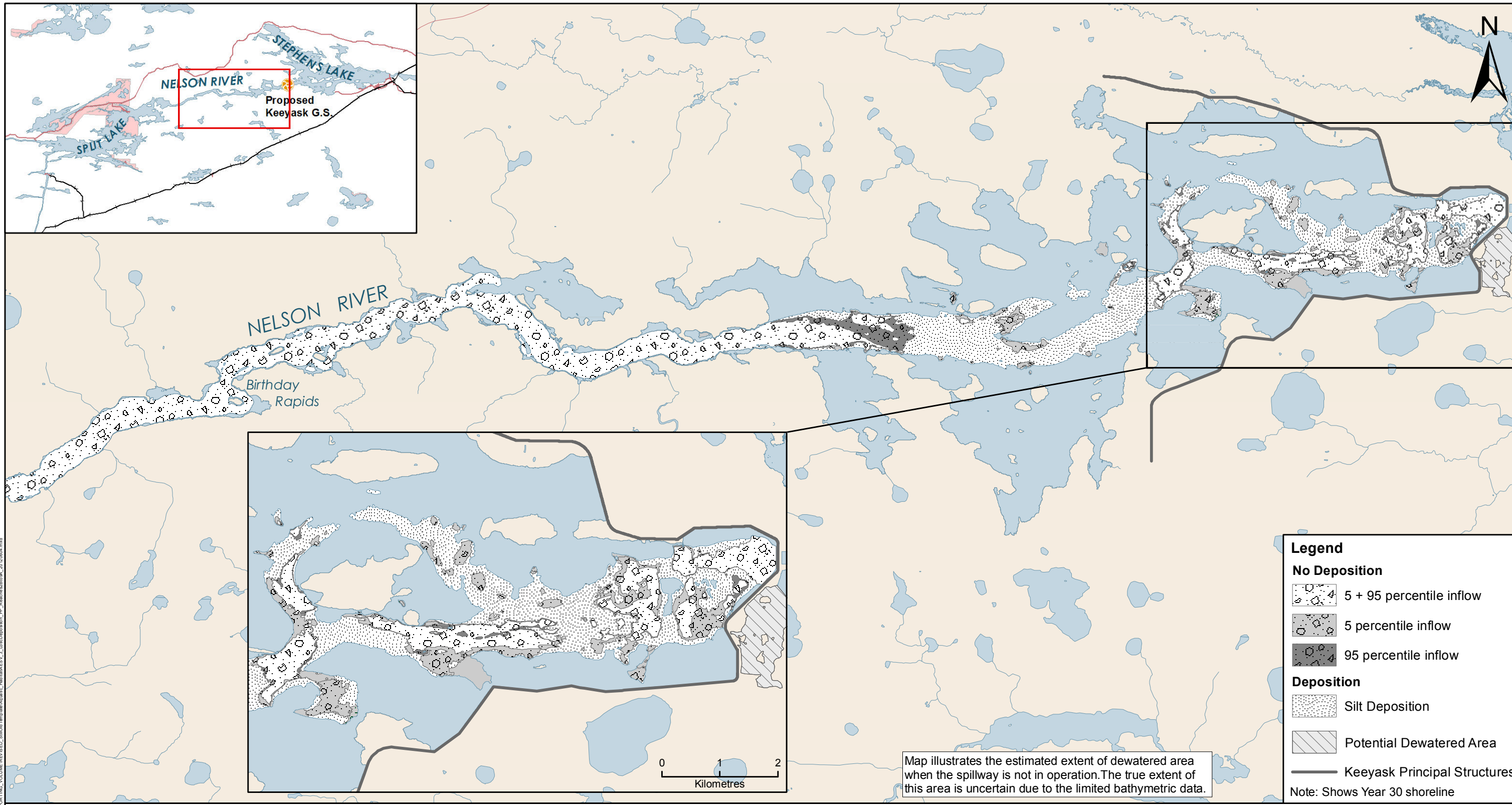


Projection: UTM Zone 15, NAD 83  
 Data Source: NTS base 1:50 000  
 Stephens Lake Shoreline - Quickbird@Digitalglobe, 2006  
 Nelson River Shoreline modelled by Manitoba Hydro

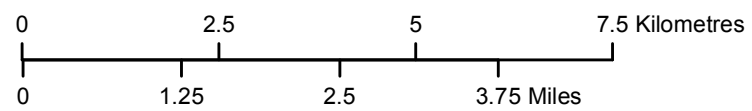
| Legend            |                   |
|-------------------|-------------------|
| Observed          | Predicted         |
| ● = No deposition | 0 = No deposition |
| ● = Deposition    | 1 = Deposition    |

Note: Cross-validation of observed and predicted classes derived from logistic regression under 95<sup>th</sup> percentile inflow conditions.

## Lotic Depositional Model



File Location: G:\ES\Keyyask\Sub-ACR\Supporting\_Volume\REVISED\_Supporting\_Volume\Map\_3B-3\_LoticDeposition\_PP\_Reaches2Bto9A.mxd



Projection: UTM Zone 15, NAD 83  
 Data Source: NTS base 1:50 000  
 Stephens Lake Shoreline - Quickbird@Digitalglobe, 2006  
 Nelson River Shoreline modelled by Manitoba Hydro.  
 Extents of dewatered area are estimated based on the existing environment 95<sup>th</sup> percentile flow.

## Lotic Deposition

### Post-Project - Reaches 2B to 9A