

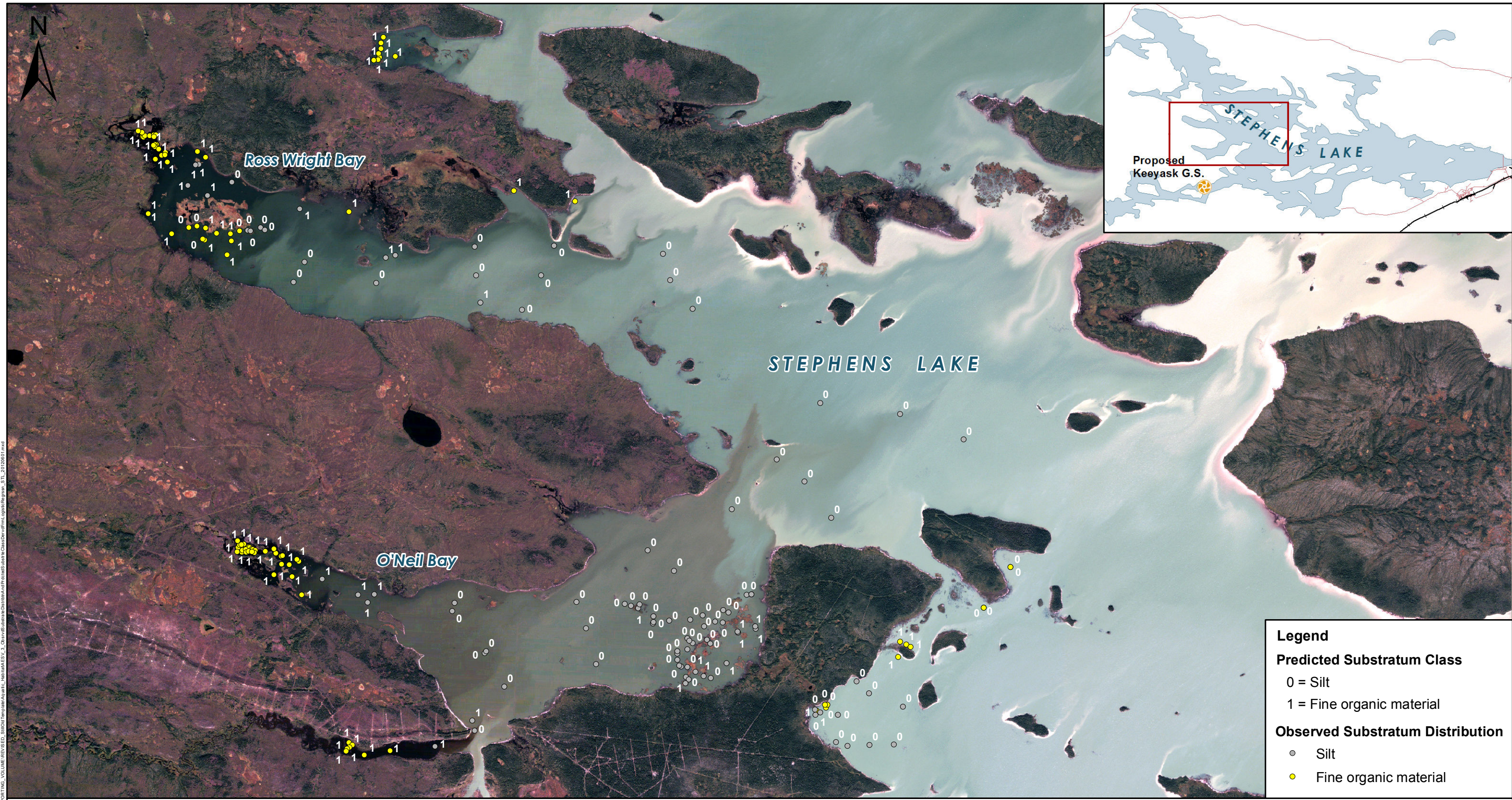


# Keeyask Generation Project Environmental Impact Statement

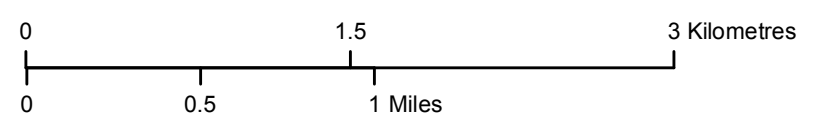
## Supporting Volume Aquatic Environment



June 2012



File Location: G:\EEB\Keeyask\Subst. Map\MapSupporting\_Volume\REVISED\_SupportingVolume\Subst. Distribution\ObservedSubst. Distribution\MapSupporting\_Vol\_20120601.mxd

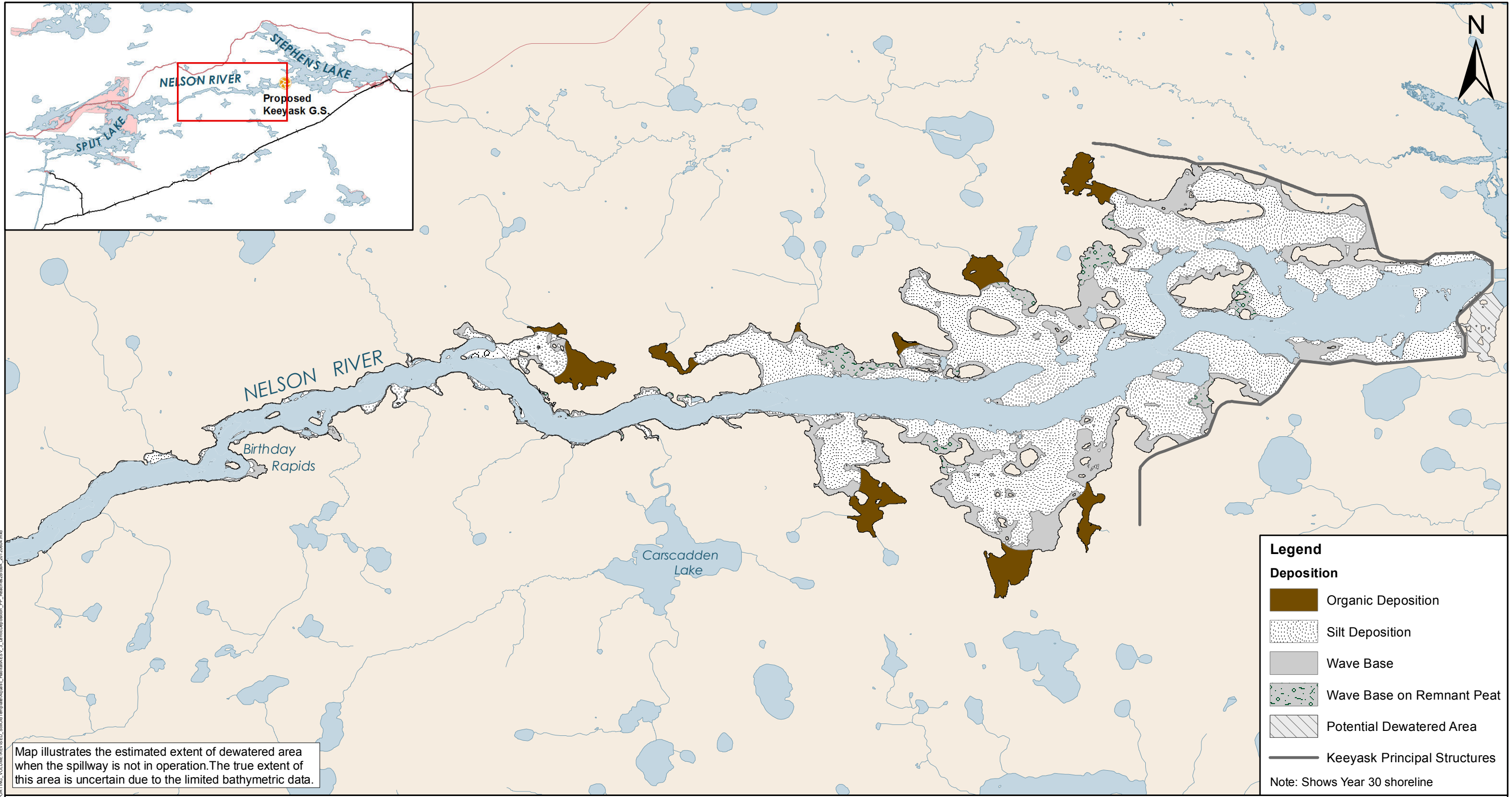


Projection: UTM Zone 15, NAD 83  
 Data Source: © Digitalglobe Quickbird  
 image-Sept 2, 2006

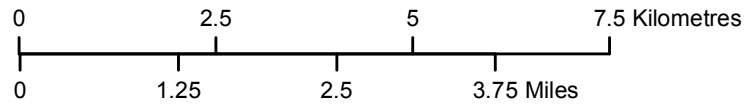
## Observed Substratum Distribution and Predicted Substratum Class Derived from Logistic Regression

### Stephens Lake

Legend	
<b>Predicted Substratum Class</b>	
0	= Silt
1	= Fine organic material
<b>Observed Substratum Distribution</b>	
○	Silt
●	Fine organic material



Map illustrates the estimated extent of dewatered area when the spillway is not in operation. The true extent of this area is uncertain due to the limited bathymetric data.



Projection: UTM Zone 15, NAD 83  
 Data Source: NTS base 1:50 000  
 Stephens Lake Shoreline - Quickbird@Digitalglobe, 2006  
 Nelson River Shoreline modelled by Manitoba Hydro.  
 Extents of dewatered area are estimated based on the existing environment 95<sup>th</sup> percentile flow.

## Lentic Deposition

Post-Project - Reaches 2B to 9A