

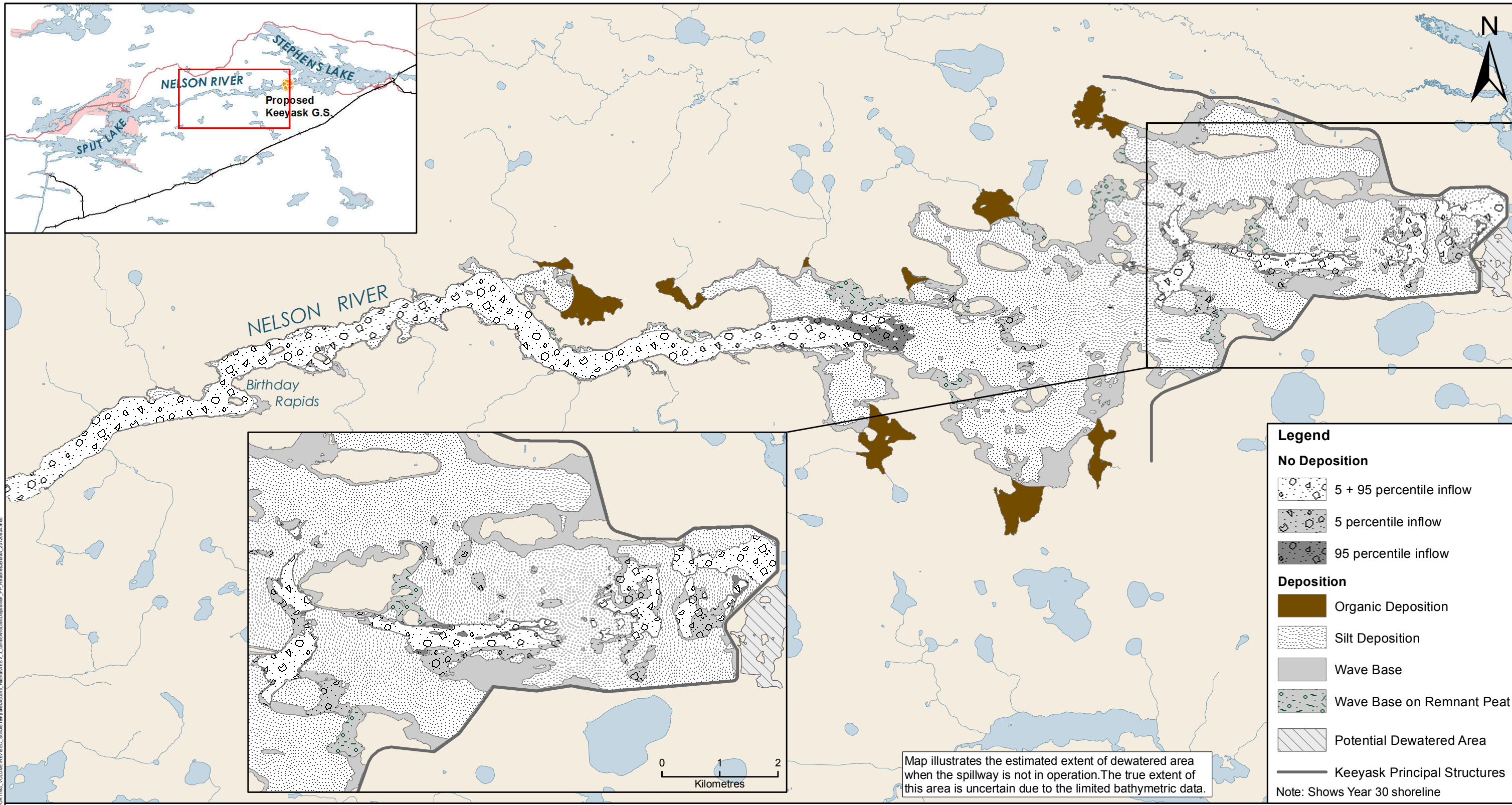


Keeyask Generation Project Environmental Impact Statement

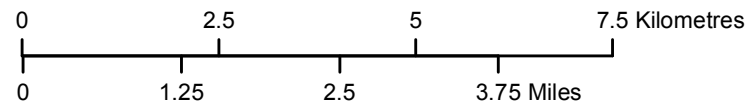
Supporting Volume Aquatic Environment



June 2012



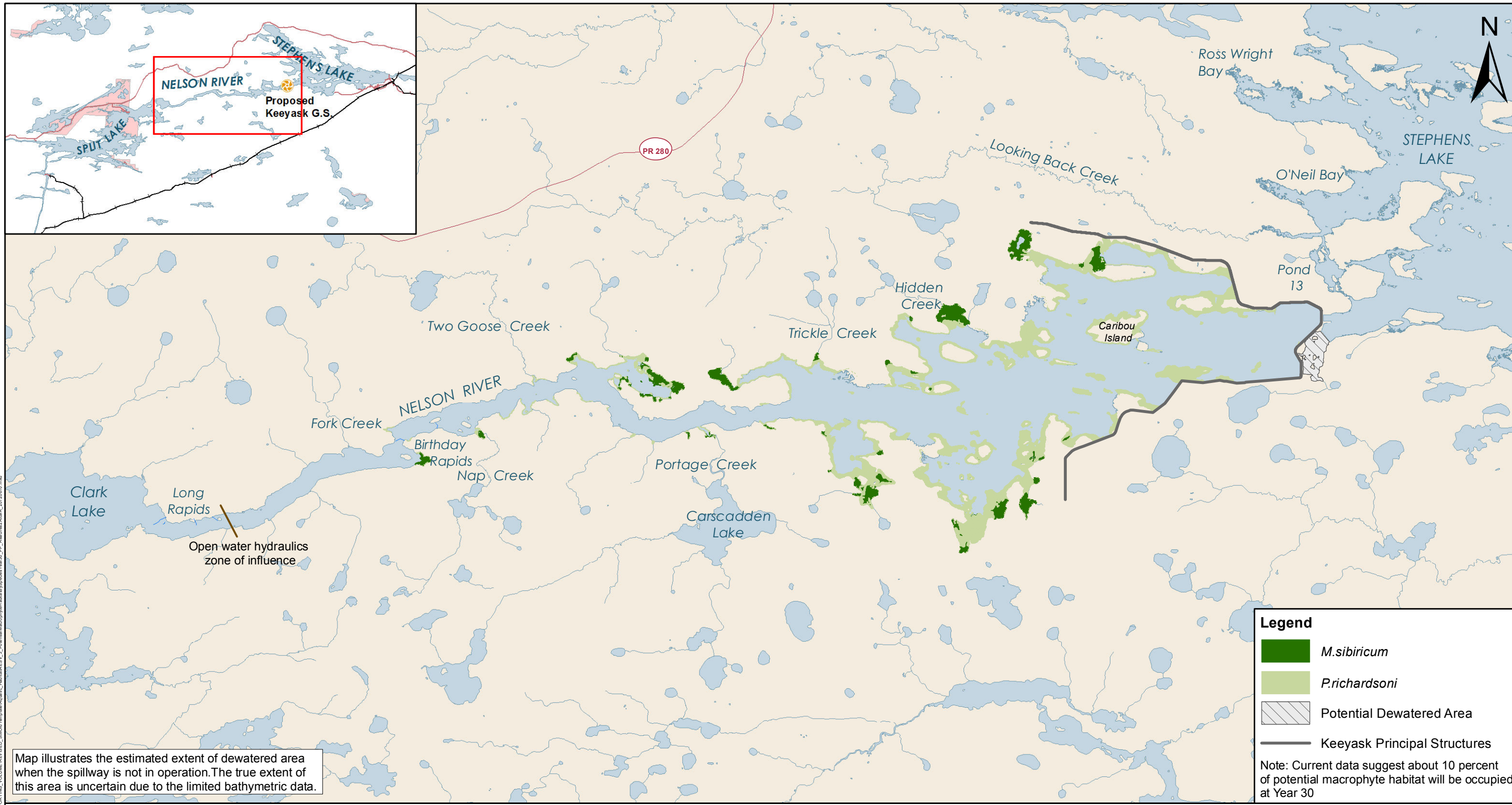
File Location: G:\ES\Keeyask\Shoreline - MCD\3\SUPPORTING - VOLUME\REVISED - SHOOT\Temp\Map\Map - 3 - Lentic and Lotic Deposition - PP - Reach 2B to 9A - 21120604.mxd



Projection: UTM Zone 15, NAD 83
 Data Source: NTS base 1:50 000
 Stephens Lake Shoreline - Quickbird@Digitalglobe, 2006
 Nelson River Shoreline modelled by Manitoba Hydro.
 Extents of dewatered area are estimated based on the existing environment 95th percentile flow.

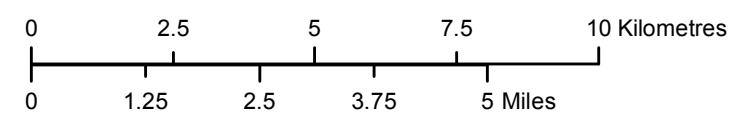
Lentic and Lotic Deposition

Post-Project - Reaches 2B to 9A



File Location: C:\EBS\Keyask\Subarea_MCO\Supporting_Volume\REVISED_Supporting\Map\Map3B-7_PotentialMacrophyteHabitat\3B-7_PotentialMacrophyteHabitat_2020060.mxd

Map illustrates the estimated extent of dewatered area when the spillway is not in operation. The true extent of this area is uncertain due to the limited bathymetric data.



Projection: UTM Zone 15, NAD 83
 Data Source: NTS base 1:50 000
 Stephens Lake Shoreline - Quickbird@Digitalglobe, 2006
 Nelson River Shoreline modelled by Manitoba Hydro.
 Extents of dewatered area are estimated based on the existing environment 95th percentile flow.

Potential Macrophyte Habitat by Species at Year 30

Post-Project - Reaches 2A to 9A