



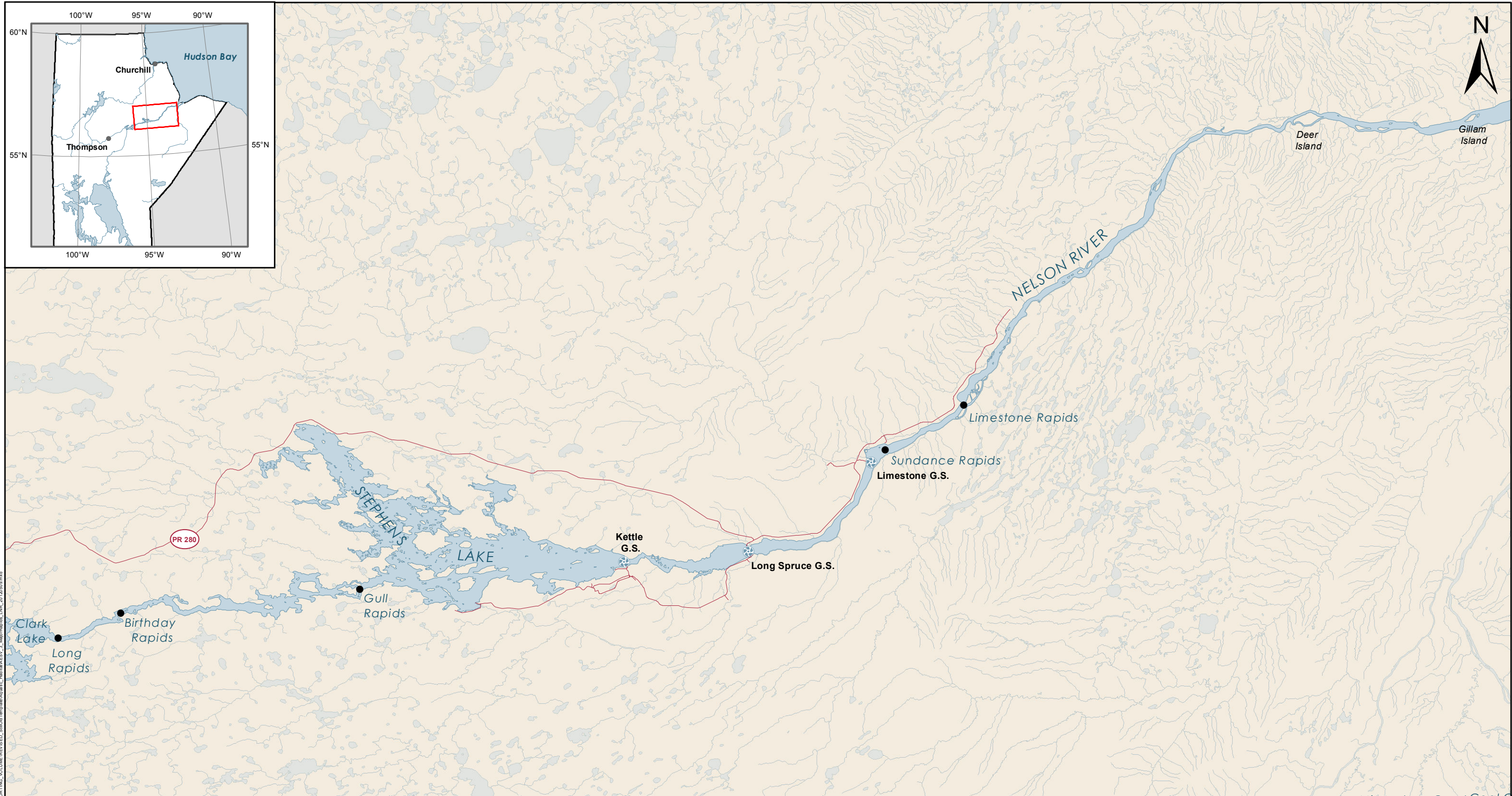
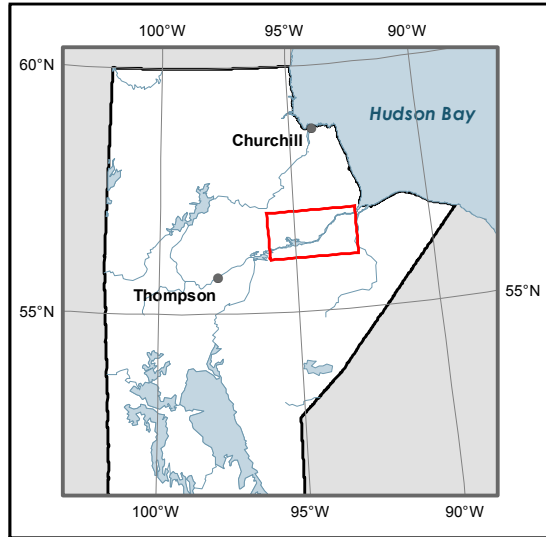
# Keeyask Generation Project Environmental Impact Statement

## Supporting Volume Aquatic Environment

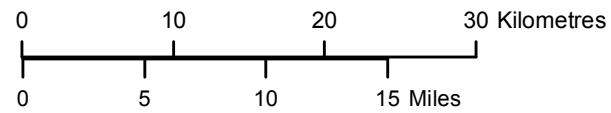


June 2012





File Location: G:\ES\Keeeyask\Job\_003\SUPPORTING\_VOLUME\REVISED\_SUPPORT\Map\Map\_3\_MajorRapids\_LNR\_20120509.mxd

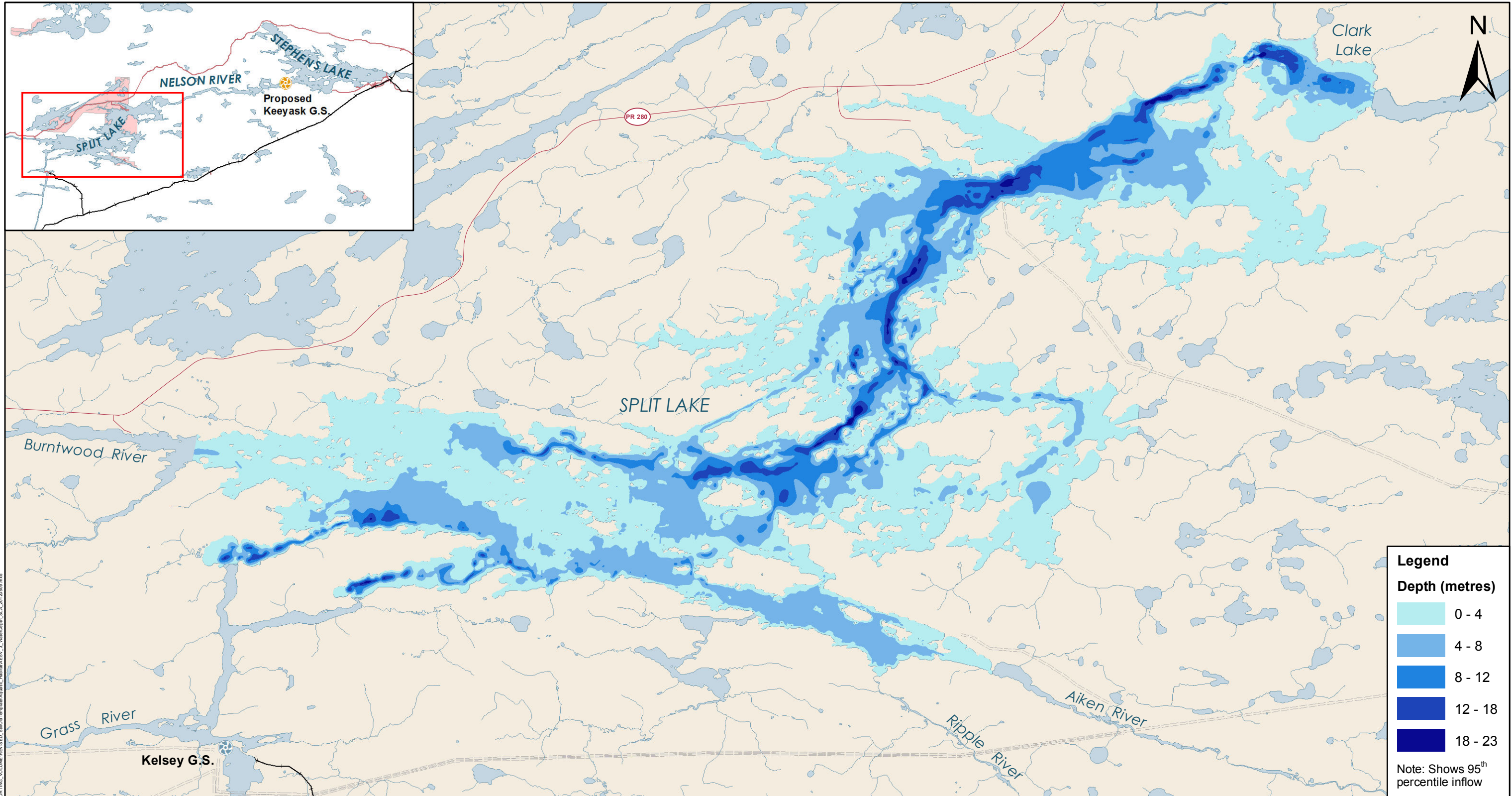


Projection: UTM Zone 15, NAD 83  
Data Source: NTS base 1:250 000

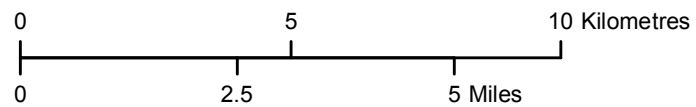
## Major Rapids

### Lower Nelson River





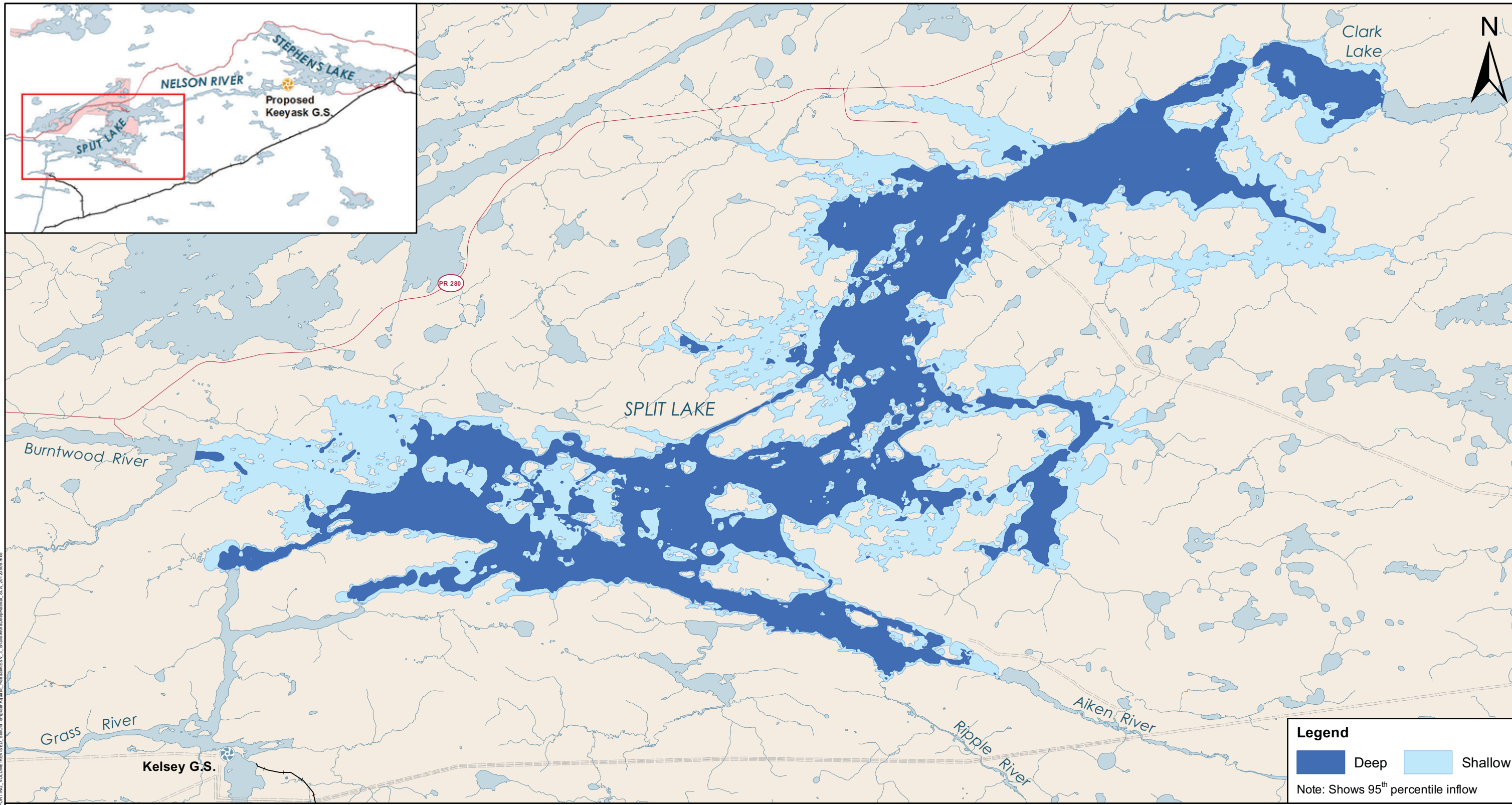
File Location: G:\ES\Keyyask\Sub\Sub\MapSupporting\_Volume\REVISED\_SupportingMap\MapArea\ESV\_3\_WaterDepth\_SLA\_2012090.mxd



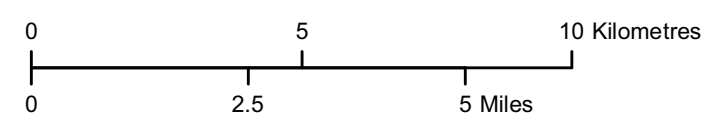
Projection: UTM Zone 15, NAD 83  
Data Source: NTS base 1:50 000

## Water Depth Split Lake Area





File Location: G:\EEB\Keeyask\Substn\_Maps\SUPPORTING\_VOLUME\REVISED\_Support\Temp\MapArea\_C\_Habitat\_EV\_3\_SplitLakeDepthHabit\_SLA\_20120909.mxd



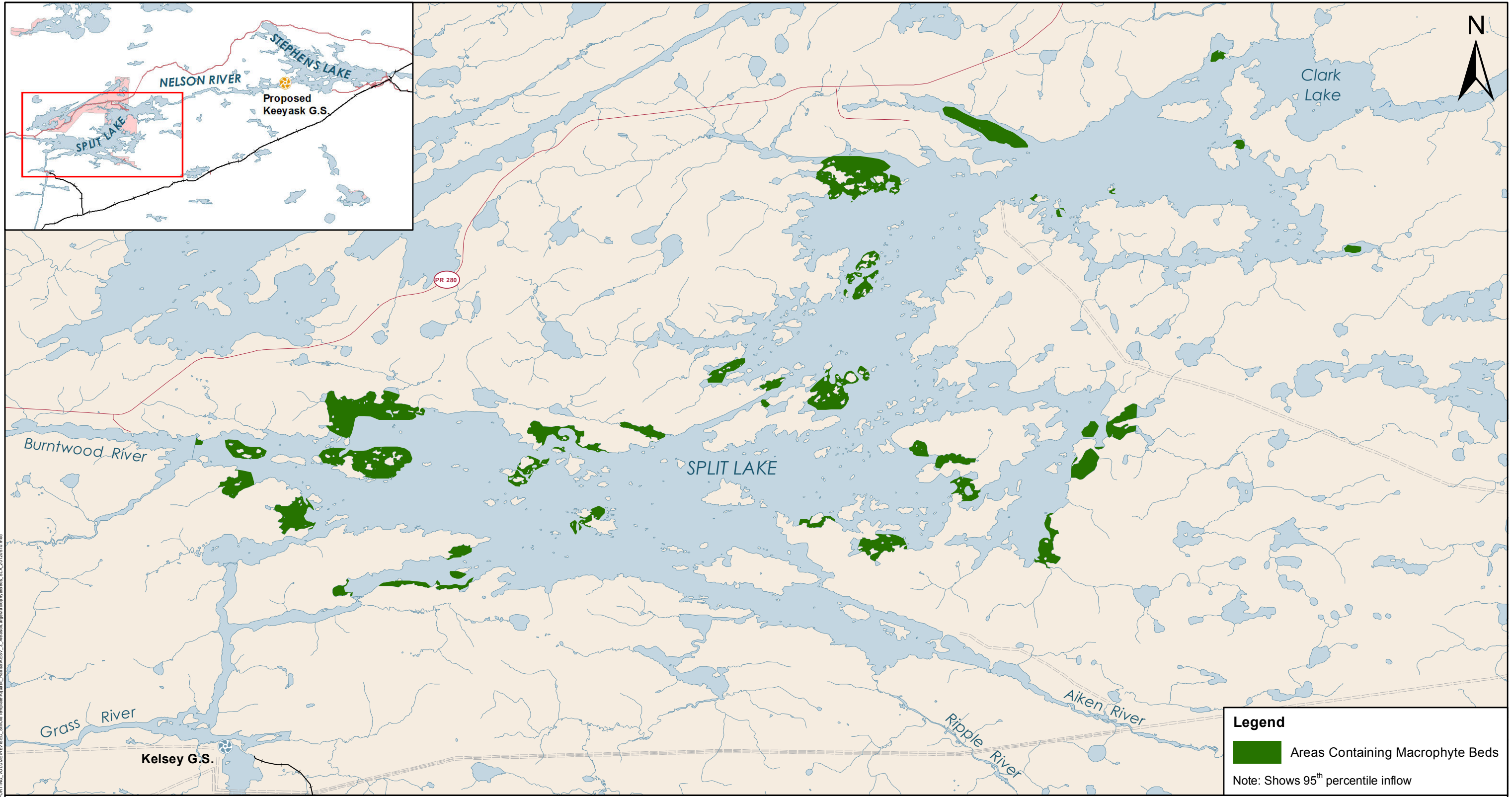
Projection: UTM Zone 15, NAD 83  
Data Source: NTS base 1:50 000

### Shallow and Deep Habitat Split Lake Area

**Legend**

<span style="display: inline-block; width: 15px; height: 10px; background-color: #004a99; border: 1px solid black;"></span> Deep	<span style="display: inline-block; width: 15px; height: 10px; background-color: #add8e6; border: 1px solid black;"></span> Shallow
--	---

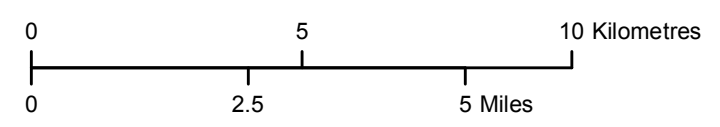
Note: Shows 95<sup>th</sup> percentile inflow



**Legend**

Areas Containing Macrophyte Beds

Note: Shows 95<sup>th</sup> percentile inflow

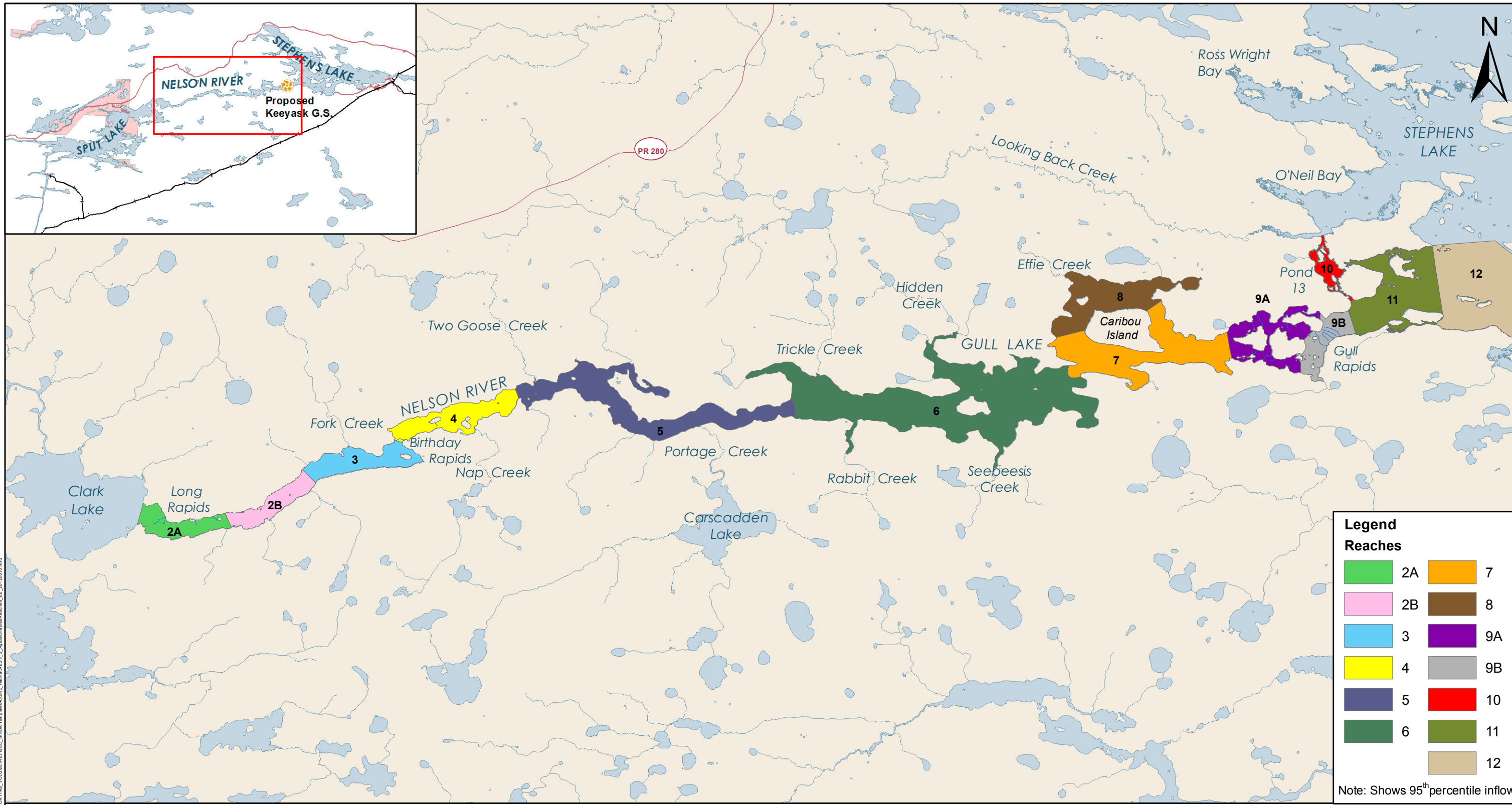


Projection: UTM Zone 15, NAD 83  
Data Source: NTS base 1:50 000

## Areas of Large Macrophyte Beds Split Lake Area

File Location: G:\ES\Keeyask\Sub\Sub\_Areas\Map\_Supporting\_Volume\REVISED\_SupportingMap\Map3-4\_AreasContainingMacrophyteBeds\_SLA\_20120510.mxd



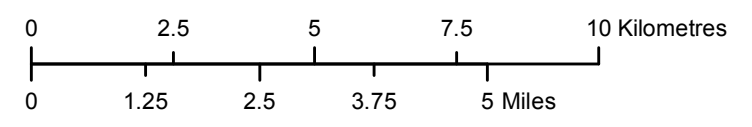


**Legend**  
**Reaches**

2A	7
2B	8
3	9A
4	9B
5	10
6	11
	12

Note: Shows 95<sup>th</sup> percentile inflow

RM Location: C:\ES\Keeyask\Subarea\_Maps\SUPPORTING\_VOLUMES\REVISED\_Support\Map\Aquatic\_Habitat\Reaches\_EE\_20120510.mxd



Projection: UTM Zone 15, NAD 83  
 Data Source: NTS base 1:50 000  
 Stephens Lake Shoreline - Quickbird@Digitalglobe, 2006  
 Nelson River Shoreline modelled by Manitoba Hydro

**Aquatic Habitat Reaches**  
 Existing Environment