

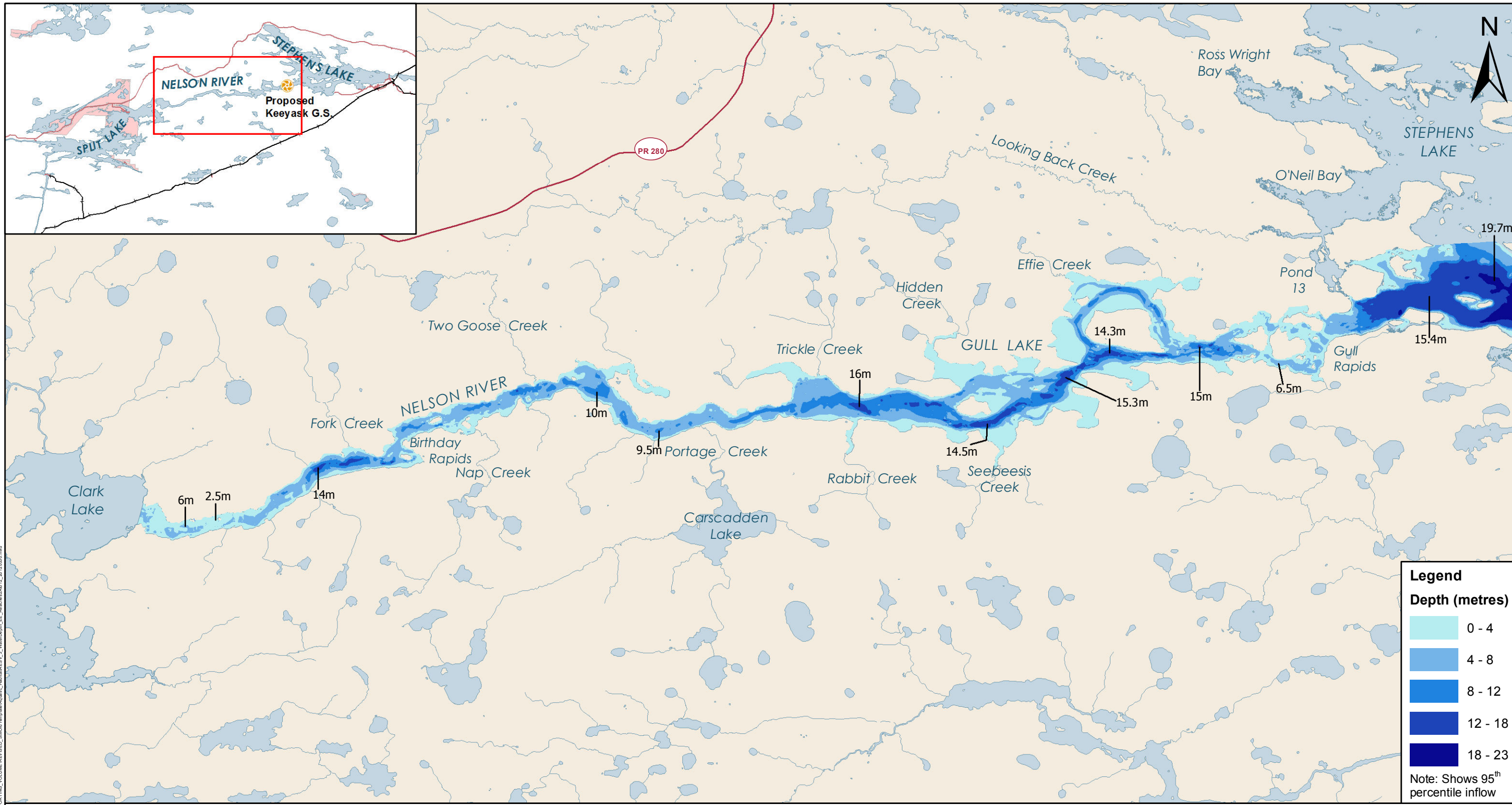


Keeyask Generation Project Environmental Impact Statement

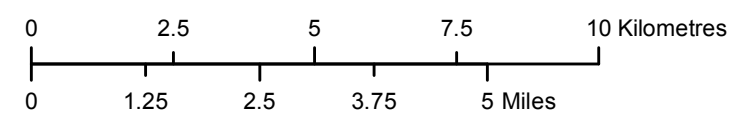
Supporting Volume Aquatic Environment



June 2012



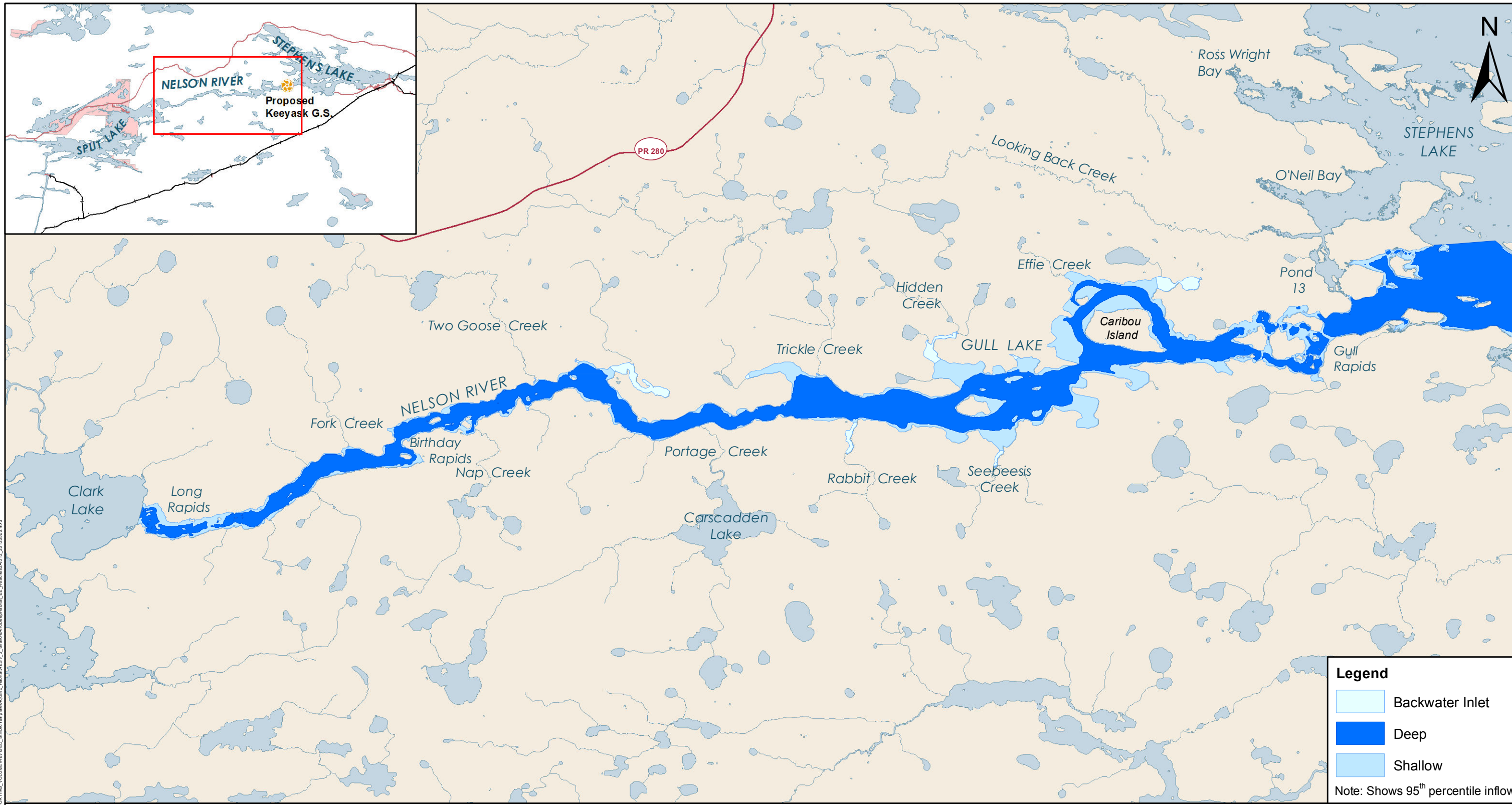
File Location: C:\ES\Keeyask\Subarea_Maps\SUPPORTING_VOLUMES\REVISED_Support\Map\Aquatic_Maps\REVISED_20120801.mxd



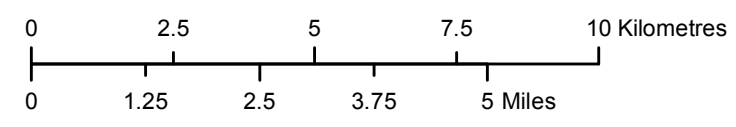
Projection: UTM Zone 15, NAD 83
 Data Source: NTS base 1:50 000
 Stephens Lake Shoreline - Quickbird@Digitalglobe, 2006
 Nelson River Shoreline modelled by Manitoba Hydro

Water Depth

Existing Environment - Reaches 2A to 12



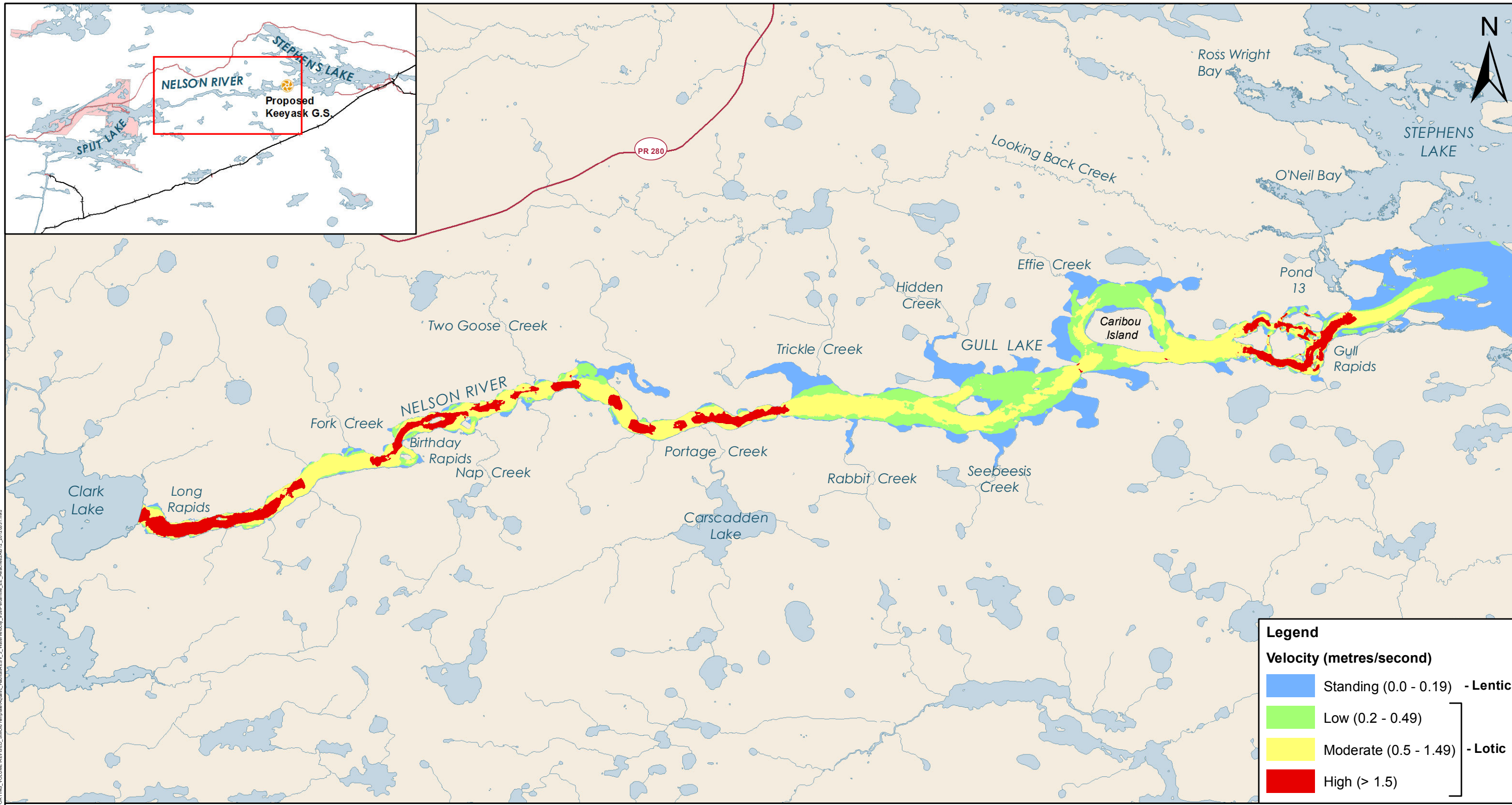
File Location: G:\EEB\Keyyask\Subarea_Maps\SUPPORTING_VOLUMES\REVISED_SAR\SAR\MapArea\Acoustic_Maps\MapArea\MapArea_3_Shallow\MapArea_3_Shallow_2012_0225.mxd



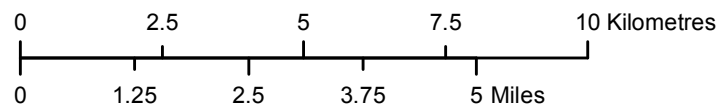
Projection: UTM Zone 15, NAD 83
 Data Source: NTS base 1:50 000
 Stephens Lake Shoreline - Quickbird@Digitalglobe, 2006
 Nelson River Shoreline modelled by Manitoba Hydro

Shallow and Deep Habitat

Existing Environment - Reaches 2A to 12

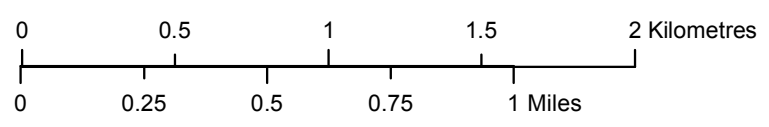
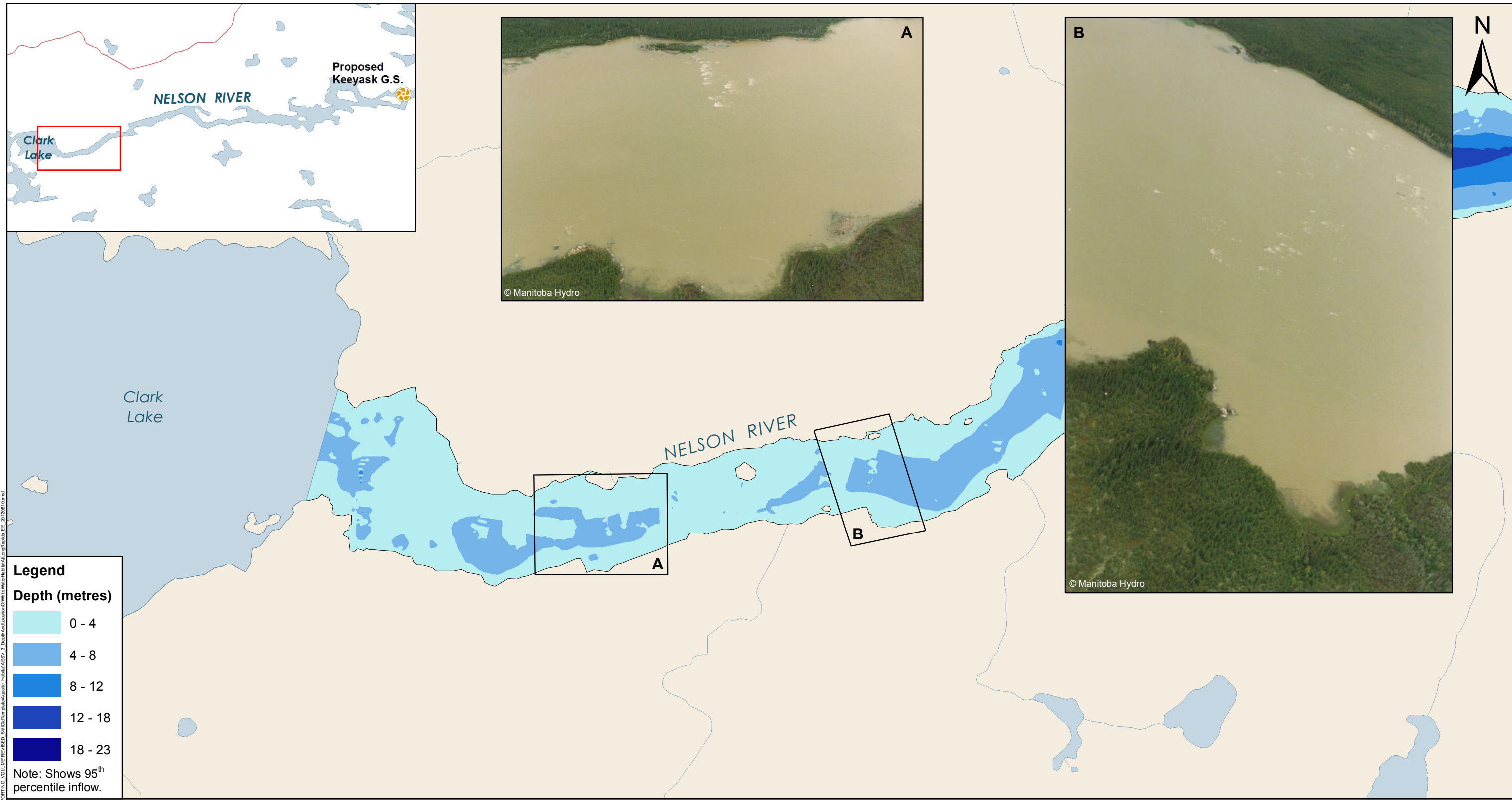


File Location: C:\ES\Keeyask\Subarea_Maps\SUPPORTING_VOLUME\REVISED_SAR\02\Map\Aquatic_Habitat\REV_3_WaterVelocity_95P_Percentile_EE_Reaches2Ato12_20120831.mxd



Projection: UTM Zone 15, NAD 83
 Data Source: NTS base 1:50 000
 Stephens Lake Shoreline - Quickbird@Digitalglobe, 2006
 Nelson River Shoreline modelled by Manitoba Hydro

Water Velocity at 95th Percentile Inflow
 Existing Environment - Reaches 2A to 12



Projection: UTM Zone 15, NAD 83
 Data Source: NTS base 1:50 000,
 Nelson River Shoreline modelled by Manitoba Hydro

**Depth and Location of White Water Habitat
 at Long Rapids**
 Existing Environment - Reaches 2A and 2B

