

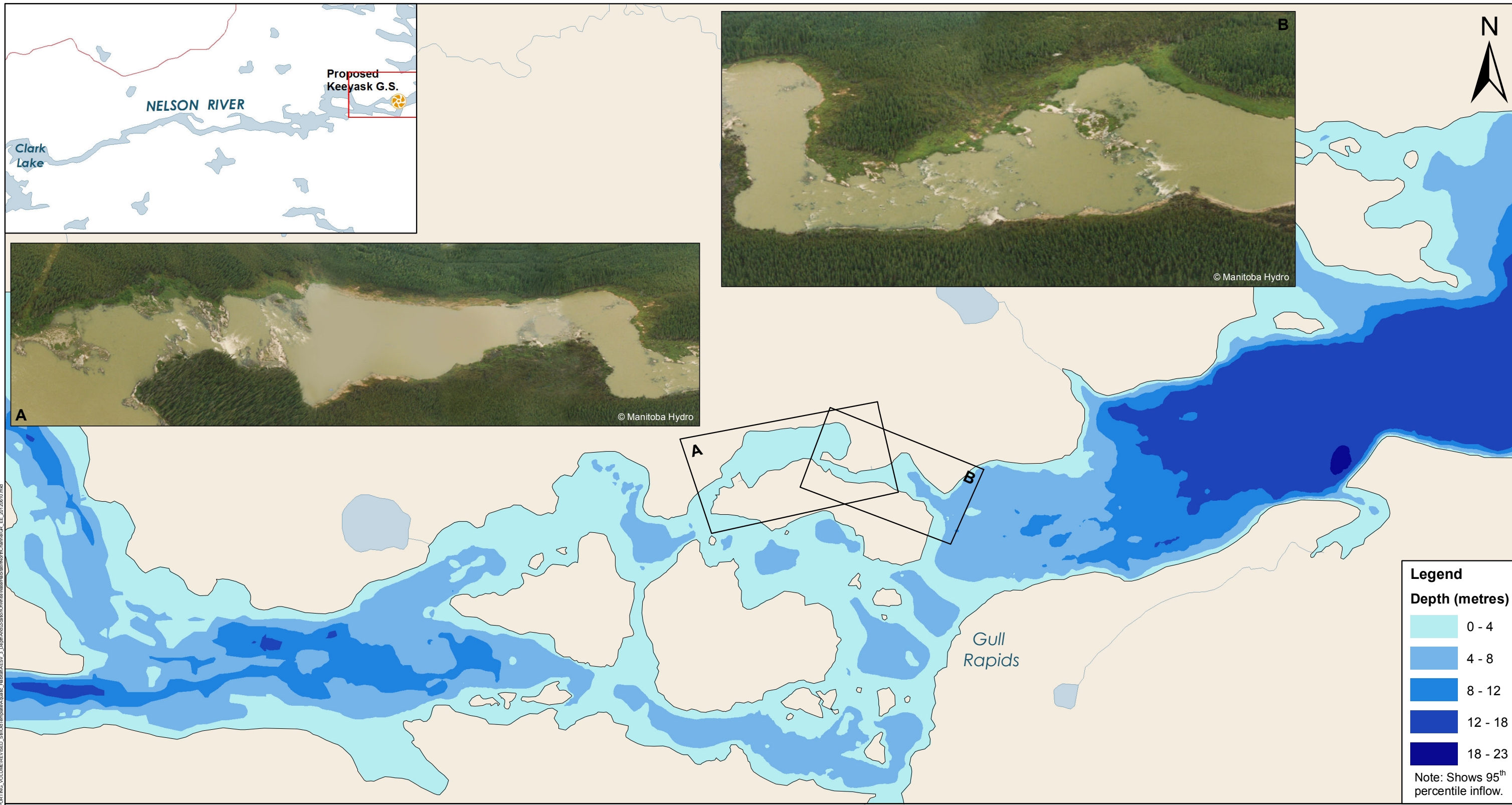


# Keeyask Generation Project Environmental Impact Statement

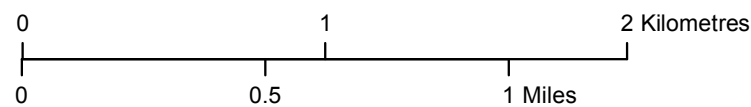
## Supporting Volume Aquatic Environment



June 2012



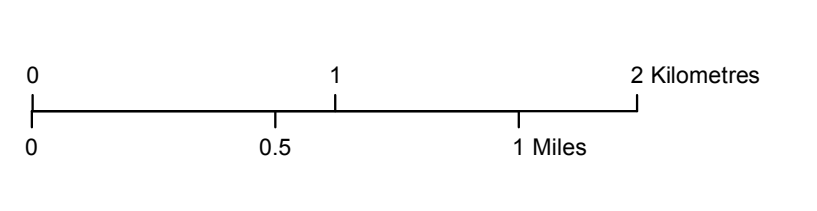
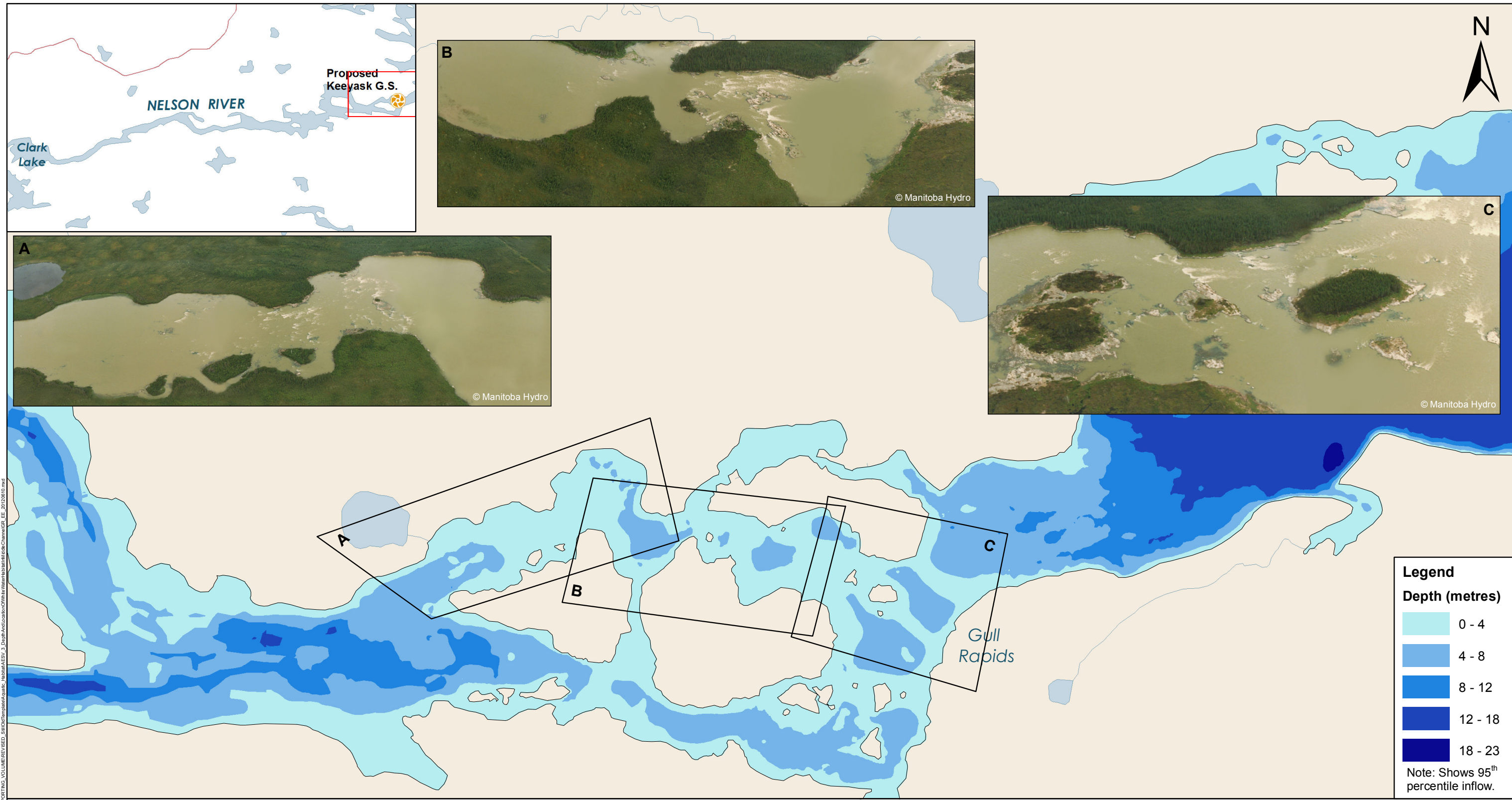
File Location: C:\ES\Keeyask\Subarea\_Maps\SUPPORTING\_VOLUMES\REVISED\_SINCE2016\Keeyask\_Hydro\Map3-11\Map3-11\_2016.mxd



Projection: UTM Zone 15, NAD 83  
 Data Source: NTS base 1:50 000,  
 Nelson River Shoreline modelled by Manitoba Hydro

## Depth and Location of White Water Habitat in the North Channel of Gull Rapids

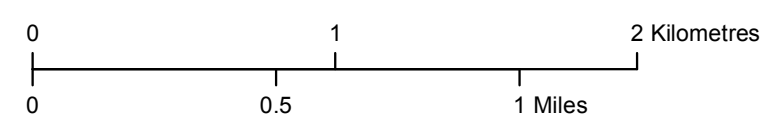
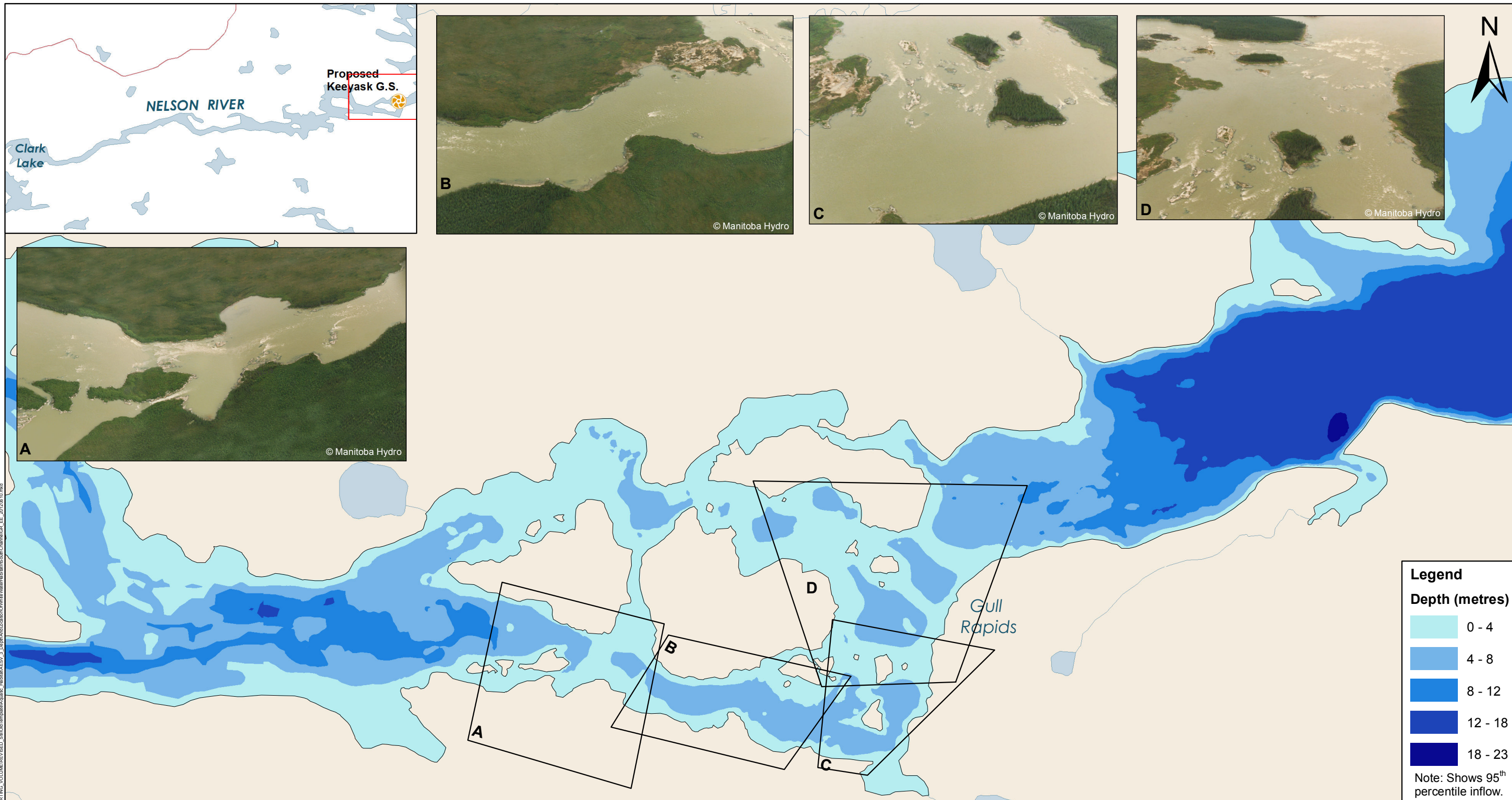
Existing Environment - Reaches 9A and 9B



Projection: UTM Zone 15, NAD 83  
 Data Source: NTS base 1:50 000,  
 Nelson River Shoreline modelled by Manitoba Hydro

## Depth and Location of White Water Habitat in the Middle Channel of Gull Rapids

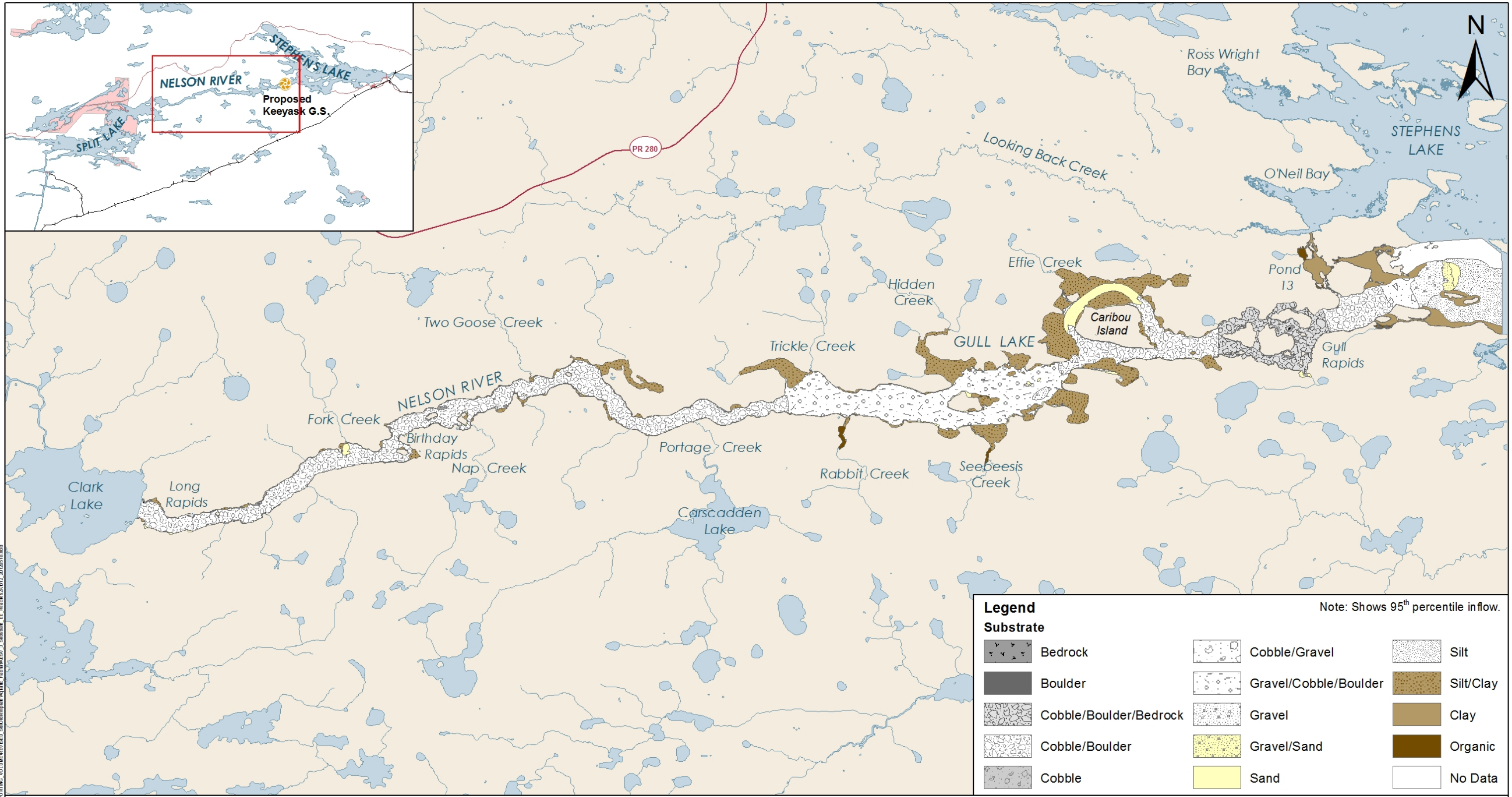
Existing Environment - Reaches 9A and 9B



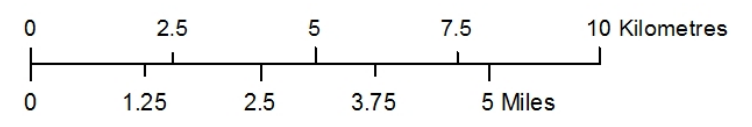
Projection: UTM Zone 15, NAD 83  
 Data Source: NTS base 1:50 000,  
 Nelson River Shoreline modelled by Manitoba Hydro

**Depth and Location of White Water Habitat  
 in the South Channel of Gull Rapids**  
 Existing Environment - Reaches 9A and 9B

File Location: C:\ES\Keeyask\Subarea\_1\GIS\MapSupporting\_VOLUMEREVISED\_SINOTemplates\Keeyask\_Hydro\AESV\_3\_DepthAndLocationOfWhiteWaterHabitatSouthChannel\_CE\_20120110.mxd



DR. JOCK MACLEOD CONSULTING ENGINEERS LTD. VOLUME 1 OF 2 - SUBSTRATE DATA - 2006



Projection: UTM Zone 15, NAD 83  
 Data Source: NTS base 1:50 000  
 Stephens Lake Shoreline - Quickbird@Digitalglobe, 2006  
 Nelson River Shoreline modelled by Manitoba Hydro

**Substrate**  
 Existing Environment - Reaches 2A to 12