



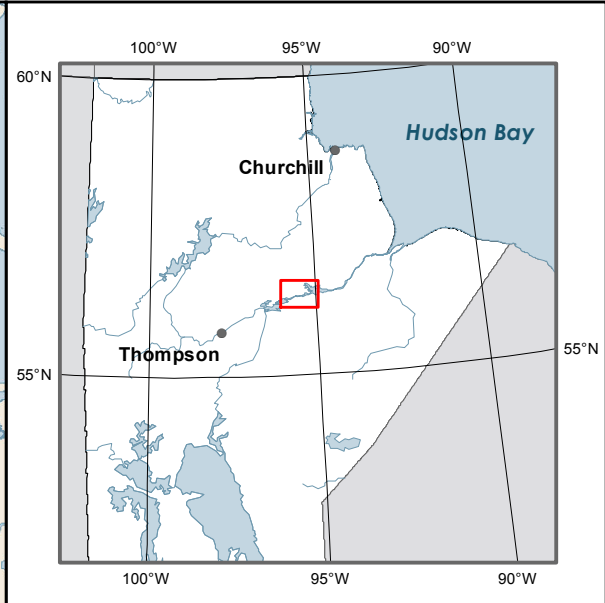
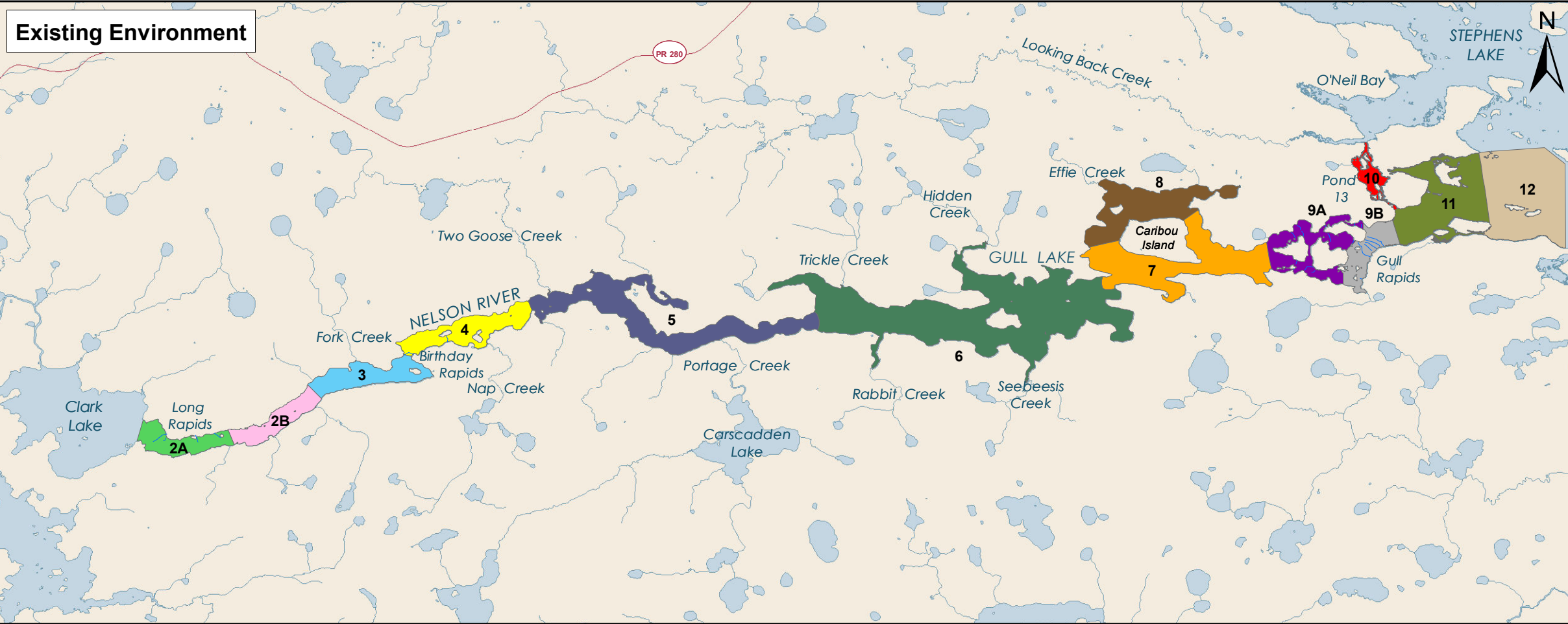
Keeyask Generation Project Environmental Impact Statement

Supporting Volume Aquatic Environment



June 2012

Existing Environment



Legend

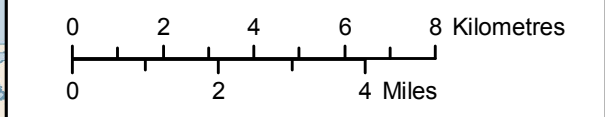
Reaches

 2A	 6	 10
 2B	 7	 11
 3	 8	 12
 4	 9A	
 5	 9B	

Keyeyask Principal Structures

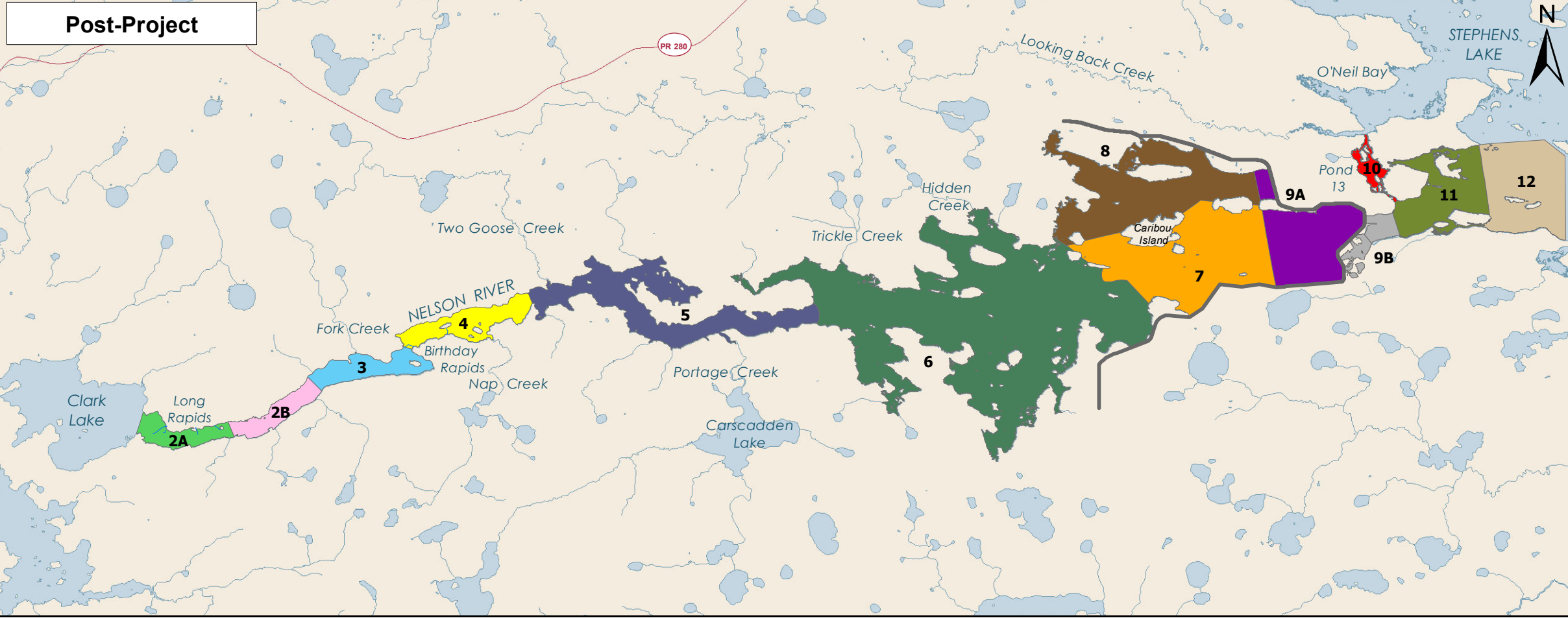
Note: Existing Environment frame shows 95th percentile inflow and Post-Project frame shows 95th percentile inflow. Reservoir at 159 metres Above Sea Level.

Projection: UTM Zone 15, NAD 83
 Data Source: NTS base 1:50 000
 Stephens Lake Shoreline - Quickbird@Digitalglobe, 2006
 Nelson River Shoreline modelled by Manitoba Hydro



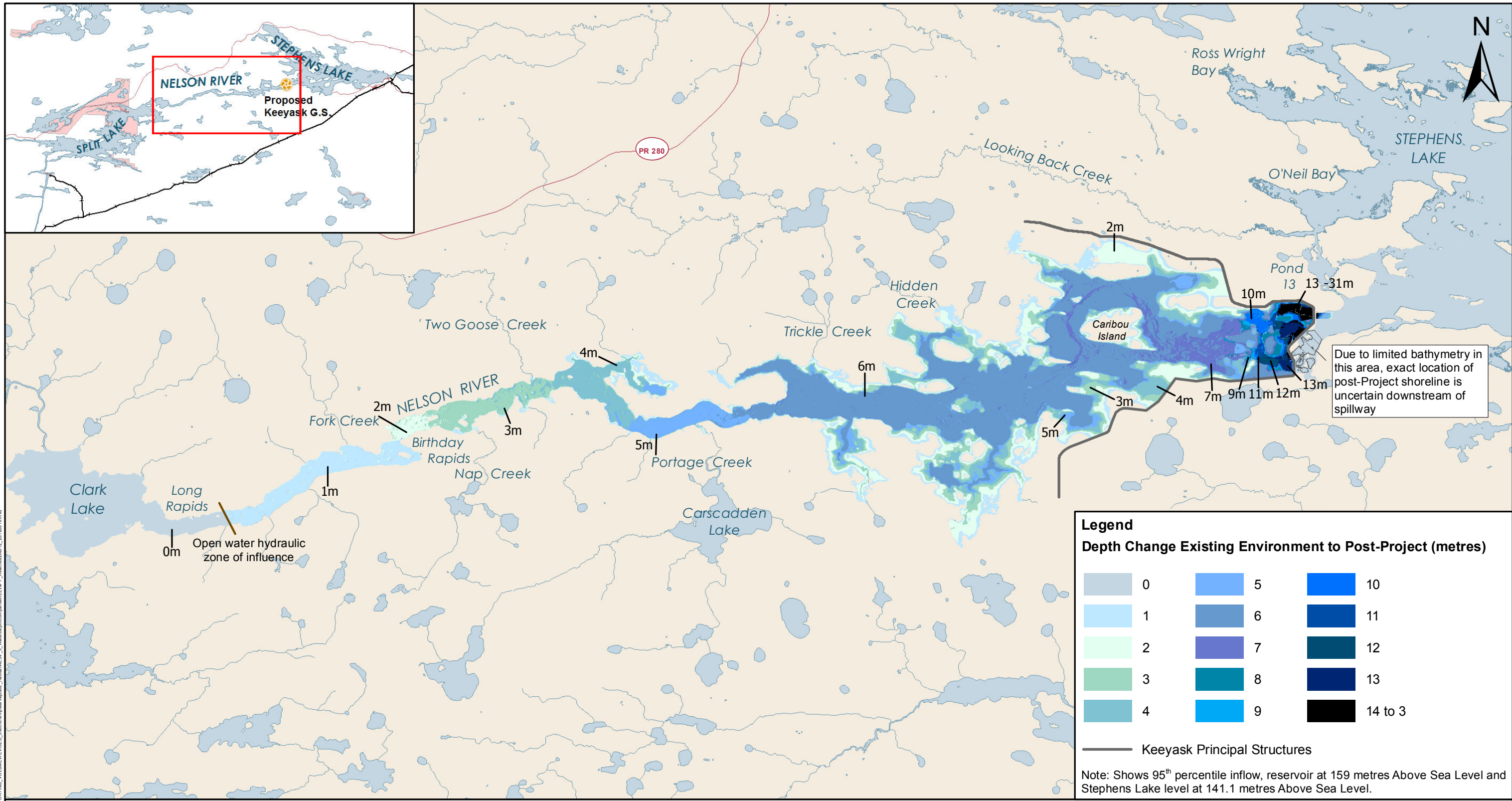
Aquatic Habitat Reaches

Post-Project

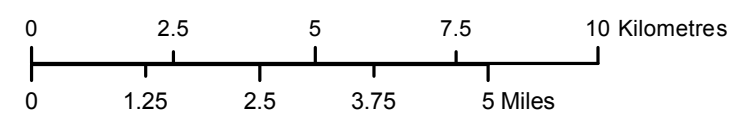


File Location: G:\ES\Keyeyask\Public\Map\Map_REVISED_Supporting_Volumetric\Map\Map_REVISED_V_3_AquaticHabitatReaches_EE_vrpp_20100801.mxd





File Location: G:\EE\Keyask\Subarea_Maps\Supporting_Volumes\REVISED_SMD\TimeAreaAquatic_Habitat\ESV_3_WaterDepthComparisonEE.ppt_Reaches2Ato12_20120610.mxd



Projection: UTM Zone 15, NAD 83
 Data Source: NTS base 1:50 000
 Stephens Lake Shoreline - Quickbird@Digitalglobe, 2006
 Nelson River Shoreline modelled by Manitoba Hydro.

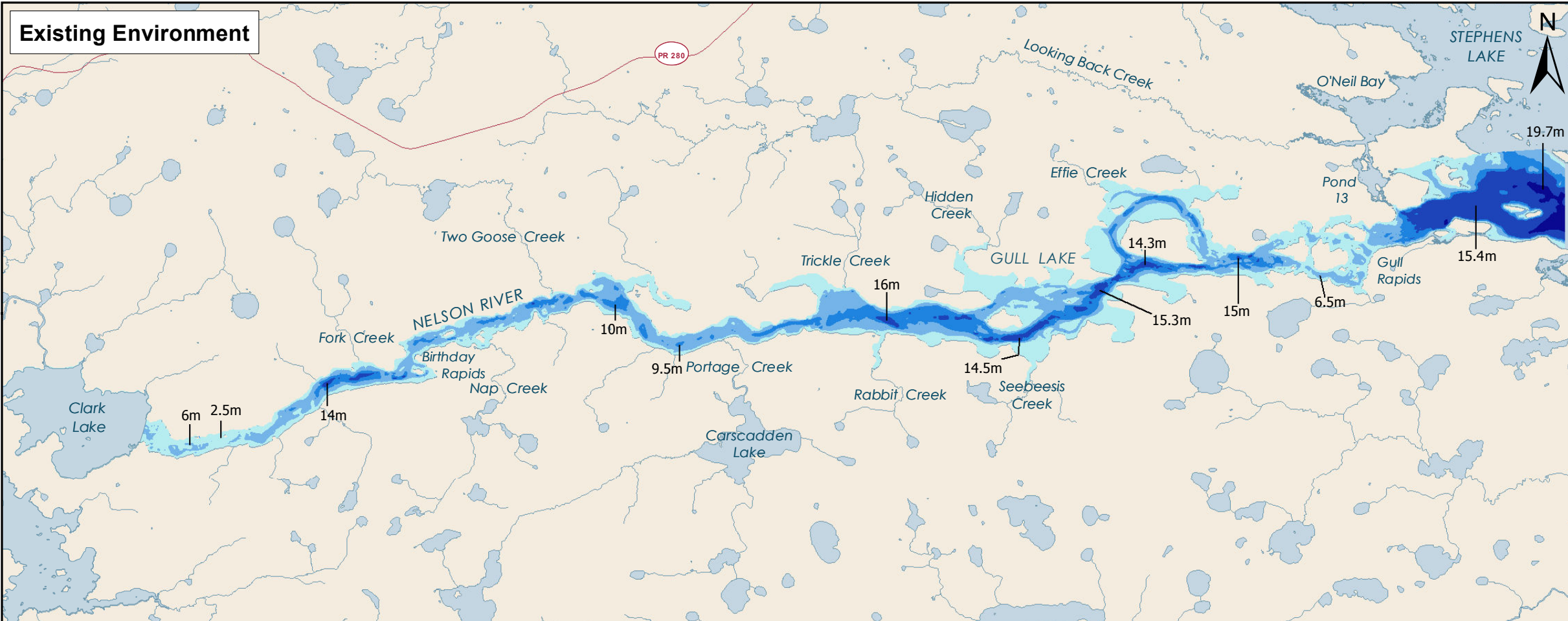
Water Depth Comparison Existing Environment versus Post-Project Reaches 2A to 12

Legend
 Depth Change Existing Environment to Post-Project (metres)

	0		5		10
	1		6		11
	2		7		12
	3		8		13
	4		9		14 to 3

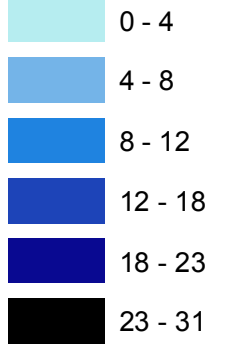
— Keyyask Principal Structures

Note: Shows 95th percentile inflow, reservoir at 159 metres Above Sea Level and Stephens Lake level at 141.1 metres Above Sea Level.

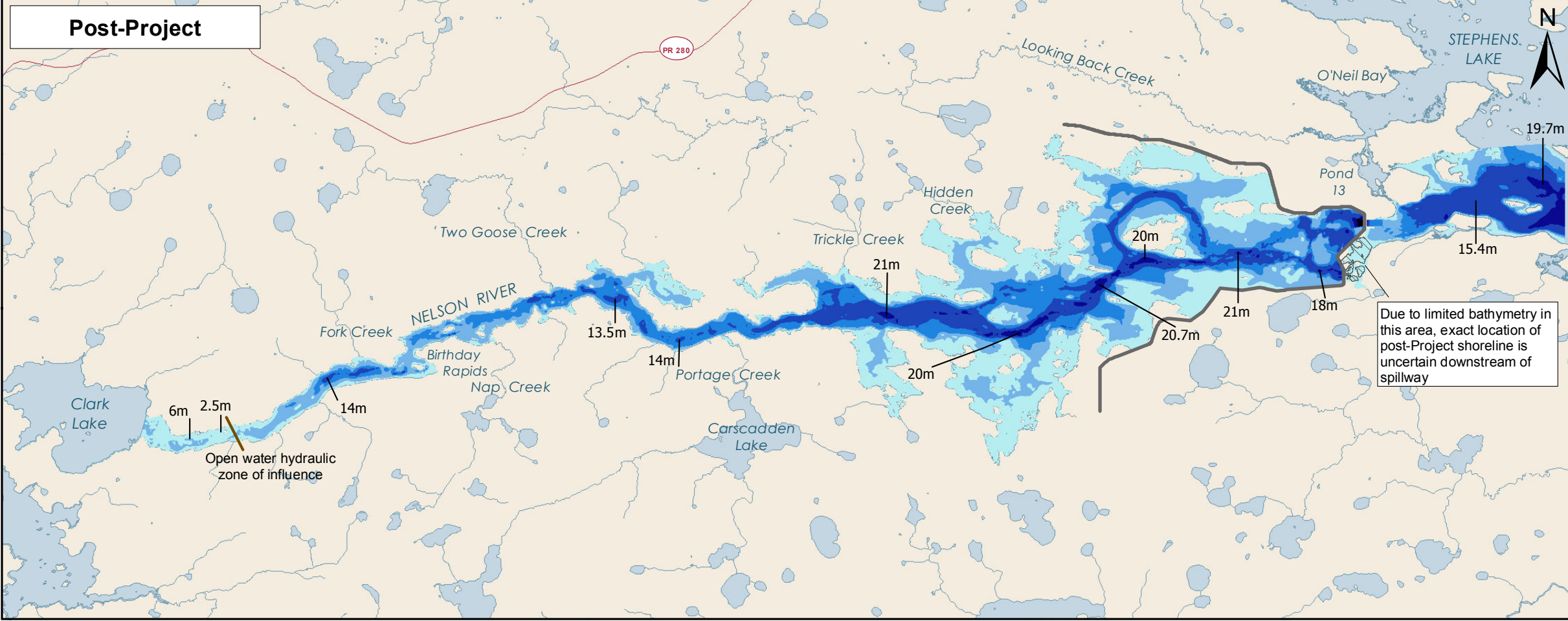


Legend

Depth (metres)

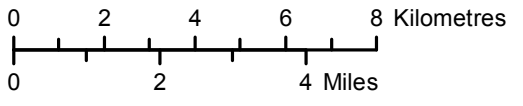


— Keyask Principal Structures



Note: Existing environment frame shows 95th percentile inflow and post-Project frame shows 95th percentile inflow, reservoir at 159 metres Above Sea Level and Stephens Lake level at 141.1 metres Above Sea Level.

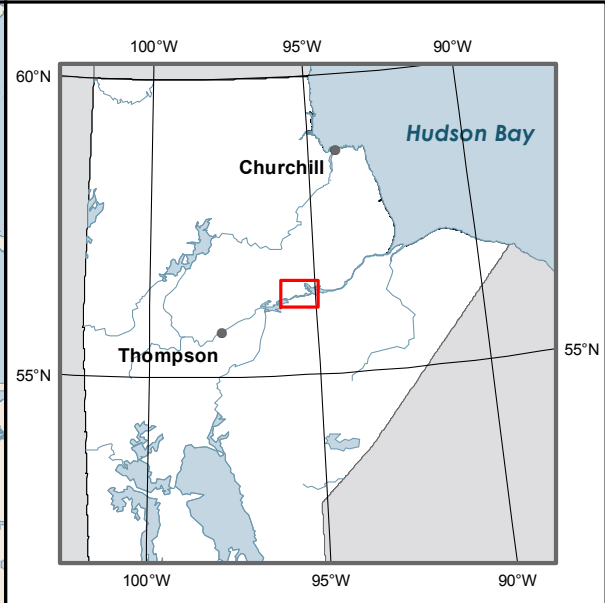
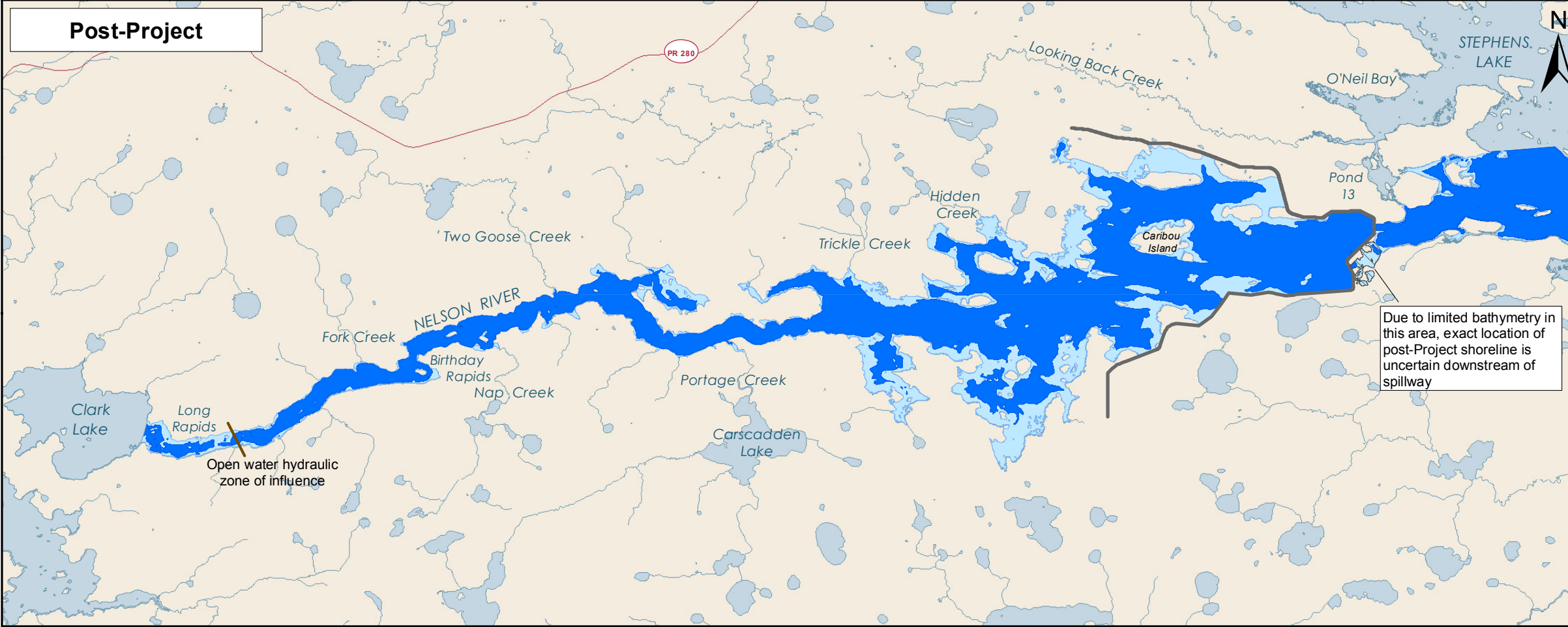
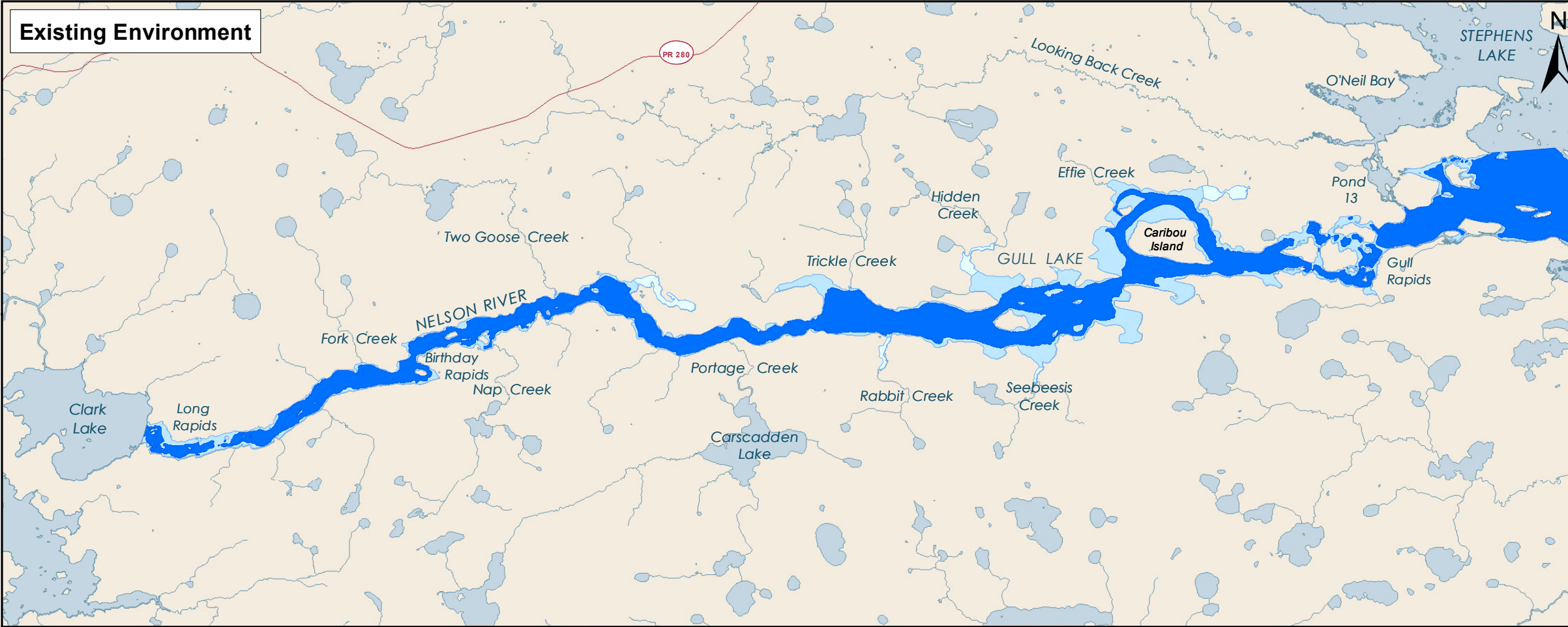
Projection: UTM Zone 15, NAD 83
 Data Source: NTS base 1:50 000
 Stephens Lake Shoreline - Quickbird@Digitalglobe, 2006
 Nelson River Shoreline modelled by Manitoba Hydro



Water Depth Reaches 2A to 12



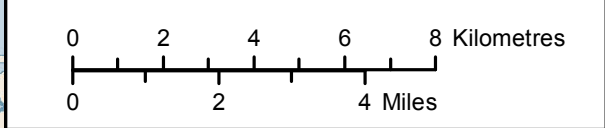
File Location: G:\EIS\Keyask\Map\Map_3\Map_3_Volume_1\REVISED_SOLID_Template\Map_3_WaterDepth_EIS_V1_20120610.mxd



- #### Legend
- Backwater Inlet
 - Deep
 - Shallow
 - Keeyask Principal Structures

Note: Existing environment frame shows 95th percentile inflow and post-Project frame shows 95th percentile inflow, reservoir at 159 metres Above Sea Level and Stephens Lake level at 141.1 metres Above Sea Level.

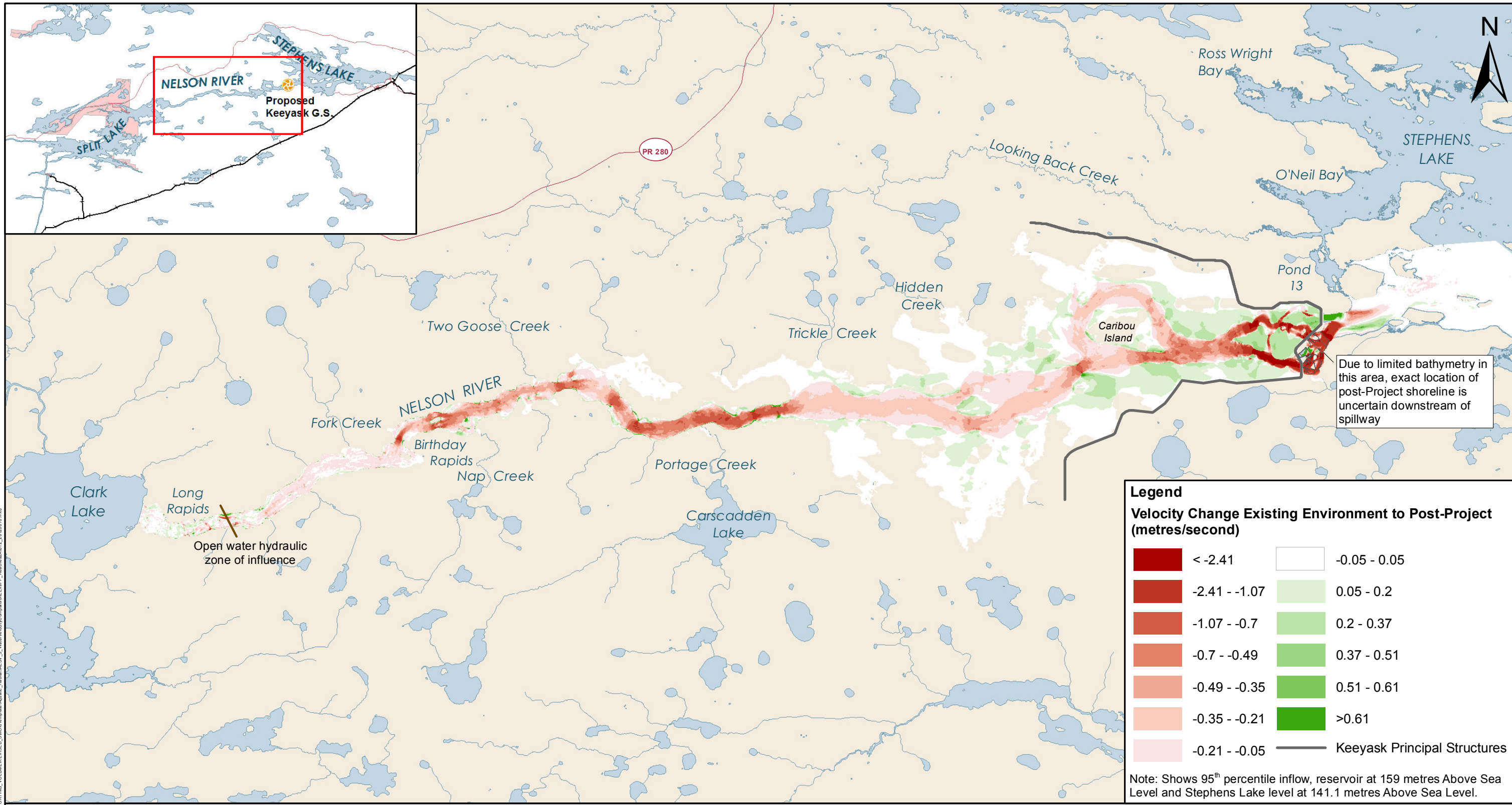
Projection: UTM Zone 15, NAD 83
 Data Source: NTS base 1:50 000
 Stephens Lake Shoreline - Quickbird@Digitalglobe, 2006
 Nelson River Shoreline modelled by Manitoba Hydro



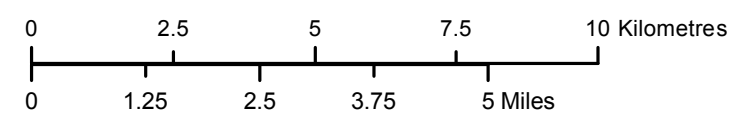
Shallow and Deep Habitat Reaches 2A to 12



File Location: G:\EIS\Keeyask\Map\Map3-29\Map3-29_120712.mxd



File Location: G:\EBS\Keeyask\Shaban_MCO\CS\SUPPORTING_VOLUME\REVISED_SMD\TimeAreaAquatic_Habitat\ESV_3_WaterVelocityComparison\ESV3PP_Reaches2Ato12_20200110.mxd



Projection: UTM Zone 15, NAD 83
 Data Source: NTS base 1:50 000
 Stephens Lake Shoreline - Quickbird@Digitalglobe, 2006
 Nelson River Shoreline modelled by Manitoba Hydro.

Water Velocity Comparison Existing Environment versus Post-Project Reaches 2A to 12