

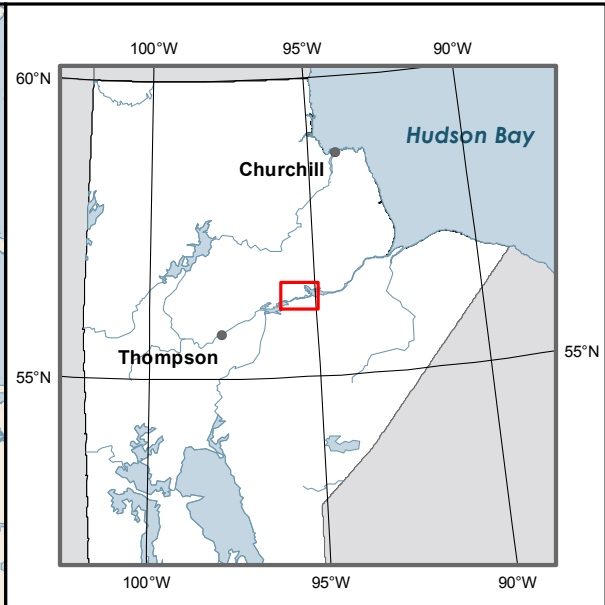
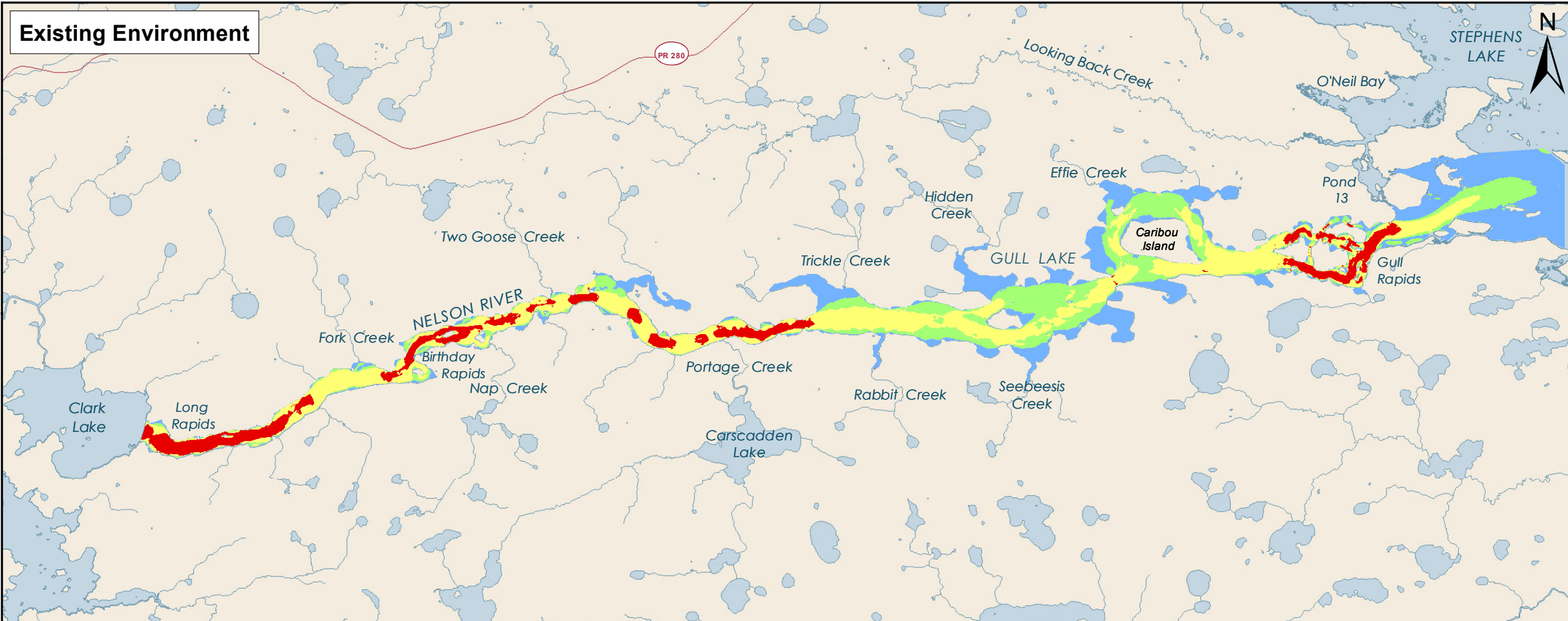


Keeyask Generation Project Environmental Impact Statement

Supporting Volume Aquatic Environment



June 2012



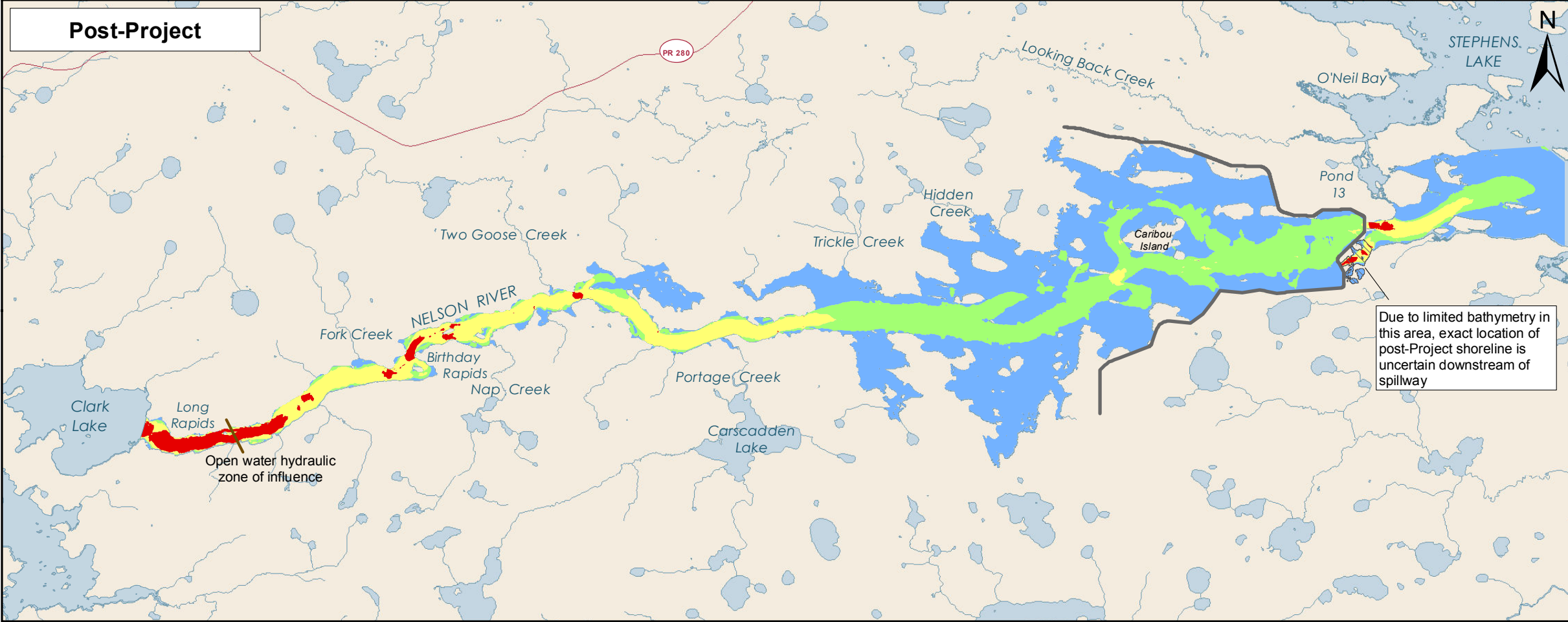
Legend

Velocity (metres/second)

- Standing (0.0 - 0.19) - Lentic
- Low (0.2 - 0.49)
- Moderate (0.5 - 1.49) - Lotic
- High (> 1.5)

— Keyyask Principal Structures

Note: Post-Project frame shows reservoir at 159 metres Above Sea Level and Stephens Lake level at 141.1 metres Above Sea Level.



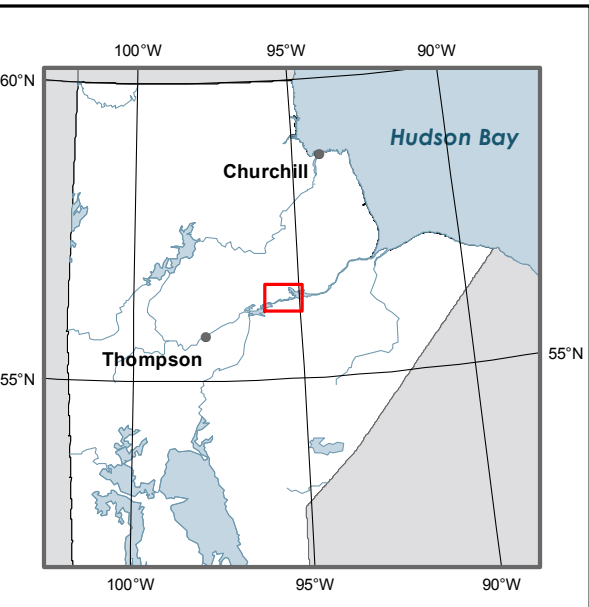
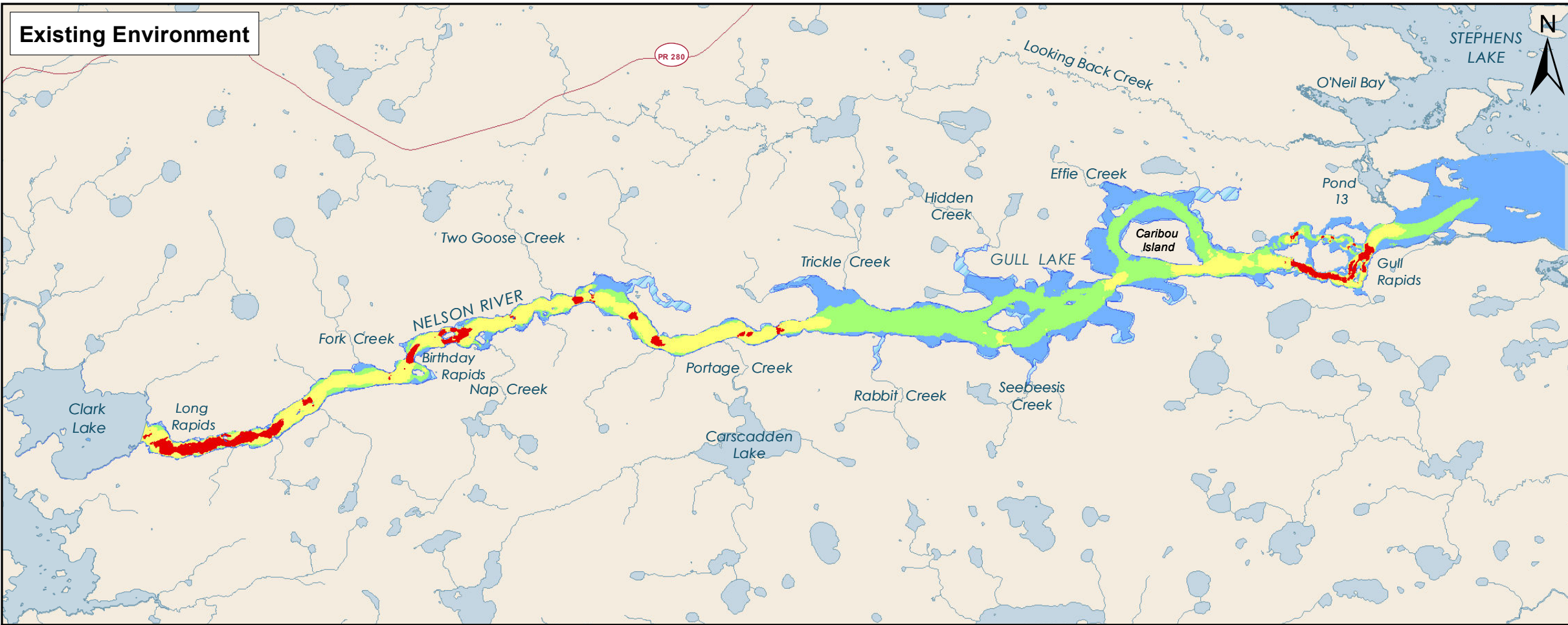
Projection: UTM Zone 15, NAD 83
 Data Source: NTS base 1:50 000
 Stephens Lake Shoreline - Quickbird@DigitalGlobe, 2006
 Nelson River Shoreline modelled by Manitoba Hydro

0 2 4 6 8 Kilometres
 0 2 4 Miles

Water Velocity at 95th Percentile Inflow Reaches 2A to 12



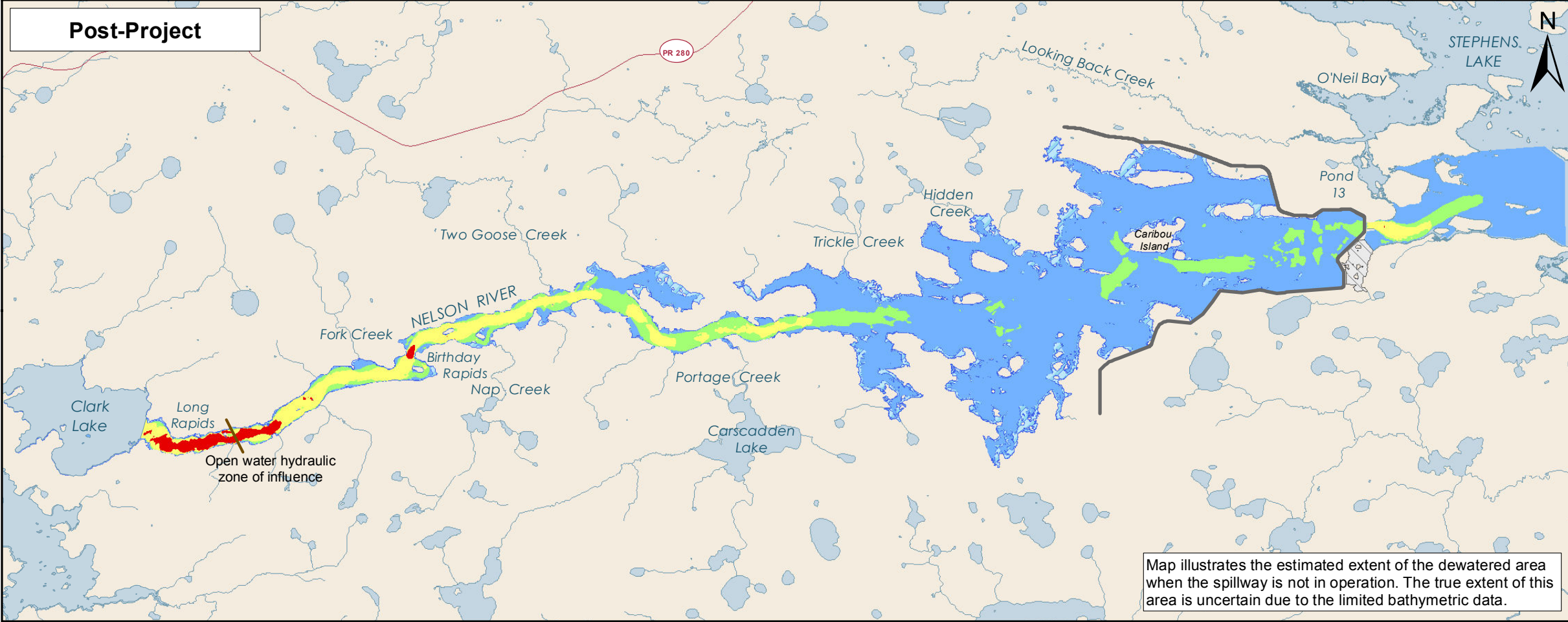
File Location: G:\ES\Keeyask\WP\blabla_MXD\SU\PORTING_VOLUMES\REVISED_SSHOUD\Temp\MapArea\MapArea_VALESV_3_WaterVelocity_95thPercentile_EE\wp_Reach\MapArea_VALESV_3_20120810.mxd



- ### Legend
- Velocity (metres/second)**
- Standing (0.0 - 0.19) - Lentic
 - Low (0.2 - 0.49)
 - Moderate (0.5 - 1.49) - Lotic
 - High (> 1.5)
- Key Features:**
- Intermittently Exposed Zone
 - Potential Dewatered Area
 - Keyask Principal Structures
- Note: Post-project frame shows reservoir at 158 metres Above Sea Level and Stephens Lake level at 139.1 metres Above Sea Level. Extents of dewatered area are estimated based on the existing environment 95th percentile flow.

Projection: UTM Zone 15, NAD 83
 Data Source: NTS base 1:50 000
 Stephens Lake Shoreline - Quickbird@Digitalglobe, 2006
 Nelson River Shoreline modelled by Manitoba Hydro

0 2 4 6 8 Kilometres
 0 2 4 Miles

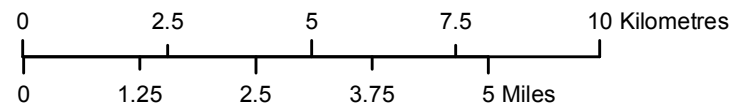
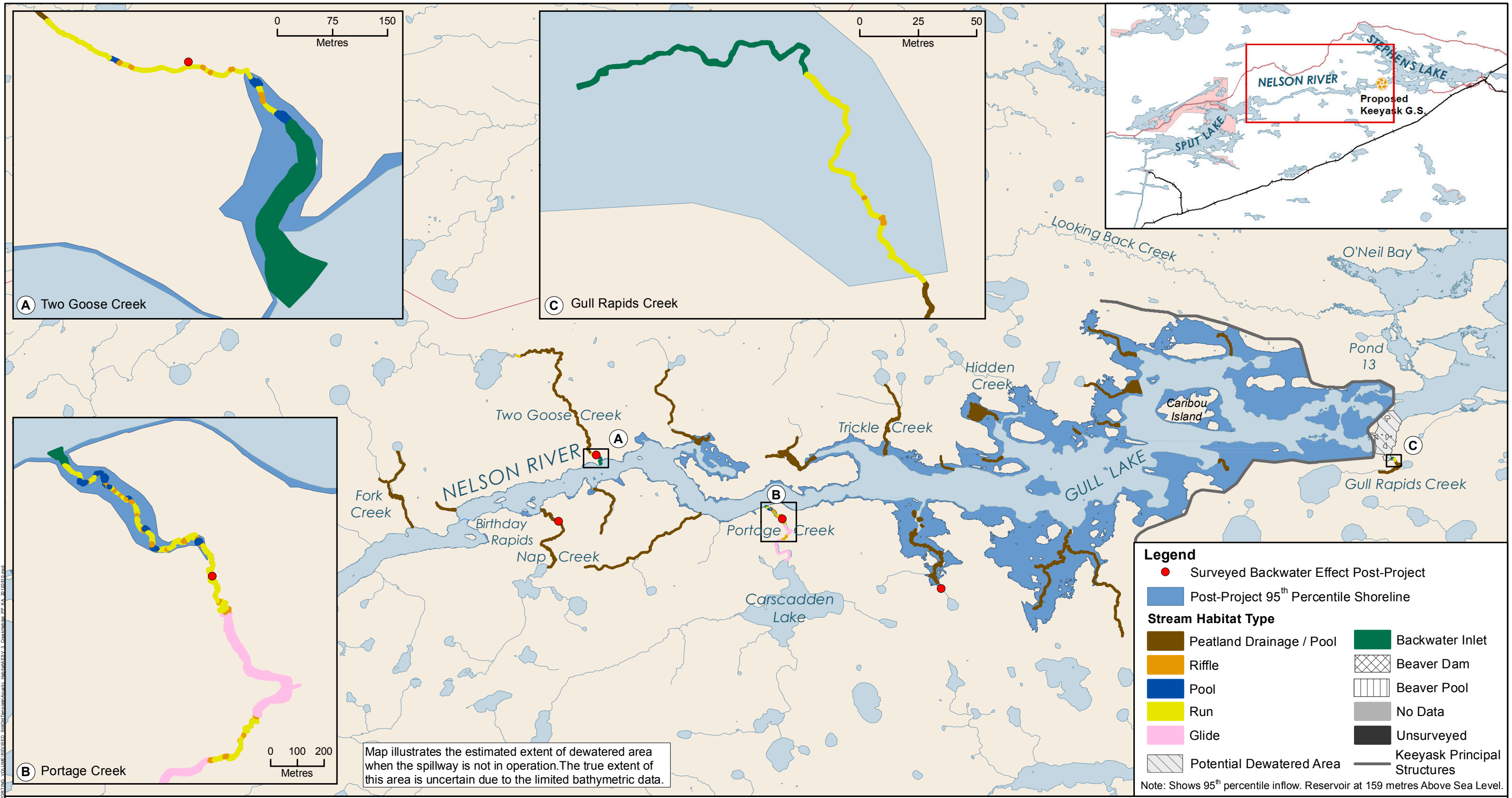


Map illustrates the estimated extent of the dewatered area when the spillway is not in operation. The true extent of this area is uncertain due to the limited bathymetric data.

Water Velocity at 5th Percentile Inflow Reaches 2A to 12



File Location: G:\ES\Keyask\Map\Map_JND\SU\REPORTING_VOLUME\REVISED_SHELL\TEMP\Map\Map_HABITAT\ESV_3_WaterVelocity_5thPercentile_EEEVPP_Research\Map12_20120610.mxd



Projection: UTM Zone 15, NAD 83
 Data Source: NTS base 1:50 000
 Stephens Lake Shoreline - Quickbird@Digitalglobe, 2006
 Nelson River Shoreline modelled by Manitoba Hydro.
 Extents of dewatered area are estimated based on the existing environment 95th percentile flow.

Creek Habitat Post-Project - Reaches 3 to 9B