



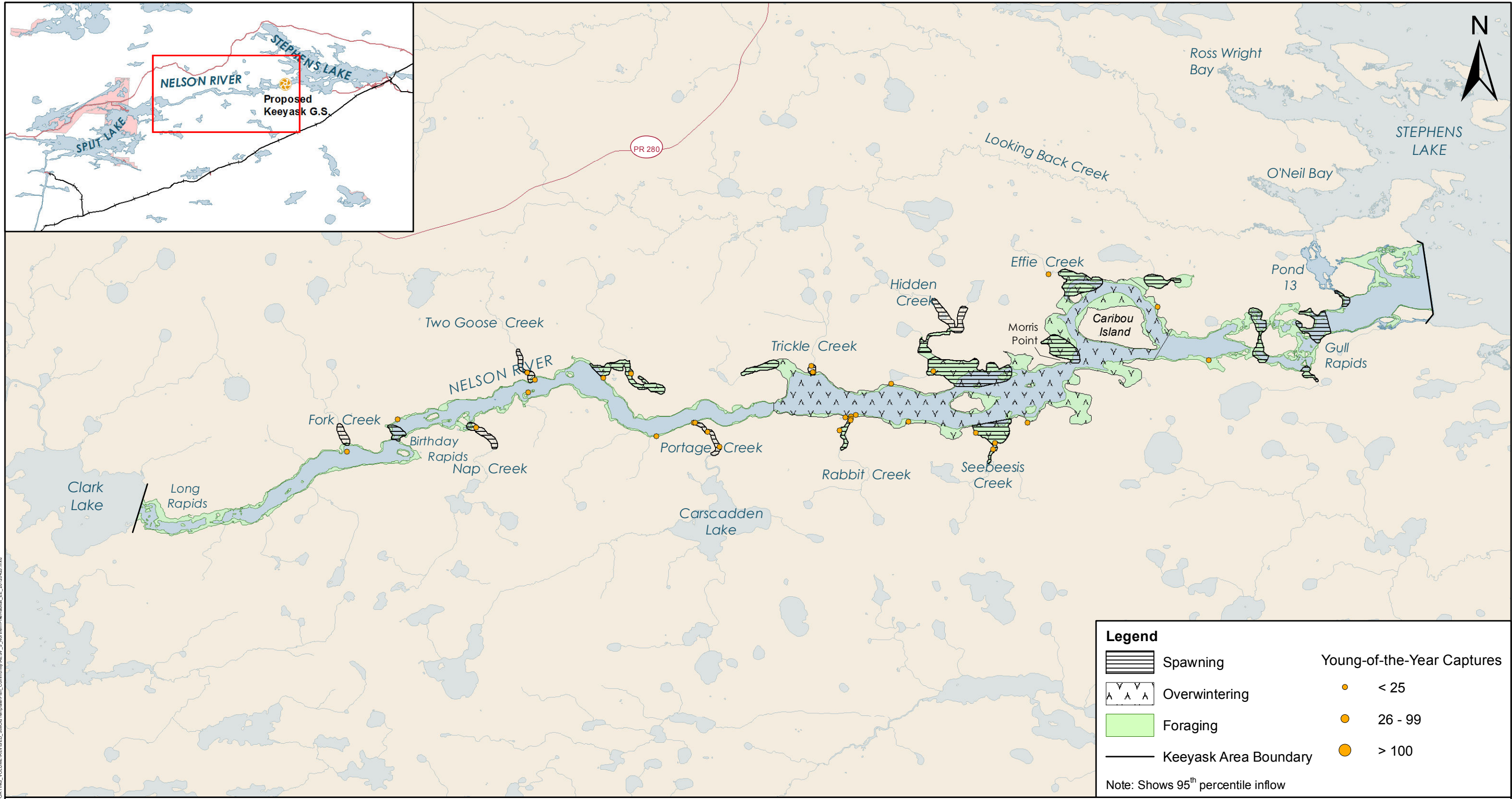
# Keeyask Generation Project Environmental Impact Statement

## Supporting Volume Aquatic Environment

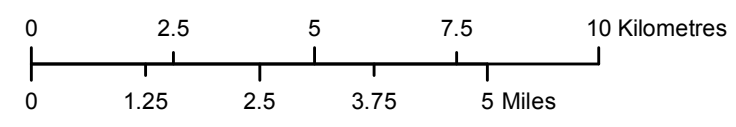


June 2012





File Location: G:\ES\Keeyask\Subarea\_Maps\SUPPORTING\_VOLUMES\REVISED\_Support\Map\Final\_Community\AESV\_5\_NorthernPikeHabitat\_EE\_2010\_05.mxd

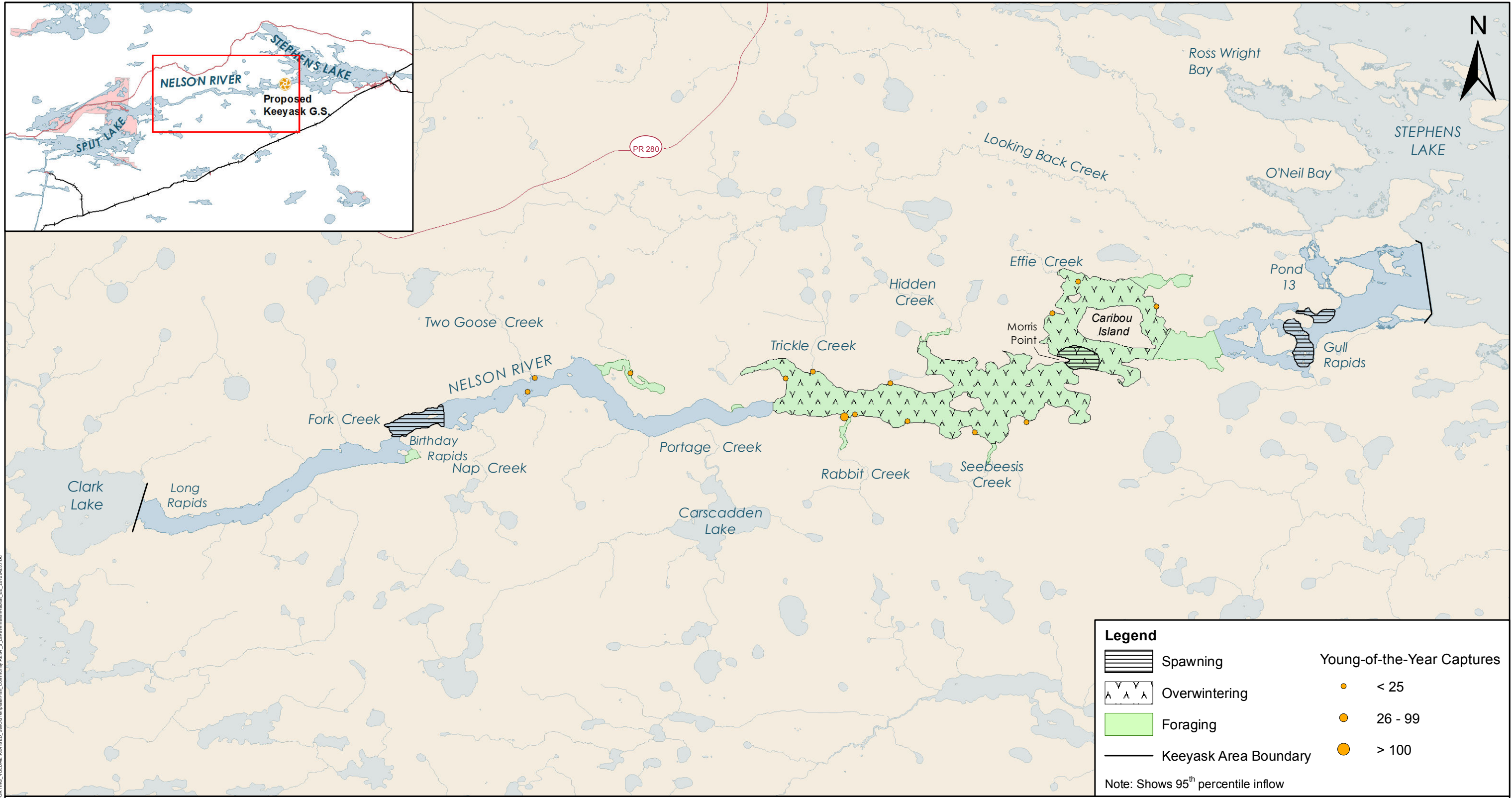


Projection: UTM Zone 15, NAD 83  
 Data Source: NTS base 1:50 000  
 Stephens Lake Shoreline - Quickbird@Digitalglobe, 2006  
 Nelson River Shoreline modelled by Manitoba Hydro

## Northern Pike Habitat

### Existing Environment - Keeyask Area

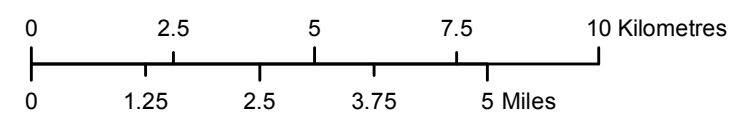




**Legend**

	Spawning		Young-of-the-Year Captures
	Overwintering		< 25
	Foraging		26 - 99
	Keeyask Area Boundary		> 100

Note: Shows 95<sup>th</sup> percentile inflow

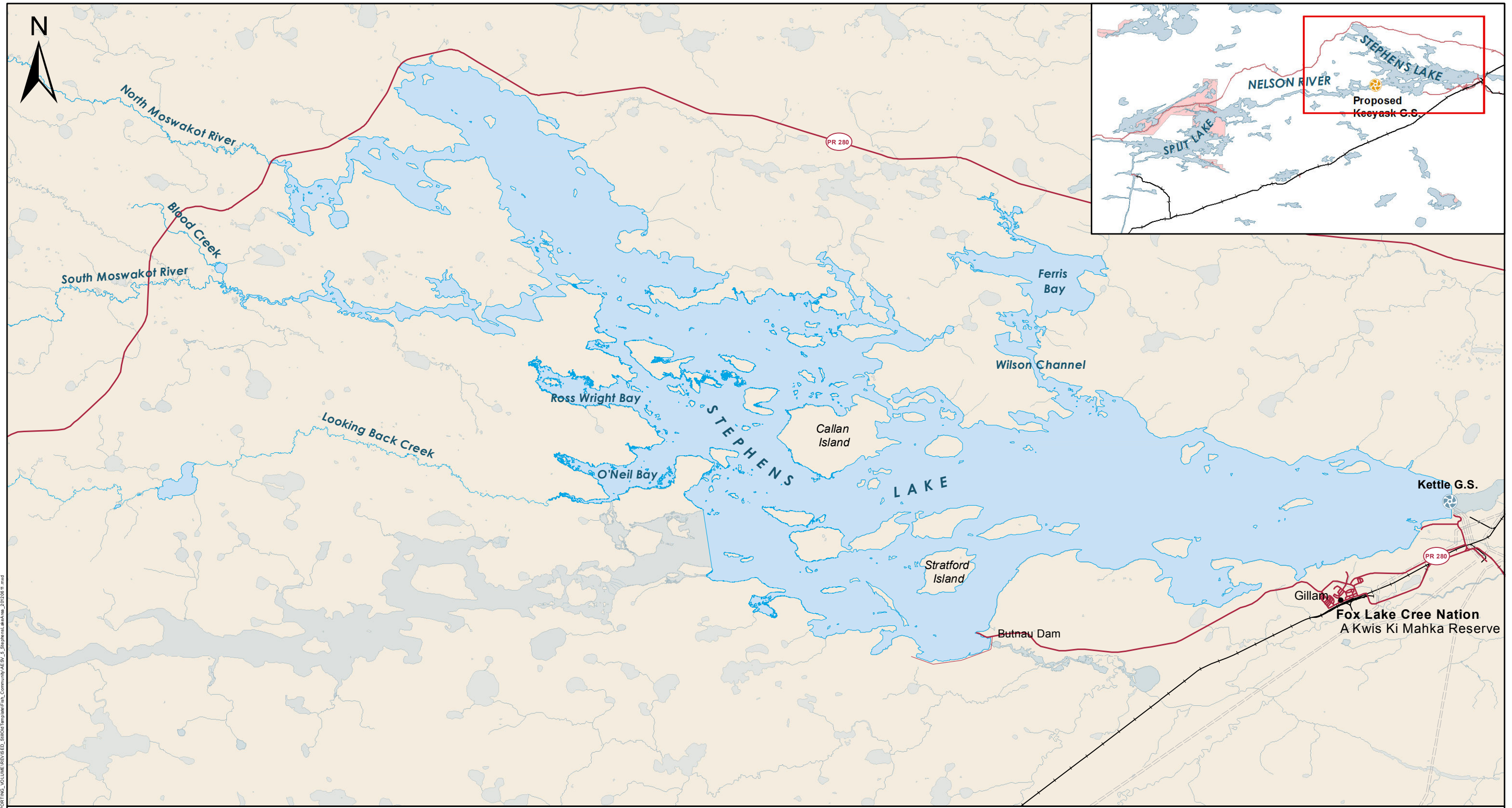


Projection: UTM Zone 15, NAD 83  
 Data Source: NTS base 1:50 000  
 Stephens Lake Shoreline - Quickbird@Digitalglobe, 2006  
 Nelson River Shoreline modelled by Manitoba Hydro

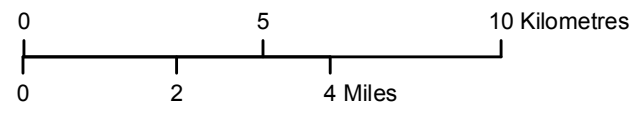
**Lake Whitefish Habitat**  
 Existing Environment - Keeyask Area

File Location: C:\ES\Keeyask\Subarea\_Maps\SUPPORTING\_VOLUME\REVISED\_Support\Map\Fish\_Community\AESV\_5\_LakeWhitefishHabitat\_EE\_20120423.mxd





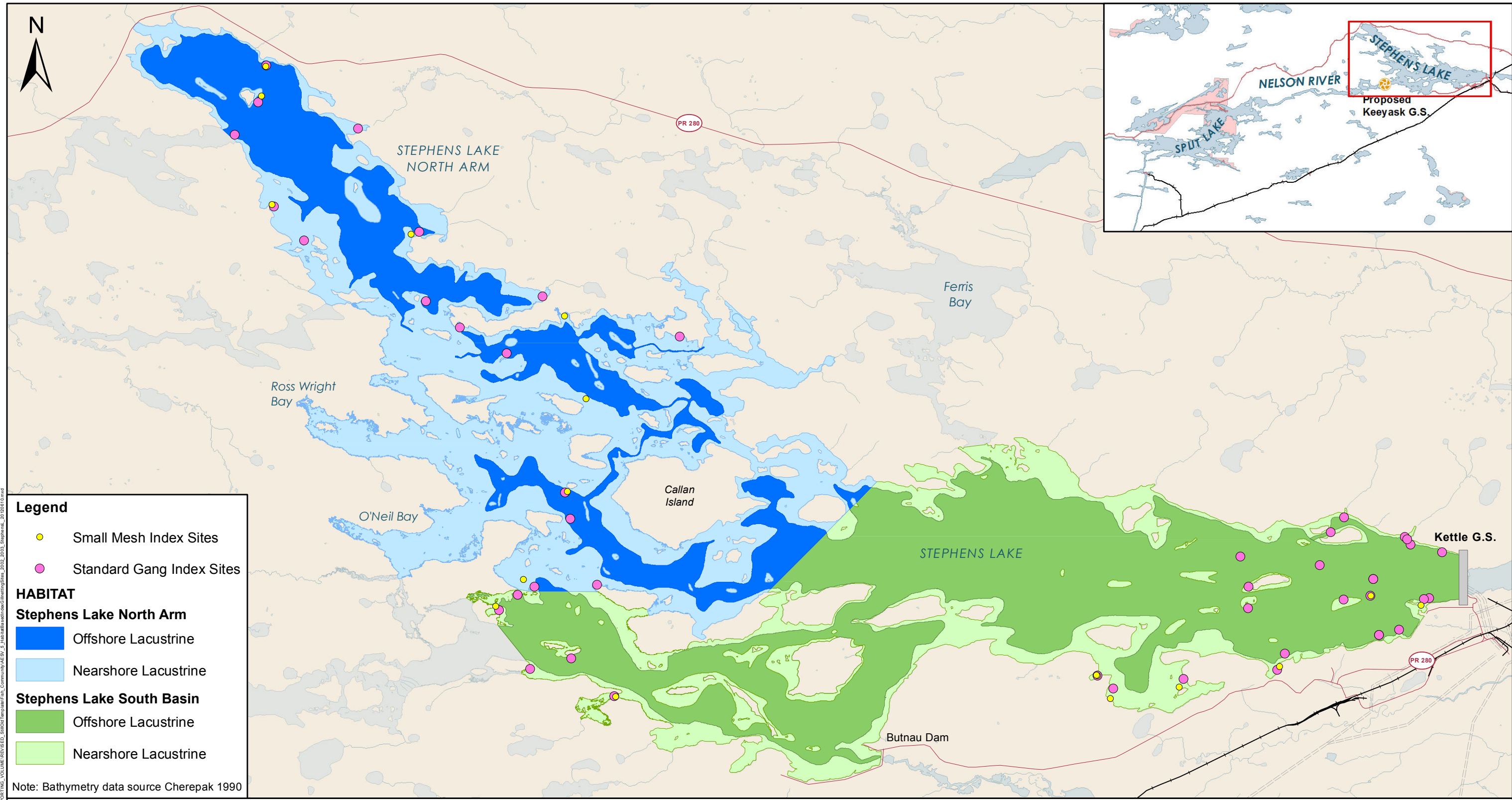
File Location: G:\EE\Keeyask\Subarea\_Maps\SUPPORTING\_VOLUME\REVISED\_SROD\Templates\Final\_Community\AESV\_5\_StephensLakeArea\_20200811.mxd



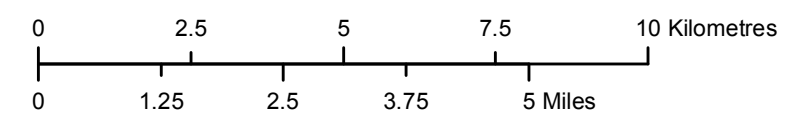
Projection: UTM Zone 15, NAD 83  
 Data Source: NTS base 1:50 000,  
 Stephens Lake Shoreline-Quickbird@Digitalglobe, 2006  
 Nelson River Shoreline modelled by Manitoba Hydro

## Stephens Lake Area





File Location: C:\ES\Keeyask\Subarea\_Maps\SUPPORTING\_VOLUME\REVISED\_Support\MapArea\Final\_Community\AESV\_5\_HabitatBasedIndexGillnettingSites\_2002\_2003\_Stephens\_20101010.mxd



Projection: UTM Zone 15, NAD 83  
 Data Source: NTS base 1:50 000,  
 Stephens Lake Shoreline-Quickbird@Digitalglobe, 2006

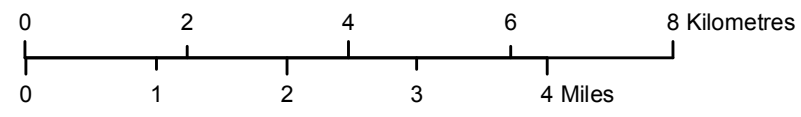
## Habitat-Based Index Gillnetting Sites 2002-2003

### Stephens Lake Area



n = 27 fish in 2001/2002  
 n = 24 fish in 2002/2003  
 n = 8 fish in 2003/2004

Legend	
X	1-Dec 01, 19-Jan-02, 24-Mar-02
○	25-Nov-02, 18-Jan-03, 3-Apr-03
●	24-Nov-03, 7-Feb-04

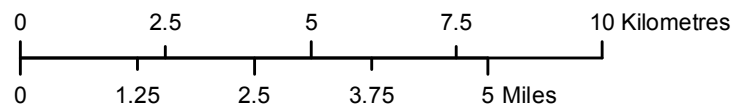
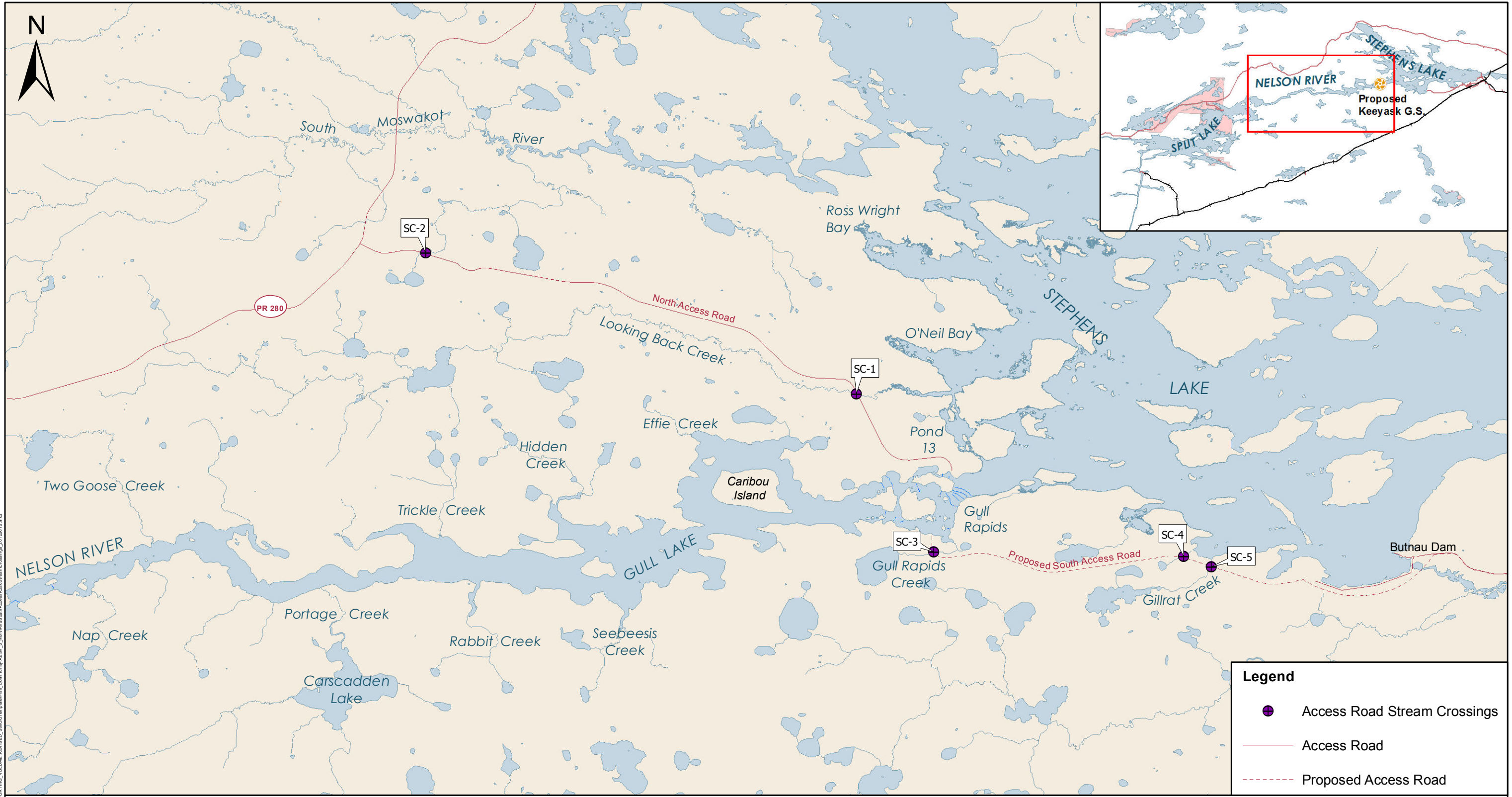


Projection: UTM Zone 15, NAD 83  
 Data Source: NTS base 1:50 000  
 Stephens Lake Shoreline-Quickbird @ Digitalglobe, 2006

## Walleye Radio Tracking - Overwintering Stephens Lake Area

File Location: G:\EEB\Keeyask\Subarea\_Maps\SUPPORTING\_VOLUME\REVISED\_SRS\OTR\Map\Fish\_Community\AESV\_5\_WalleyeRadioTrackingOverwinteringReport.mxd\_20120425.mxd








Projection: UTM Zone 15, NAD 83  
 Data Source: NTS base 1:50 000  
 Stephens Lake Shoreline - Quickbird@Digitalglobe, 2006  
 Nelson River Shoreline modelled by Manitoba Hydro

## North and South Access Road Stream Crossings

**Legend**

-  Access Road Stream Crossings
-  Access Road
-  Proposed Access Road

File Location: C:\ESRI\Keeyask\Subarea\_Maps\Supporting\_Volumes\REVISED\_SupportingMap\Community\AESV\_5\_NorthAndSouthAccessRoadStreamCrossings\_20120610.mxd