

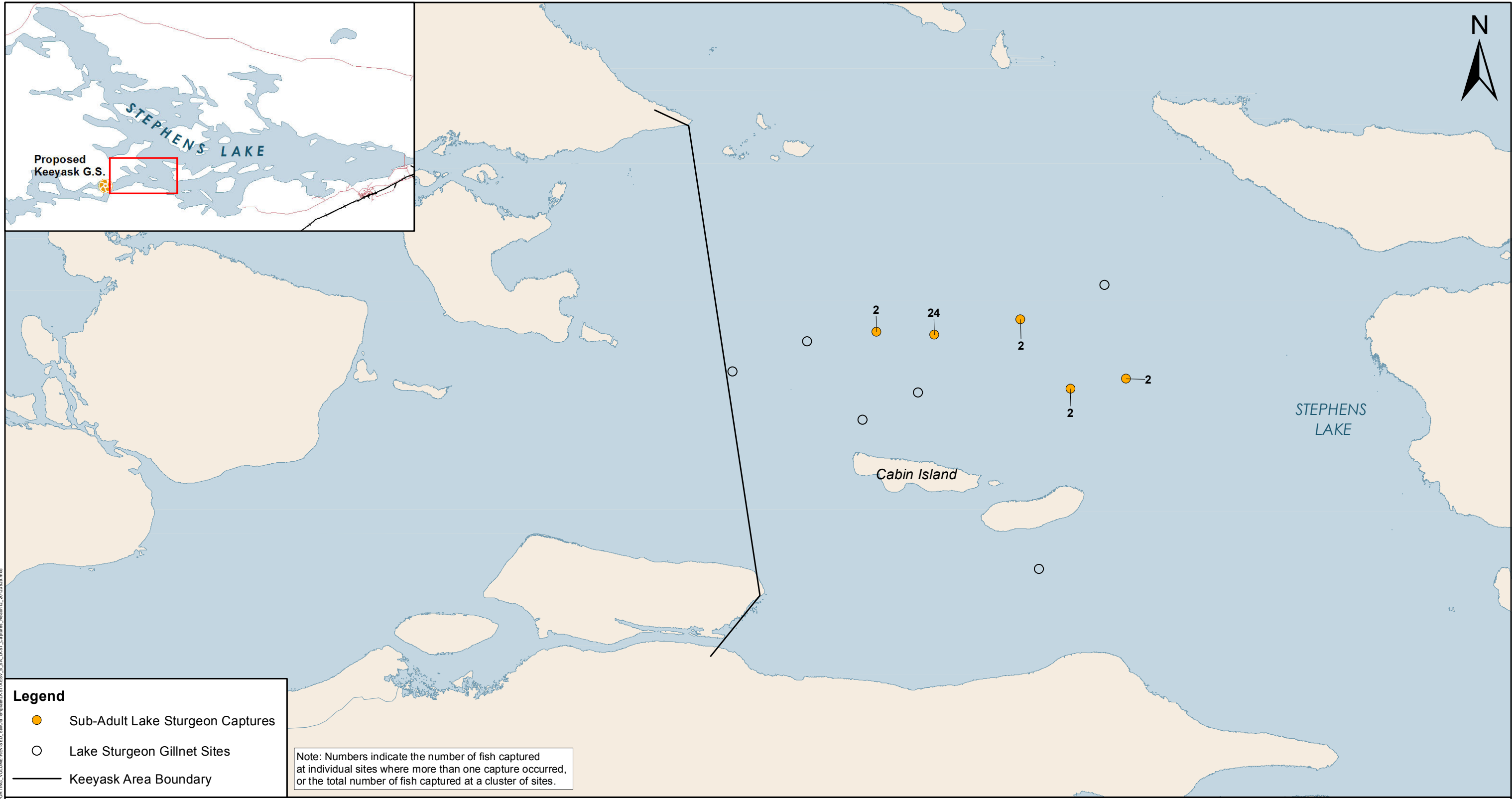


# Keeyask Generation Project Environmental Impact Statement

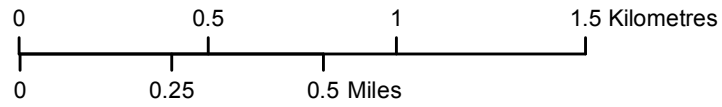
## Supporting Volume Aquatic Environment



June 2012



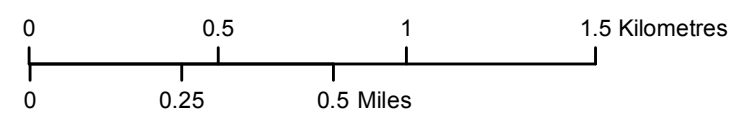
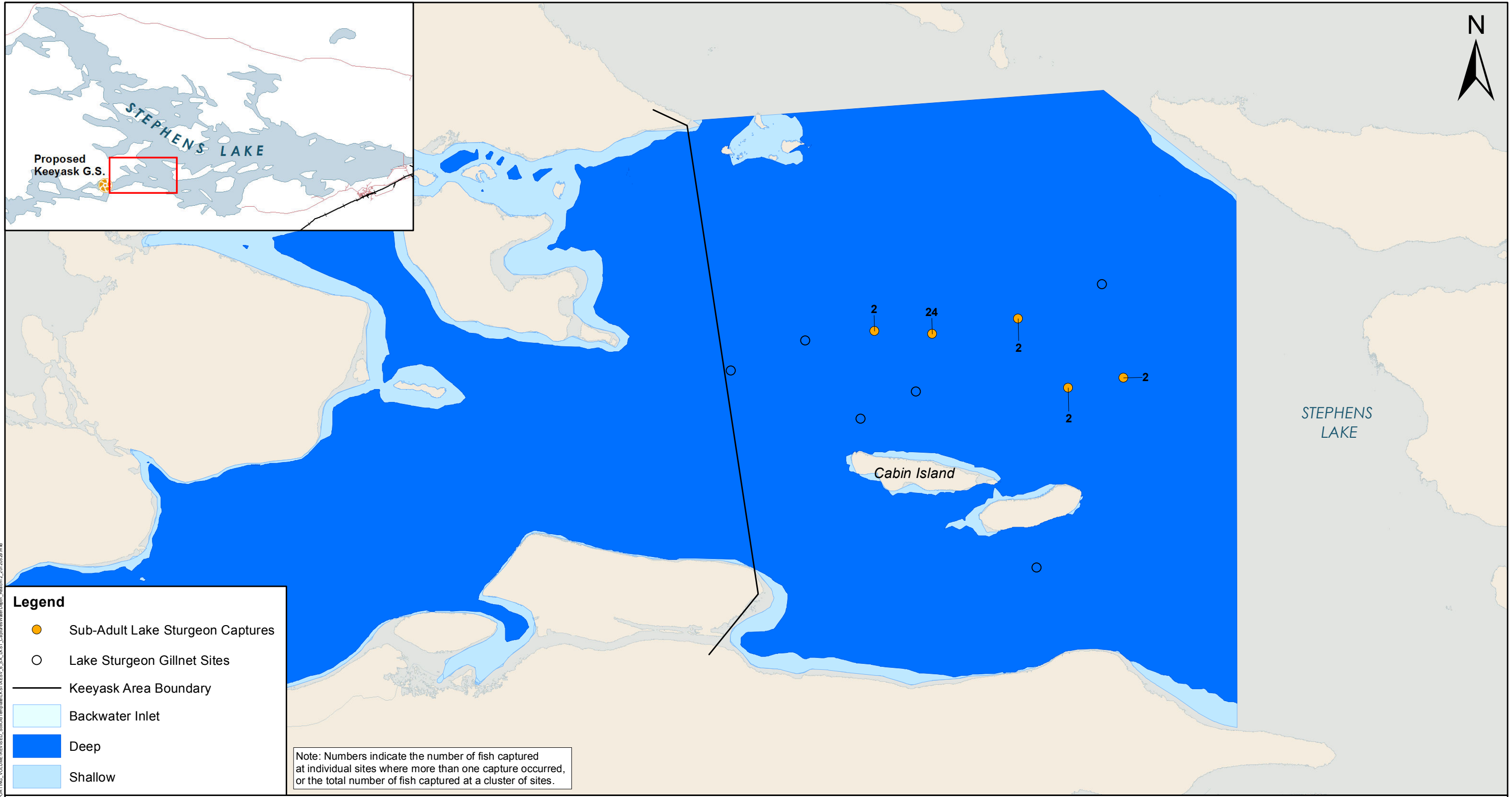
R:\Location\GIS\Keyask\Subadult\_StockingSupporting\_Volume\REVISED\_SupportingMap\KTA\REV\_6\_SA\_LKST\_Captures\_Reach12\_20120509.mxd



Projection: UTM Zone 15, NAD 83  
 Data Source: NTS base 1:50 000  
 Stephens Lake Shoreline - Quickbird@Digitalglobe, 2006  
 Nelson River Shoreline modelled by Manitoba Hydro.

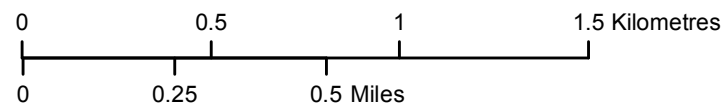
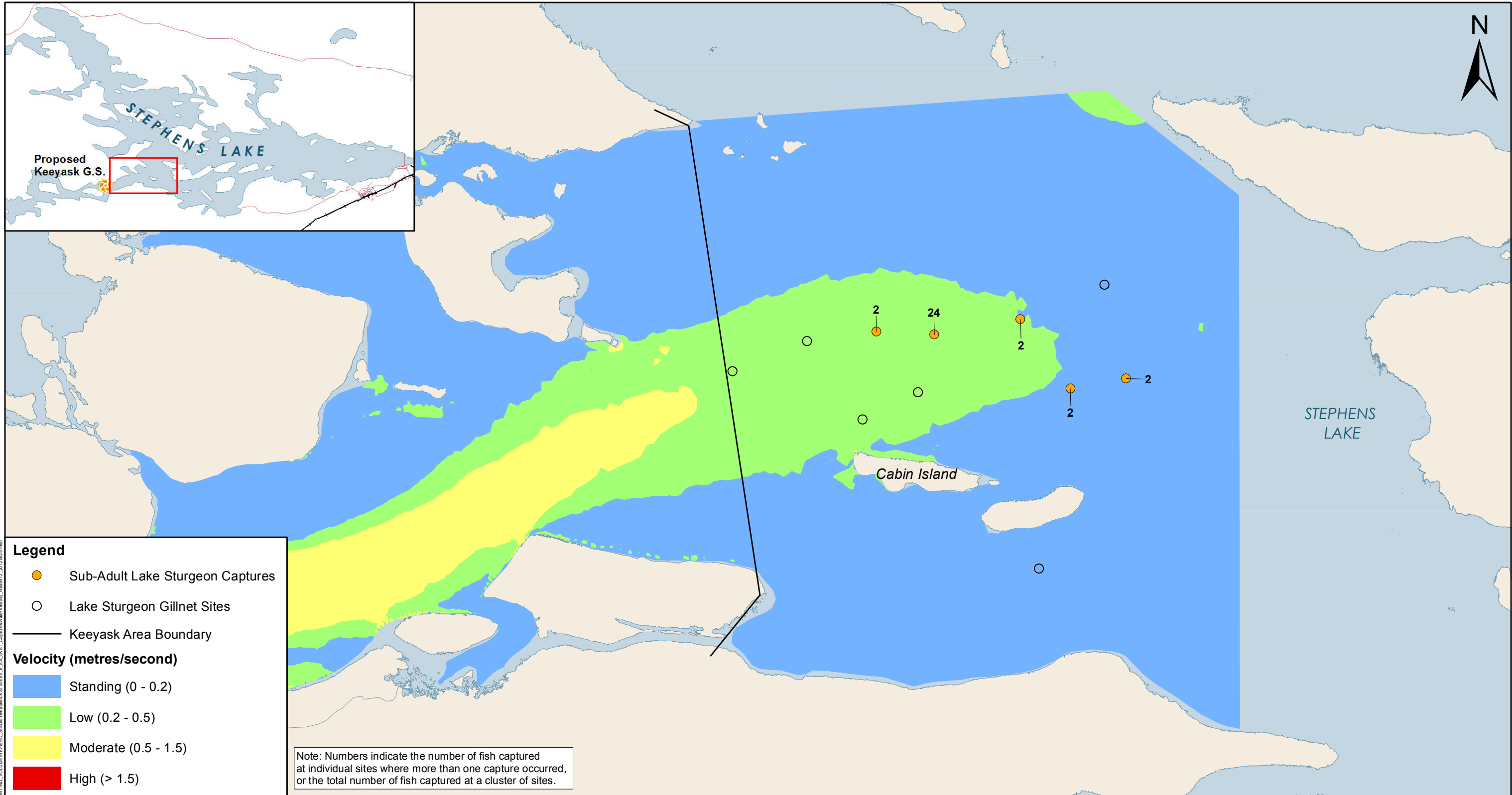
## Sub-Adult Lake Sturgeon Captures

Reach 12



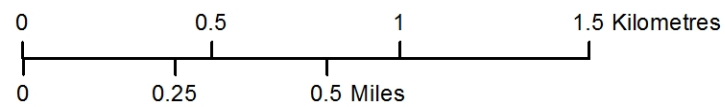
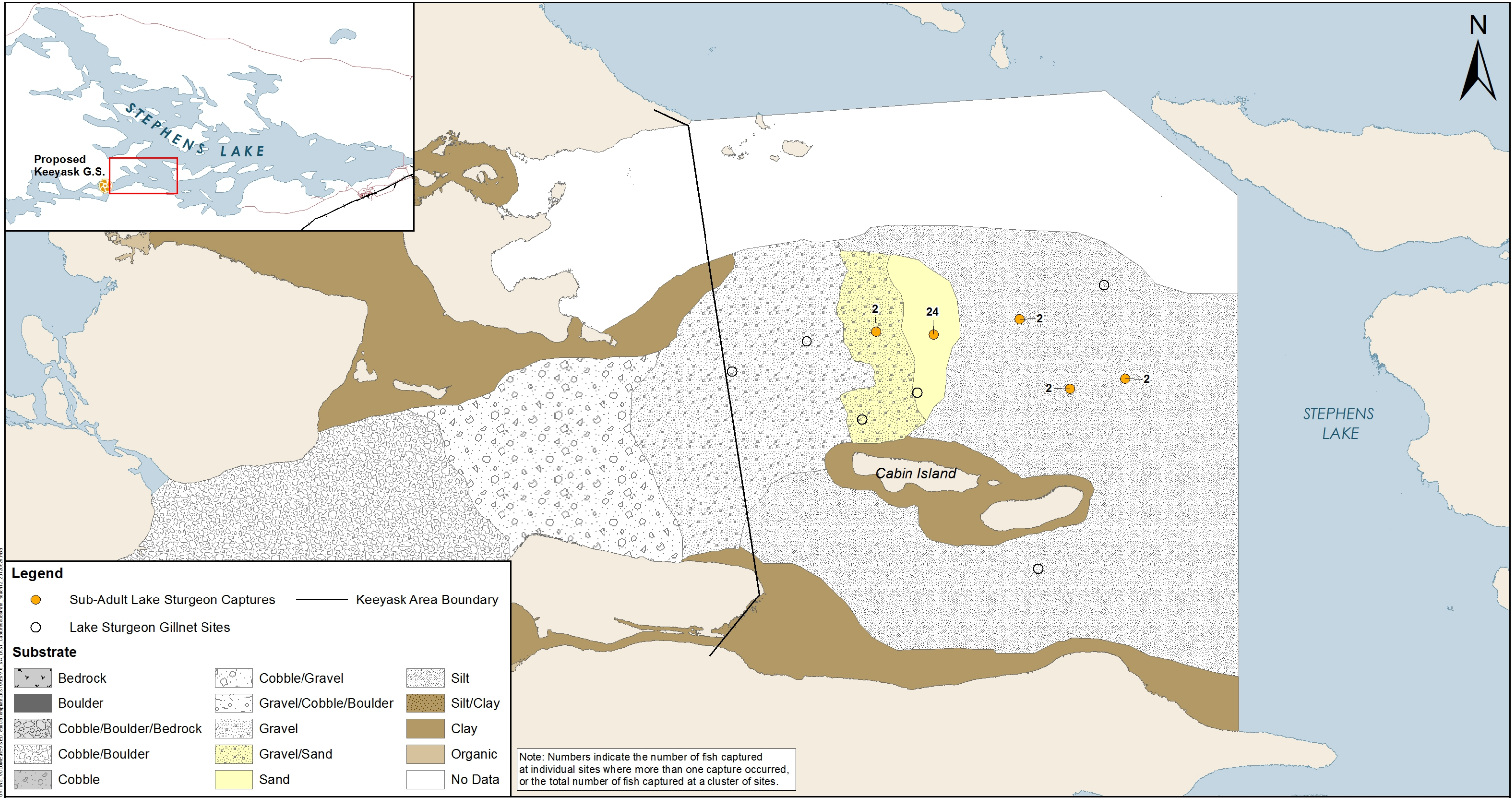
Projection: UTM Zone 15, NAD 83  
 Data Source: NTS base 1:50 000  
 Stephens Lake Shoreline - Quickbird@Digitalglobe, 2006  
 Nelson River Shoreline modelled by Manitoba Hydro.

## Sub-Adult Lake Sturgeon Captures Water Depth Reach 12



Projection: UTM Zone 15, NAD 83  
 Data Source: NTS base 1:50 000  
 Stephens Lake Shoreline - Quickbird@Digitalglobe, 2006  
 Nelson River Shoreline modelled by Manitoba Hydro.

## Sub-Adult Lake Sturgeon Captures Water Velocity Reach 12



Projection: UTM Zone 15, NAD 83  
 Data Source: NTS base 1:50 000  
 Stephens Lake Shoreline - Quickbird@Digitalglobe, 2006  
 Nelson River Shoreline modelled by Manitoba Hydro.

## Sub-Adult Lake Sturgeon Captures - Substrate

### Reach 12