

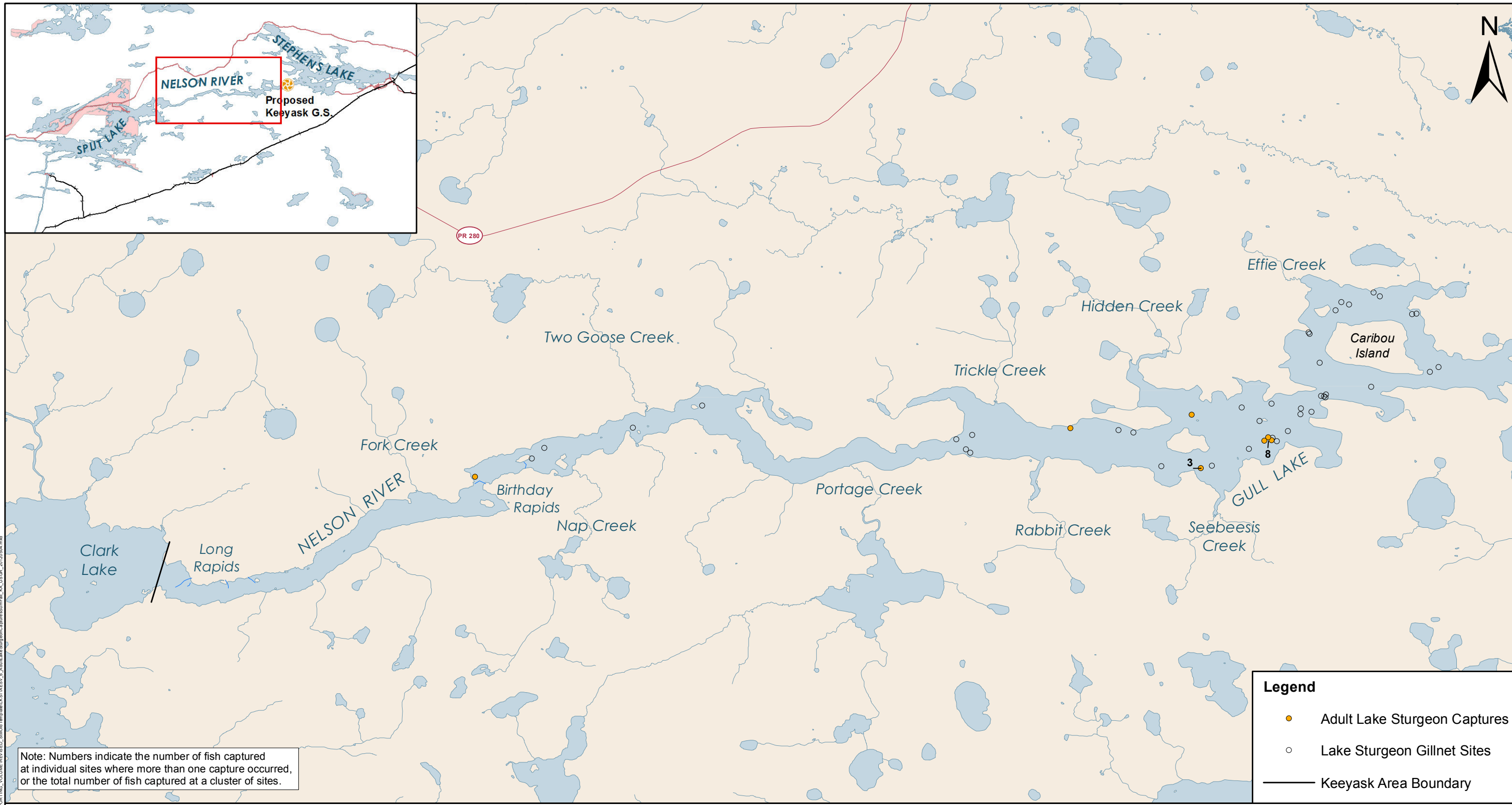


Keeyask Generation Project Environmental Impact Statement

Supporting Volume Aquatic Environment



June 2012



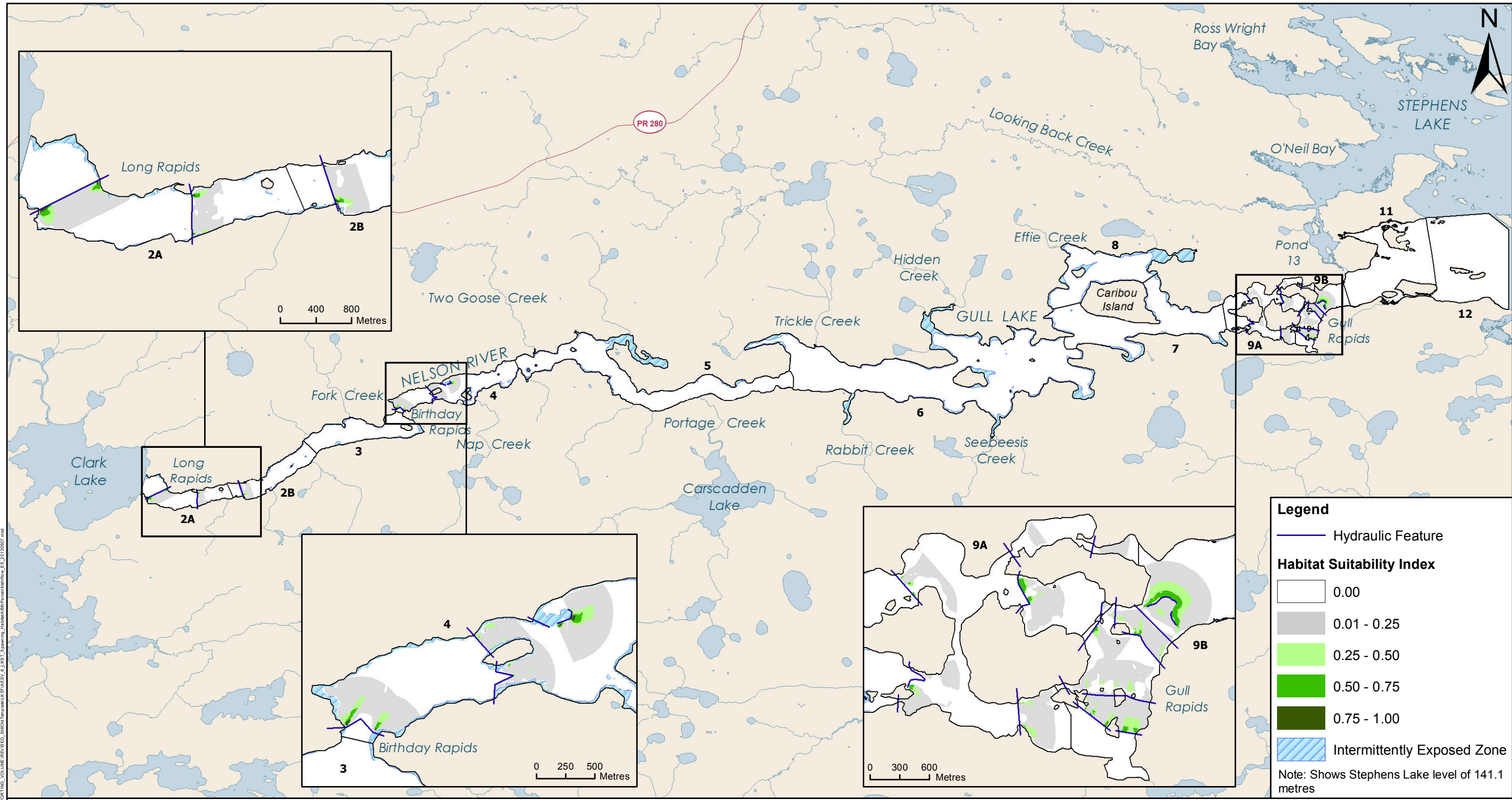
File Location: G:\EEB\Keyeyask\Sub-projects\SUPPORTING_DOCUMENTATION\KTA\REV_6_A\Map_6-6_Supporting_Capture_Summary_Map_KA_USR_201204.mxd



Projection: UTM Zone 15, NAD 83
 Data Source: NTS base 1:50 000,
 Nelson River Shoreline modelled by Manitoba Hydro

Adult Lake Sturgeon Captures - Summer/Fall

Keyeyask Area - Upstream of Gull Rapids



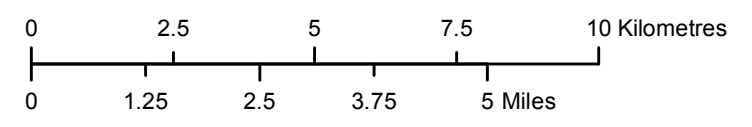
Legend

- Hydraulic Feature

Habitat Suitability Index

- 0.00
- 0.01 - 0.25
- 0.25 - 0.50
- 0.50 - 0.75
- 0.75 - 1.00
- Intermittently Exposed Zone

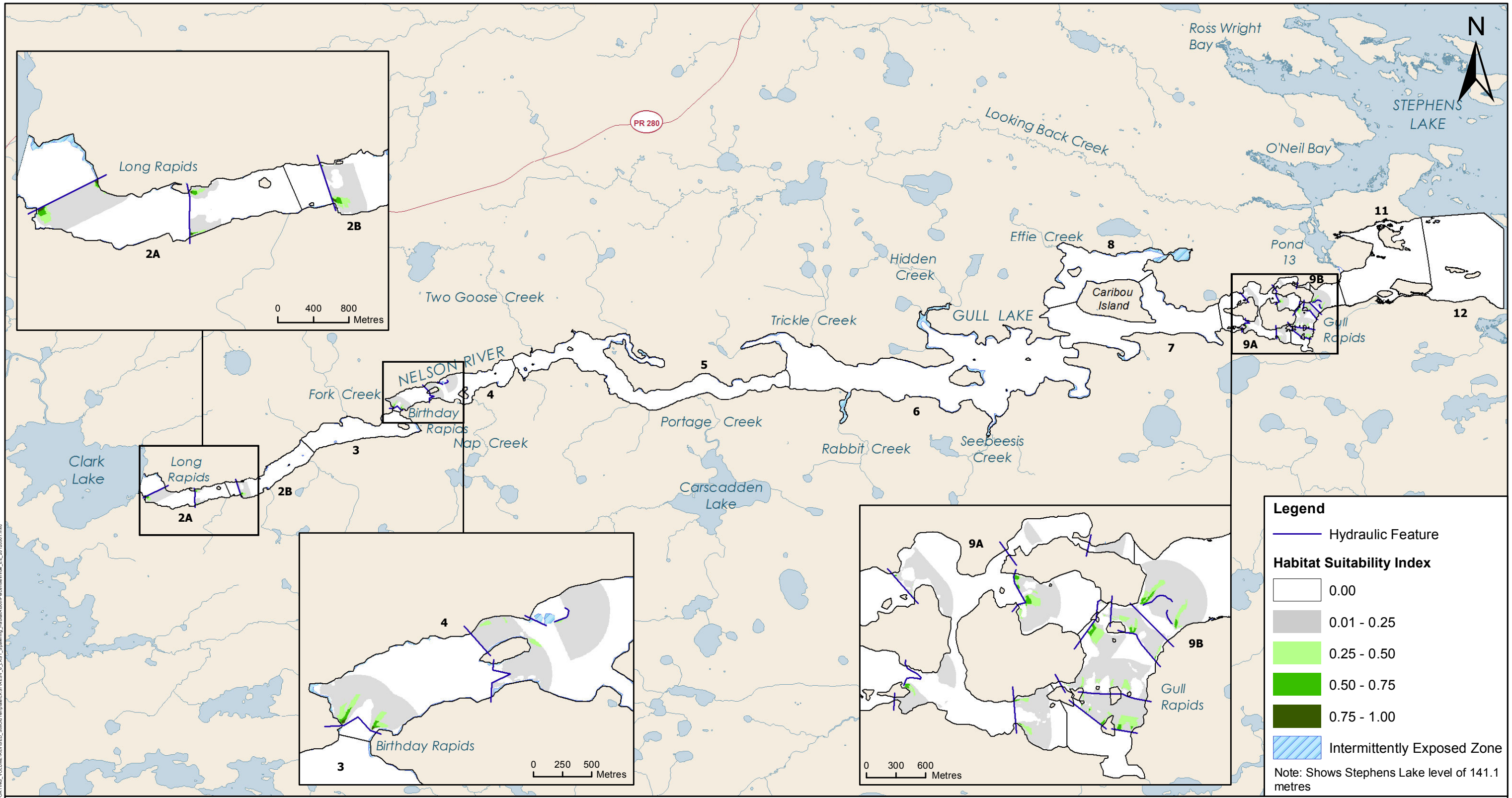
Note: Shows Stephens Lake level of 141.1 metres



Projection: UTM Zone 15, NAD 83
 Data Source: NTS base 1:50 000
 Stephens Lake Shoreline - Quickbird@Digitalglobe, 2006
 Nelson River Shoreline modelled by Manitoba Hydro

Lake Sturgeon Spawning Habitat at 5th Percentile Inflow
 Existing Environment - Five Variable Habitat Suitability Index Model

File Location: C:\EEB\Keeyask\Subarea_Maps\SUPPORTING_VOLUMES\REVISED_SAR\SAR\Map\MapView_6_Lake_Spawning_Habitat\MapView_6_EE_20120607.mxd



Legend

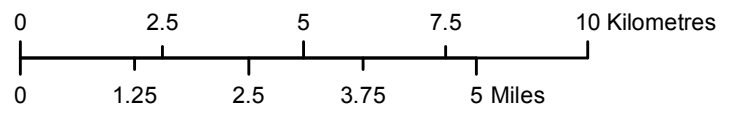
- Hydraulic Feature

Habitat Suitability Index

- 0.00
- 0.01 - 0.25
- 0.25 - 0.50
- 0.50 - 0.75
- 0.75 - 1.00

Intermittently Exposed Zone

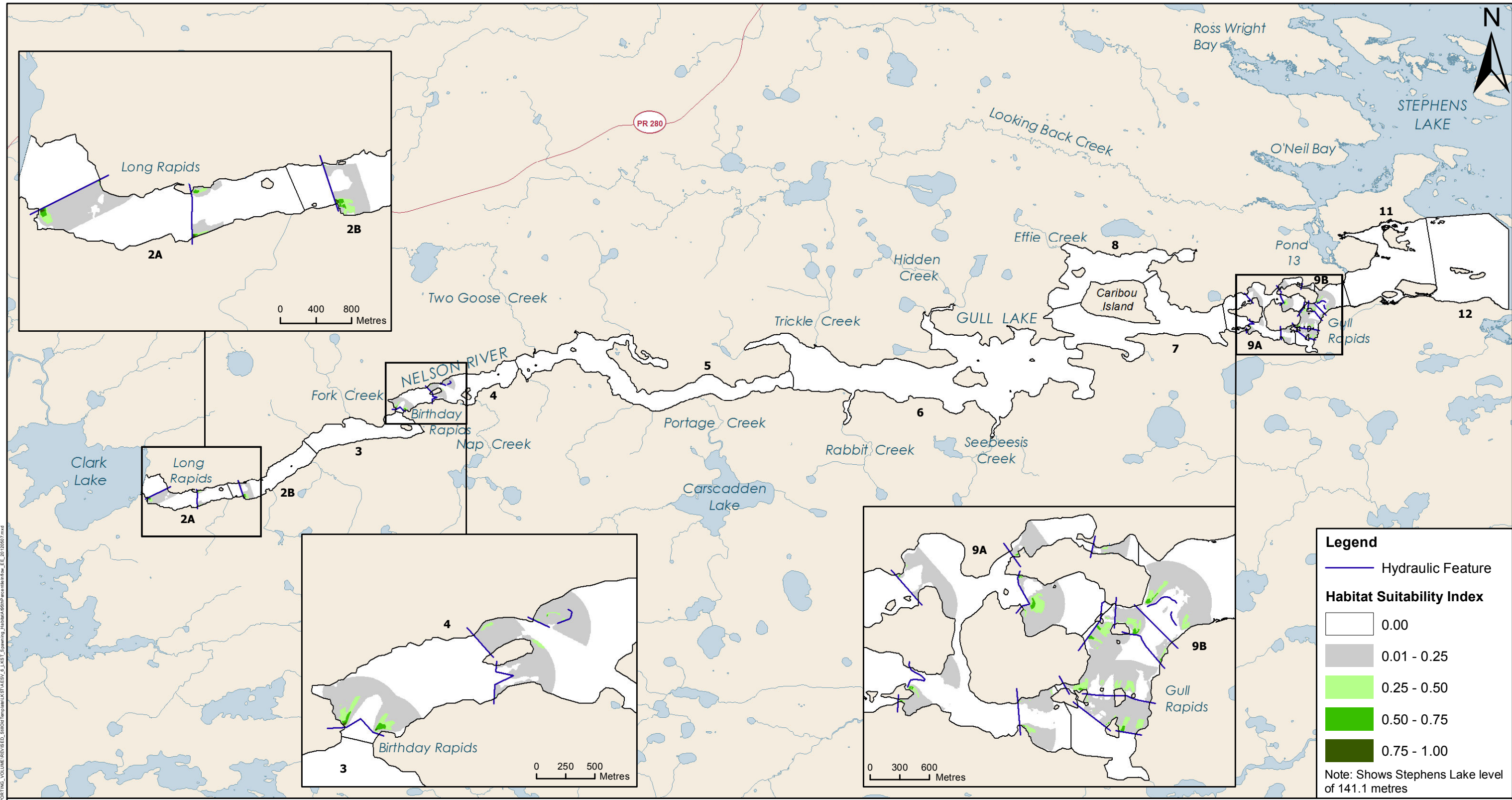
Note: Shows Stephens Lake level of 141.1 metres



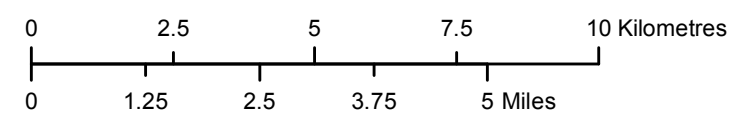
Projection: UTM Zone 15, NAD 83
 Data Source: NTS base 1:50 000
 Stephens Lake Shoreline - Quickbird@Digitalglobe, 2006
 Nelson River Shoreline modelled by Manitoba Hydro

Lake Sturgeon Spawning Habitat at 50th Percentile Inflow
 Existing Environment - Five Variable Habitat Suitability Index Model

RM Location: C:\ES\Keeeyask\Subarea_Maps\Supporting_Volume\REVISED_Support\Map\MapView_6_Lake_Spawning_Habitat_Suitability_Index_EE_20100807.mxd



File Location: C:\ES\Keeeyask\Subarea_Maps\SUPPORTING_VOLUME\REVISED_SUPPORT_MATERIALS\VIEW_6_LKST_Spawning_Habitat\95th_Percentile_Inflow_EE_20100907.mxd



Projection: UTM Zone 15, NAD 83
 Data Source: NTS base 1:50 000
 Stephens Lake Shoreline - Quickbird@Digitalglobe, 2006
 Nelson River Shoreline modelled by Manitoba Hydro

Lake Sturgeon Spawning Habitat
at 95th Percentile Inflow
 Existing Environment - Five Variable Habitat Suitability Index Model

Legend

- Hydraulic Feature

Habitat Suitability Index

- 0.00
- 0.01 - 0.25
- 0.25 - 0.50
- 0.50 - 0.75
- 0.75 - 1.00

Note: Shows Stephens Lake level of 141.1 metres



Projection: UTM Zone 15, NAD 83
 Data Source: NTS base 1:50 000,
 Nelson River Shoreline modelled by Manitoba Hydro

Young-of-the-Year Lake Sturgeon Captures

Keyask Area - Upstream of Gull Rapids