

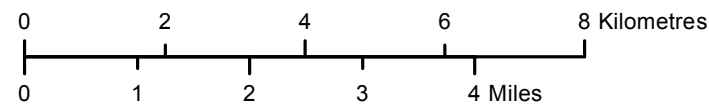


Keeyask Generation Project Environmental Impact Statement

Supporting Volume Aquatic Environment



June 2012

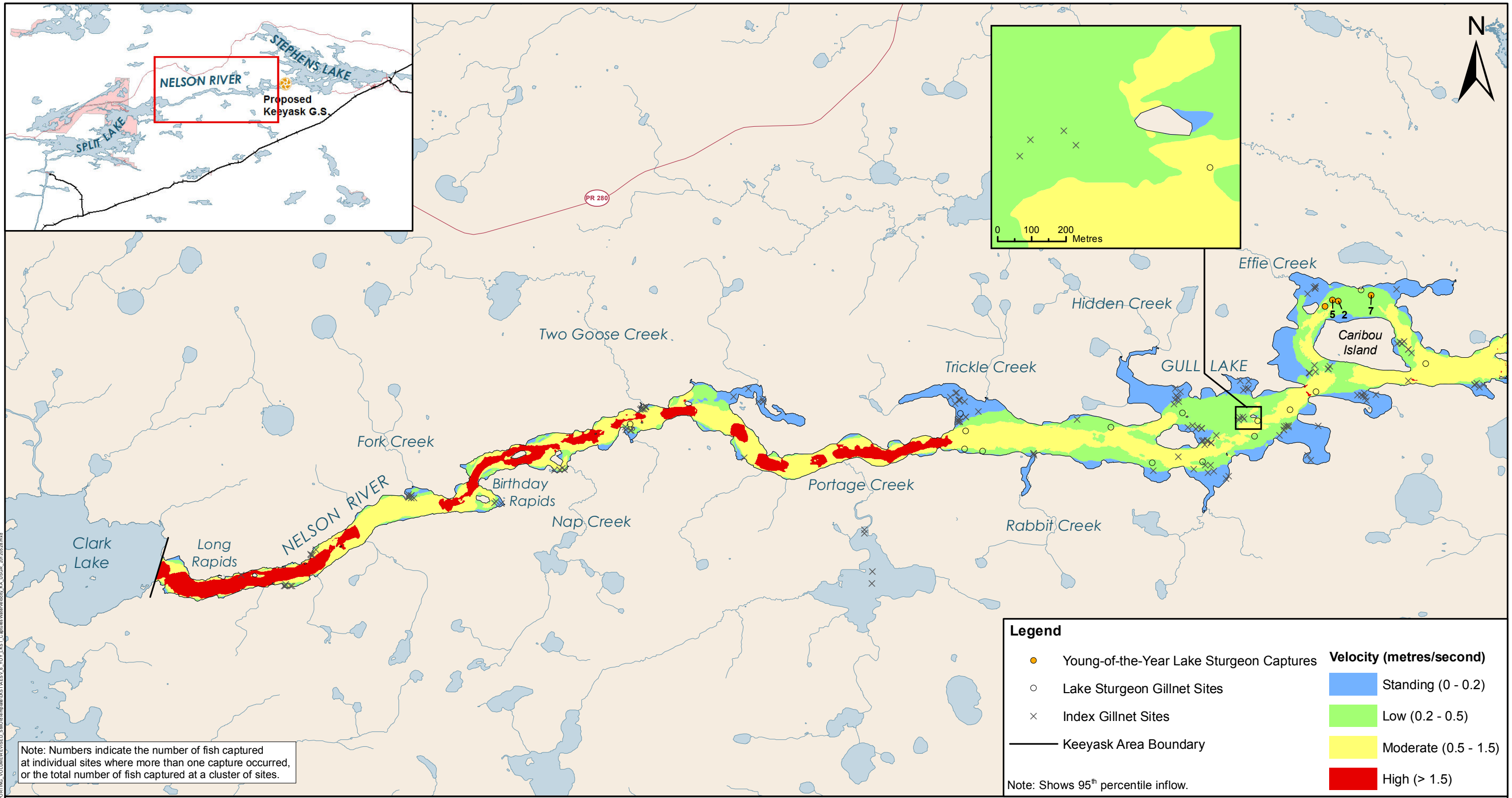


Projection: UTM Zone 15, NAD 83
 Data Source: NTS base 1:50 000,
 Nelson River Shoreline modelled by Manitoba Hydro

Young-of-the-Year Lake Sturgeon Captures

Water Depth

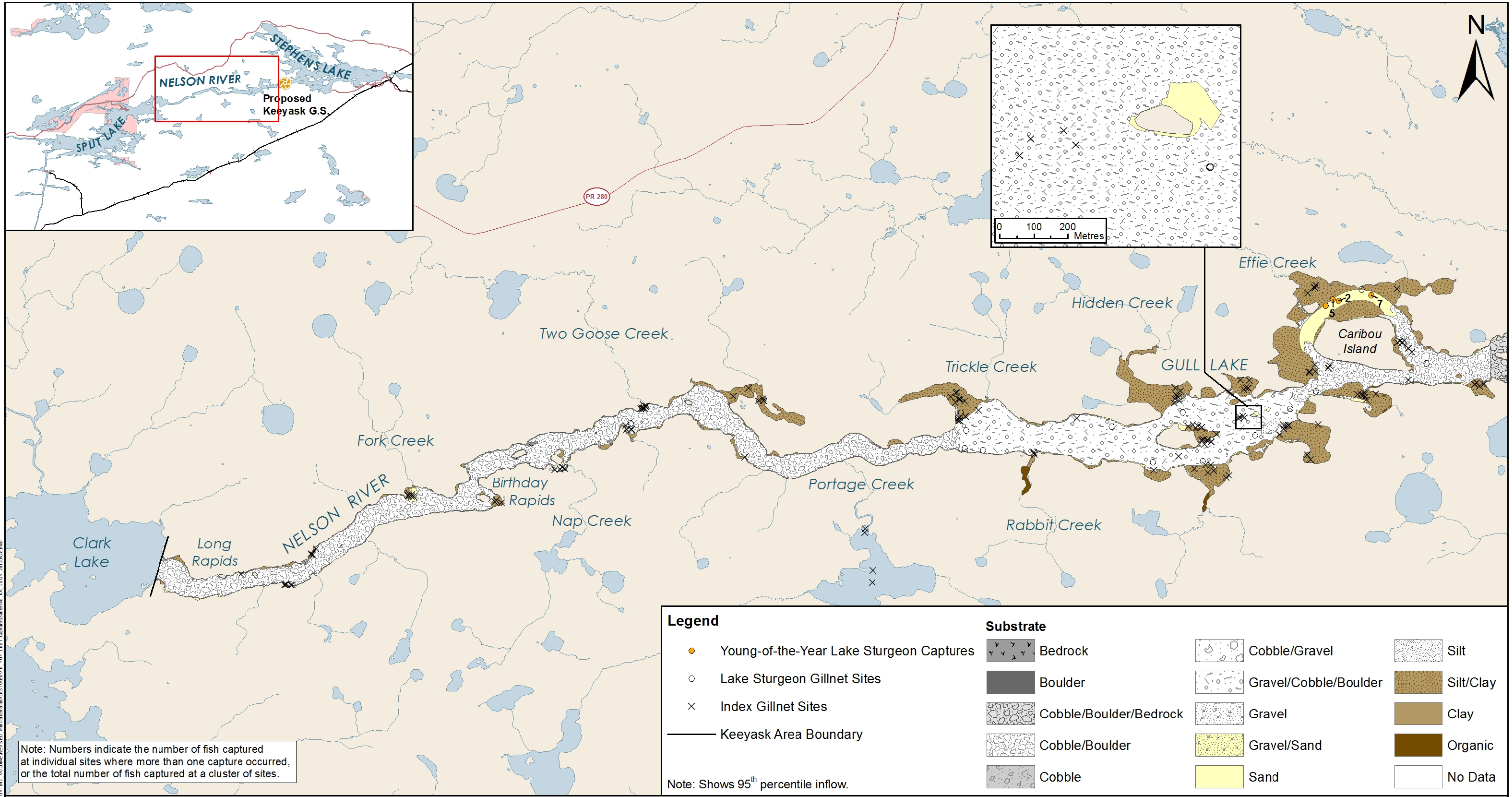
Keeyask Area - Upstream of Gull Rapids



Projection: UTM Zone 15, NAD 83
 Data Source: NTS base 1:50 000,
 Nelson River Shoreline modelled by Manitoba Hydro

Young-of-the-Year Lake Sturgeon Captures Water Velocity

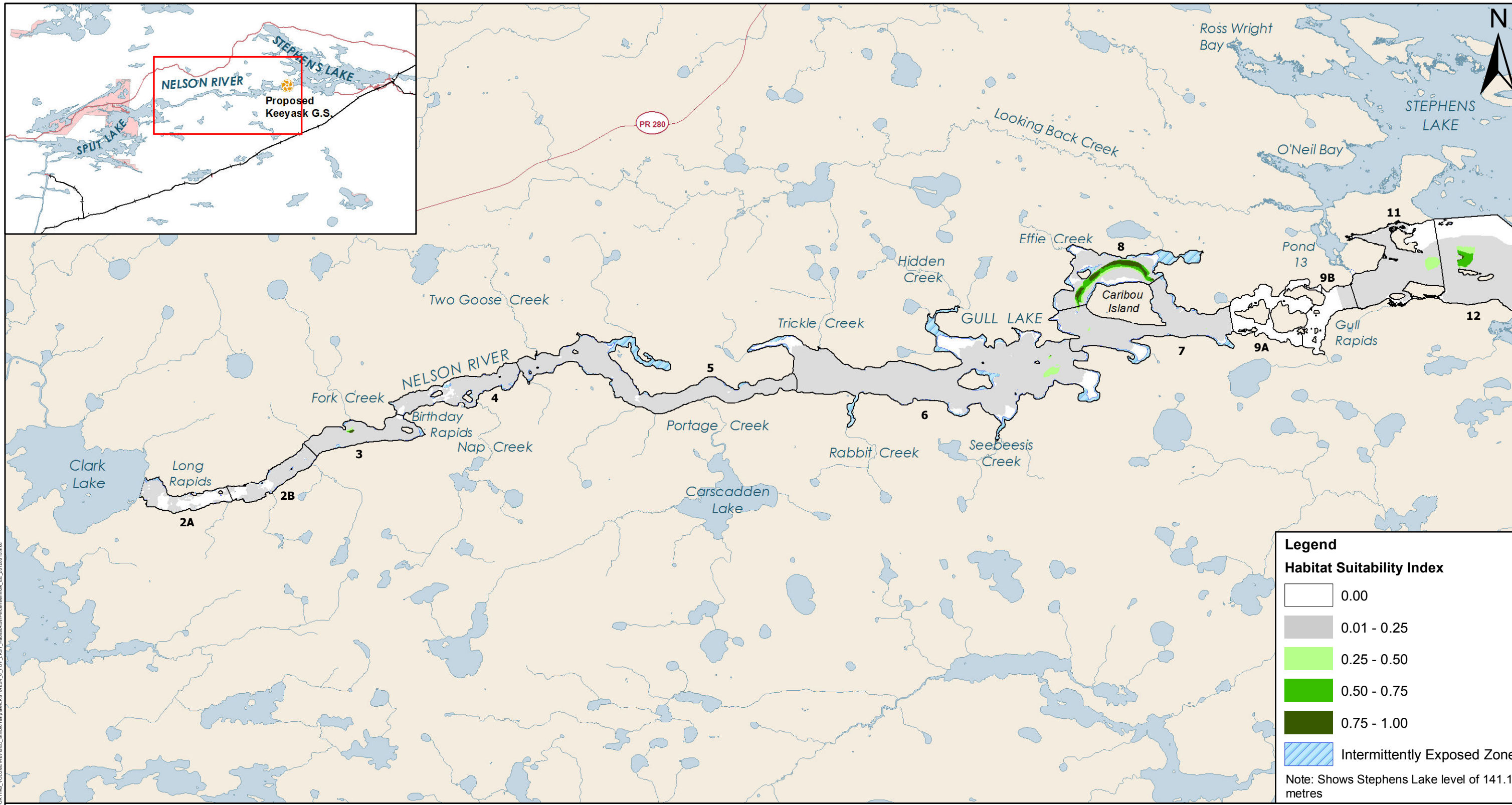
Keyask Area - Upstream of Gull Rapids



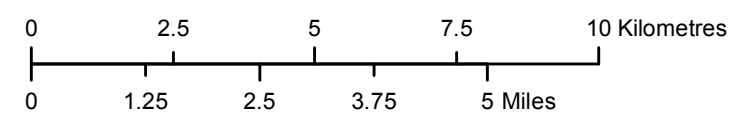
Projection: UTM Zone 15, NAD 83
 Data Source: NTS base 1:50 000,
 Nelson River Shoreline modelled by Manitoba Hydro

Young-of-the-Year Lake Sturgeon Captures Substrate

Keeyask Area - Upstream of Gull Rapids



File Location: G:\EEB\Keyyask\Subarea_Maps\SUPPORTING_VOLUMES\REVISED_SUPPORTING_VOLUMES\STAGEVIEW_6_YOY_LAST_HabitatHSI_Presentation_EE_2020615.mxd



Projection: UTM Zone 15, NAD 83
 Data Source: NTS base 1:50 000
 Stephens Lake Shoreline - Quickbird@Digitalglobe, 2006
 Nelson River Shoreline modelled by Manitoba Hydro

Young-of-the-Year Lake Sturgeon Habitat at 5th Percentile Inflow

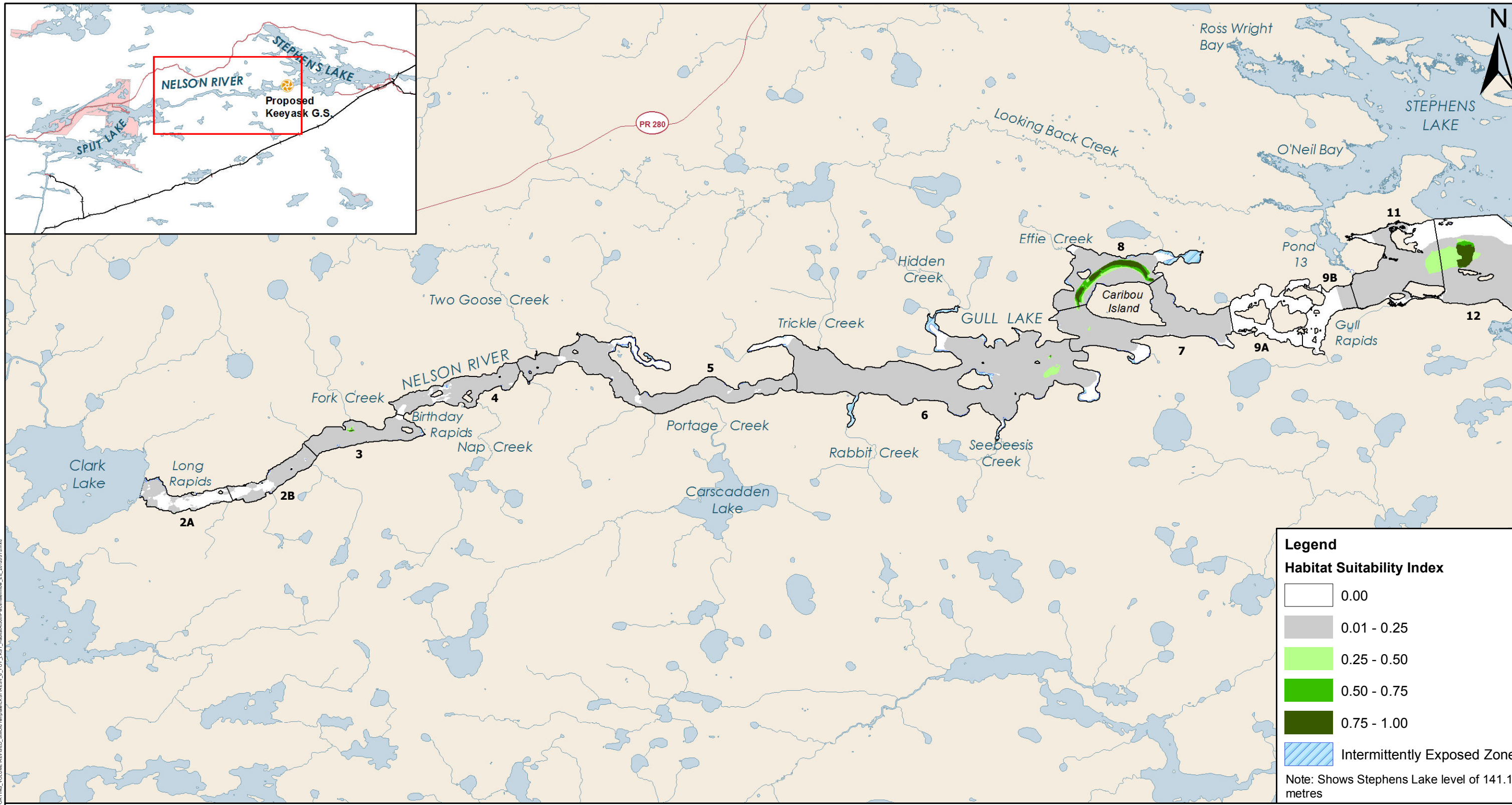
Existing Environment - Habitat Suitability Index Model

Legend

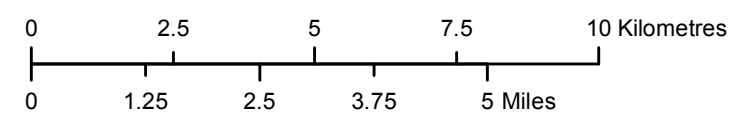
Habitat Suitability Index

| | |
|--|-----------------------------|
| | 0.00 |
| | 0.01 - 0.25 |
| | 0.25 - 0.50 |
| | 0.50 - 0.75 |
| | 0.75 - 1.00 |
| | Intermittently Exposed Zone |

Note: Shows Stephens Lake level of 141.1 metres



File Location: G:\EEB\Keyyask\Subarea_Maps\SUPPORTING_VOLUMES\REVISED_Support\Map\KST\VIEW_6_YOY_LAST_Habitat\50pct\inflow_EE_20100515.mxd



Projection: UTM Zone 15, NAD 83
 Data Source: NTS base 1:50 000
 Stephens Lake Shoreline - Quickbird@Digitalglobe, 2006
 Nelson River Shoreline modelled by Manitoba Hydro

Young-of-the-Year Lake Sturgeon Habitat at 50th Percentile Inflow

Existing Environment - Habitat Suitability Index Model