

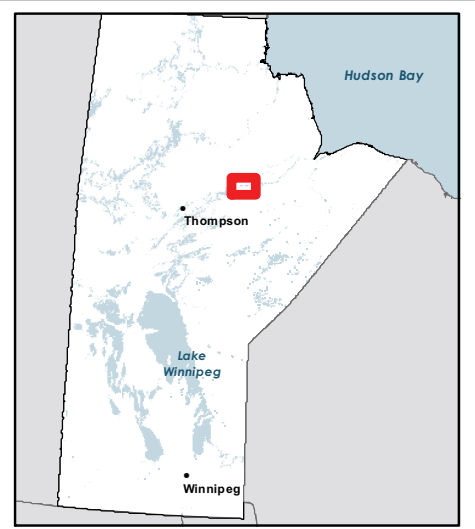
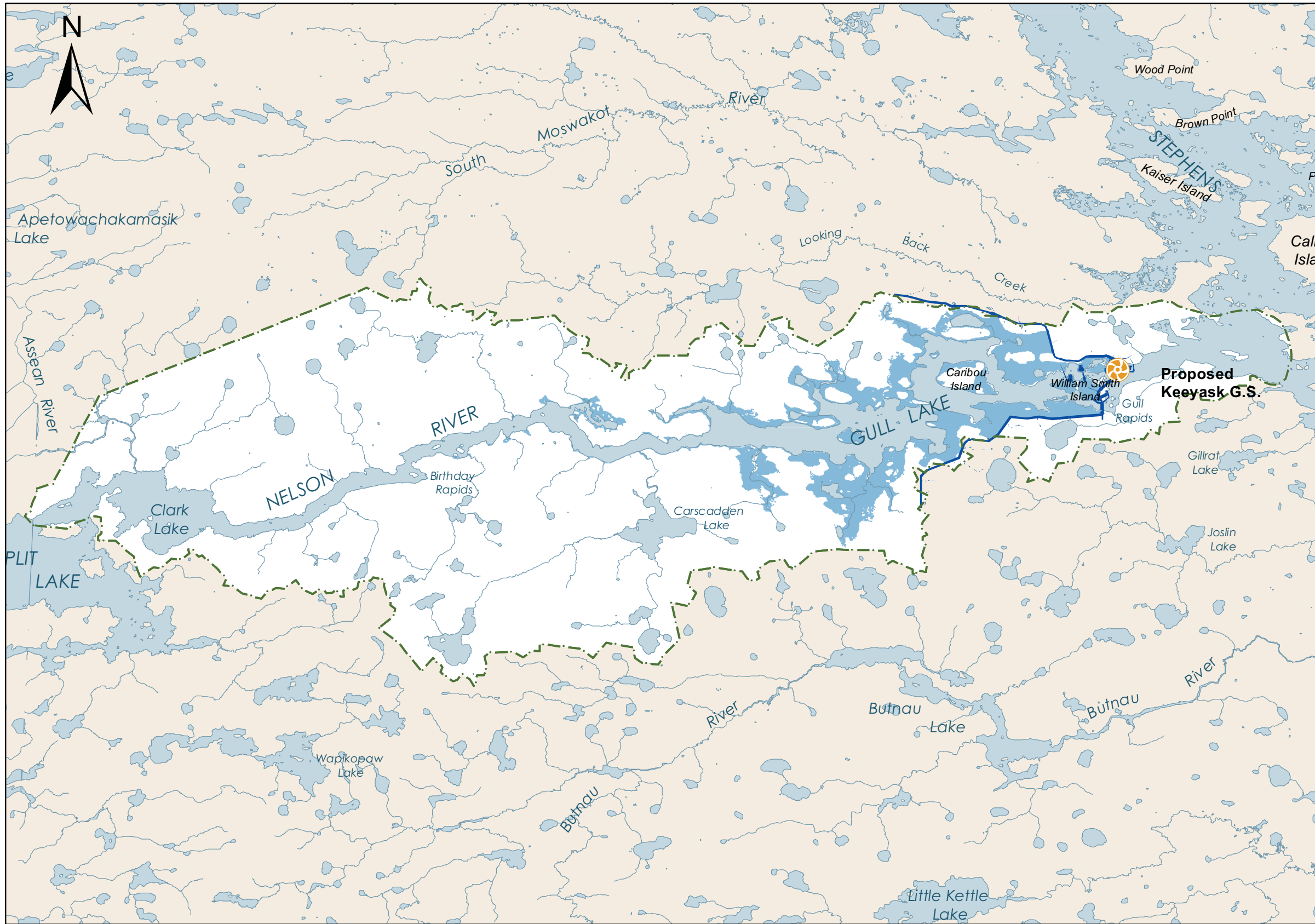


Keeyask Generation Project Environmental Impact Statement

Supporting Volume Physical Environment

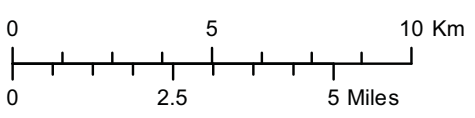


June 2012



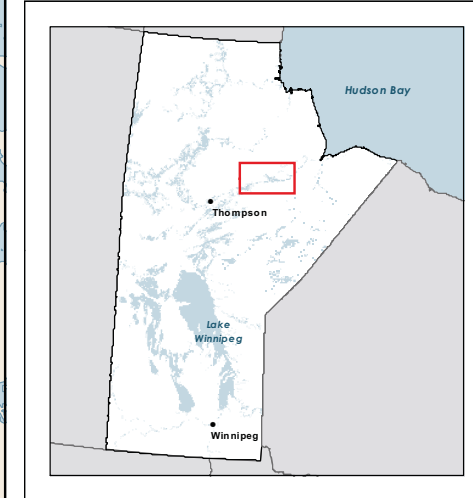
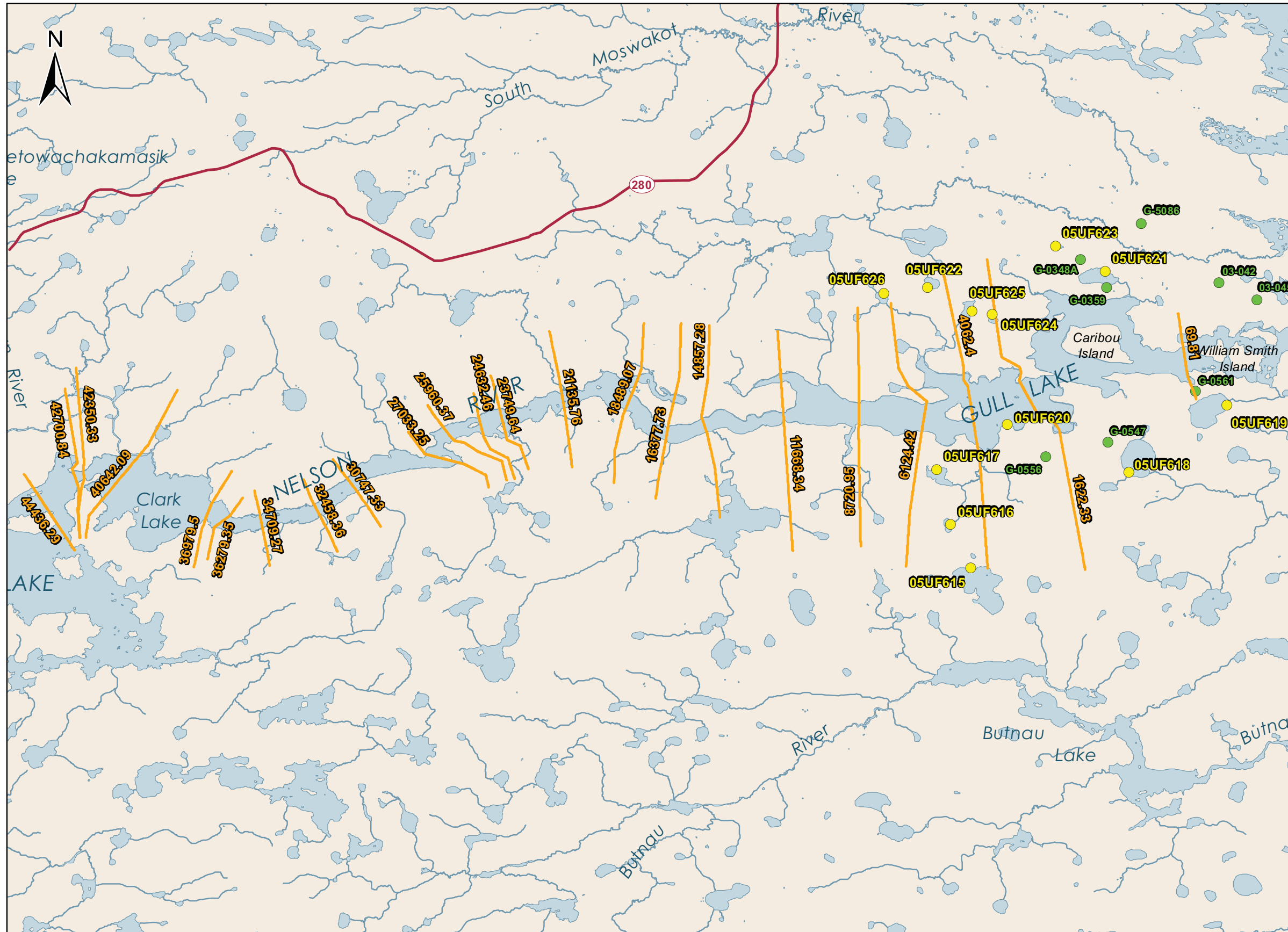
- Legend**
- Keyask Groundwater Study Area
 - Structure Site Layout
 - Area of Impoundment




Projection: NAD 1983 UTM Zone 15
Data Source: Manitoba Hydro, Stantec Consulting Ltd.



Keyask Groundwater Regime
Selected Assessment Area

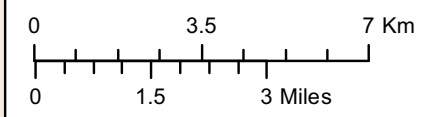




- Legend**
-  Cross Sections selected by Manitoba Hydro to Best Represent Nelson River Water Levels
 -  DIVER locations
 -  HOBO locations

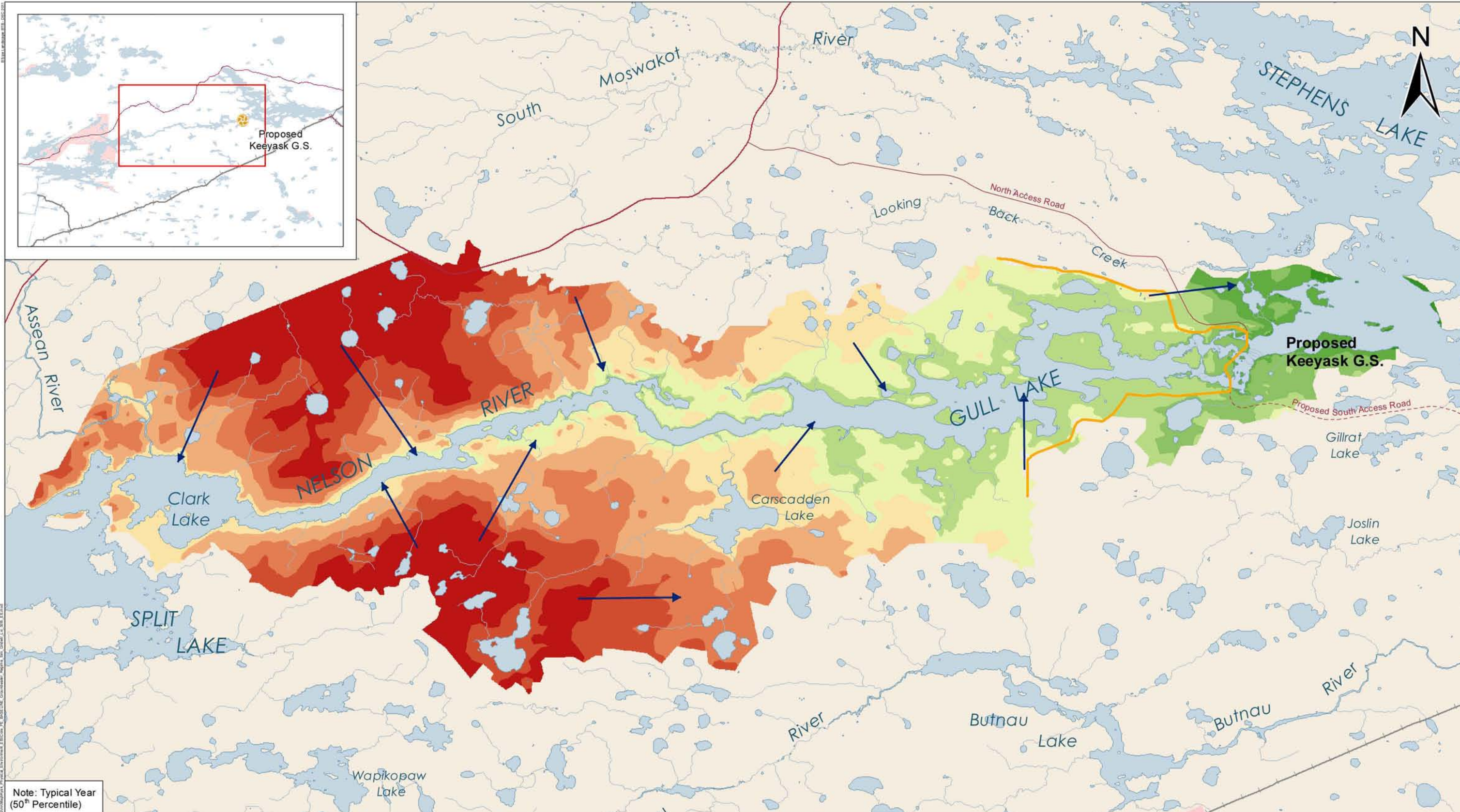
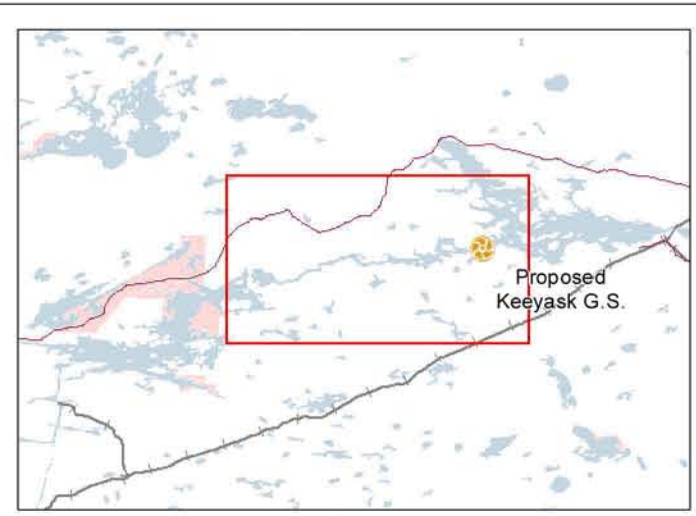
NOTE:
Displayed numbers refer to Manitoba Hydro cross-section designations

Projection: NAD 1983 UTM Zone 15
Data Source: Manitoba Hydro, Stantec Consulting Ltd.



Keyask Groundwater Regime
Data Used in Study Area





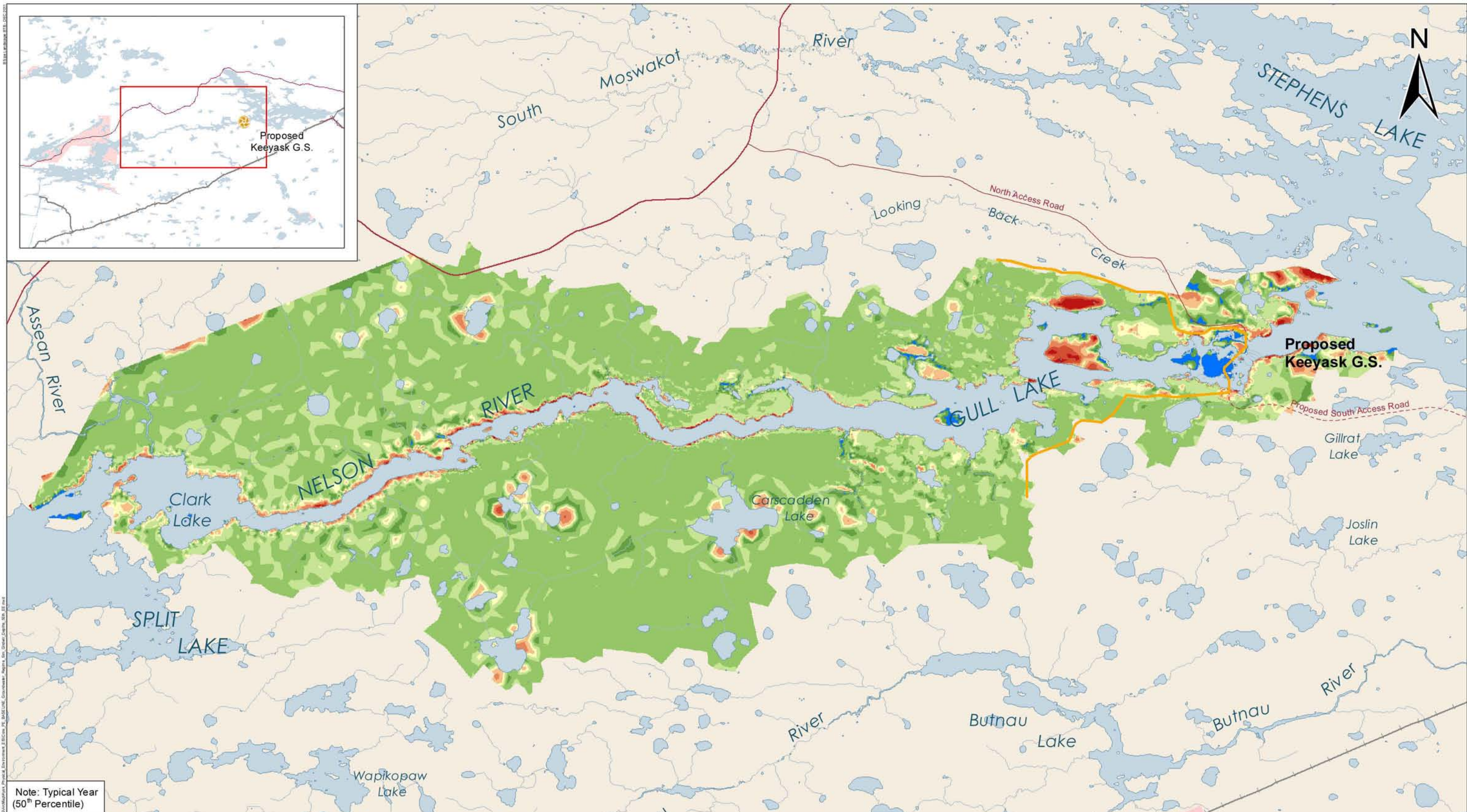
Note: Typical Year (50th Percentile)



DATA SOURCE: Manitoba Hydro, NTS, Stantec Consulting Ltd.			
CREATED BY: Stantec Consulting Ltd.			
COORDINATE SYSTEM: UTM NAD 1983 Z15N		DATE CREATED: 18-JUL-11	REVISION DATE: 15-MAY-12
0 1.5 3 Kilometres		VERSION NO: 1.0	QA/QC: APPROVED
0 1 2 Miles			

Legend		
Groundwater Elevation (m)		
■ < 140	■ 158 - 164	■ 182 - 188
■ 140 - 146	■ 164 - 170	■ > 188
■ 146 - 152	■ 170 - 176	
■ 152 - 158	■ 176 - 182	
Groundwater Flow Direction	Keeyask Principal Structures	Proposed Access Road
Access Road	Waterbody	

Keeyask Groundwater Regime
 Simulated Groundwater Level
 (Existing Environment)



Note: Typical Year (50th Percentile)

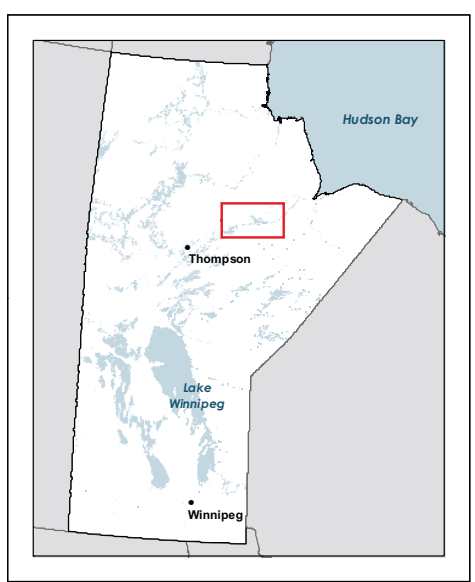


DATA SOURCE: Manitoba Hydro, NTS, Stantec Consulting Ltd.			
CREATED BY: Stantec Consulting Ltd.			
COORDINATE SYSTEM: UTM NAD 1983 Z15N	DATE CREATED: 18-JUL-11	REVISION DATE: 15-MAY-12	
0 1.5 3 Kilometres	VERSION NO: 1.0	QA/QC: APPROVED	
0 1 2 Miles			

Legend

Depth to Groundwater (m)			
Groundwater at Surface	1.0 - 1.5	3.0 - 5.0	Keeyask Principal Structures
0 - 0.5	1.5 - 2.0	5.0 - 7.5	Proposed Access Road
0.5 - 1.0	2.0 - 3.0	> 7.5	Access Road
			Waterbody

Groundwater Regime
Simulated Groundwater Depths
(Existing Environment)

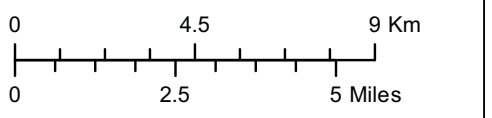


Legend

Depth to Groundwater (m)

Ground Water at Surface	2 - 3
0 - 0.5	3 - 5
0.5 - 1	5 - 7.5
1 - 1.5	> 7.5
1.5 - 2	Lakes, Rivers and Streams

Projection: NAD 1983 UTM Zone 15
Data Source: Manitoba Hydro, Stantec Consulting Ltd.

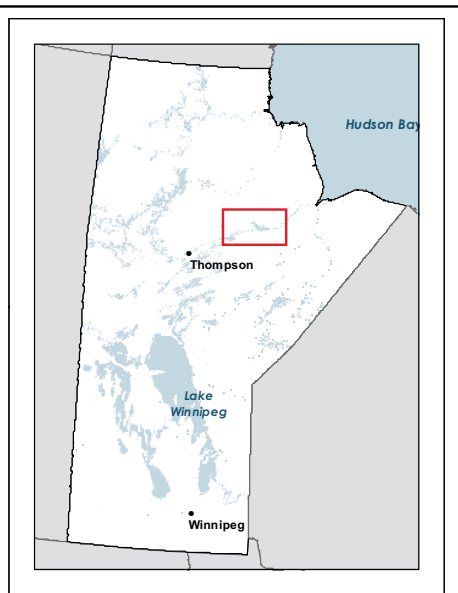
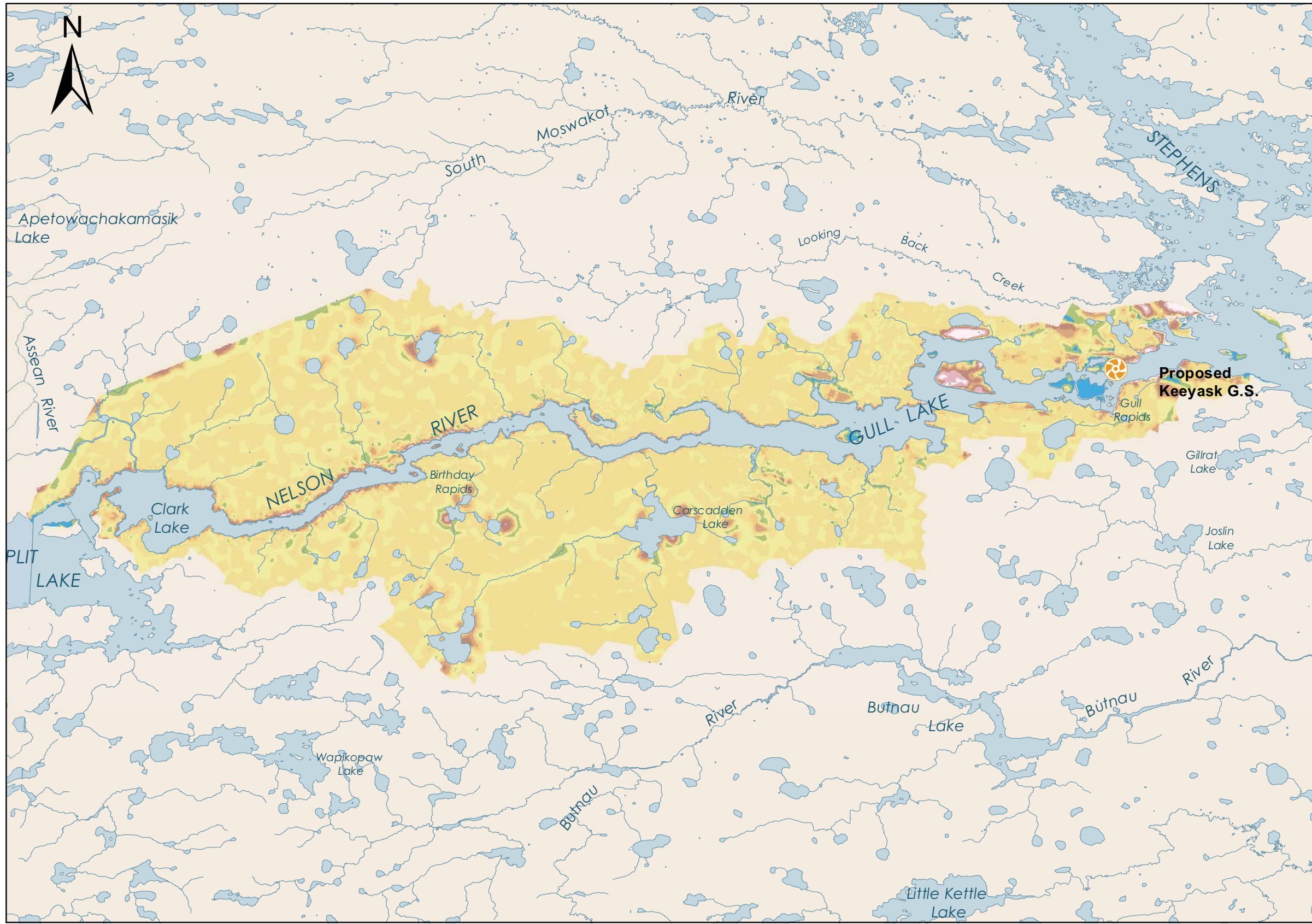


Keeyask Groundwater Regime

Simulated Groundwater Depths (Existing Environment)

Wet Year
 (50th Percentile)



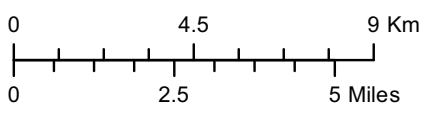


Legend

Depth to Groundwater (m)

Ground Water at Surface	2 - 3
0 - 0.5	3 - 5
0.5 - 1	5 - 7.5
1 - 1.5	> 7.5
1.5 - 2	Lakes, Rivers and Streams

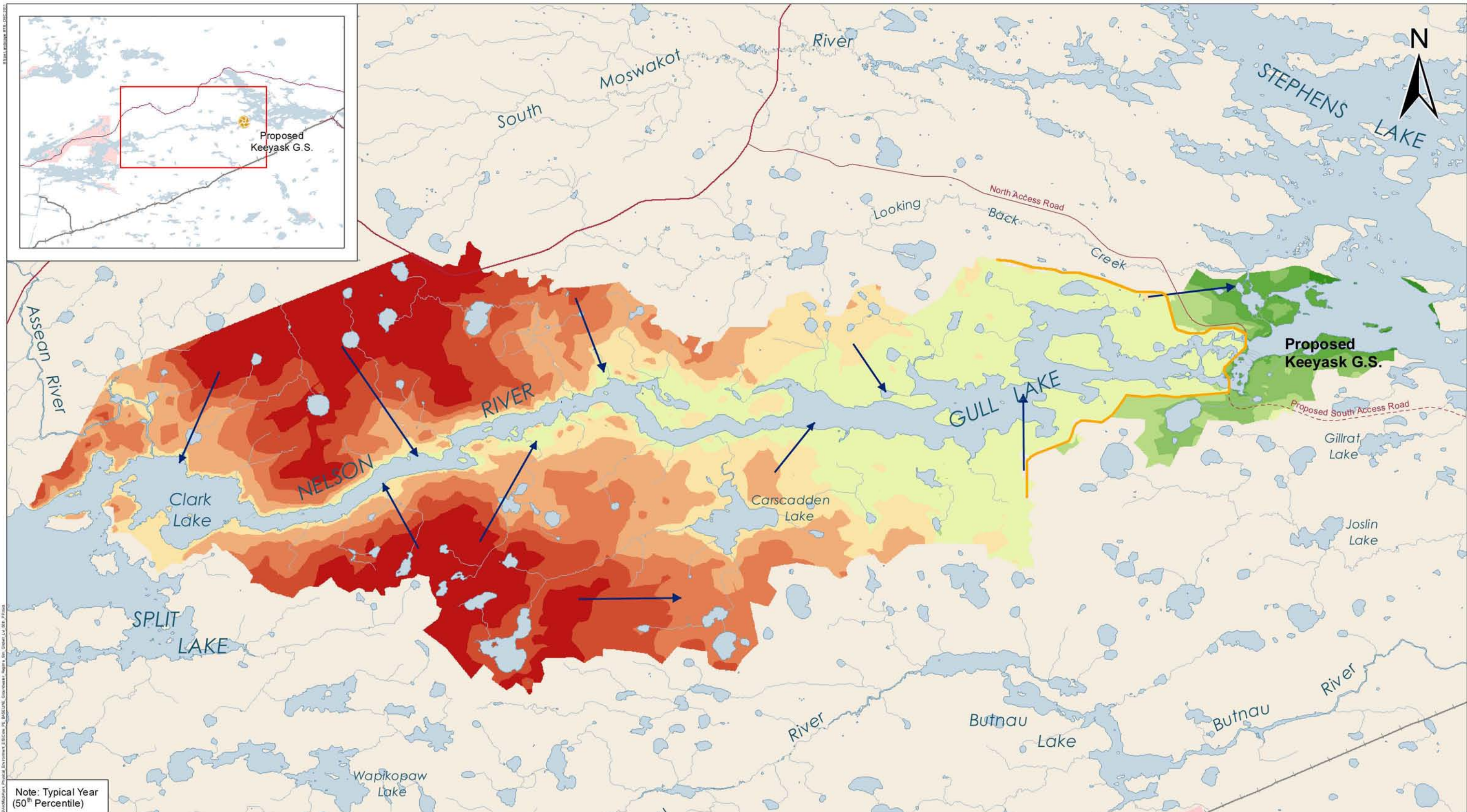
Projection: NAD 1983 UTM Zone 15
Data Source: Manitoba Hydro, Stantec Consulting Ltd.



Keyask Groundwater Regime

Simulated Groundwater Depths (Existing Environment)
 Dry Year (50th Percentile)





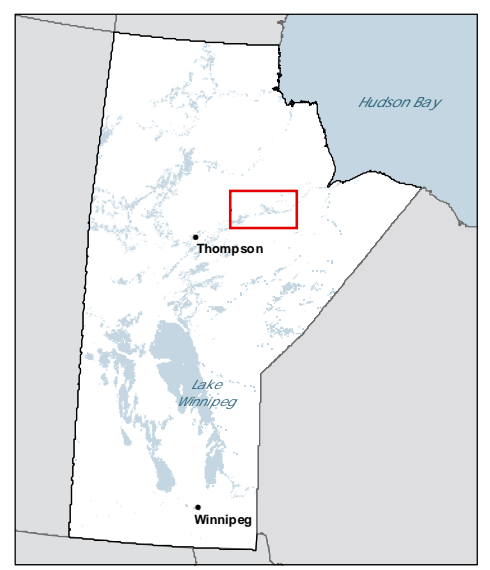
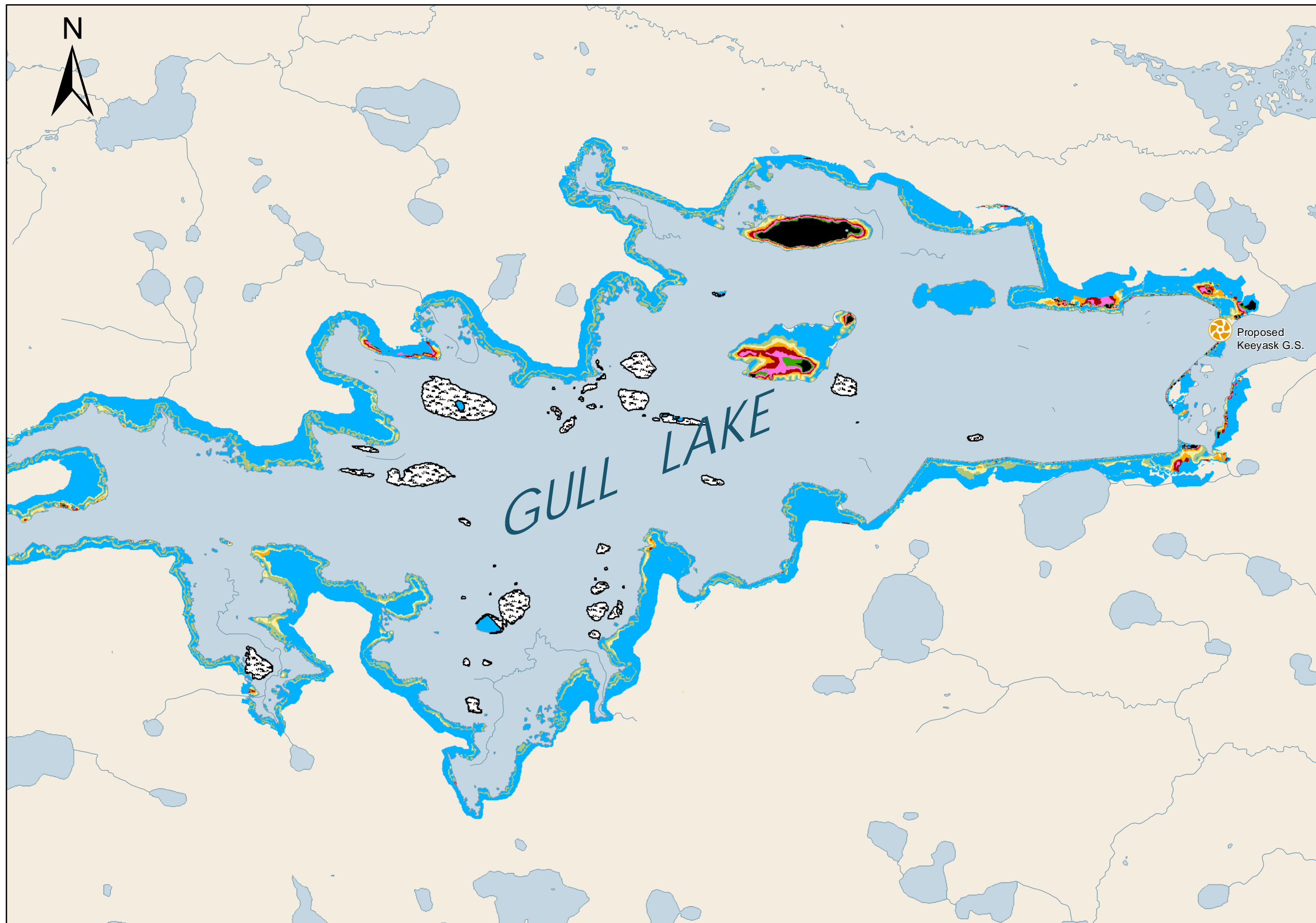
Note: Typical Year (50th Percentile)



DATA SOURCE: Manitoba Hydro, NTS, Stantec Consulting Ltd.			
CREATED BY: Stantec Consulting Ltd.			
COORDINATE SYSTEM: UTM NAD 1983 Z15N		DATE CREATED: 18-JUL-11	REVISION DATE: 15-MAY-12
0 1.5 3 Kilometres		VERSION NO: 1.0	QA/QC: APPROVED
0 1 2 Miles			

Legend			
Groundwater Elevation (m)			
■ < 140	■ 158 - 164	■ 182 - 188	Groundwater Flow Direction
■ 140 - 146	■ 164 - 170	■ > 188	Keeyask Principal Structures
■ 146 - 152	■ 170 - 176		Proposed Access Road
■ 152 - 158	■ 176 - 182		Access Road
			Waterbody

Groundwater Regime
Simulated Groundwater Level
(Post Project)



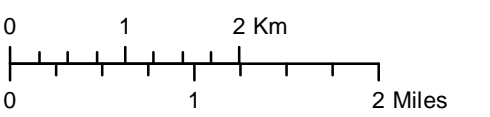
Legend

- Generating Station (Planned)

Depth to Groundwater (m)

Ground Water at Surface	2 - 2.5
0 - 0.5	2.5 - 3
0.5 - 1	> 3
1 - 1.5	Lakes, Rivers and Streams
1.5 - 2	Affected w/o Depth Info

Projection: NAD 1983 UTM Zone 15
Data Source: Manitoba Hydro, Stantec Consulting Ltd.



Keeyask Groundwater Regime
 Simulated Groundwater Depths (Post Project) for Affected Area
 Typical Year (50th Percentile)

