



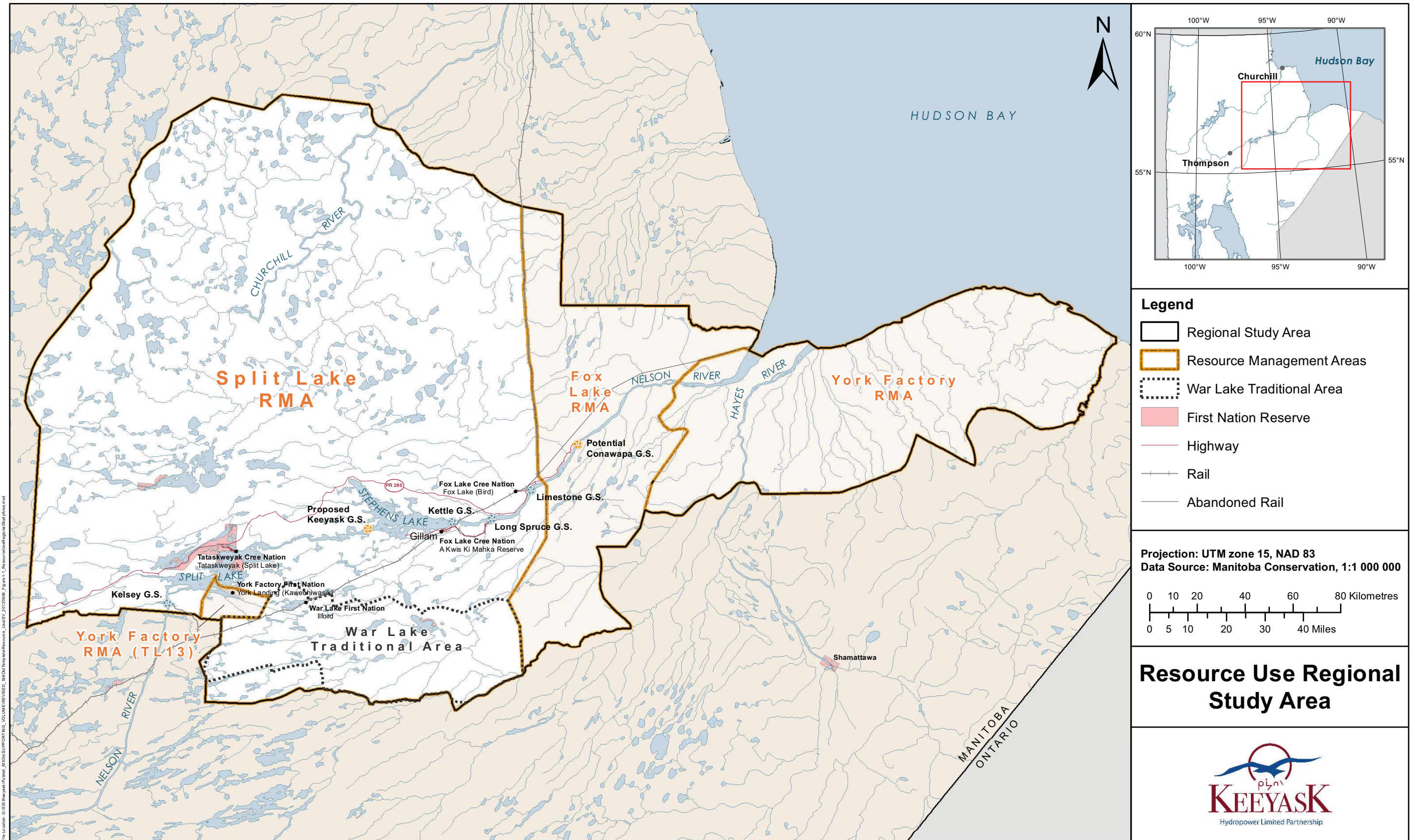
Keeyask Generation Project

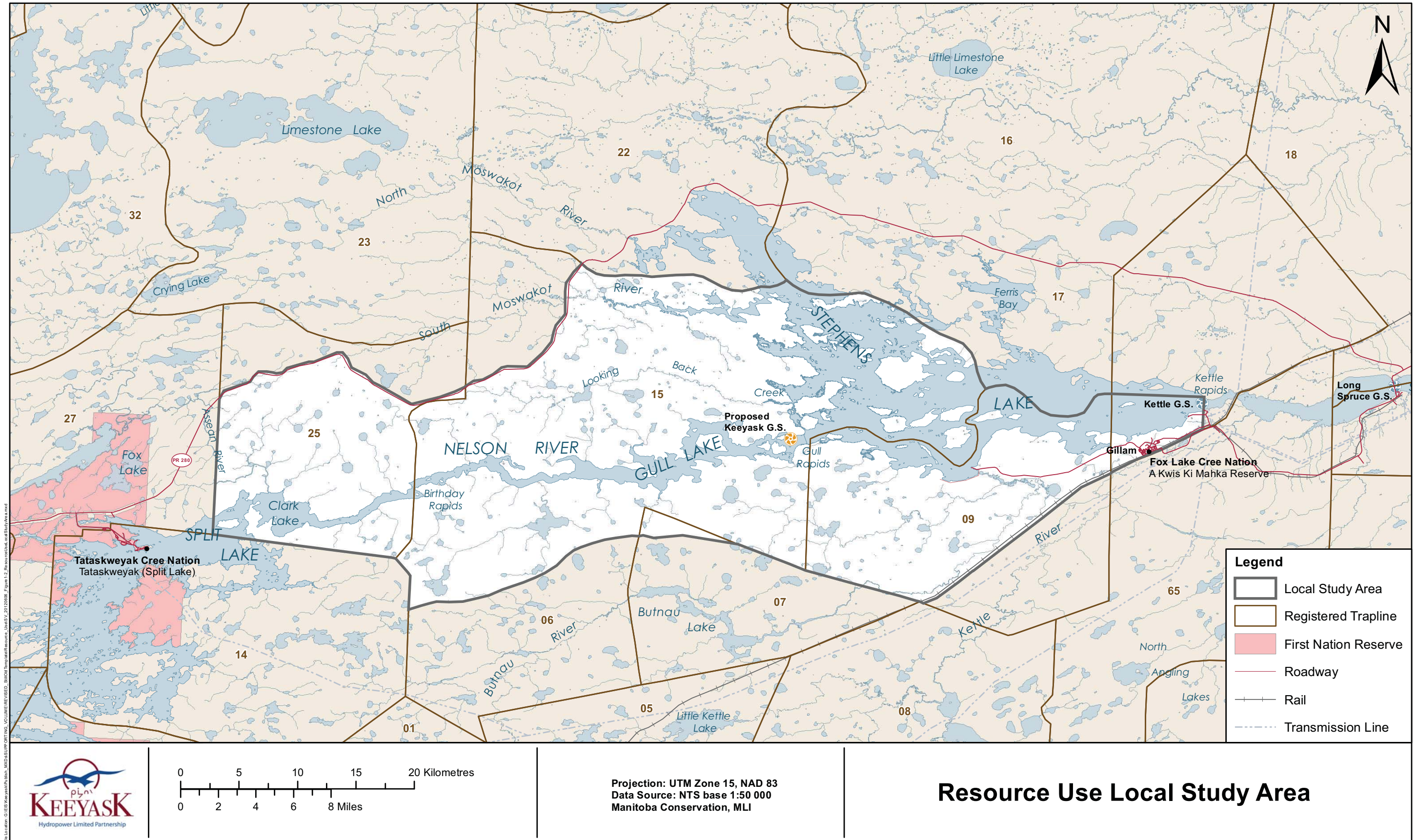
Environmental Impact Statement

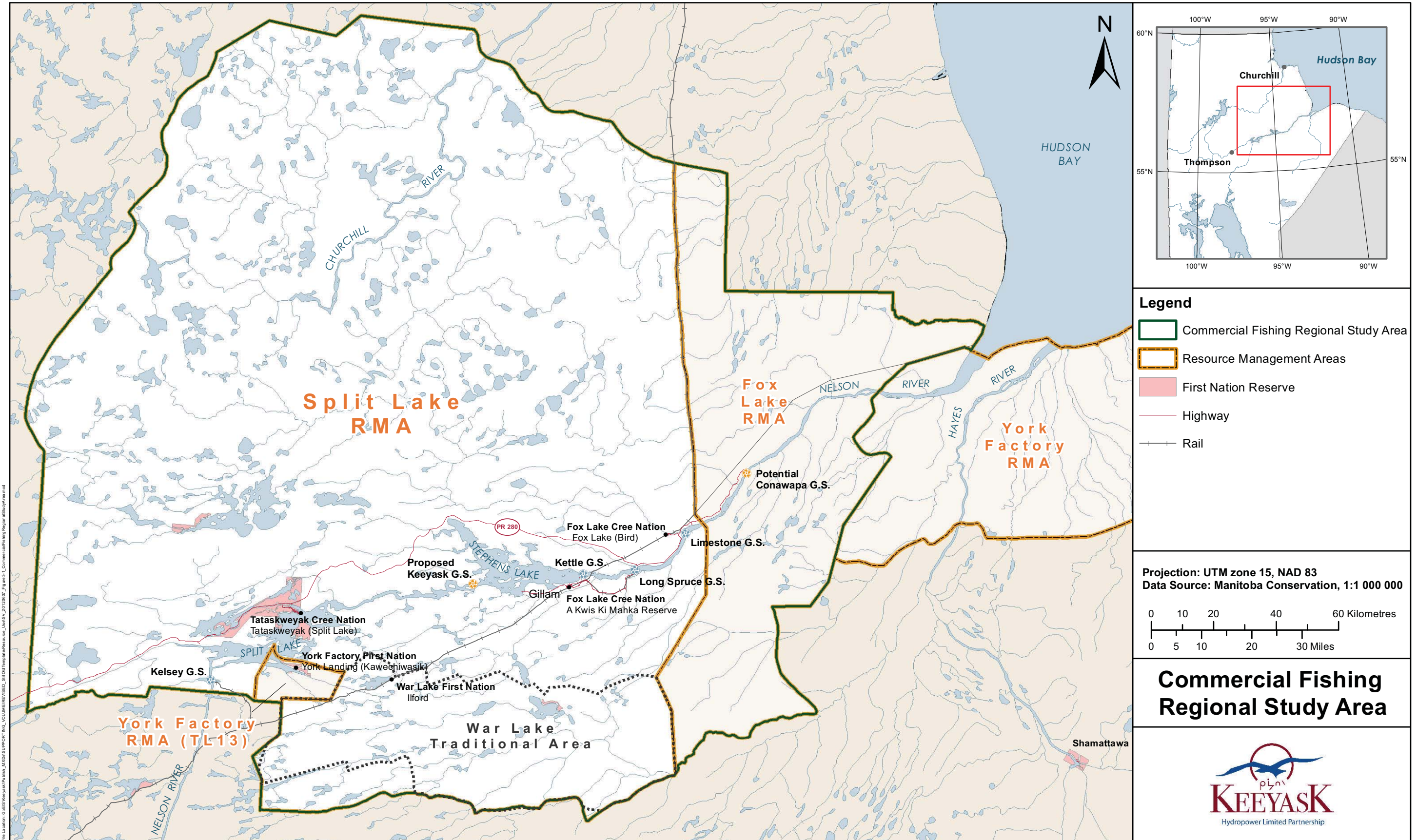
Supporting Volume
Socio-Economic Environment,
Resource Use and Heritage Resources



June 2012

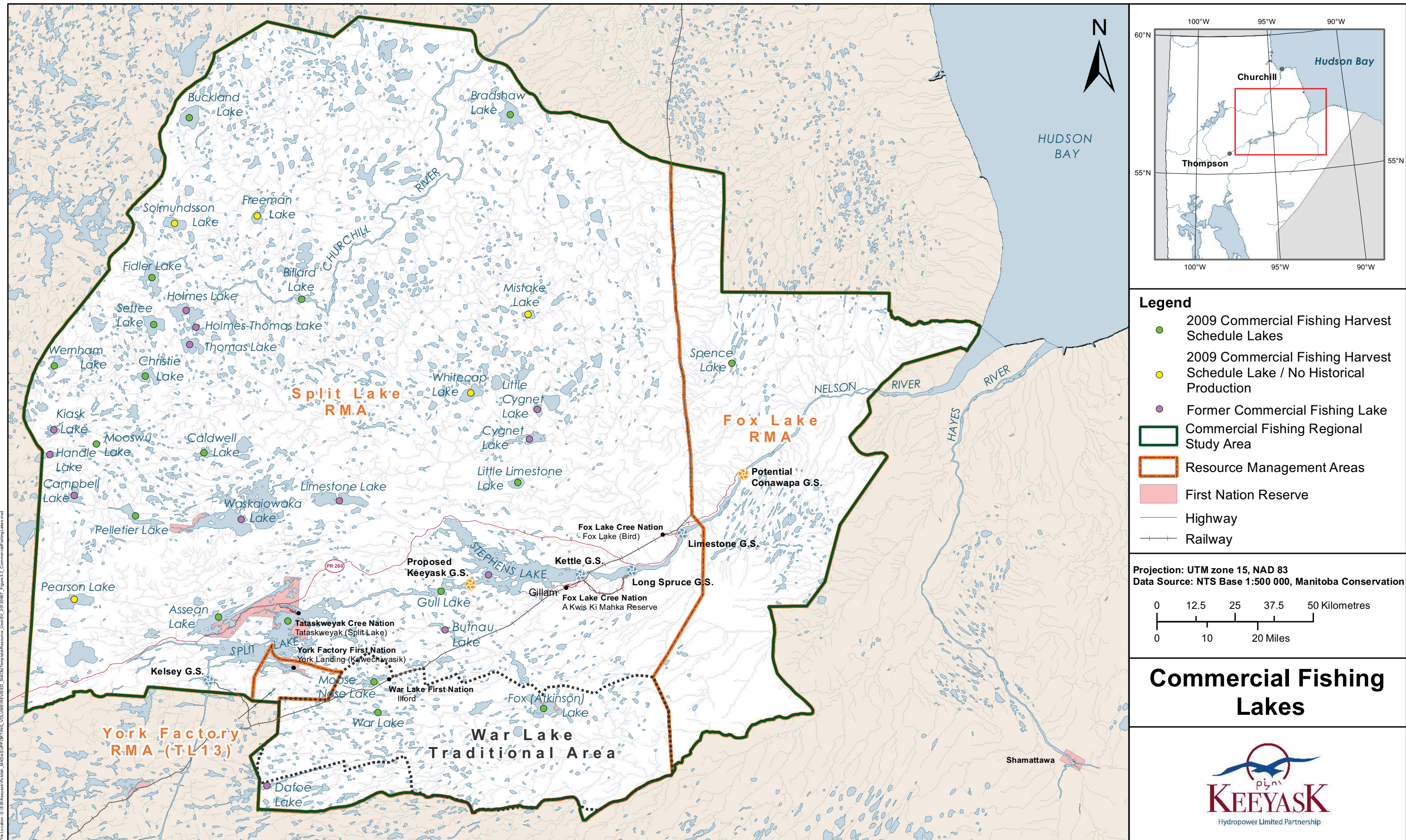


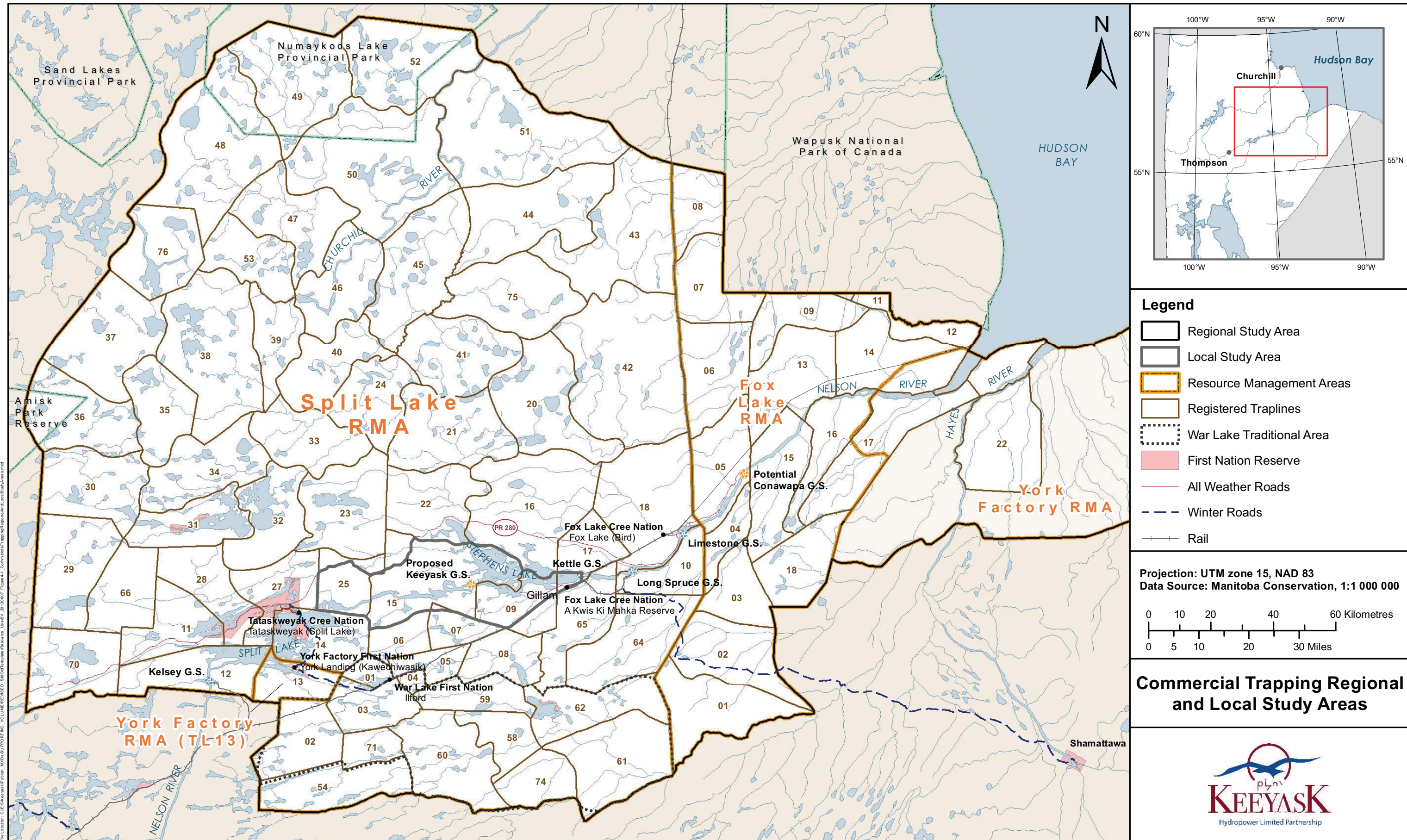




Commercial Fishing Regional Study Area

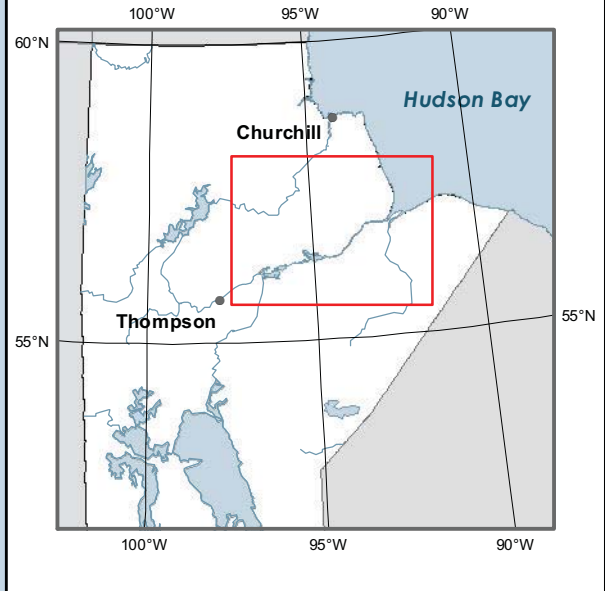
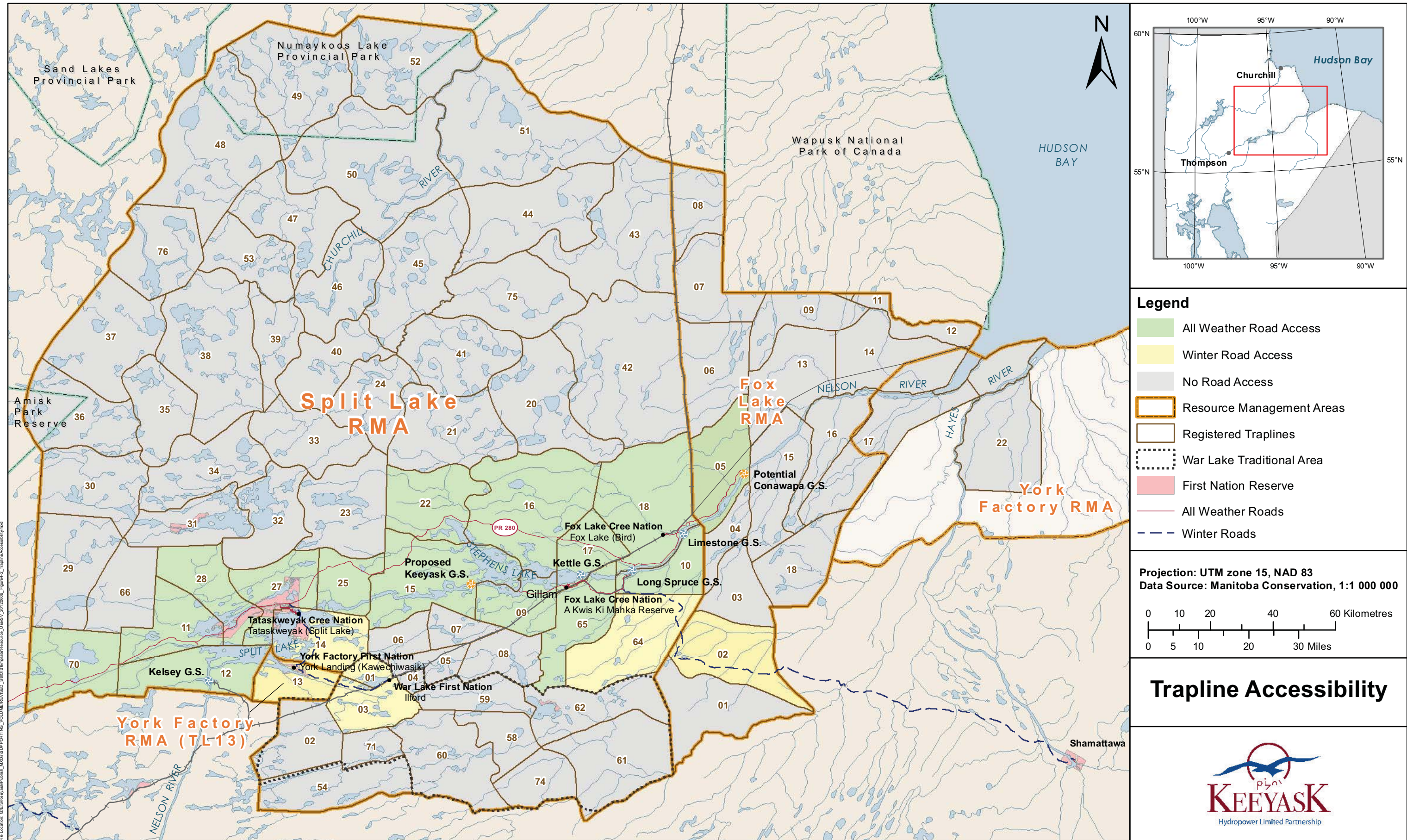






File Location: G:\ES\Keyyask\Public\Map\Map\REPORTING_VOLUMES\REVISED_Split\Map\RegionalAndLocalStudyAreas.mxd





Legend

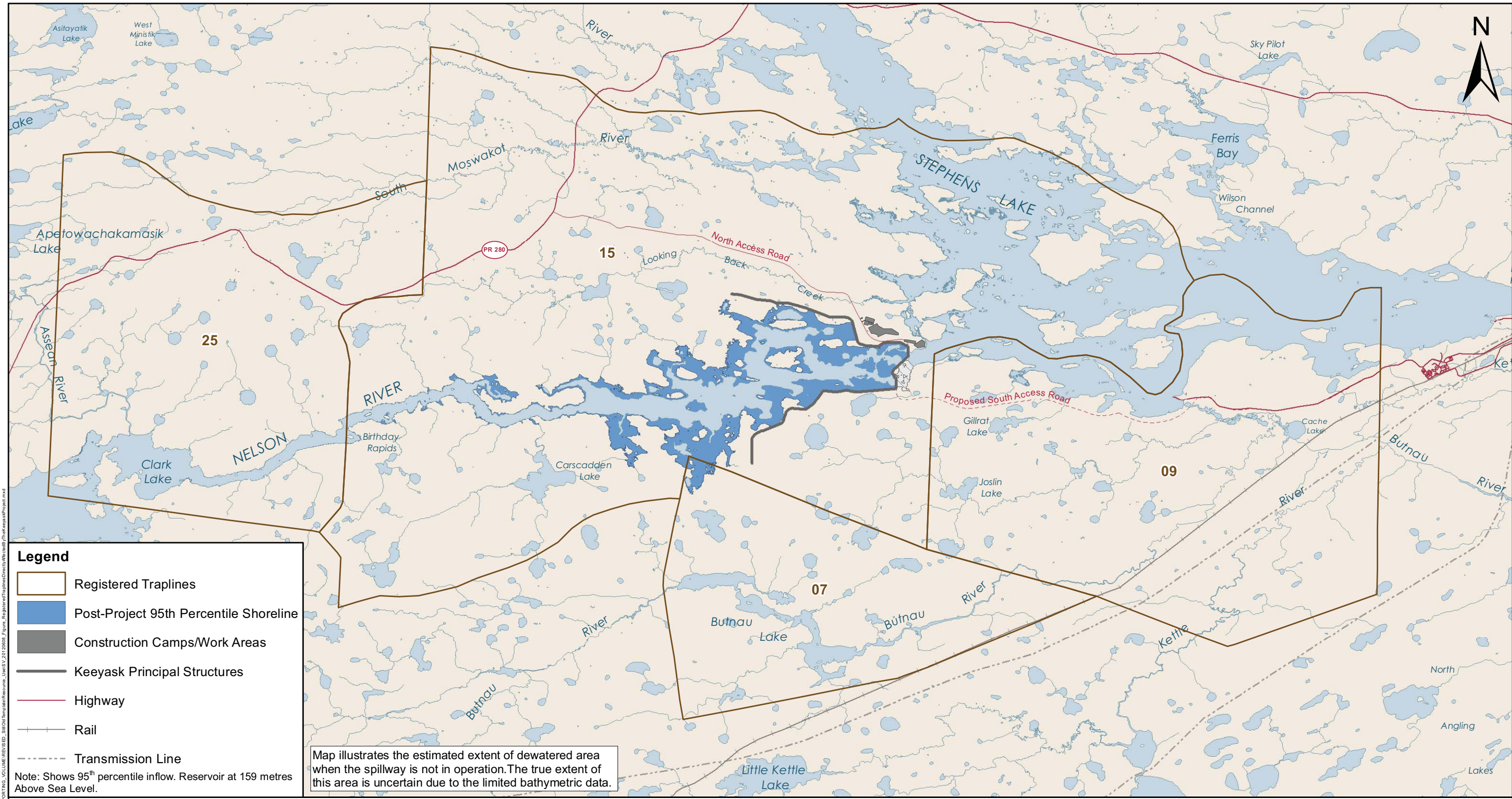
- All Weather Road Access
- Winter Road Access
- No Road Access
- Resource Management Areas
- Registered Traplines
- War Lake Traditional Area
- First Nation Reserve
- All Weather Roads
- Winter Roads

Projection: UTM zone 15, NAD 83
 Data Source: Manitoba Conservation, 1:1 000 000

0 10 20 40 60 Kilometres
 0 5 10 20 30 Miles

Trapline Accessibility





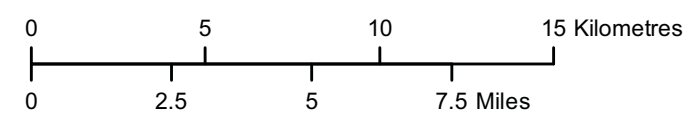
File Location: G:\EEB\Keeyask\Subarea_MCOAS\SUPPORTING_VOLUMES\REVISED_SAR\03\Map\MapResources_Web\SV_20120608_Figure_RegisteredTraplinesDirectlyAffectedByTheKeeyaskProject.mxd

Legend

- Registered Traplines
- Post-Project 95th Percentile Shoreline
- Construction Camps/Work Areas
- Keeyask Principal Structures
- Highway
- Rail
- Transmission Line

Note: Shows 95th percentile inflow. Reservoir at 159 metres Above Sea Level.

Map illustrates the estimated extent of dewatered area when the spillway is not in operation. The true extent of this area is uncertain due to the limited bathymetric data.



Projection: UTM Zone 15, NAD 83
 Data Source: NTS base 1:50 000
 Stephens Lake Shoreline - Quickbird@Digitalglobe, 2006
 Nelson River Shoreline modelled by Manitoba Hydro

Registered Traplines Directly Affected by the Keeyask Project