

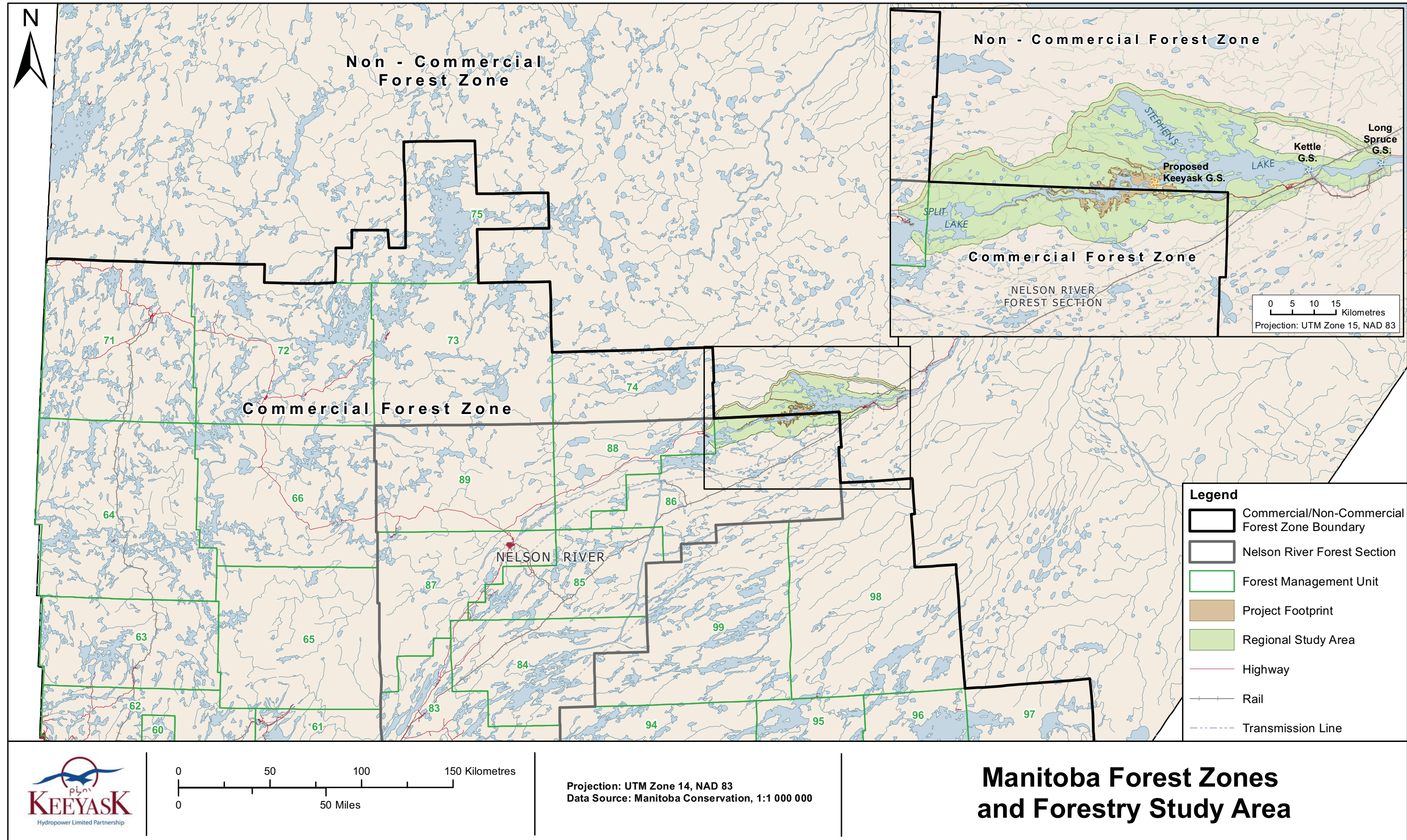


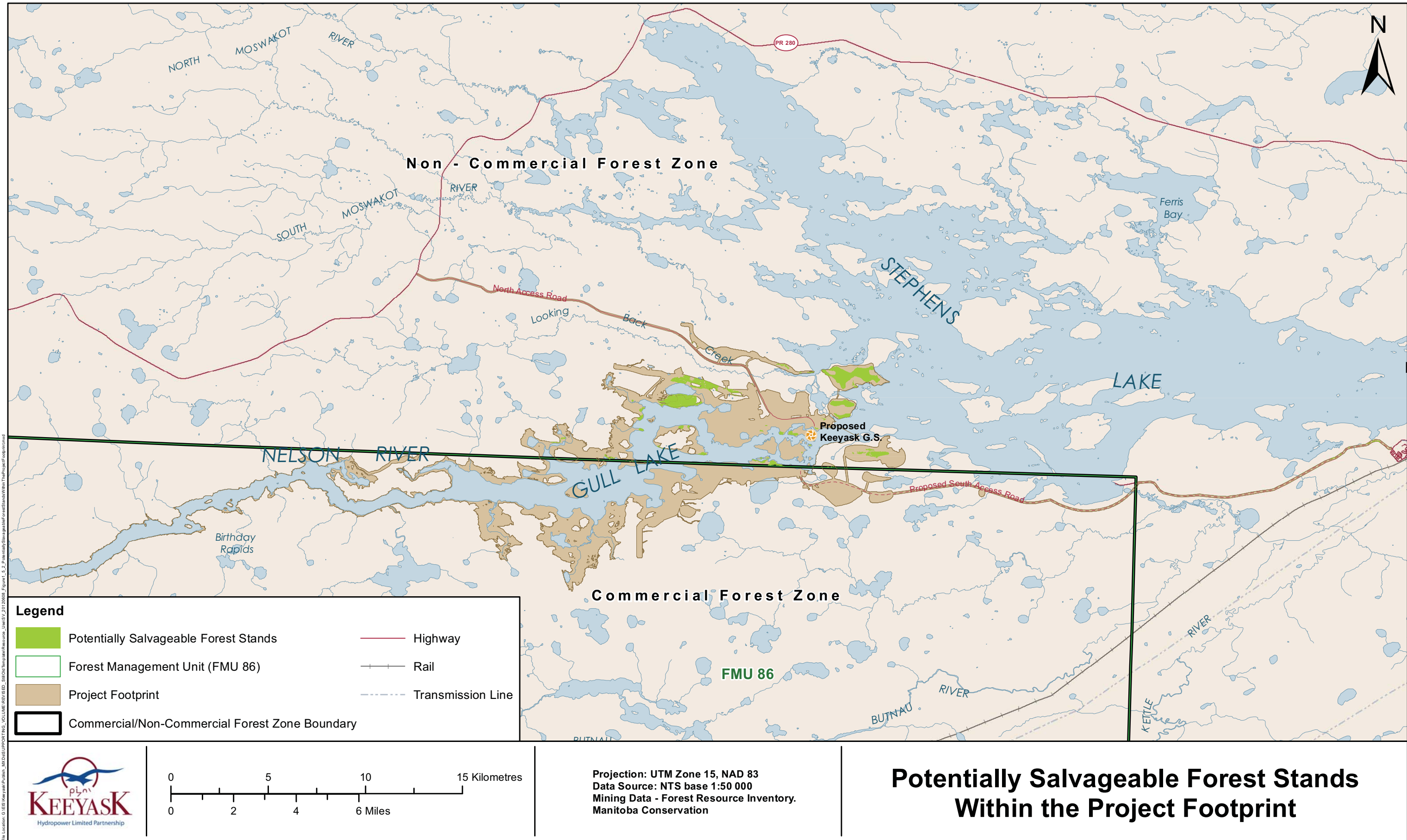
Keeyask Generation Project Environmental Impact Statement

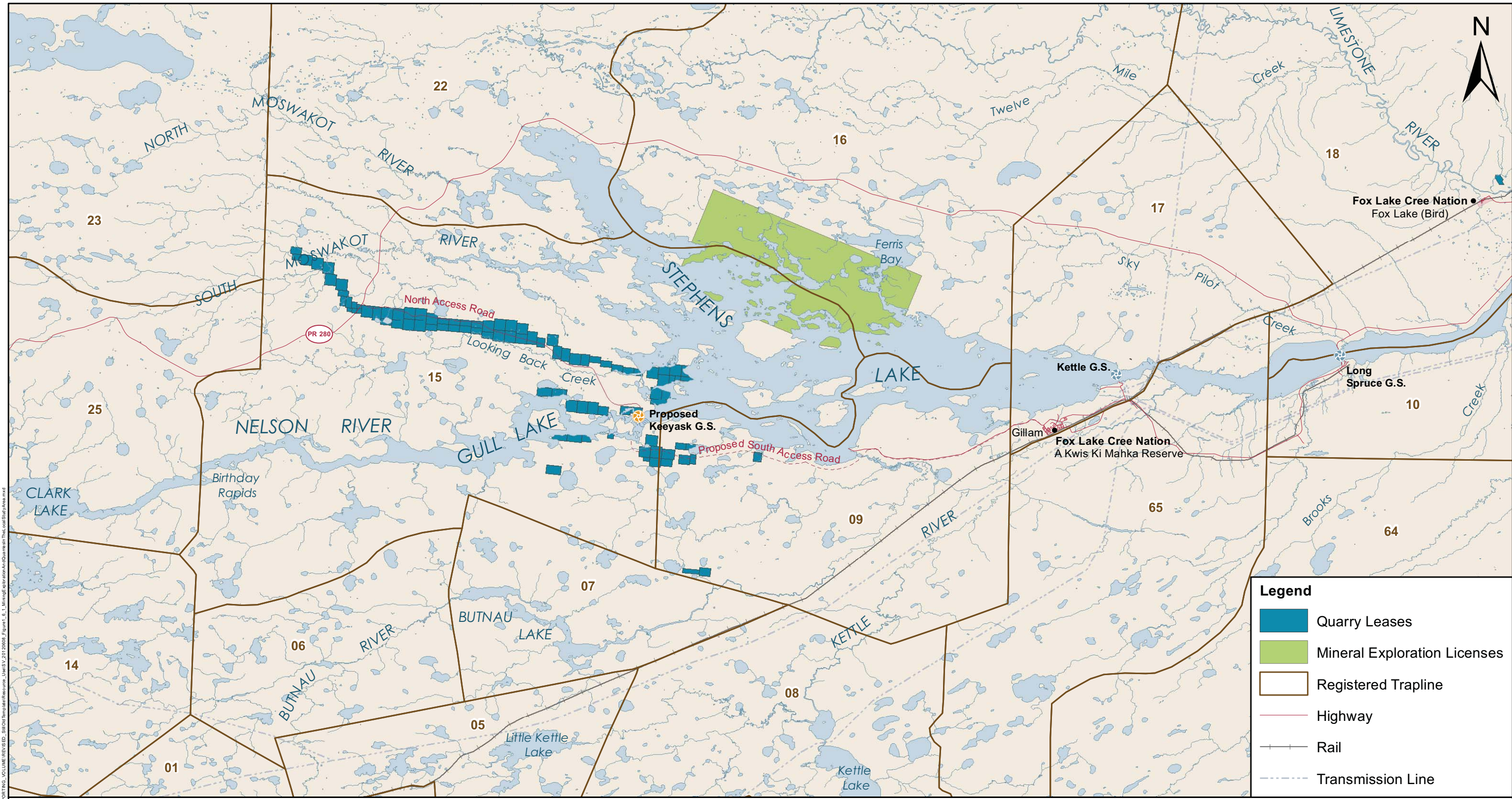
Supporting Volume
Socio-Economic Environment,
Resource Use and Heritage Resources



June 2012

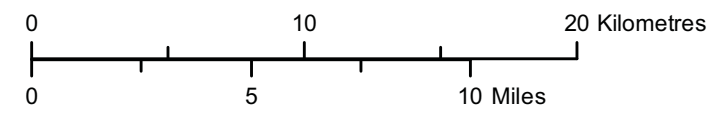






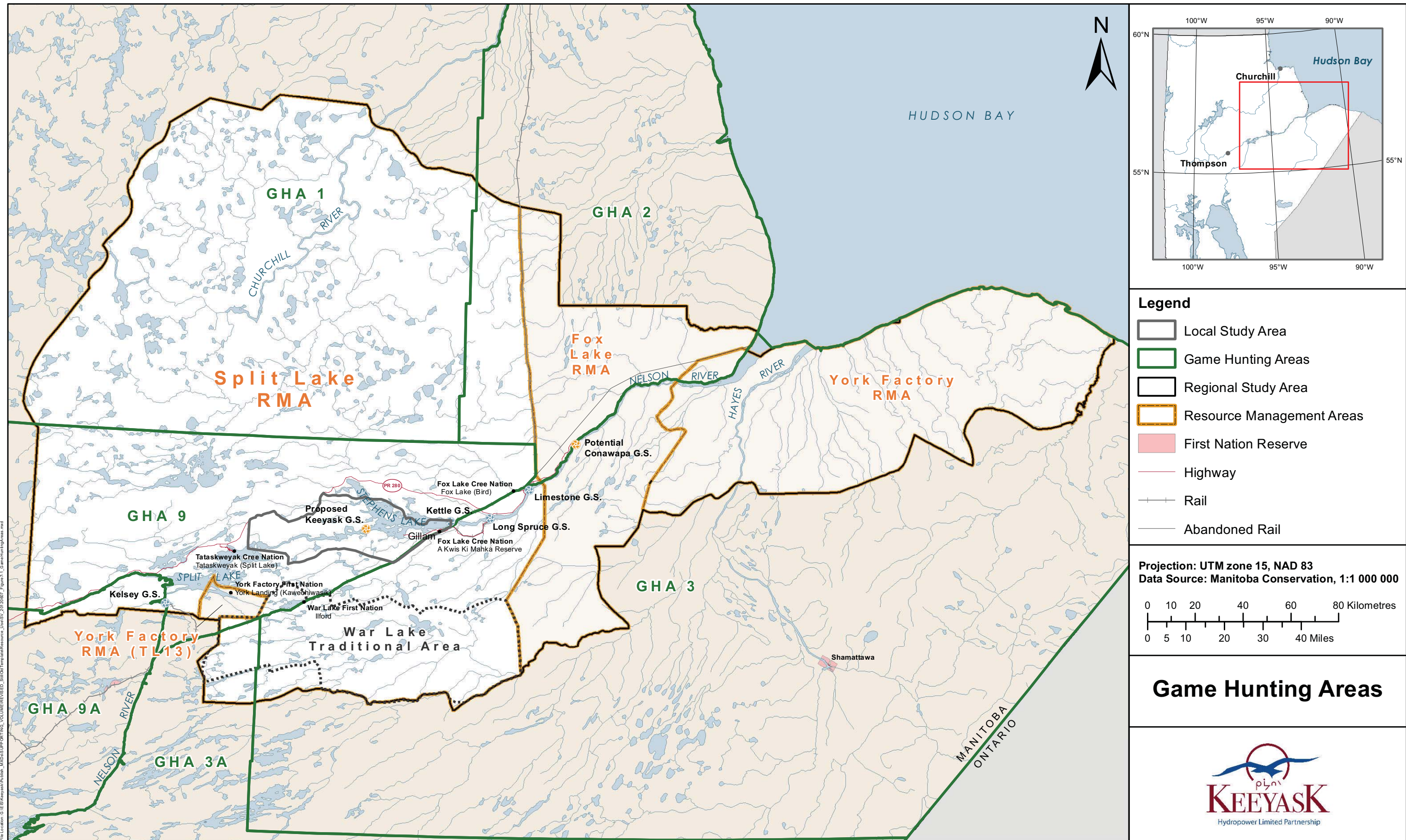
Legend

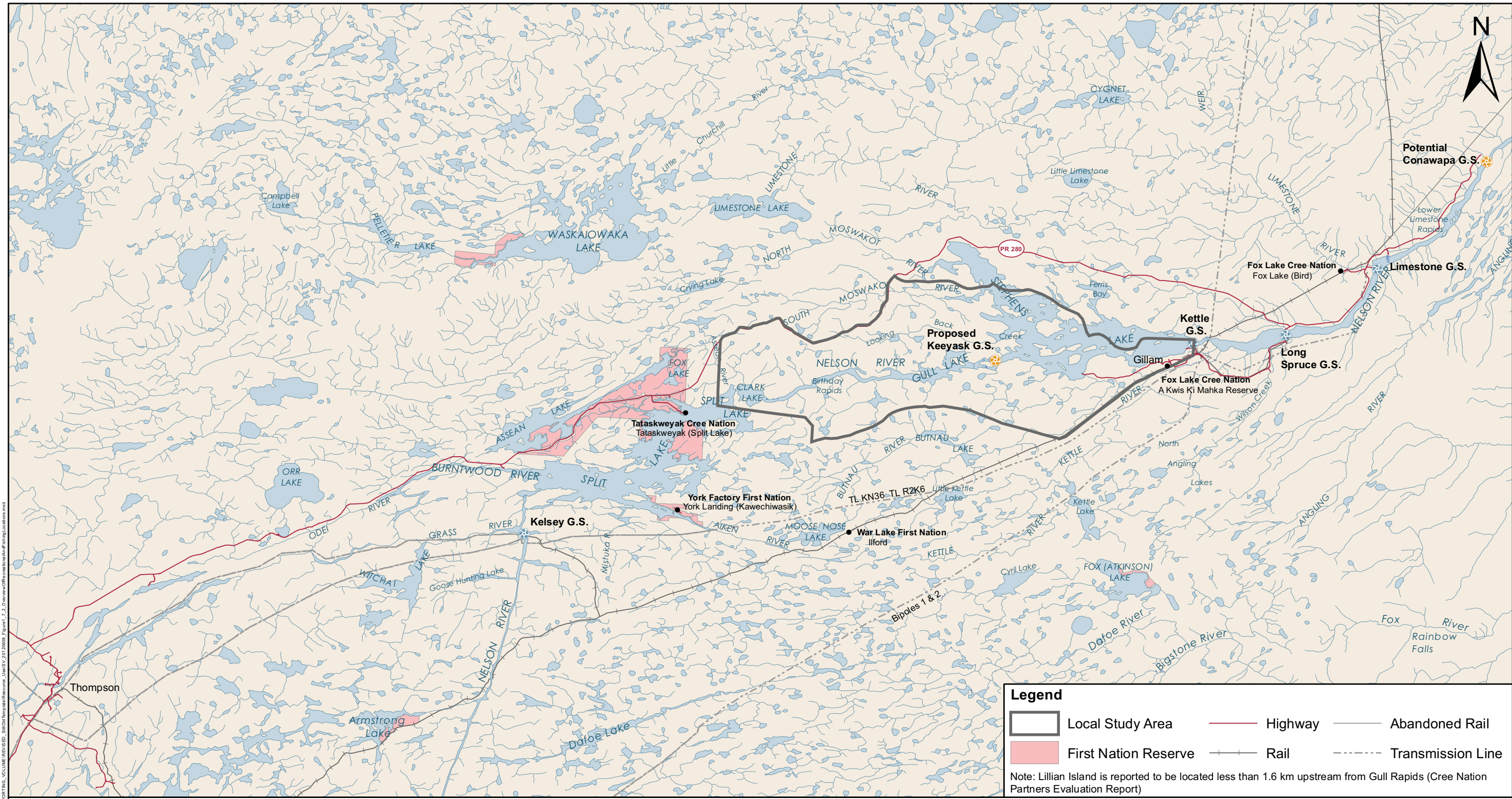
- Quarry Leases
- Mineral Exploration Licenses
- Registered Trapline
- Highway
- Rail
- Transmission Line







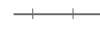

Projection: UTM Zone 15, NAD 83
 Data Source: NTS base 1:50 000
 Mining data - Province of Manitoba

Mining Exploration and Quarries in the Local Study Area

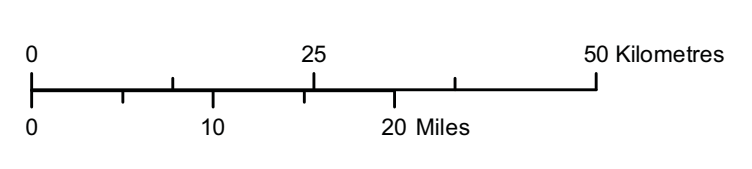




Legend

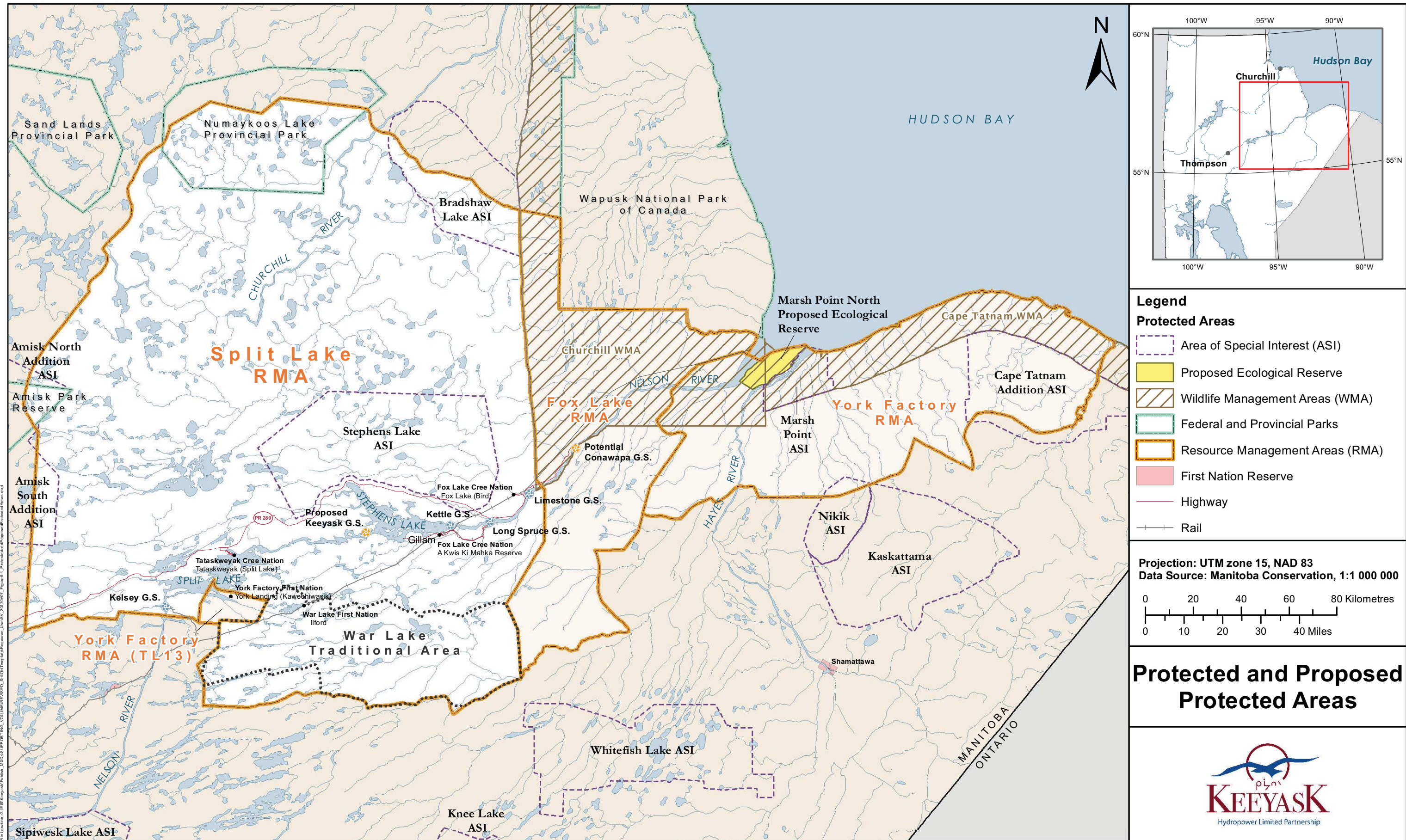
	Local Study Area		Highway		Abandoned Rail
	First Nation Reserve		Rail		Transmission Line

Note: Lillian Island is reported to be located less than 1.6 km upstream from Gull Rapids (Cree Nation Partners Evaluation Report)



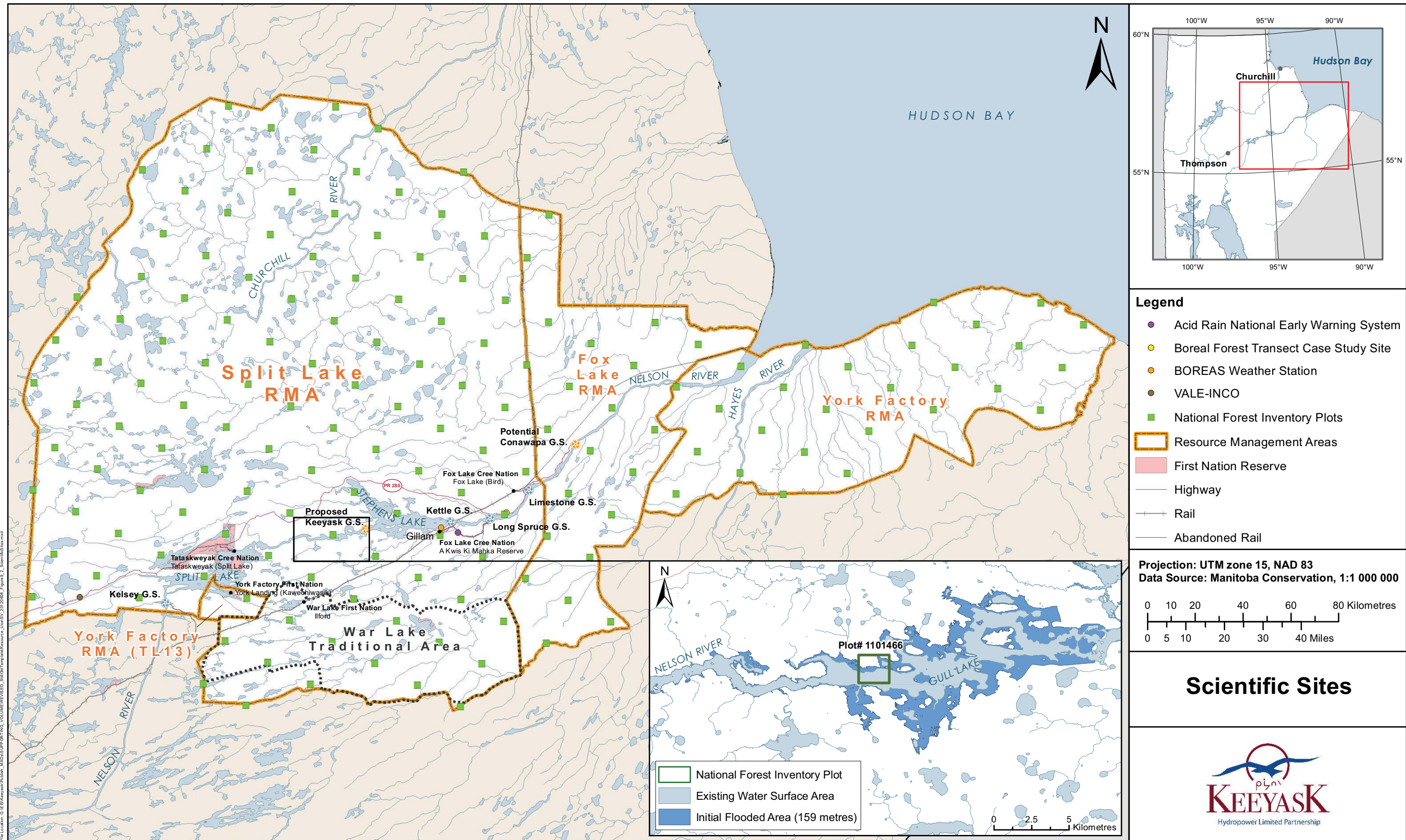
Projection: UTM Zone 15, NAD 83
Data Source: Manitoba Conservation, 1:500 000

Overview of Recreational Hunting and Fishing Locations



File Location: G:\ES\Keyyask\Public_Maps\Supporting_VOLUMEREVISED_SplitLakeResource_Urban_V_20120807_Figure 8_L_ProtectedAreas.mxd





Legend

- Acid Rain National Early Warning System
- Boreal Forest Transect Case Study Site
- BOREAS Weather Station
- VALE-INCO
- National Forest Inventory Plots
- ▭ Resource Management Areas
- ▭ First Nation Reserve
- Highway
- Rail
- Abandoned Rail

Projection: UTM zone 15, NAD 83
 Data Source: Manitoba Conservation, 1:1 000 000

0 10 20 40 60 80 Kilometres
 0 5 10 20 30 40 Miles

Scientific Sites

