

**DATA SOURCE:**  
Manitoba Hydro; Government of Manitoba; Government of Canada;  
Manitoba Hydro 2010 and 1986 to 2003 Topographic Contour Composite

**CREATED BY:**  
Manitoba Hydro - Hydro Power Planning - GIS & Special Studies

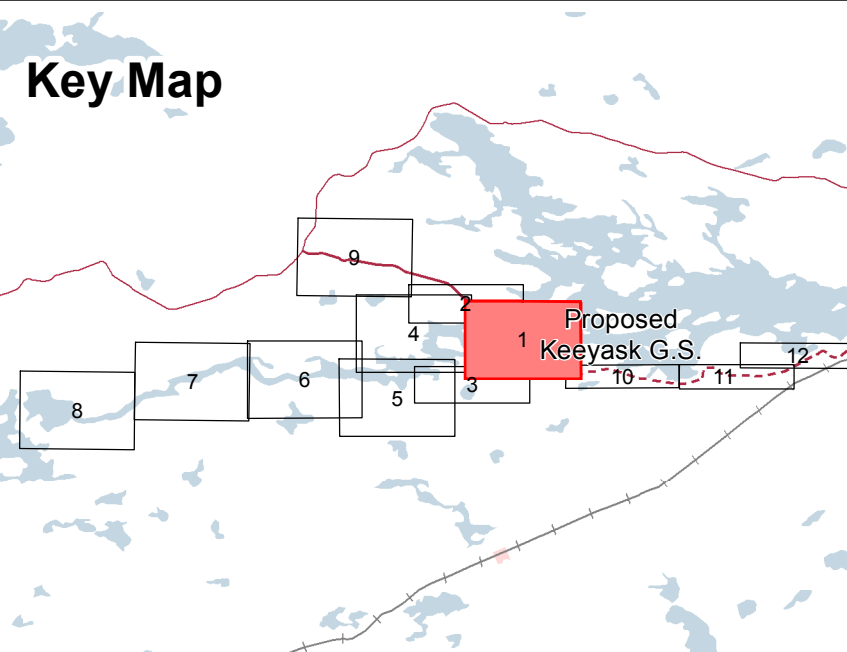
**COORDINATE SYSTEM:**  
UTM NAD 1983 Z15N

**DATE CREATED:**  
01-JUN-13

**REVISION DATE:**  
21-JUN-13

**VERSION NO.:**  
1.0

**QA/QC:**  
APPROVED



**Legend**

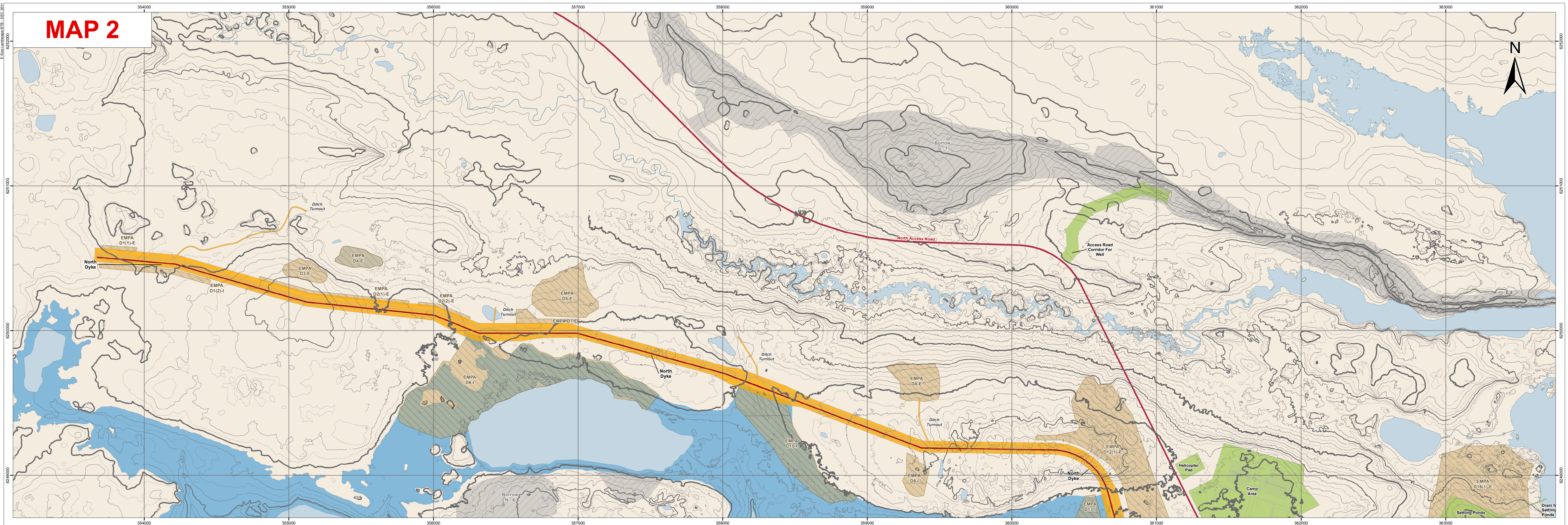
|                          |                                   |                      |                          |   |
|--------------------------|-----------------------------------|----------------------|--------------------------|---|
| 10 metre (e.g. 150, 160) | Approach and Discharge Channels   | Access Road          | Boat Launch              | Existing Water Area                                 |
| 5 metre (e.g. 145, 155)  | Principal Structures              | Proposed Access Road | Boat Launch Access Trail | Dewatered Area (Potential)                          |
| 2 metre (e.g. 152, 154)  | Supporting Infrastructure         | Borrow Area          | Portage Route            | Initial Flooded Area (159 m) - 95th Percentile Flow |
| 1 metre (e.g. 151, 153)  | Excavated Material Placement Area |                      |                          |   |

Map illustrates the estimated extent of the dewatered area when the spillway is not in operation. The true extent of this area is uncertain due to the limited bathymetric data.

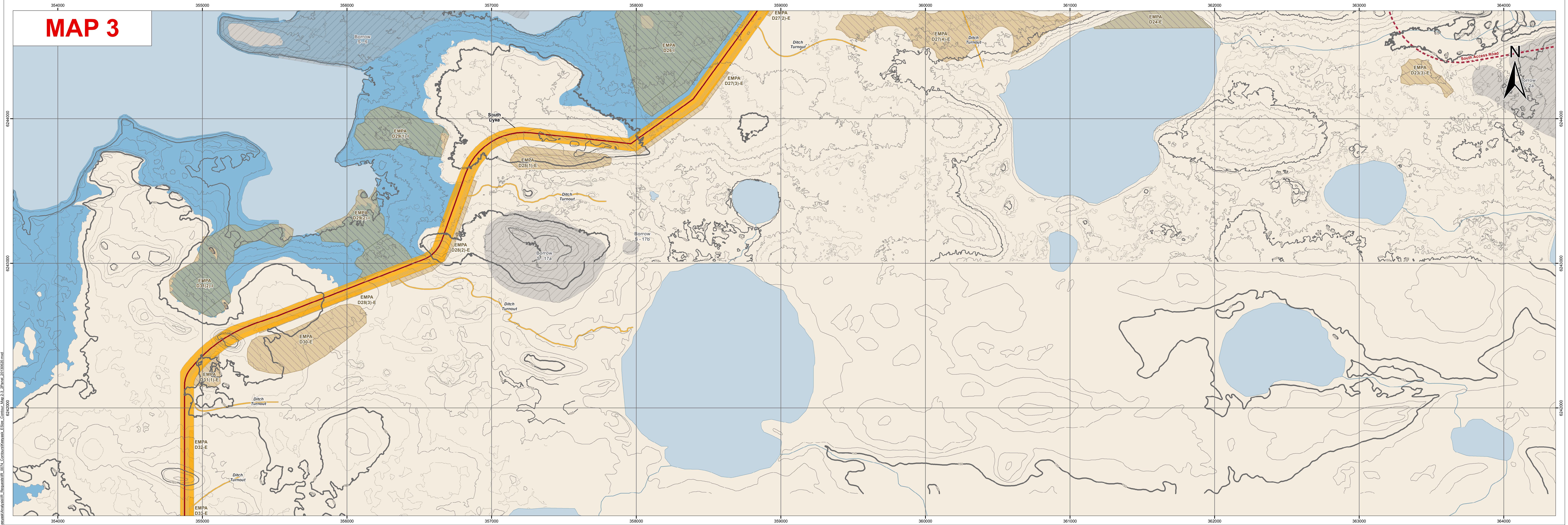
## Keeyask Generation Project Elevation Contours

**MAP 1**

# MAP 2



# MAP 3



**DATA SOURCE:**  
Manitoba Hydro; Government of Manitoba; Government of Canada;  
Manitoba Hydro 2010 and 1986 to 2003 Topographic Contour Composite

**CREATED BY:**  
Manitoba Hydro - Hydro Power Planning - GIS & Special Studies

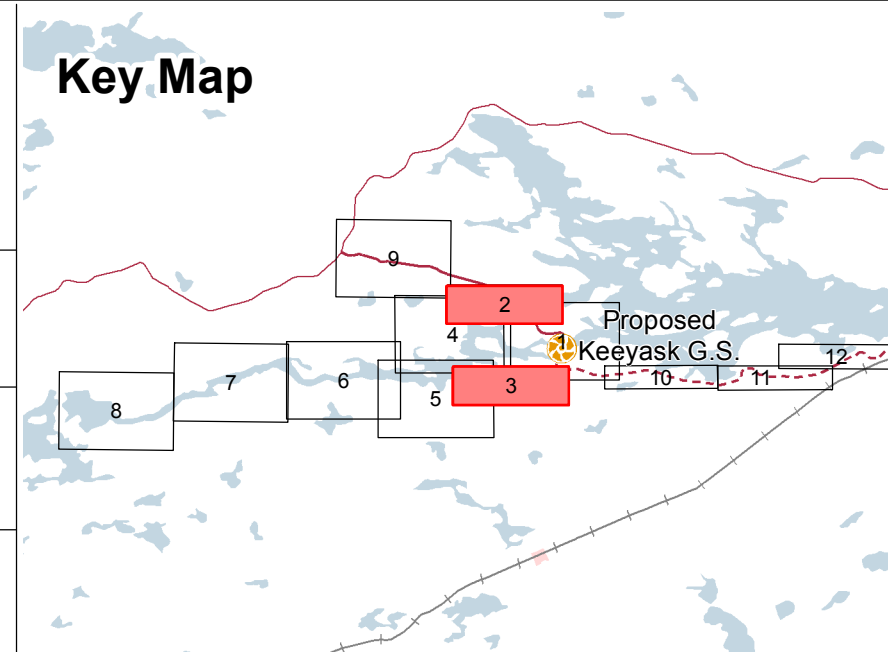
**COORDINATE SYSTEM:**  
UTM NAD 1983 Z15N

**DATE CREATED:**  
23-AUG-12

**REVISION DATE:**  
24-JUN-13

**VERSION NO.:**  
1.0

**QA/QC:**  
APPROVED



| Legend  |                                 |
|---|---------------------------------|
| 10 metre (e.g. 140, 150)                            | Approach and Discharge Channels |
| 5 metre (e.g. 145, 155)                             | Principal Structures            |
| 2 metre (e.g. 142, 144)                             | Supporting Infrastructure       |
| 1 metre (e.g. 141, 143)                             | Borrow Area                     |
| Excavated Material Placement Area                   | Access Road                     |
| Proposed Access Road                                | Boat Launch                     |
| Boat Launch Access Trail                            | Portage Route                   |
| Existing Water Area                                 | Dewatered Area (Potential)      |
| Initial Flooded Area (159 m) - 95th Percentile Flow |                                 |

## Keeyask Generation Project Elevation Contours

### MAP 2, 3



**DATA SOURCE:**  
Manitoba Hydro; Government of Manitoba; Government of Canada;  
Manitoba Hydro 2010 and 1986 to 2003 Topographic Contour Composite

**CREATED BY:**  
Manitoba Hydro - Hydro Power Planning - GIS & Special Studies

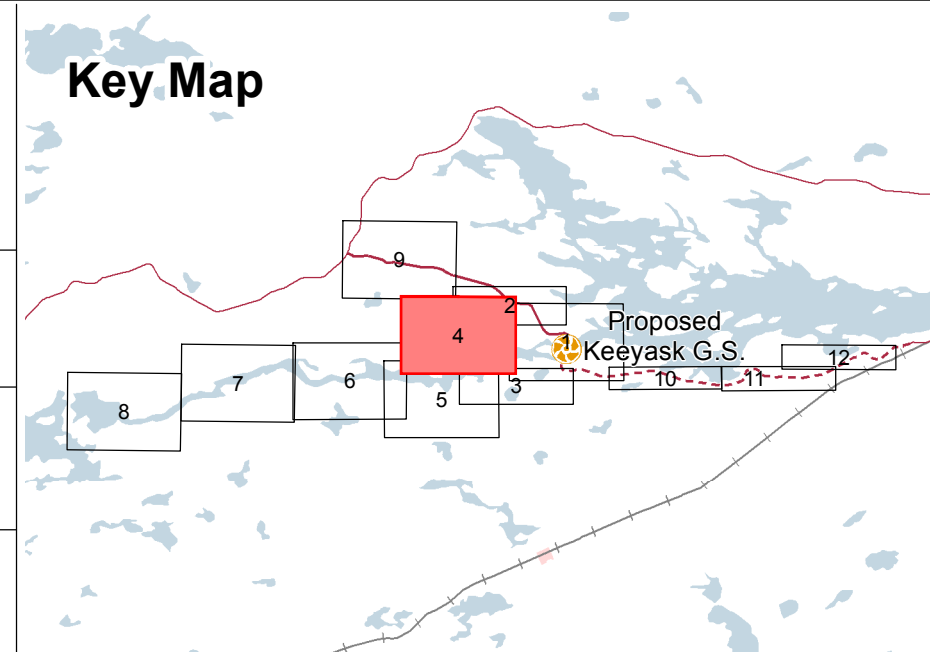
**COORDINATE SYSTEM:**  
UTM NAD 1983 Z15N

**DATE CREATED:**  
01-JUN-13

**REVISION DATE:**  
21-JUN-13

**VERSION NO.:**  
1.0

**QA/QC:**  
APPROVED



**Legend**

**Contour Elevation**

- 10 metre (e.g. 150, 160)
- 5 metre (e.g. 145, 155)
- 2 metre (e.g. 152, 154)
- 1 metre (e.g. 151, 153)

**Approach and Discharge Channels**

**Principal Structures**

**Supporting Infrastructure**

**Borrow Area**

**Excavated Material Placement Area**

**Access Road**

**Proposed Access Road**

**Boat Launch**

**Boat Launch Access Trail**

**Portage Route**

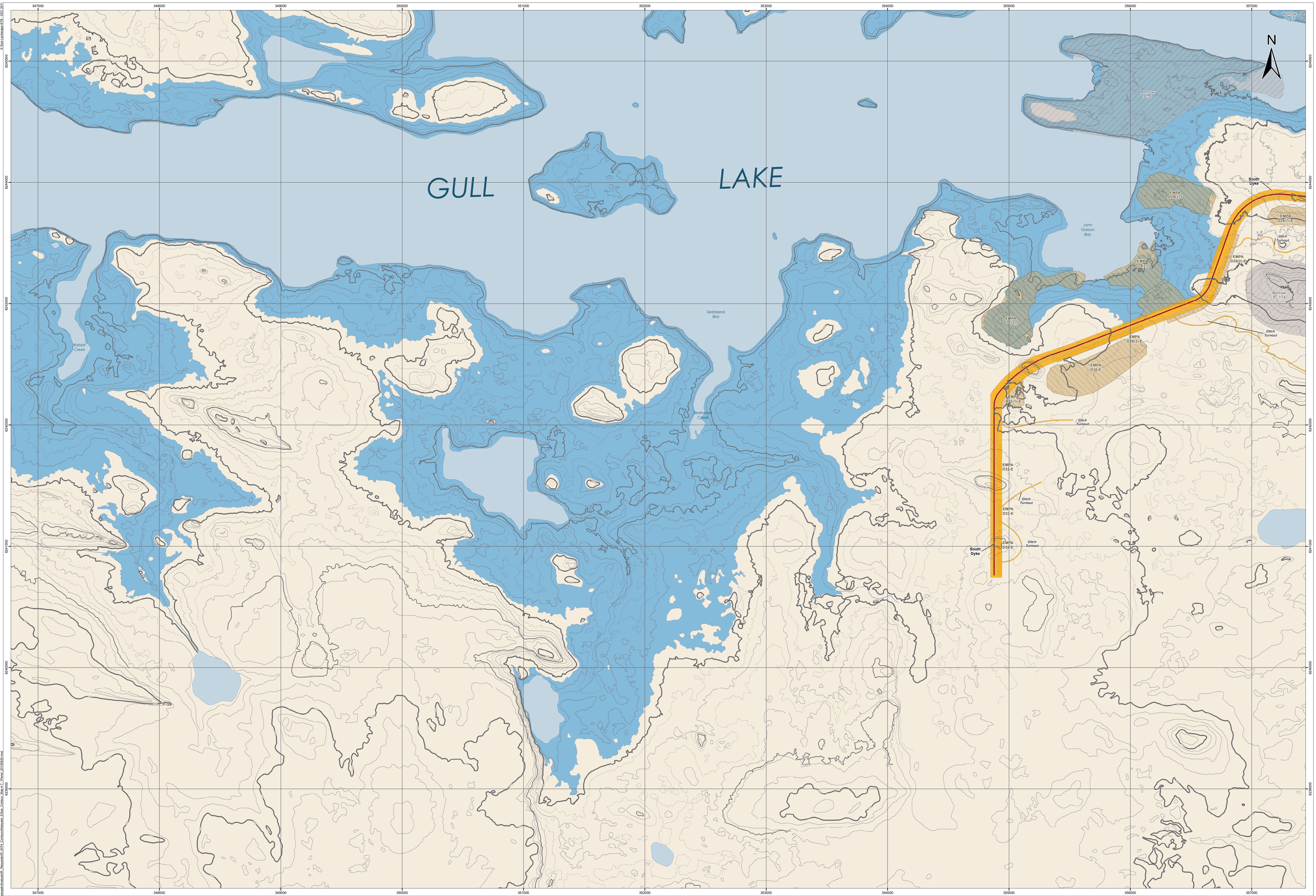
**Existing Water Area**

**Dewatered Area (Potential)**

**Initial Flooded Area (159 m) - 95th Percentile Flow**

**Keyeyask Generation Project  
Elevation Contours**

**MAP 4**



**DATA SOURCE:**  
Manitoba Hydro: Government of Manitoba; Government of Canada;  
Manitoba Hydro 2010 and 1986 to 2003 Topographic Contour  
Composite

**CREATED BY:**  
Manitoba Hydro - Hydro Power Planning - GIS & Special Studies

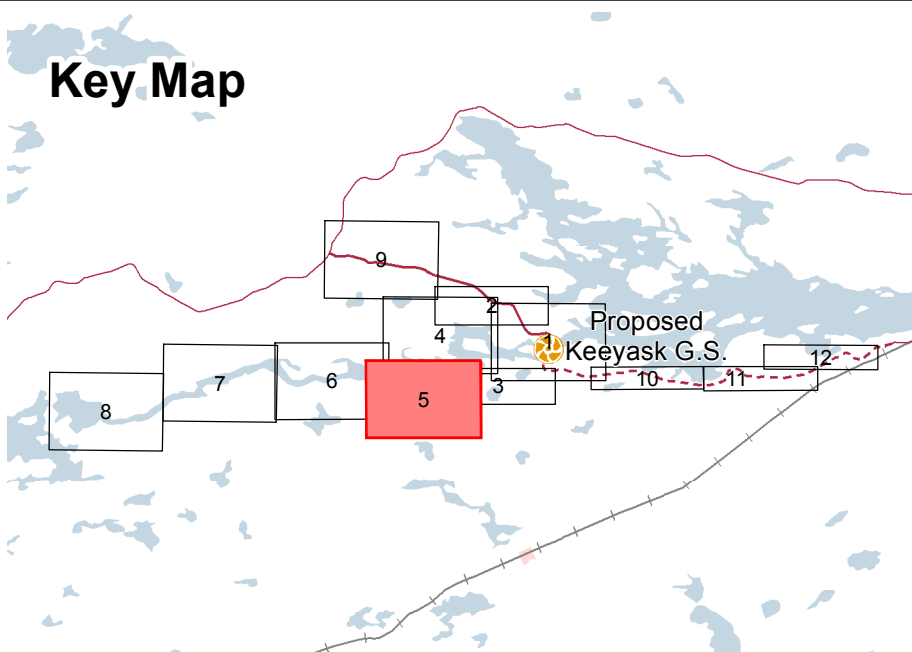
**COORDINATE SYSTEM:**  
UTM NAD 1983 Z15N

**DATE CREATED:**  
01-JUN-13

**REVISION DATE:**  
21-JUN-13

**VERSION NO.:**  
1.0

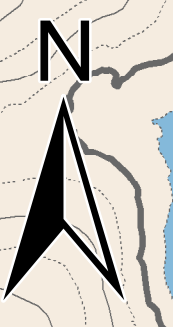
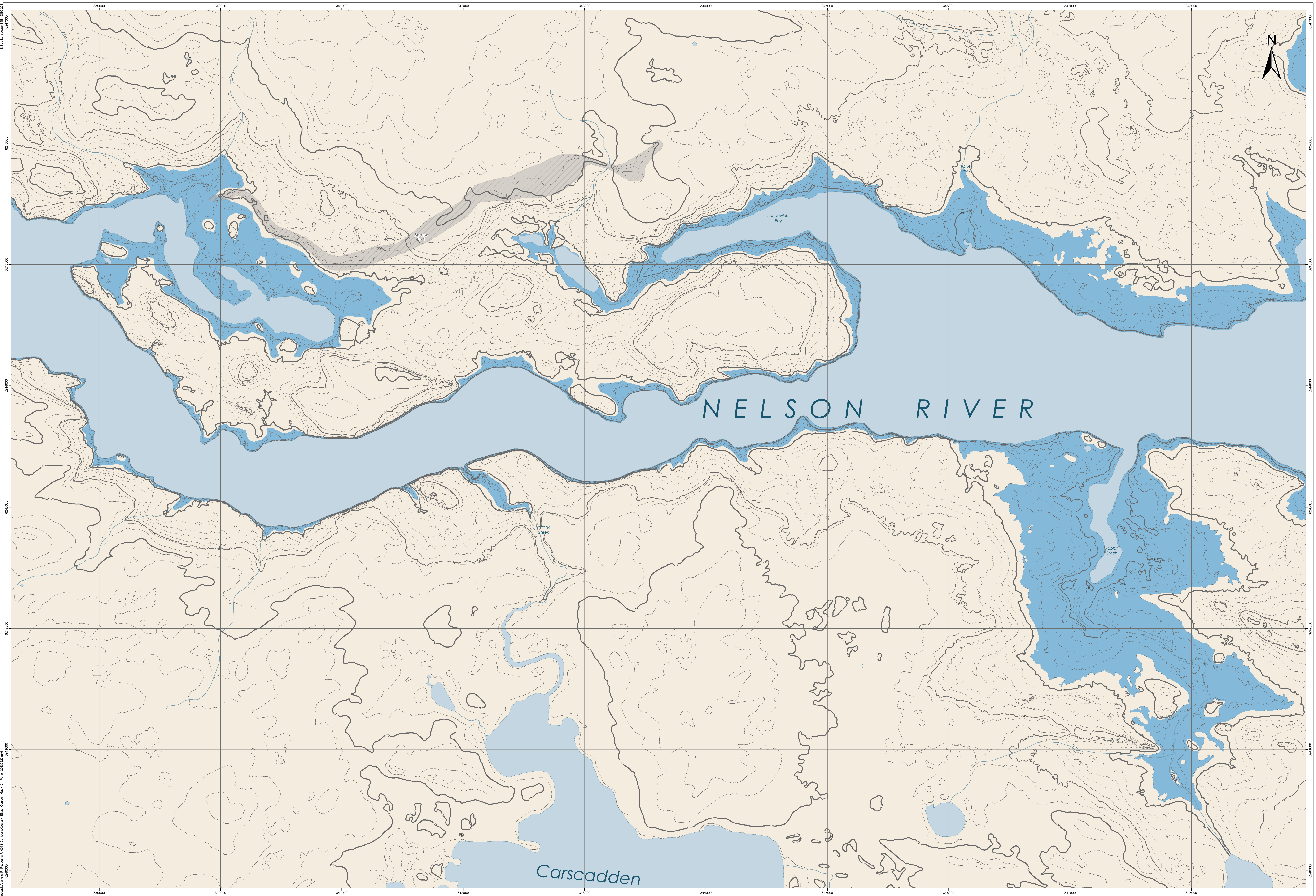
**QA/QC:**  
APPROVED



- Legend**
- Contour Elevation**
    - 10 metre (e.g. 150, 160)
    - 5 metre (e.g. 145, 155)
    - 2 metre (e.g. 152, 154)
    - 1 metre (e.g. 151, 153)
  - Approach and Discharge Channels
  - Principal Structures
  - Supporting Infrastructure
  - Borrow Area
  - Excavated Material Placement Area
  - Access Road
  - Proposed Access Road
  - Boat Launch
  - Boat Launch Access Trail
  - Portage Route
  - Existing Water Area
  - Dewatered Area (Potential)
  - Initial Flooded Area (159 m) - 95th Percentile Flow

**Keeyask Generation Project  
Elevation Contours**

**MAP 5**



**DATA SOURCE:**  
Manitoba Hydro: Government of Manitoba; Government of Canada;  
Manitoba Hydro 2010 and 1986 to 2003 Topographic Contour Composite

**CREATED BY:**  
Manitoba Hydro - Hydro Power Planning - GIS & Special Studies

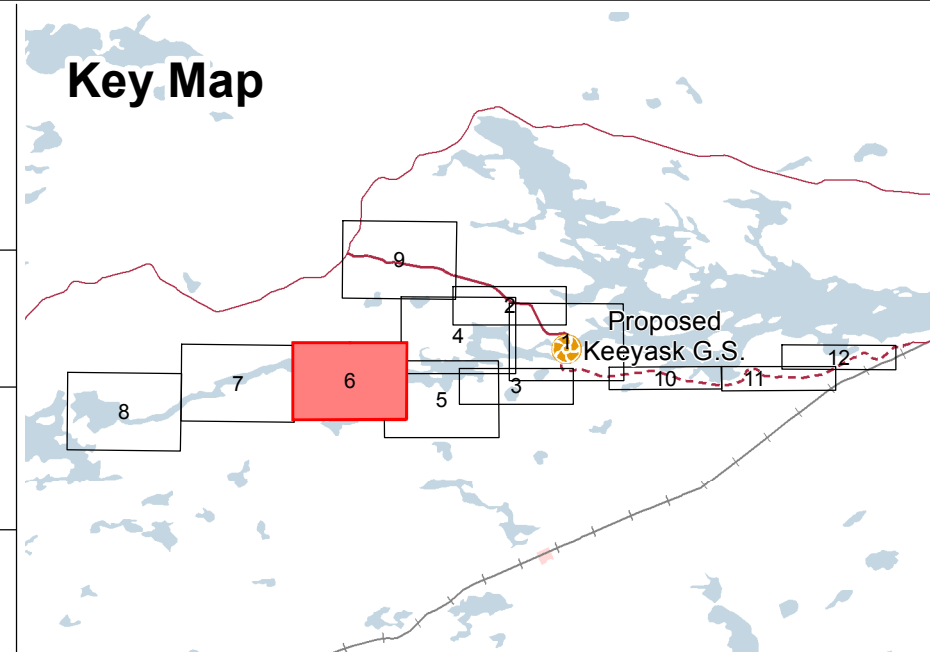
**COORDINATE SYSTEM:**  
UTM NAD 1983 Z15N

**DATE CREATED:**  
01-JUN-13

**REVISION DATE:**  
21-JUN-13

**VERSION NO.:**  
1.0

**QA/QC:**  
APPROVED



| Legend                   |   |
|--------------------------|---|
| <b>Contour Elevation</b> |   |
| 10 metre (e.g. 150, 160) | Approach and Discharge Channels                     |
| 5 metre (e.g. 145, 155)  | Principal Structures                                |
| 2 metre (e.g. 152, 154)  | Supporting Infrastructure                           |
| 1 metre (e.g. 151, 153)  | Borrow Area   |
|                          | Excavated Material Placement Area                   |
|                          | Access Road   |
|                          | Proposed Access Road                                |
|                          | Boat Launch   |
|                          | Boat Launch Access Trail                            |
|                          | Portage Route                                       |
|                          | Existing Water Area                                 |
|                          | Dewatered Area (Potential)                          |
|                          | Initial Flooded Area (159 m) - 95th Percentile Flow |

## Keeyask Generation Project Elevation Contours

**MAP 6**



**DATA SOURCE:**  
 Manitoba Hydro; Government of Manitoba; Government of Canada;  
 Manitoba Hydro 2010 and 1986 to 2003 Topographic Contour Composite

**CREATED BY:**  
 Manitoba Hydro - Hydro Power Planning - GIS & Special Studies

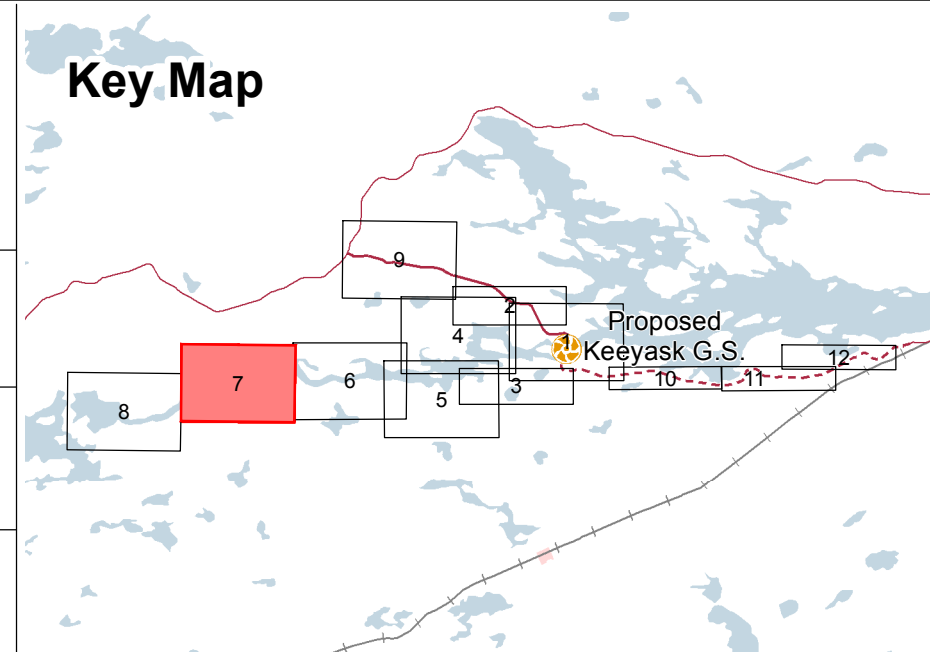
**COORDINATE SYSTEM:**  
 UTM NAD 1983 Z15N

**DATE CREATED:**  
 01-JUN-13

**REVISION DATE:**  
 21-JUN-13

**VERSION NO.:**  
 1.0

**QA/QC:**  
 APPROVED

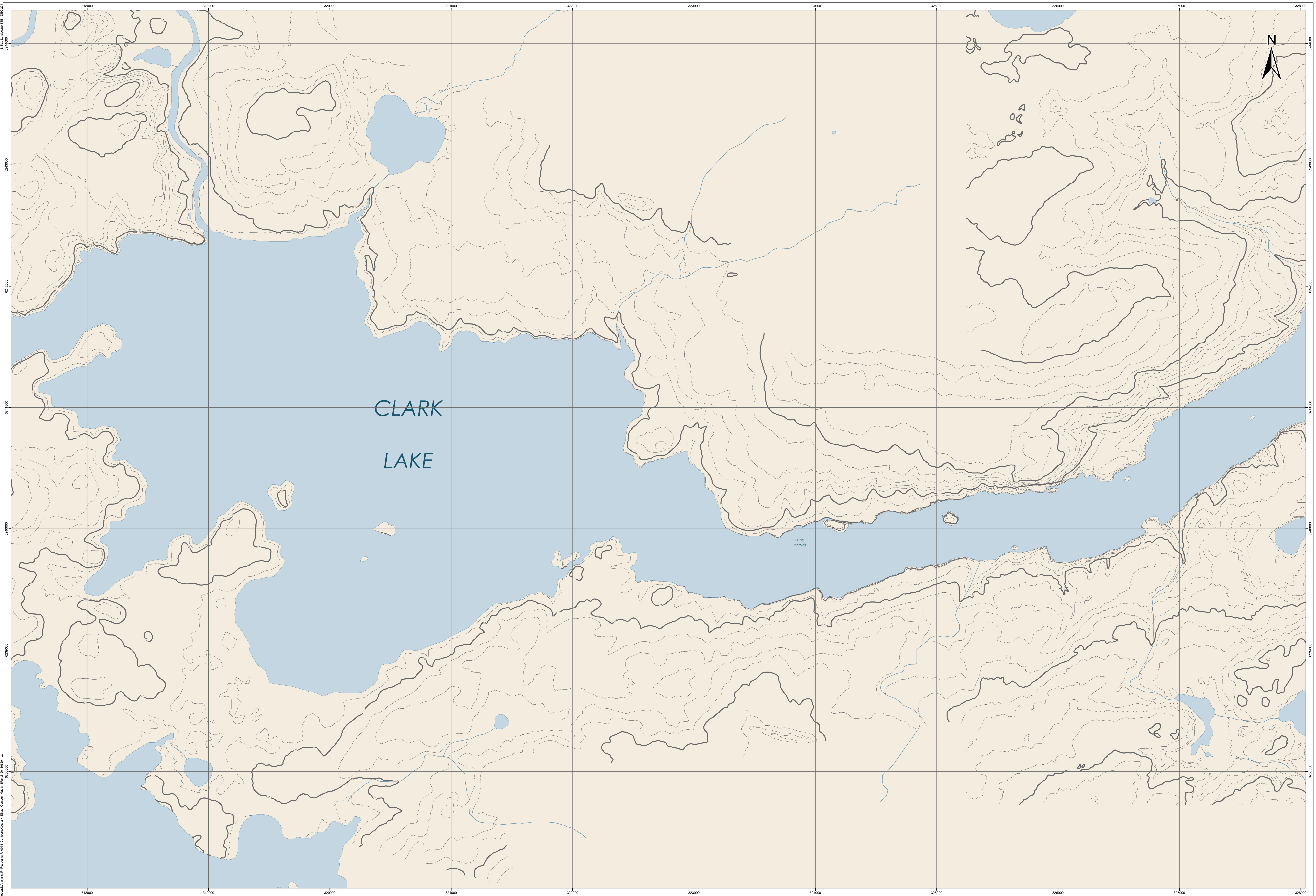


**Legend**

|                          |                                   |                      |   |                            |
|--------------------------|-----------------------------------|----------------------|---|----------------------------|
| 10 metre (e.g. 150, 160) | Approach and Discharge Channels   | Access Road          | Boat Launch   | Existing Water Area        |
| 5 metre (e.g. 145, 155)  | Principal Structures              | Proposed Access Road | Boat Launch Access Trail                            | Dewatered Area (Potential) |
| 2 metre (e.g. 152, 154)  | Supporting Infrastructure         | Portage Route        | Initial Flooded Area (159 m) - 95th Percentile Flow |                            |
| 1 metre (e.g. 151, 153)  | Borrow Area                       |                      |   |                            |
|                          | Excavated Material Placement Area |                      |   |                            |

**Keeyask Generation Project  
 Elevation Contours**

**MAP 7**



**DATA SOURCE:**  
 Manitoba Hydro; Government of Manitoba; Government of Canada;  
 Manitoba Hydro 2010 and 1986 to 2003 Topographic Contour  
 Composite

**CREATED BY:**  
 Manitoba Hydro - Hydro Power Planning - GIS & Special Studies

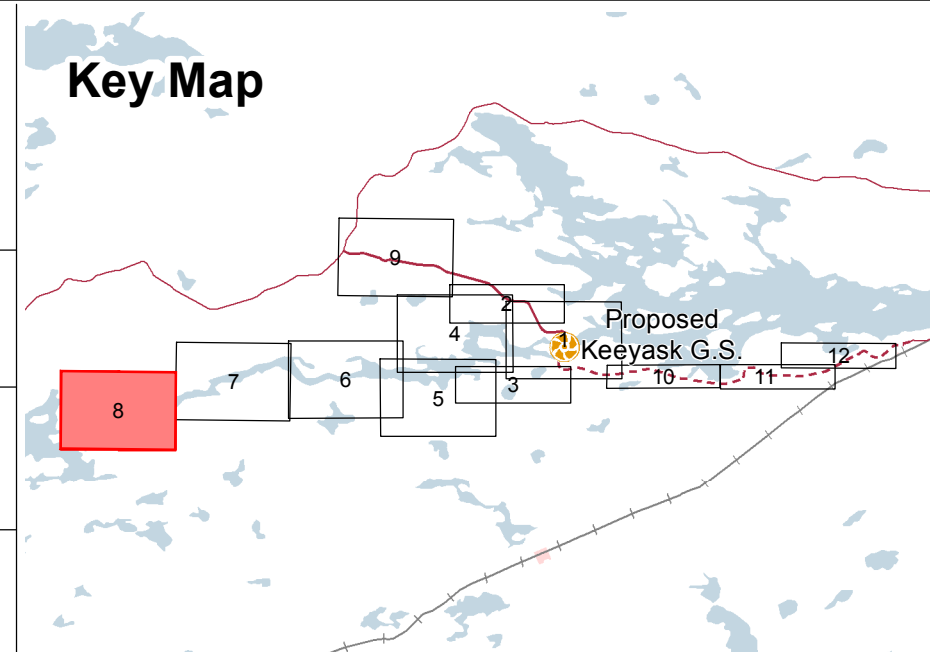
**COORDINATE SYSTEM:**  
 UTM NAD 1983 Z15N

**DATE CREATED:**  
 01-JUN-13

**REVISION DATE:**  
 21-JUN-13

**VERSION NO.:**  
 1.0

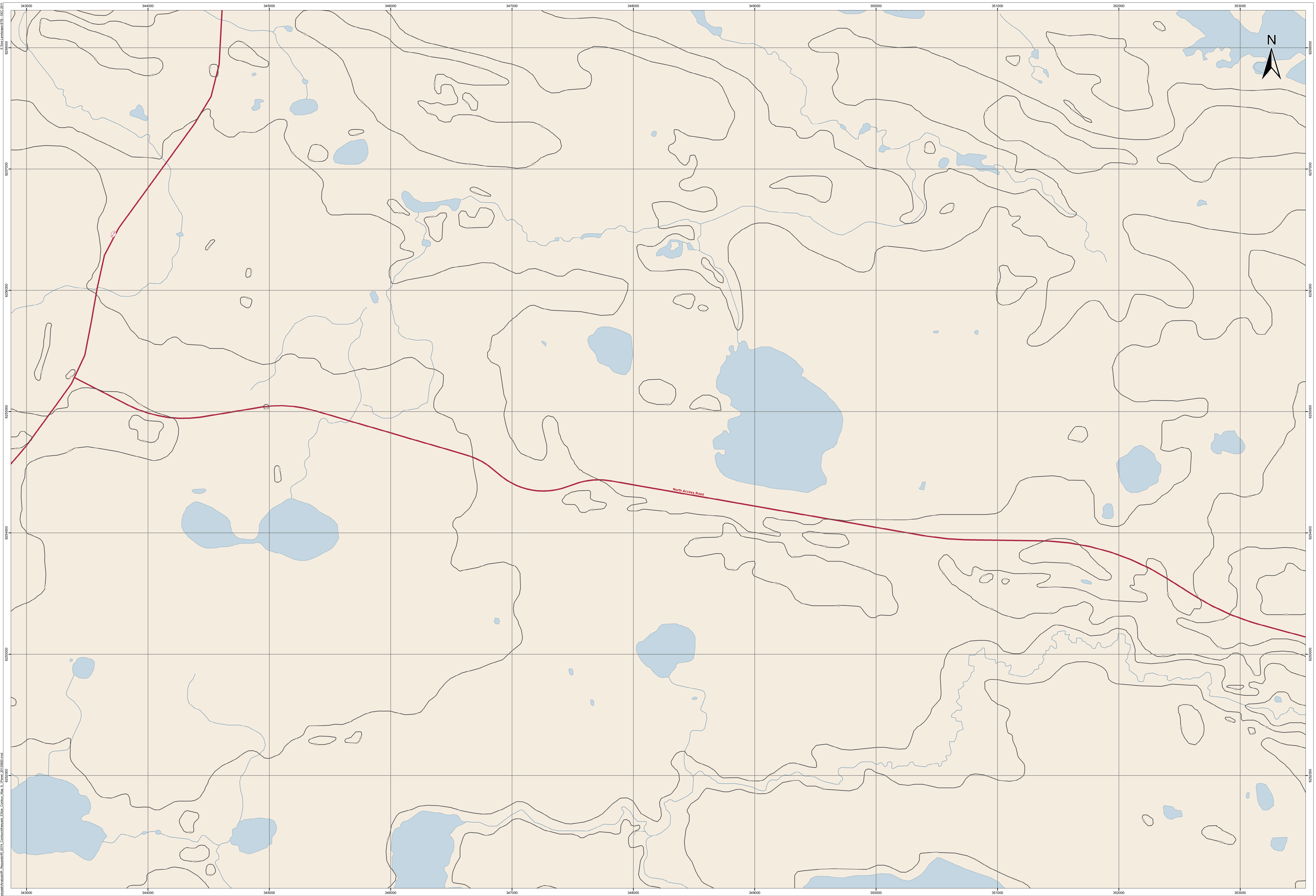
**QA/QC:**  
 APPROVED



| Legend                   |   |
|--------------------------|---|
| <b>Contour Elevation</b> |   |
| 10 metre (e.g. 150, 160) | Approach and Discharge Channels                     |
| 5 metre (e.g. 145, 155)  | Principal Structures                                |
| 2 metre (e.g. 152, 154)  | Supporting Infrastructure                           |
| 1 metre (e.g. 151, 153)  | Borrow Area   |
|                          | Excavated Material Placement Area                   |
|                          | Access Road   |
|                          | Proposed Access Road                                |
|                          | Boat Launch   |
|                          | Boat Launch Access Trail                            |
|                          | Portage Route                                       |
|                          | Existing Water Area                                 |
|                          | Dewatered Area (Potential)                          |
|                          | Initial Flooded Area (159 m) - 95th Percentile Flow |

## Keyyask Generation Project Elevation Contours

**MAP 8**



**DATA SOURCE:**  
Manitoba Hydro; Government of Manitoba; Government of Canada;  
NTS 50K Contours

**CREATED BY:**  
Manitoba Hydro - Hydro Power Planning - GIS & Special Studies

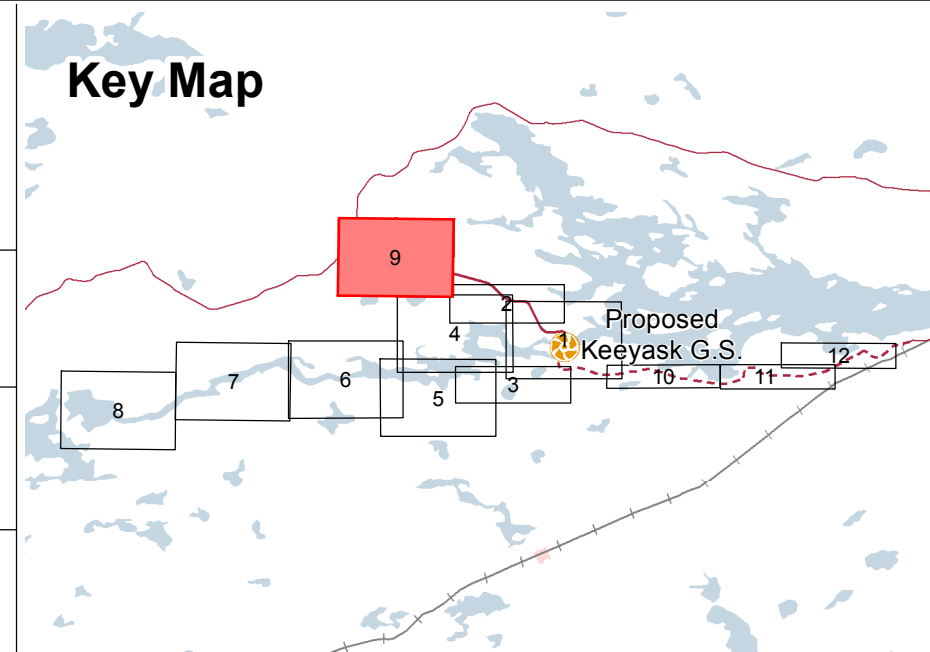
**COORDINATE SYSTEM:**  
UTM NAD 1983 Z15N

**DATE CREATED:**  
01-JUN-13

**REVISION DATE:**  
24-JUN-13

**VERSION NO.:**  
1.0

**QA/QC:**  
APPROVED



**Legend**

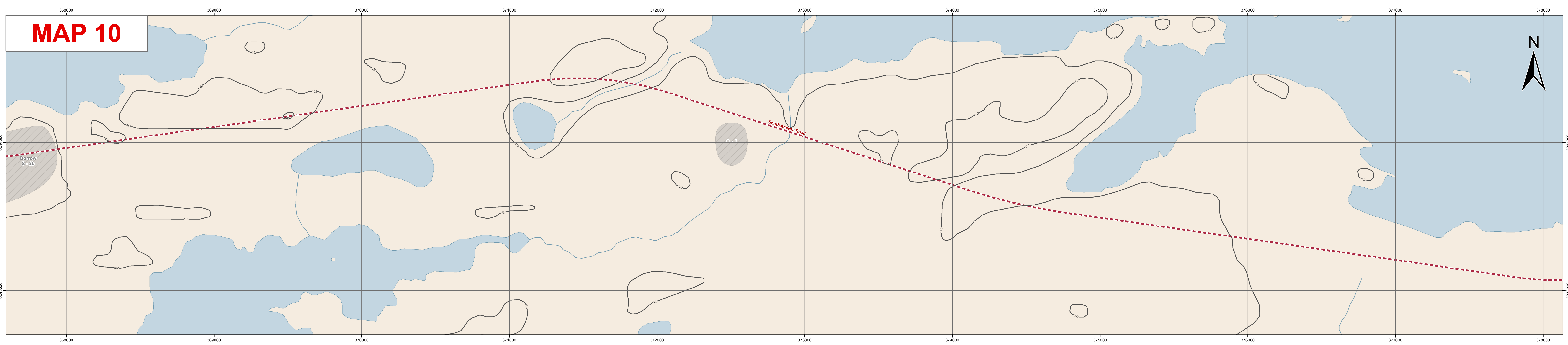
|                                   |                                 |                          |                            |   |
|-----------------------------------|---------------------------------|--------------------------|----------------------------|---|
| NTS 50K Elevation Contour (m)     | Approach and Discharge Channels | Access Road              | Boat Launch                | Existing Water Area                                 |
| Principal Structures              | Proposed Access Road            | Boat Launch Access Trail | Dewatered Area (Potential) | Initial Flooded Area (159 m) - 95th Percentile Flow |
| Supporting Infrastructure         | Borrow Area                     | Portage Route            |                            |   |
| Excavated Material Placement Area |                                 |                          |                            |   |

## Keeyask Generation Project Elevation Contours

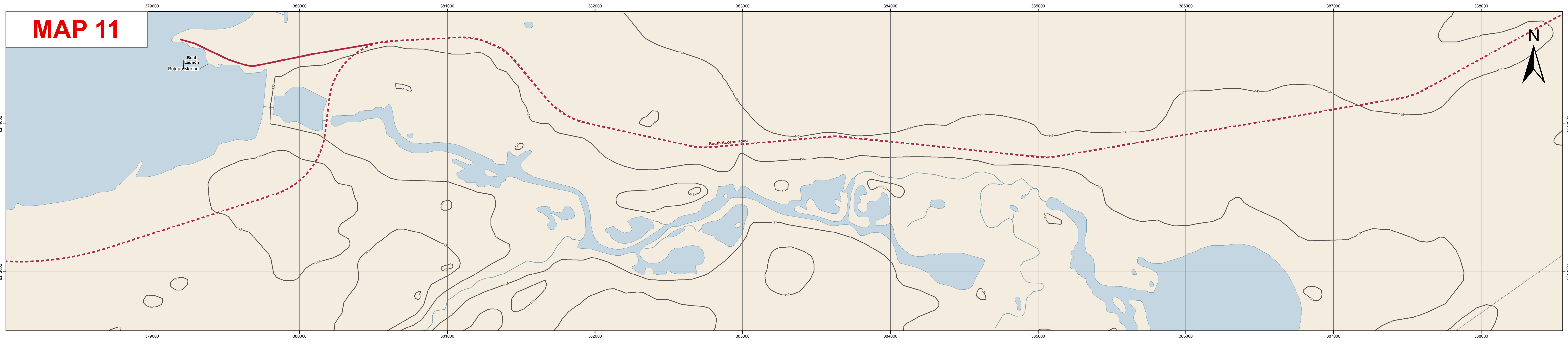
**MAP 9**



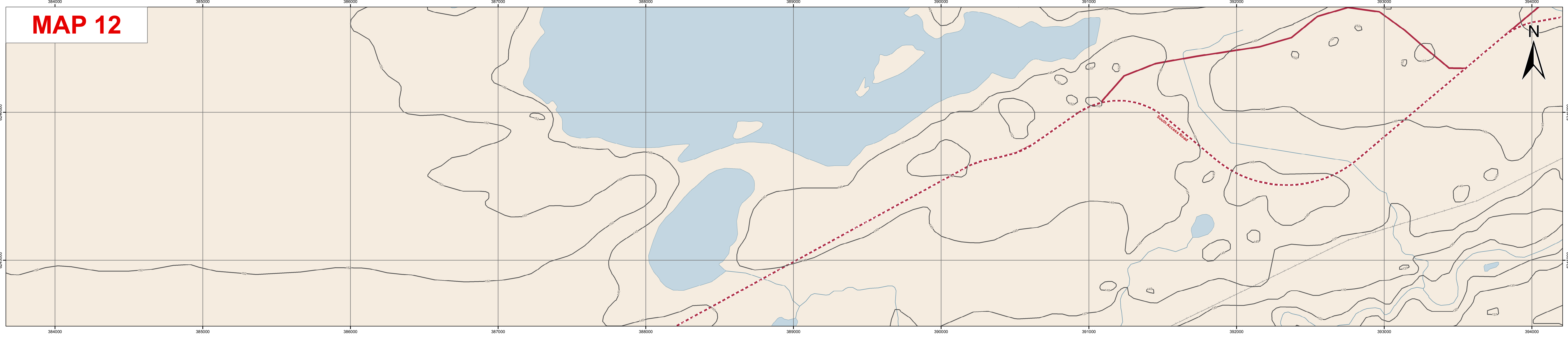
384000



384000



384000



**DATA SOURCE:**  
Manitoba Hydro; Government of Manitoba; Government of Canada;  
NTS 50K Contours

**CREATED BY:**  
Manitoba Hydro - Hydro Power Planning - GIS & Special Studies

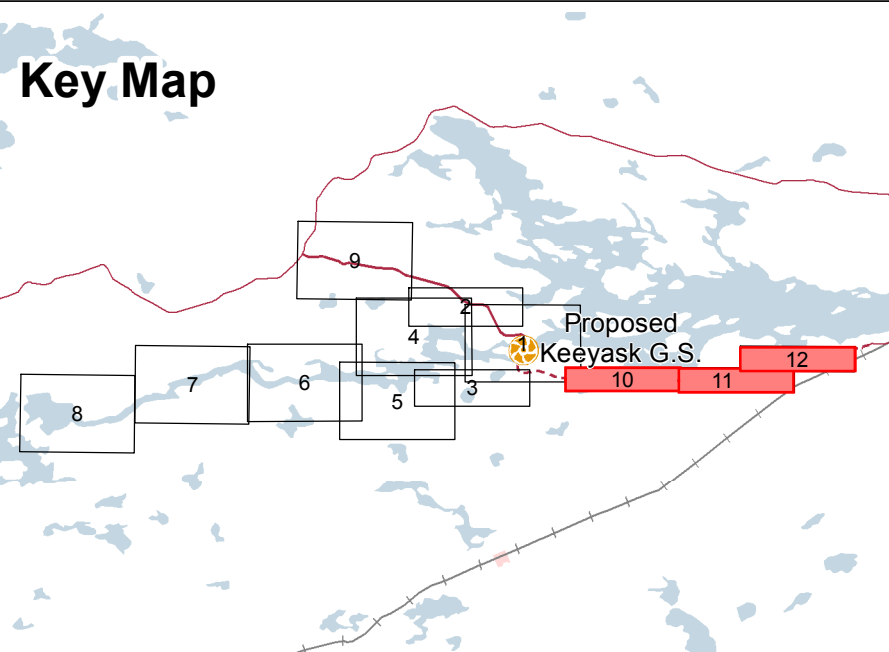
**COORDINATE SYSTEM:**  
UTM NAD 1983 Z15N

**DATE CREATED:**  
01-JUN-13

**REVISION DATE:**  
24-JUN-13

**VERSION NO.:**  
1.0

**QA/QC:**  
APPROVED



**Legend**

- NTS 50K Elevation Contour (m)
- Approach and Discharge Channels
- Existing Butnau Road
- Boat Launch
- Existing Water Area
- Principal Structure
- Proposed Access Road
- Boat Launch Access Trail
- Dewatered Area (Potential)
- Supporting Infrastructure
- Portage Route
- Initial Flooded Area (159 m) - 95th Percentile
- Borrow Area
- Excavated Material Placement Area

**Keeyask Generation Project  
Elevation Contours**

**MAP 10, 11, 12**