



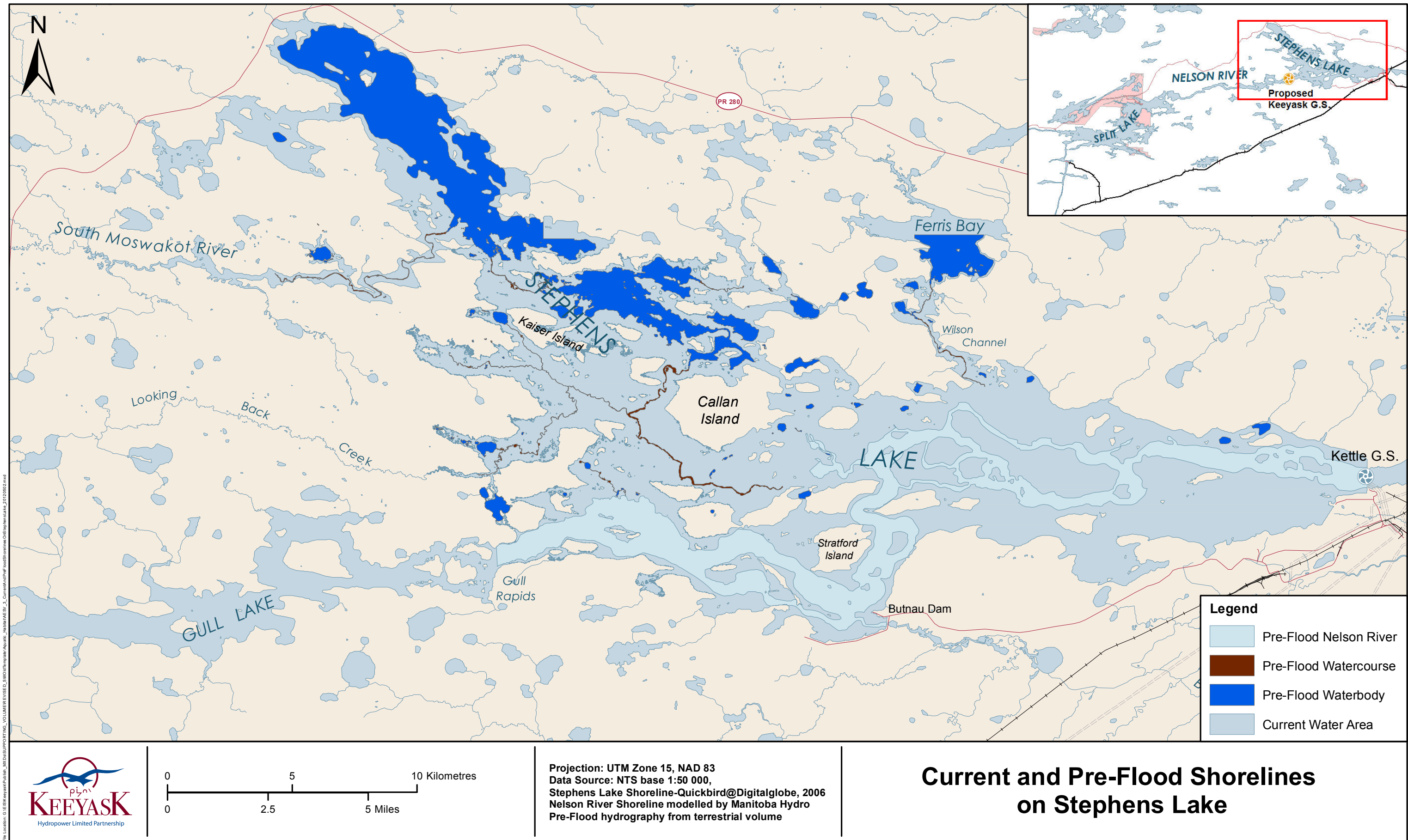
Keeyask Generation Project

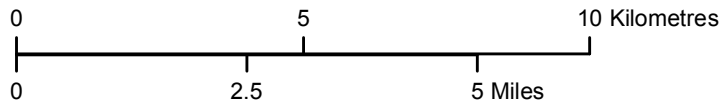
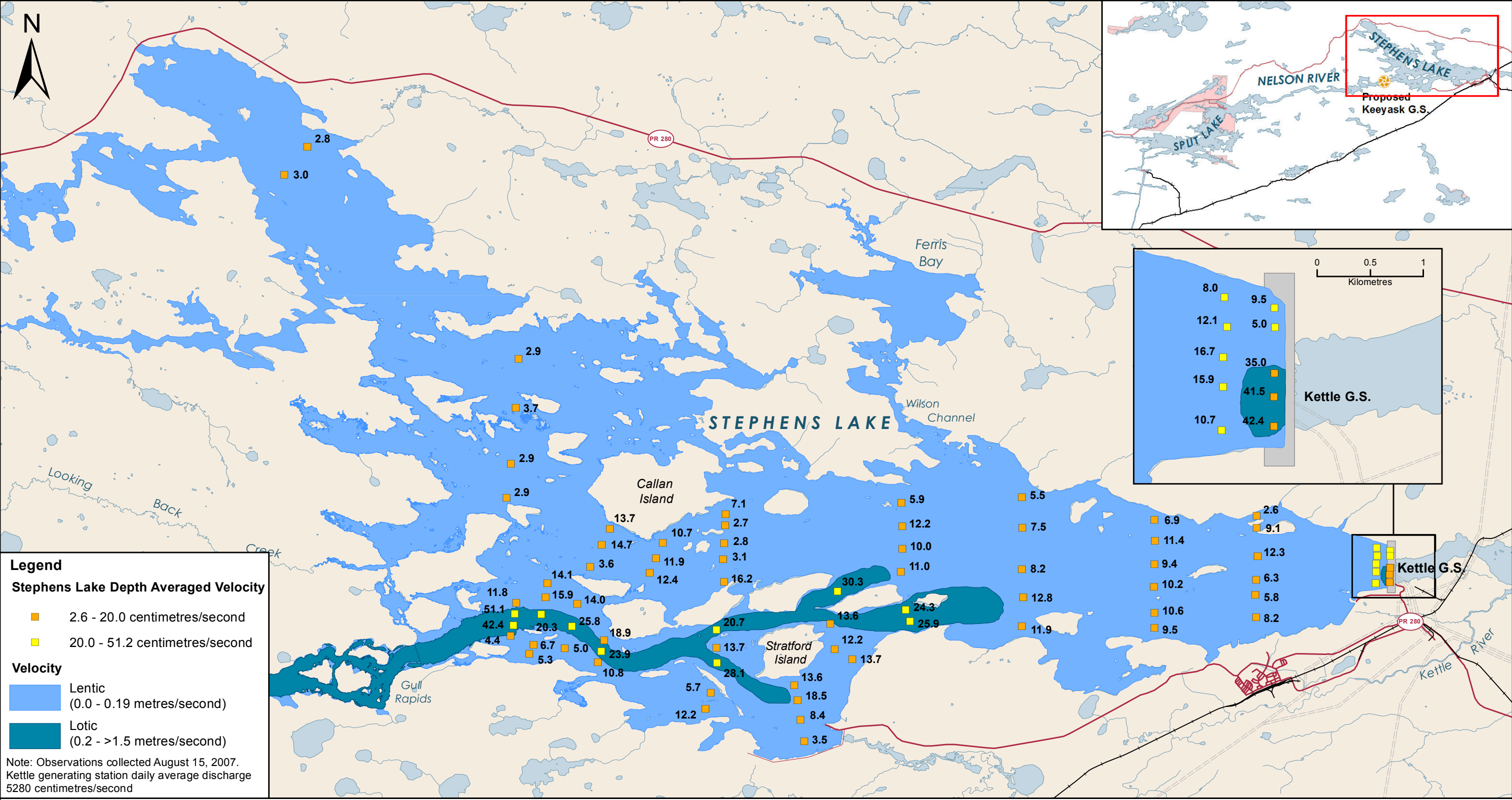
Environmental Impact Statement

Supporting Volume

Aquatic Environment

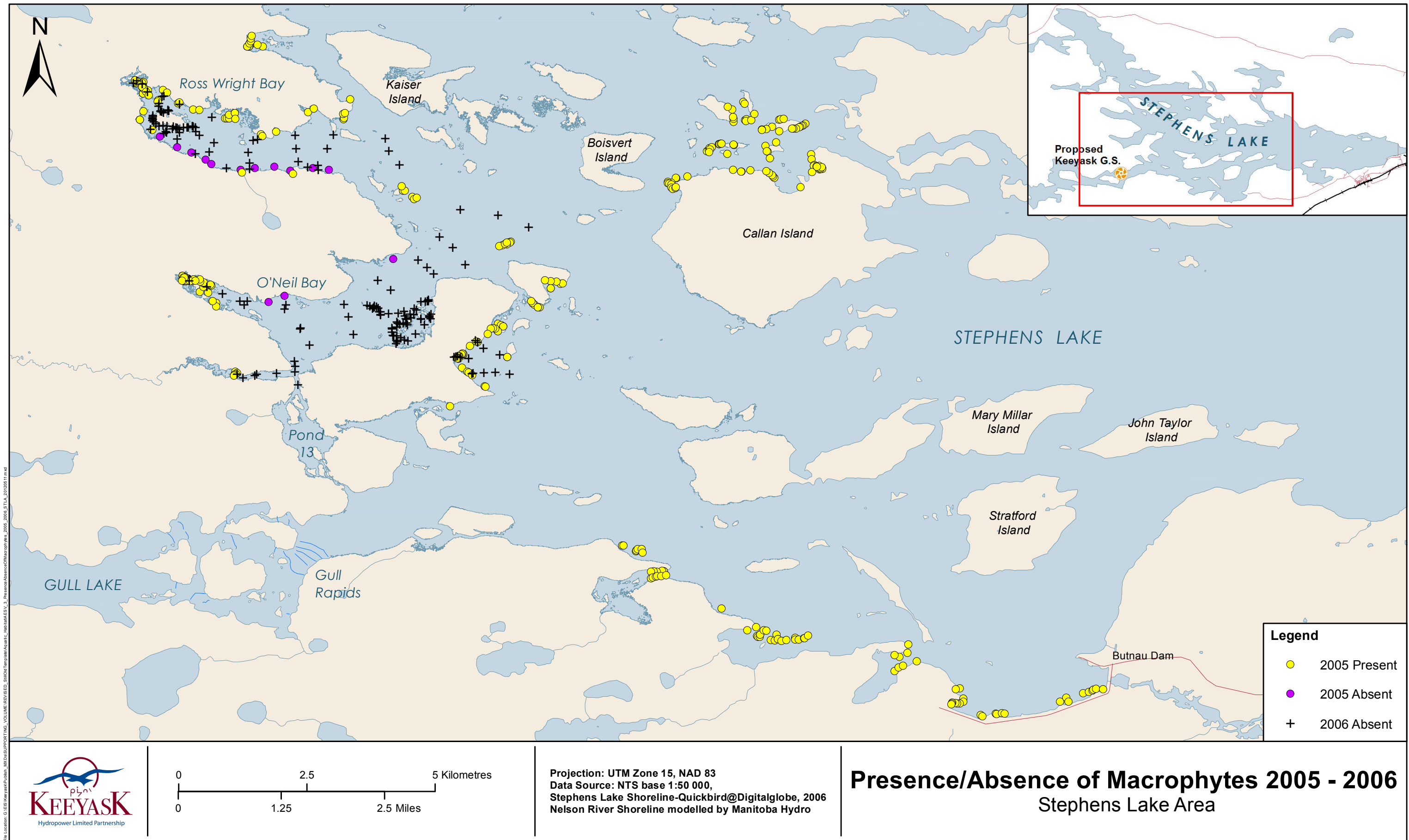


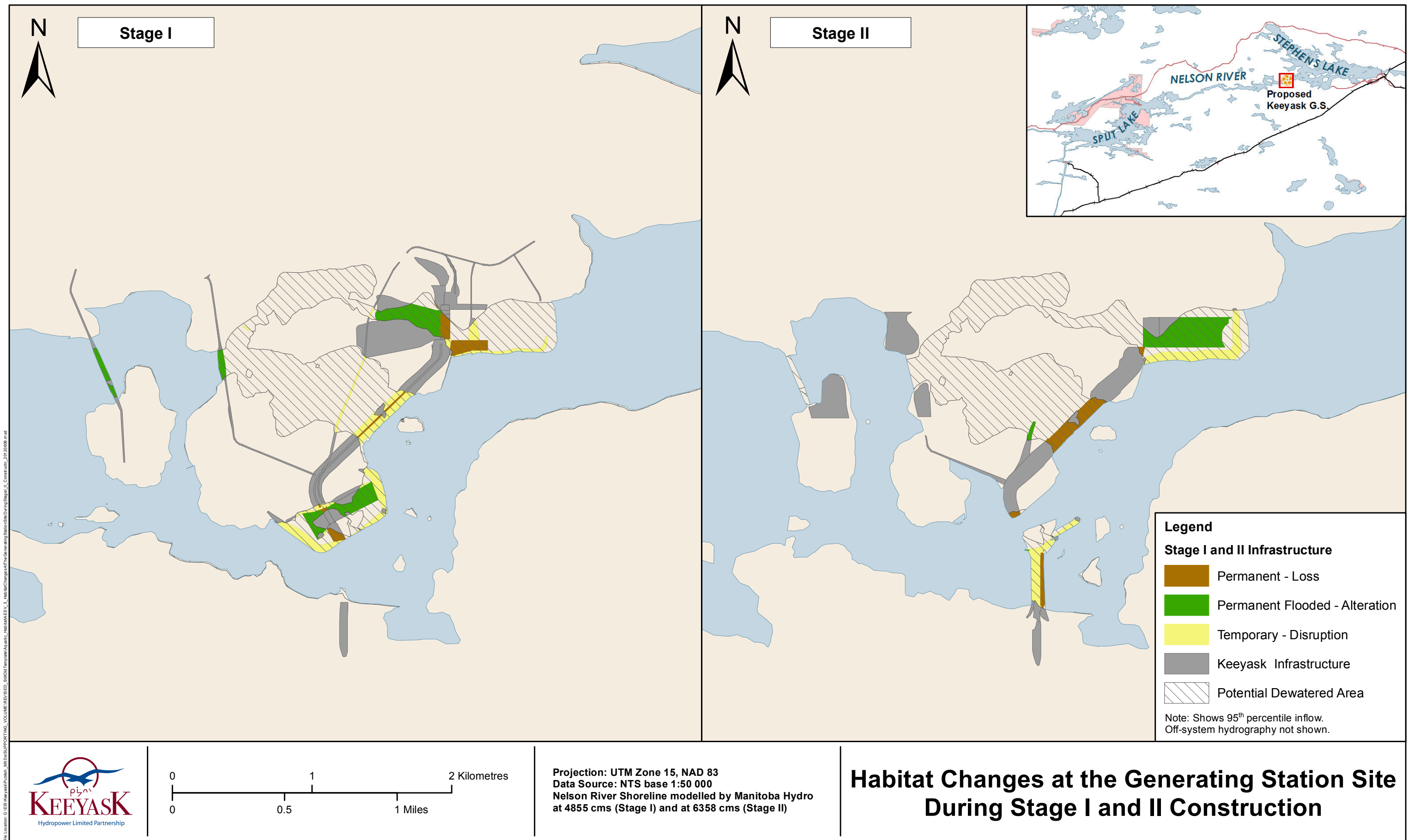


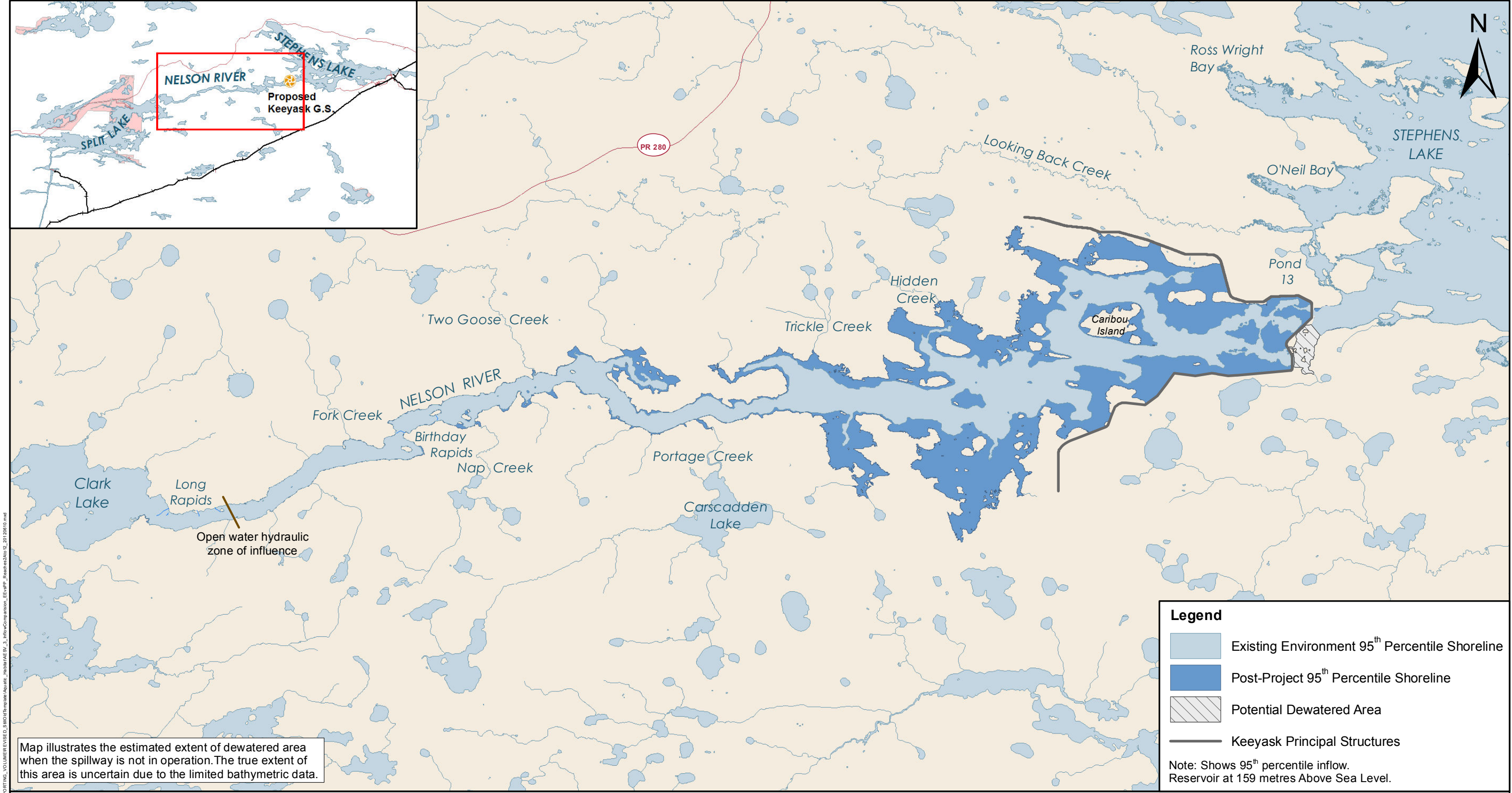


Projection: UTM Zone 15, NAD 83
Data Source: NTS base 1:50 000,
Stephens Lake Shoreline-Quickbird@Digitalglobe, 2006
Nelson River Shoreline modelled by Manitoba Hydro

Lentic and Lotic Habitat Stephens Lake Area







Map illustrates the estimated extent of dewatered area when the spillway is not in operation. The true extent of this area is uncertain due to the limited bathymetric data.

Legend


Existing Environment 95th Percentile Shoreline

Post-Project 95th Percentile Shoreline

Potential Dewatered Area

Keeyask Principal Structures

Note: Shows 95th percentile inflow.
Reservoir at 159 metres Above Sea Level.



02.57.00

0

2.5

5

7.5

10 Kilometres

0

1.25

2.5

3.75

5 Miles

Projection: UTM Zone 15, NAD 83

Data Source: NTS base 1:50 000

Stephens Lake Shoreline - Quickbird@Digitalglobe, 2006

Nelson River Shoreline modelled by Manitoba Hydro.

Extents of dewatered area are estimated based on the existing environment 95th percentile flow.

Inflow Comparison

Existing Environment versus Post-Project

Reaches 2A to 12