



# Keeyask Generation Project

## Environmental Impact Statement

### Supporting Volume

# Project Description



June 2012



Artist's Rendering - Concept Only



DATA SOURCE: Manitoba Hydro Artist Concept Rendering - September 2011		
CREATED BY: Manitoba Hydro - Hydro Power Planning - GIS & Special Studies		
NOTE(S): Artist's Rendering - Concept Only	DATE CREATED: 03-SEP-11	REVISION DATE: 11-APR-12
	VERSION NO: 2.0	QA/QC: APPROVED

Note:  
Map illustrates the estimated extent of the dewatered area when the spillway is not in operation. The true extent of this area is uncertain due to the limited bathymetric data

## Powerhouse Complex

Figure 1-2



Artist's Rendering - Concept Only



DATA SOURCE: Manitoba Hydro Artist Concept Rendering - September 2011		
CREATED BY: Manitoba Hydro - Hydro Power Planning - GIS & Special Studies		
NOTE(S): Artist's Rendering - Concept Only	DATE CREATED: 04-SEP-11	REVISION DATE: 11-APR-12
	VERSION NO: 2.0	QA/QC: APPROVED

**Spillway**

Figure 1-3



B:\Data\LandUse\RTB - SEC 2011  
 E:\Location\W\Waterhouse - Other\Plan\Plan\_Supply\Project\Waterhouse\MapInfo\Drawings\Engineering\Layout\Layout\_20110203.mxd

Artist's Rendering - Concept Only



<b>DATA SOURCE:</b> Manitoba Hydro Artist Concept Rendering - November 2011		
<b>CREATED BY:</b> Manitoba Hydro - Hydro Power Planning - GIS & Special Studies		
<b>NOTE(S):</b> Artist's Rendering - Concept Only	<b>DATE CREATED:</b> 03-AUG-11	<b>REVISION DATE:</b> 13-FEB-12
	<b>VERSION NO:</b> 1.0	<b>QA/QC:</b> APPROVED

Note:  
Estimated extent of dewatered area when the spillway is not in operation. The exact extents of this area are uncertain due to the limited bathymetric data in the area.

## General Arrangement Looking North

Figure 1-4



B:\Data\Manitoba Hydro\Projects\Keeyask\GIS\Map\_Series\Map\_Series\_03-SEP-11.mxd  
 B:\Data\Manitoba Hydro\Projects\Keeyask\GIS\Map\_Series\Map\_Series\_13-FEB-12.mxd  
 B:\Data\Manitoba Hydro\Projects\Keeyask\GIS\Map\_Series\Map\_Series\_13-FEB-12.mxd

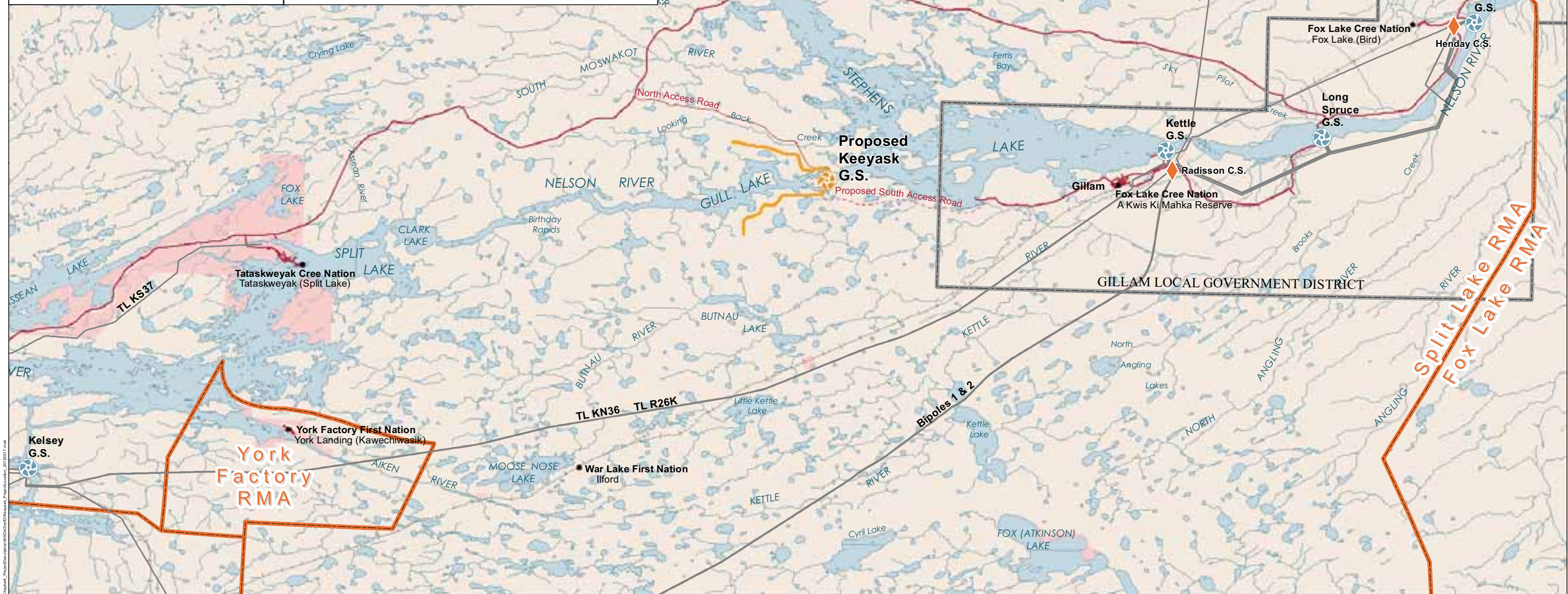
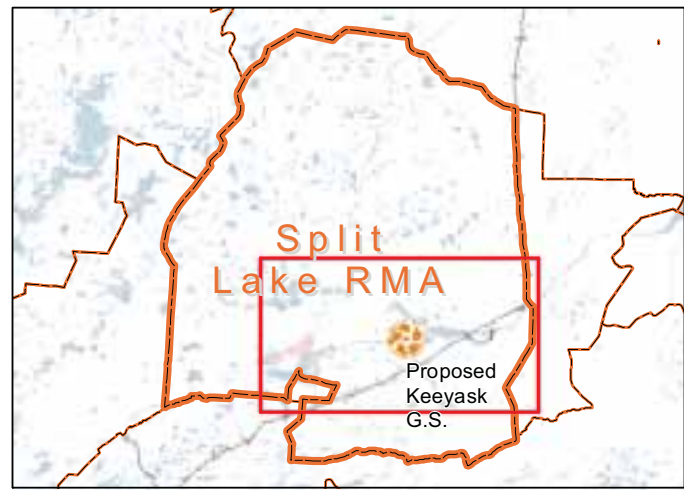


DATA SOURCE: Manitoba Hydro Artist Concept Rendering - September 2011		
CREATED BY: Manitoba Hydro - Hydro Power Planning - GIS & Special Studies		
NOTE(S): Artist's Rendering - Concept Only	DATE CREATED: 03-SEP-11	REVISION DATE: 13-FEB-12
	VERSION NO: 1.0	QA/QC: APPROVED

Note:  
 Estimated extent of dewatered area when the spillway is not in operation. The exact extents of this area are uncertain due to the limited bathymetric data in the area.

## General Arrangement Looking Upstream

Figure 1-5

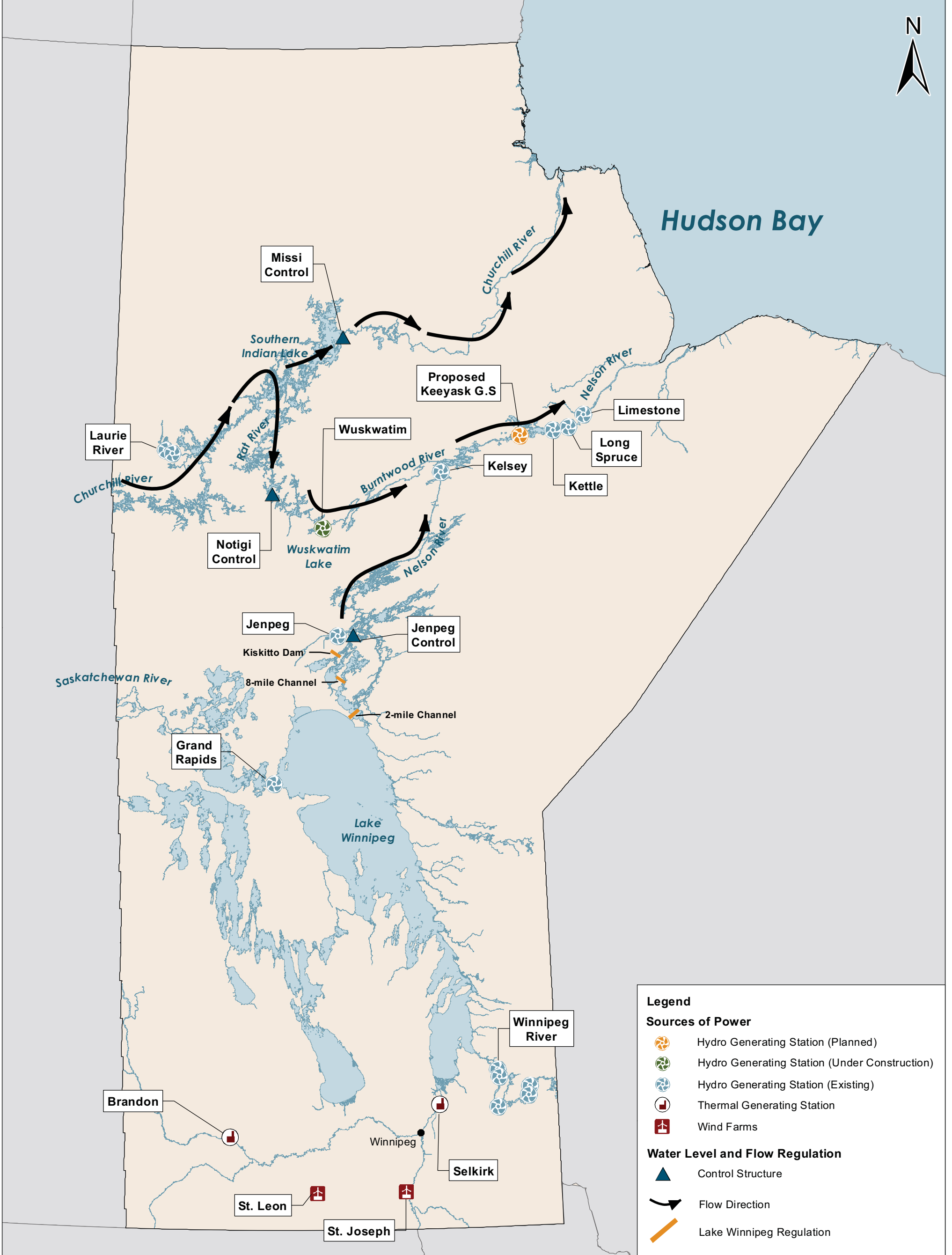



<b>DATA SOURCE:</b> Manitoba Hydro; Government of Manitoba; Government of Canada		
<b>CREATED BY:</b> Manitoba Hydro - Hydro Power Planning - GIS & Special Studies		
<b>COORDINATE SYSTEM:</b> UTM NAD 1983 Z15N	<b>DATE CREATED:</b> 03-AUG-11	<b>REVISION DATE:</b> 18-JUN-12
<b>VERSION NO:</b> 2.0	<b>QA/QC:</b> APPROVED	

**Legend**

- Generating Station (Planned)
- Generating Station (Existing)
- Converter Station
- Keeyask Principal Structures
- Highway
- Access Road
- Proposed Access Road
- Rail
- Transmission Line
- First Nation Reserve
- Local Government District
- Resource Management Area

**Project Location**

**DATA SOURCE:**  
Manitoba Hydro, NTS (Government of Canada)






**CREATED BY:**  
Stantec Consulting Ltd.

<b>COORDINATE SYSTEM:</b> UTM NAD 1983 Z14N	<b>DATE CREATED:</b> 15-JAN-10	<b>REVISION DATE:</b> 25-JUN-12
0 40 80 Kilometres	<b>VERSION NO.:</b> 1.0	<b>QA/QC:</b> APPROVED
0 30 60 Miles		

# Sources of Power Generated in Manitoba



**Legend**

-  Generating Station (Planned)
- Transmission Lines (Existing)**
-  +/- 500 kV HVDC Line
-  230 kV Line
-  138 kV Line
-  115 kV Line



DATA SOURCE: Manitoba Hydro, NTS (Government of Manitoba)		
CREATED BY: Stantec Consultants		
COORDINATE SYSTEM: UTM NAD 1983 Z14N	DATE CREATED: 15-JAN-10	REVISION DATE: 26-JUN-12
0 30 60 Kilometres	VERSION NO: 1.0	QA/QC: APPROVED
0 25 50 Miles		

## Manitoba Hydro Existing Transmission Line Network