



# Keeyask Generation Project

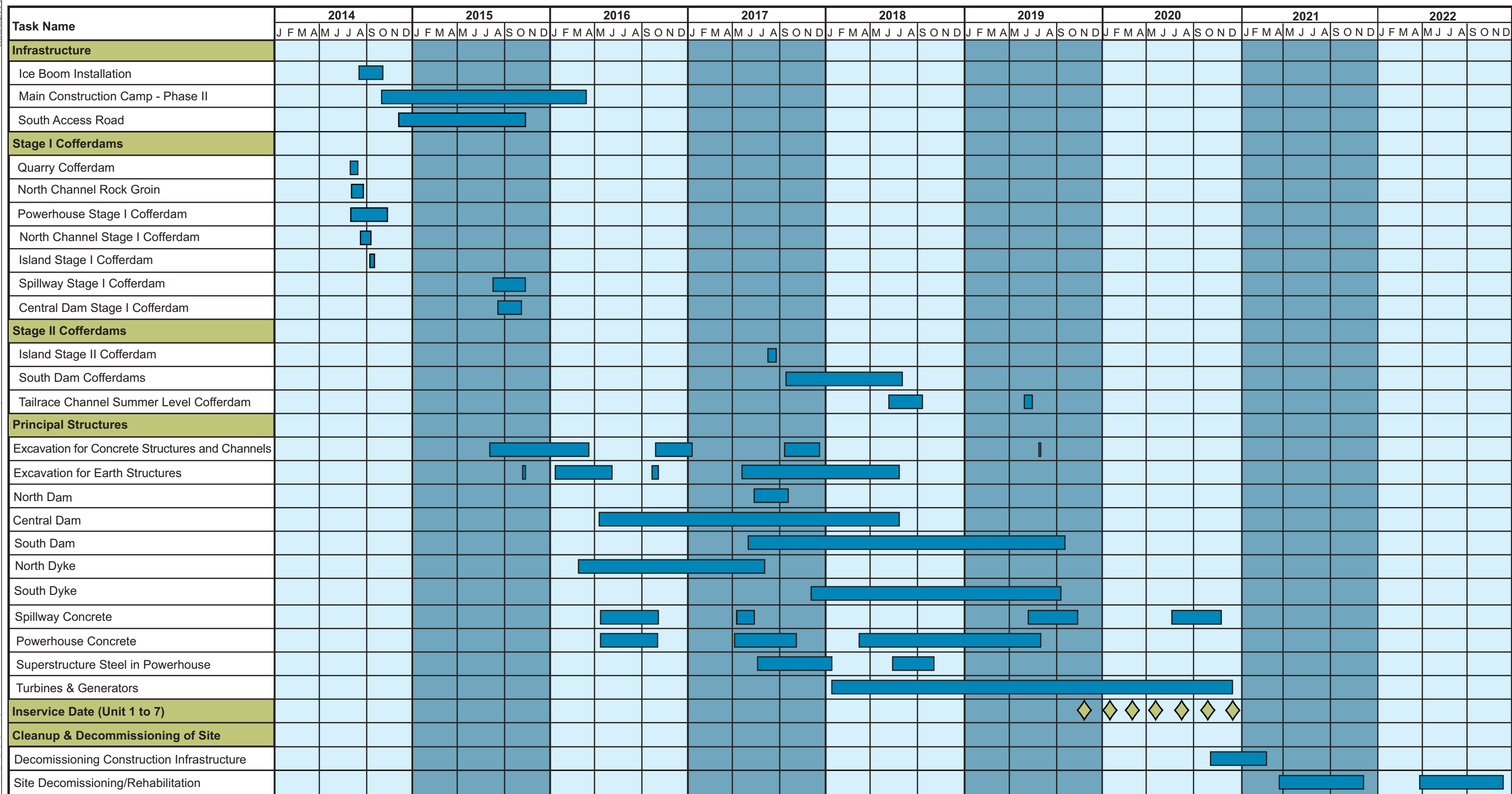
## Environmental Impact Statement

### Supporting Volume

## Project Description



June 2012



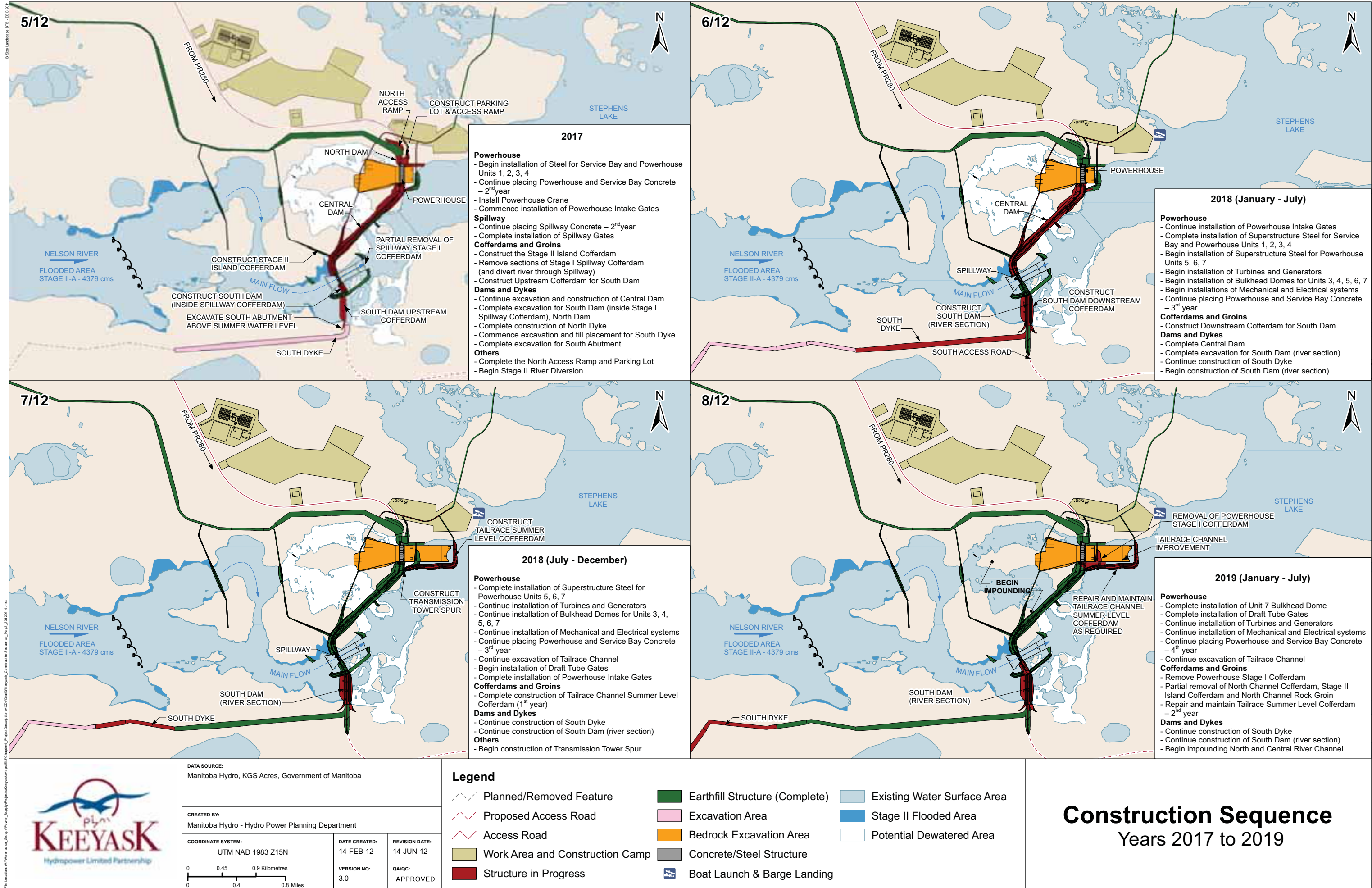
	<b>DATA SOURCE:</b> Manitoba Hydro Preliminary Construction Schedule. Latest version April 5,2012		<b>Legend</b>  Task <span style="display: inline-block; width: 30px; height: 10px; background-color: #0070C0; border: 1px solid black;"></span>  Milestone <span style="display: inline-block; width: 0; height: 0; border-left: 5px solid transparent; border-right: 5px solid transparent; border-bottom: 8px solid #808000;"></span>	<h1 style="margin: 0;">Preliminary Construction Schedule</h1>
	<b>CREATED BY:</b> Manitoba Hydro - Hydro Power Planning - Stantec Consultants			
	<b>Note(s):</b>	<b>DATE CREATED:</b> 16-APR-12		

### Figure 3-1









DATA SOURCE:  
Manitoba Hydro, KGS Acres, Government of Manitoba

CREATED BY:  
Manitoba Hydro - Hydro Power Planning Department

COORDINATE SYSTEM:  
UTM NAD 1983 Z15N

DATE CREATED:  
14-FEB-12

REVISION DATE:  
14-JUN-12

VERSION NO:  
3.0

QA/QC:  
APPROVED

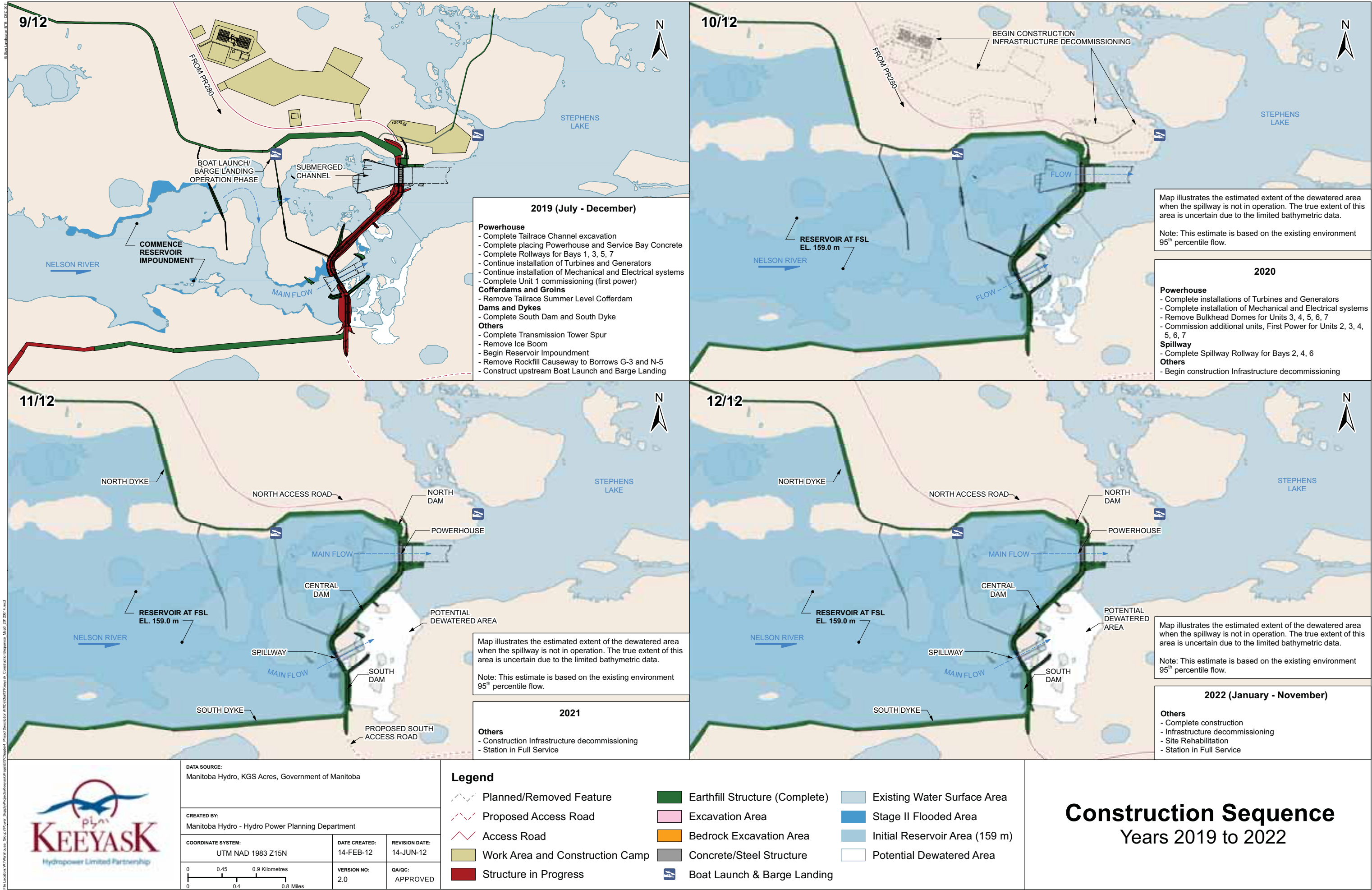
**Legend**

- Planned/Removed Feature
- Proposed Access Road
- Access Road
- Work Area and Construction Camp
- Structure in Progress
- Earthfill Structure (Complete)
- Excavation Area
- Bedrock Excavation Area
- Concrete/Steel Structure
- Boat Launch & Barge Landing
- Existing Water Surface Area
- Stage II Flooded Area
- Potential Dewatered Area

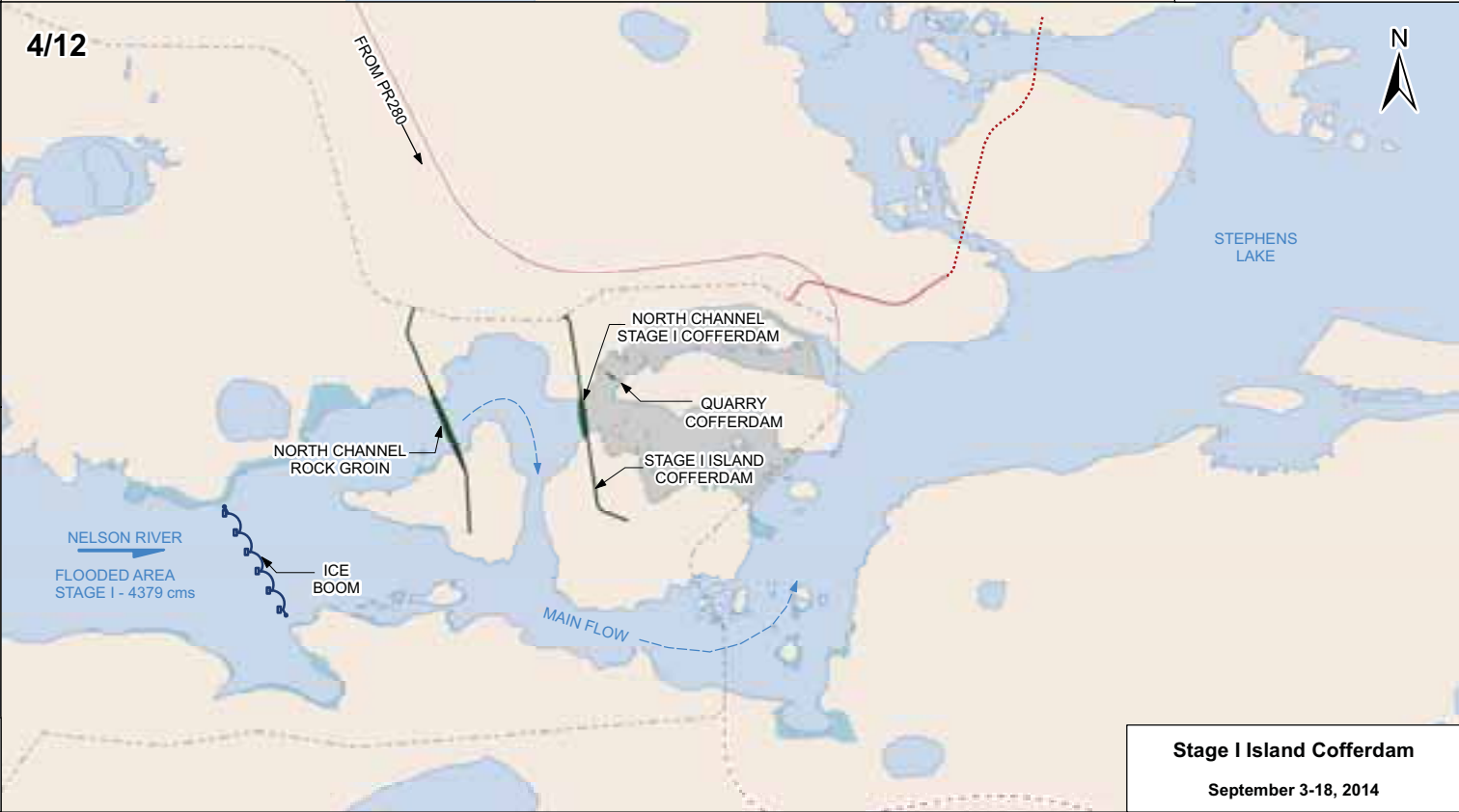
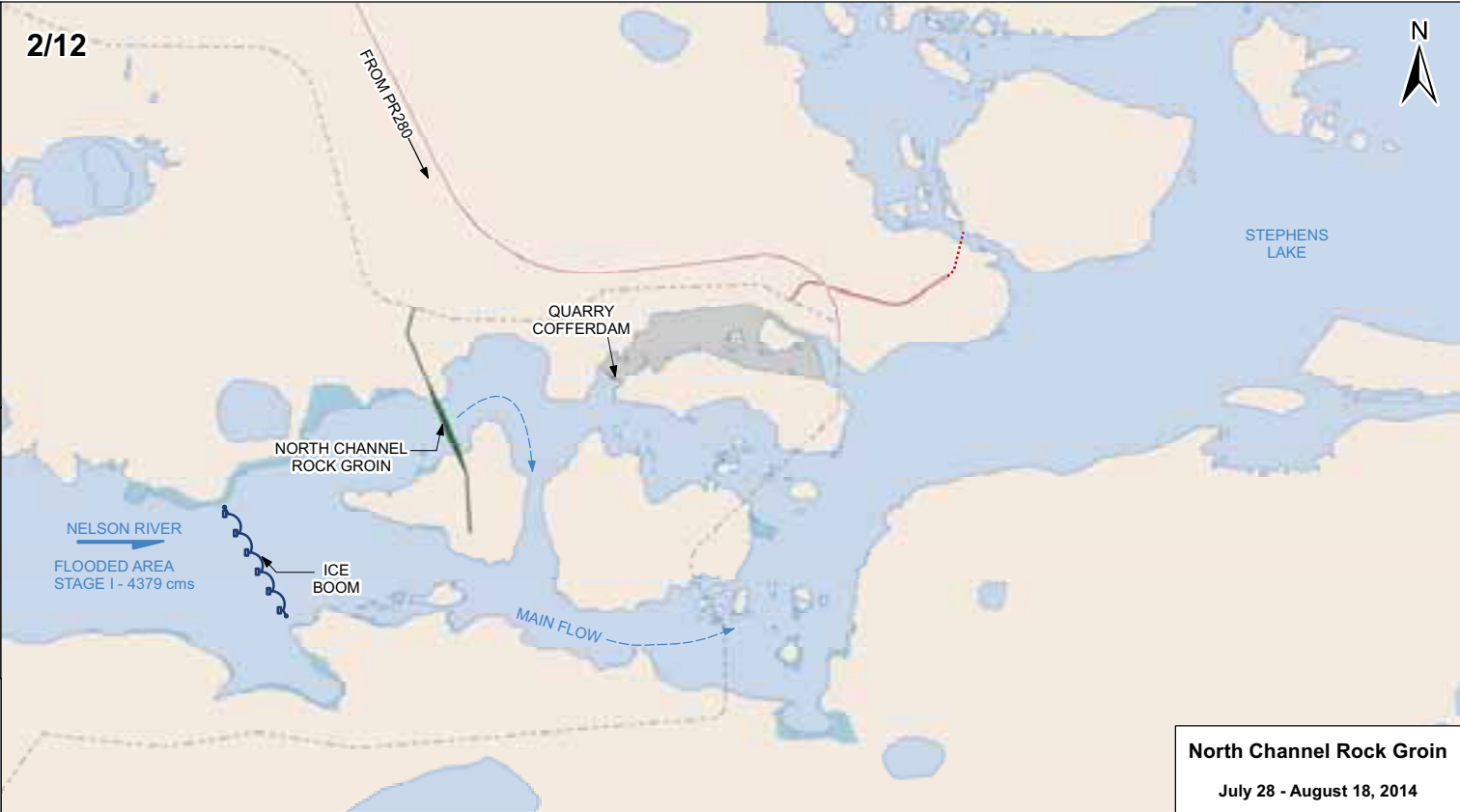
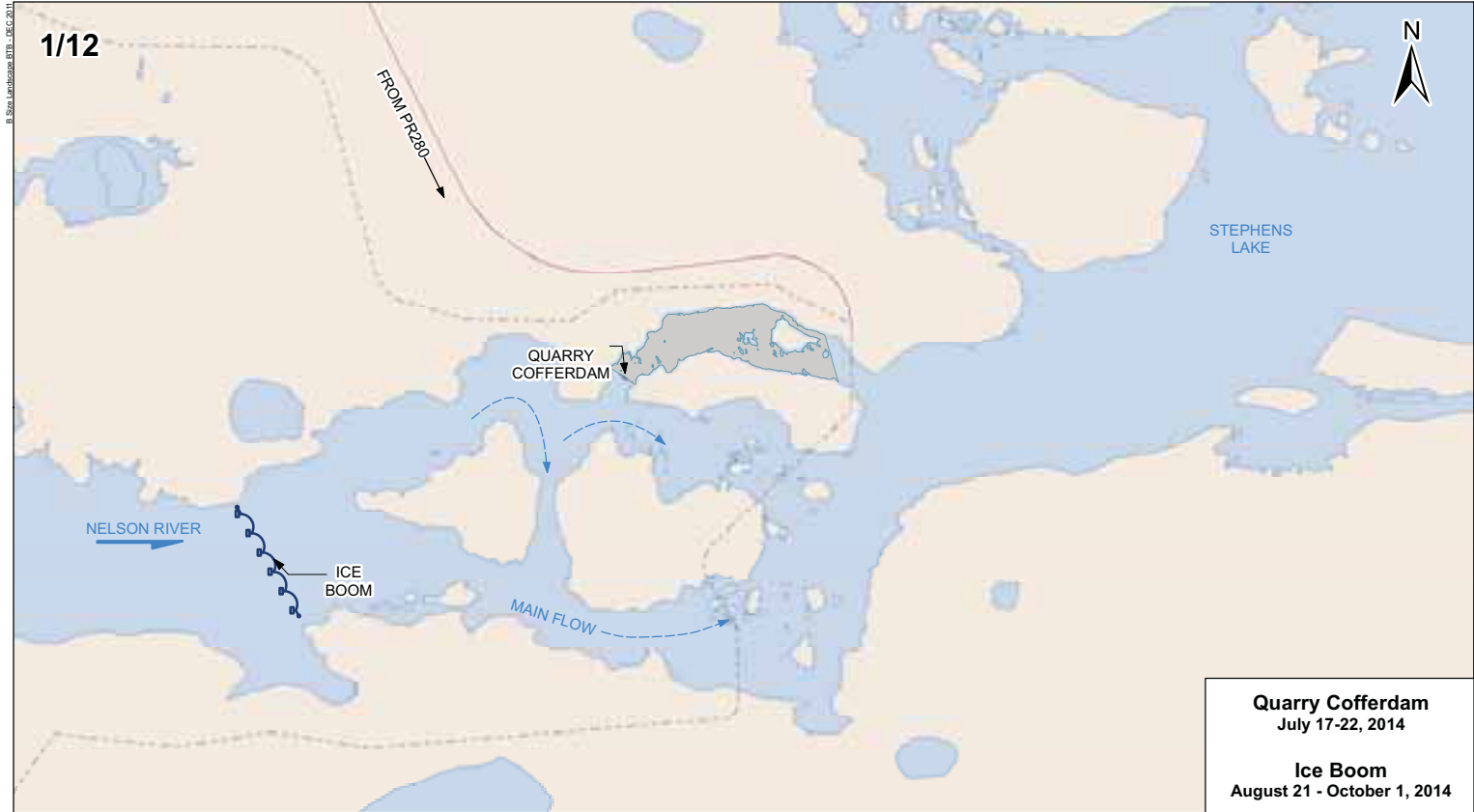
# Construction Sequence

## Years 2017 to 2019





8.5m Landscape 875 - DEC 2014



DATA SOURCE: Manitoba Hydro, KGS Acres, Government of Manitoba		
CREATED BY: Manitoba Hydro - Hydro Power Planning Department		
COORDINATE SYSTEM: UTM NAD 1983 Z15N	DATE CREATED: 14-FEB-12	REVISION DATE: 14-JUN-12
0 0.45 0.9 Kilometres 0 0.4 0.8 Miles	VERSION NO: 3.0	QA/QC: APPROVED

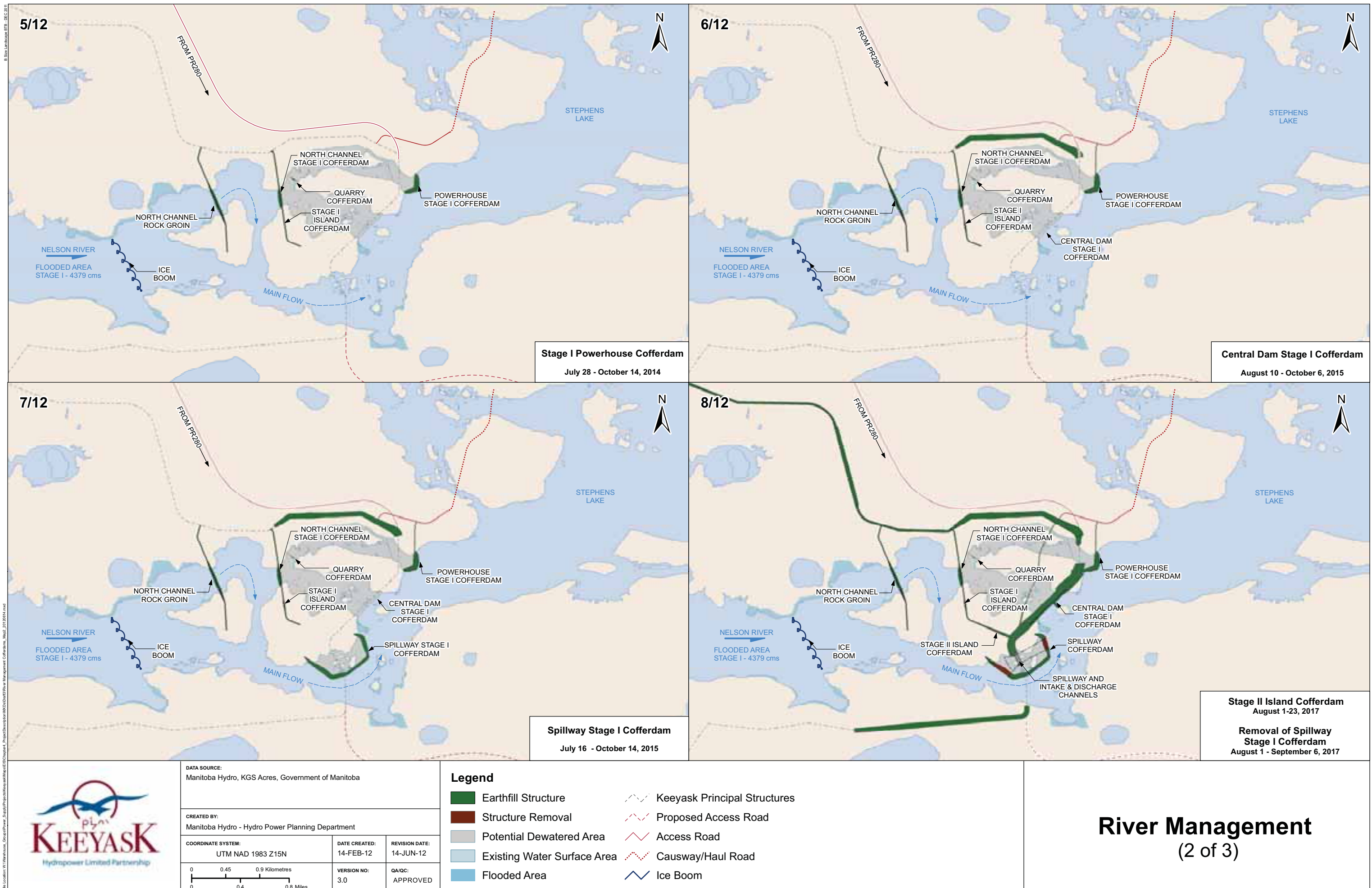
**Legend**

Earthfill Structure	Proposed Access Road
Potential Dewatered Area	Access Road
Existing Water Surface Area	Causway/Haul Road
Flooded Area	Ice Boom
Keeyask Principal Structures	

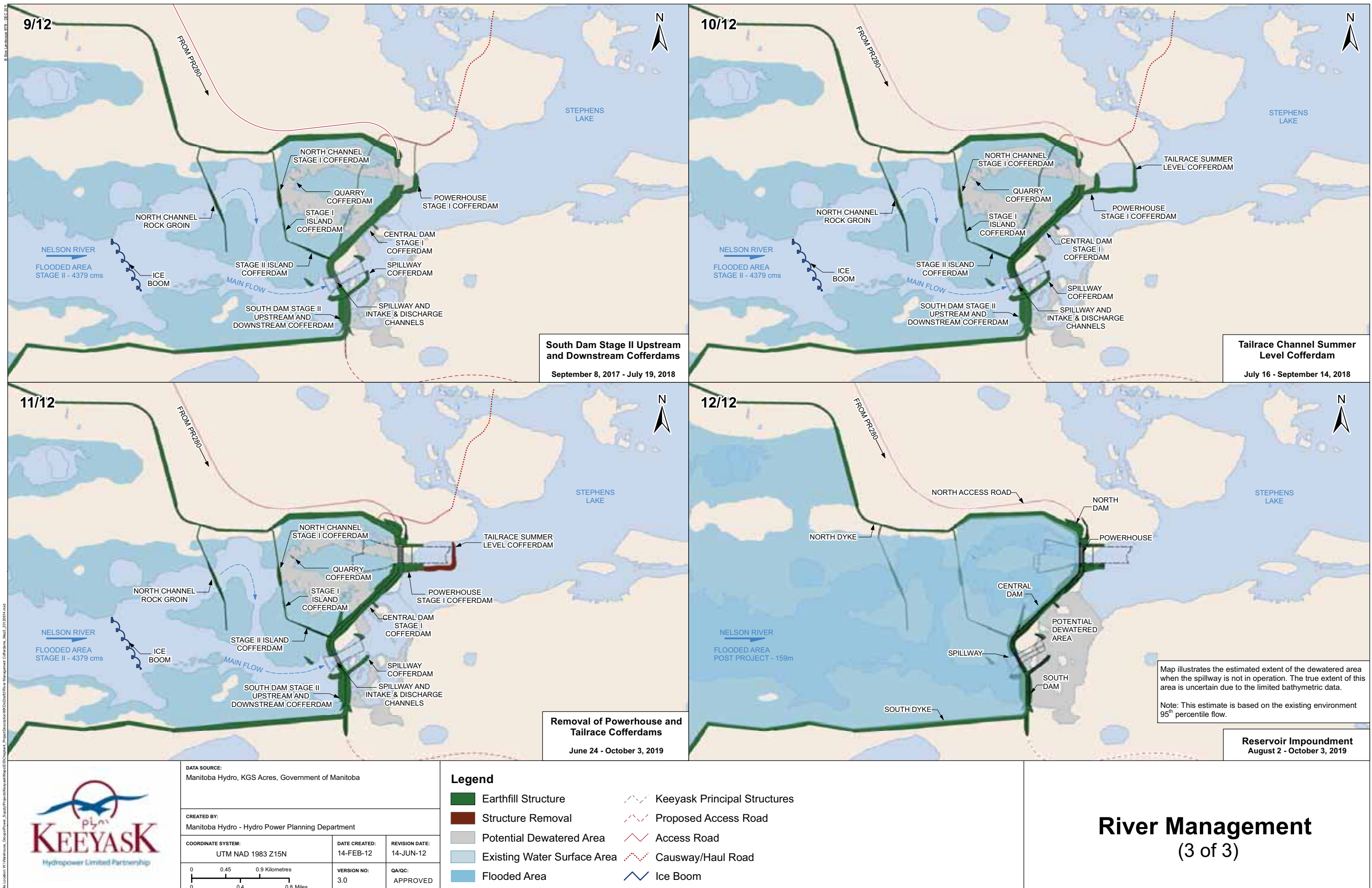
# River Management

(1 of 3)



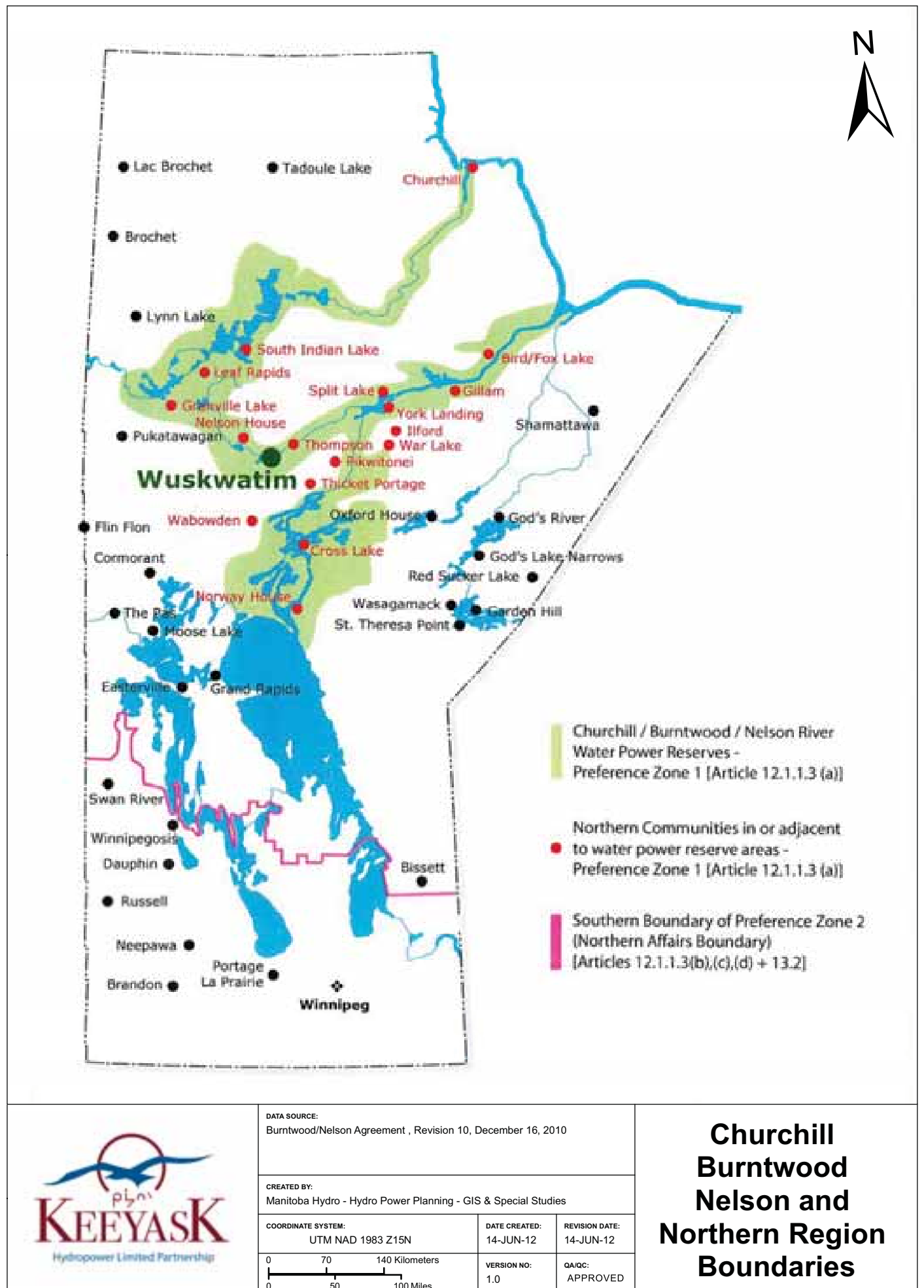












DATA SOURCE:  
Burntwood/Nelson Agreement , Revision 10, December 16, 2010

CREATED BY:  
Manitoba Hydro - Hydro Power Planning - GIS & Special Studies

COORDINATE SYSTEM: UTM NAD 1983 Z15N	DATE CREATED: 14-JUN-12	REVISION DATE: 14-JUN-12
0 70 140 Kilometers 0 50 100 Miles	VERSION NO: 1.0	QA/QC: APPROVED