



Keeyask Generation Project

Environmental Impact Statement

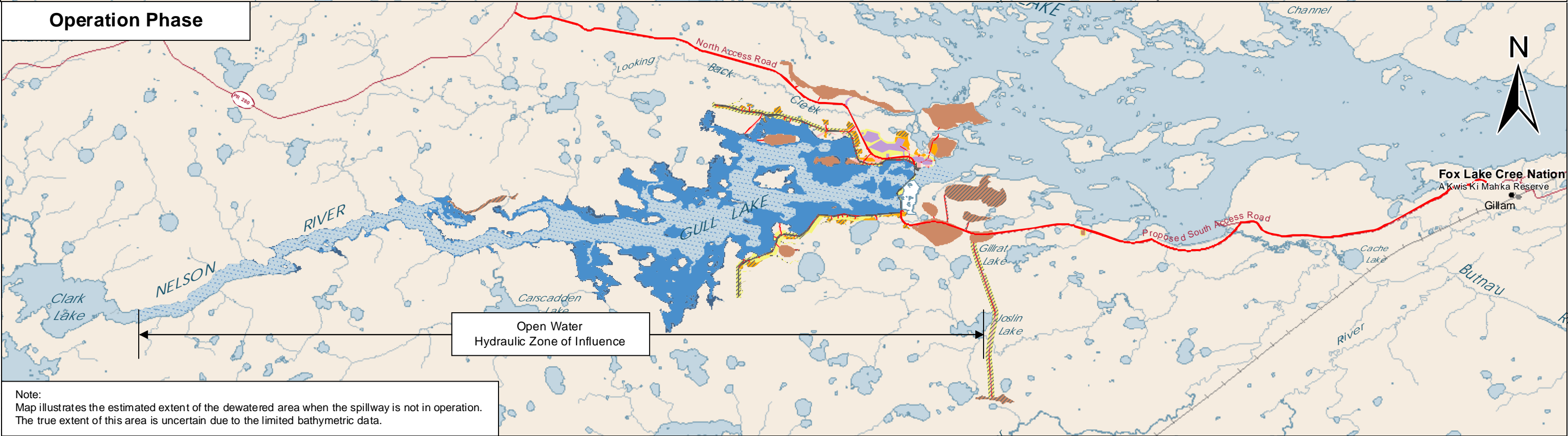
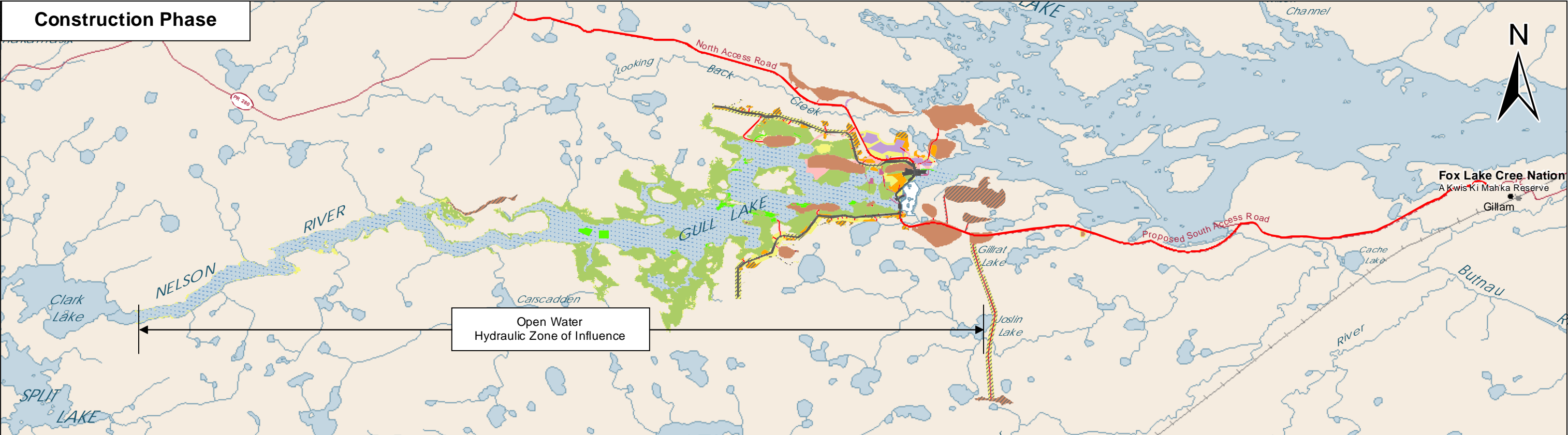
Response to EIS Guidelines



June 2012

CHAPTER 4

PROJECT DESCRIPTION



Note:
Map illustrates the estimated extent of the dewatered area when the spillway is not in operation.
The true extent of this area is uncertain due to the limited bathymetric data.

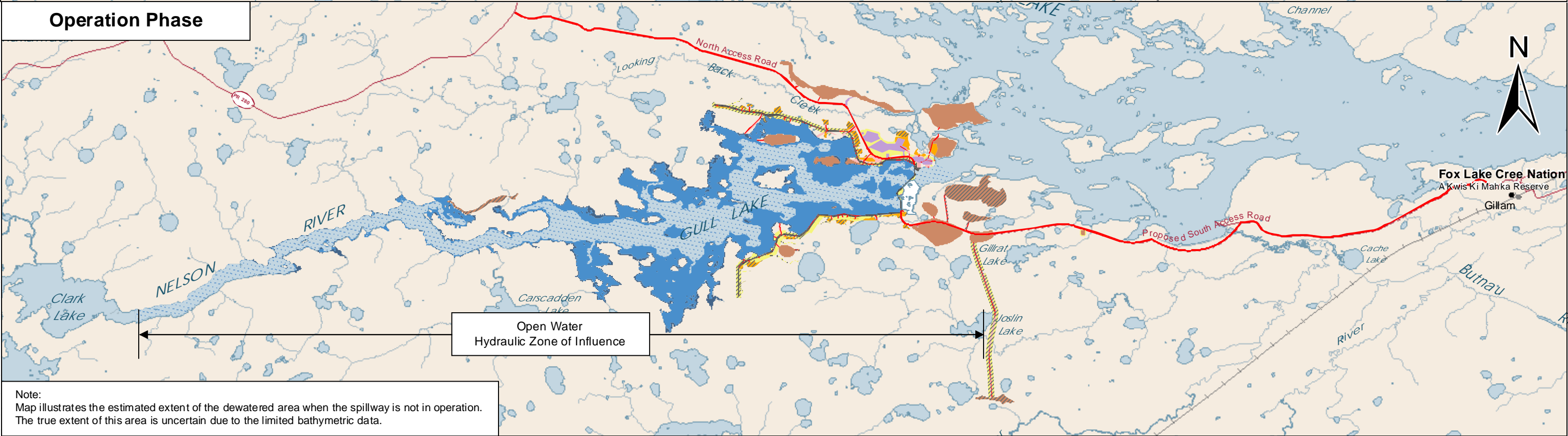
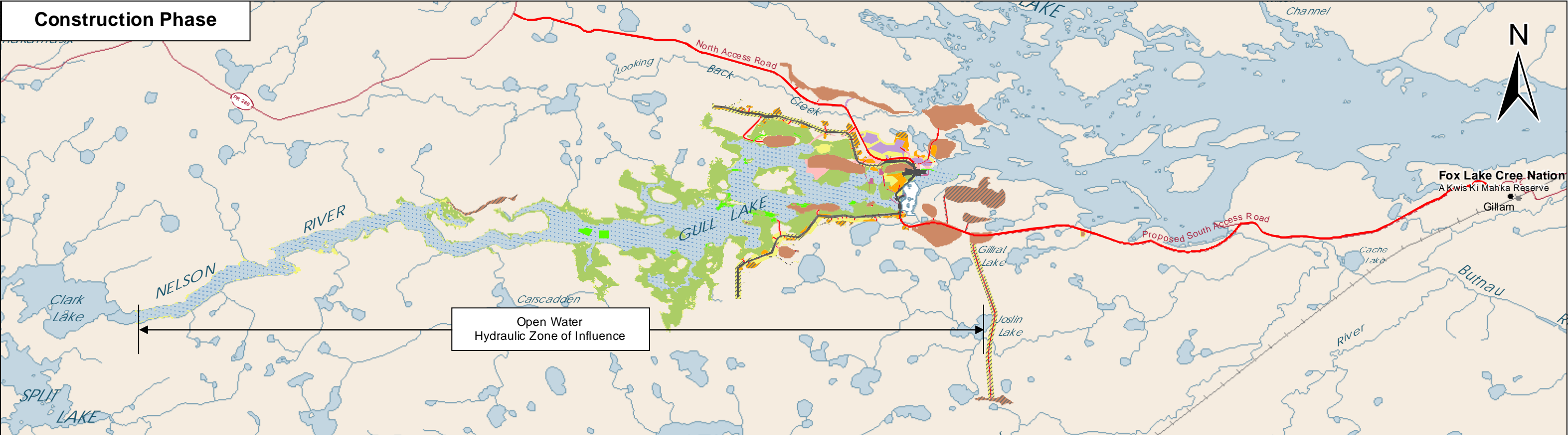


DATA SOURCE: Manitoba Hydro; Government of Manitoba; Government of Canada; ECOSTEM		
CREATED BY: Manitoba Hydro - Hydro Power Planning		
COORDINATE SYSTEM: UTM NAD 1983 Z15N	DATE CREATED: 18-JAN-12	REVISION DATE: 25-APR-12
0 3 6 Kilometres 0 2 4 Miles	VERSION NO: 3.0	QA/QC: Approved

Legend

- | | | |
|--------------------|--|-----------------------------|
| Road | Excavated Material Placement Area | Altered Water Level or Flow |
| Road Corridor | Mitigation Area | Potential Dewatered Area |
| Infrastructure | Possible Disturbed Area | Existing Water Surface Area |
| River Management | Reservoir Clearing | Areas Unlikely to be Used |
| Borrow Area | Initial Flooded Area (159 m) | |
| Camp and Work Area | 30-year Reservoir Expansion Area (159 m) | |

**Project Footprint
Overview**
Construction and Operation Phase



Note:
Map illustrates the estimated extent of the dewatered area when the spillway is not in operation.
The true extent of this area is uncertain due to the limited bathymetric data.



DATA SOURCE:
Manitoba Hydro; Government of Manitoba;
Government of Canada; ECOSTEM

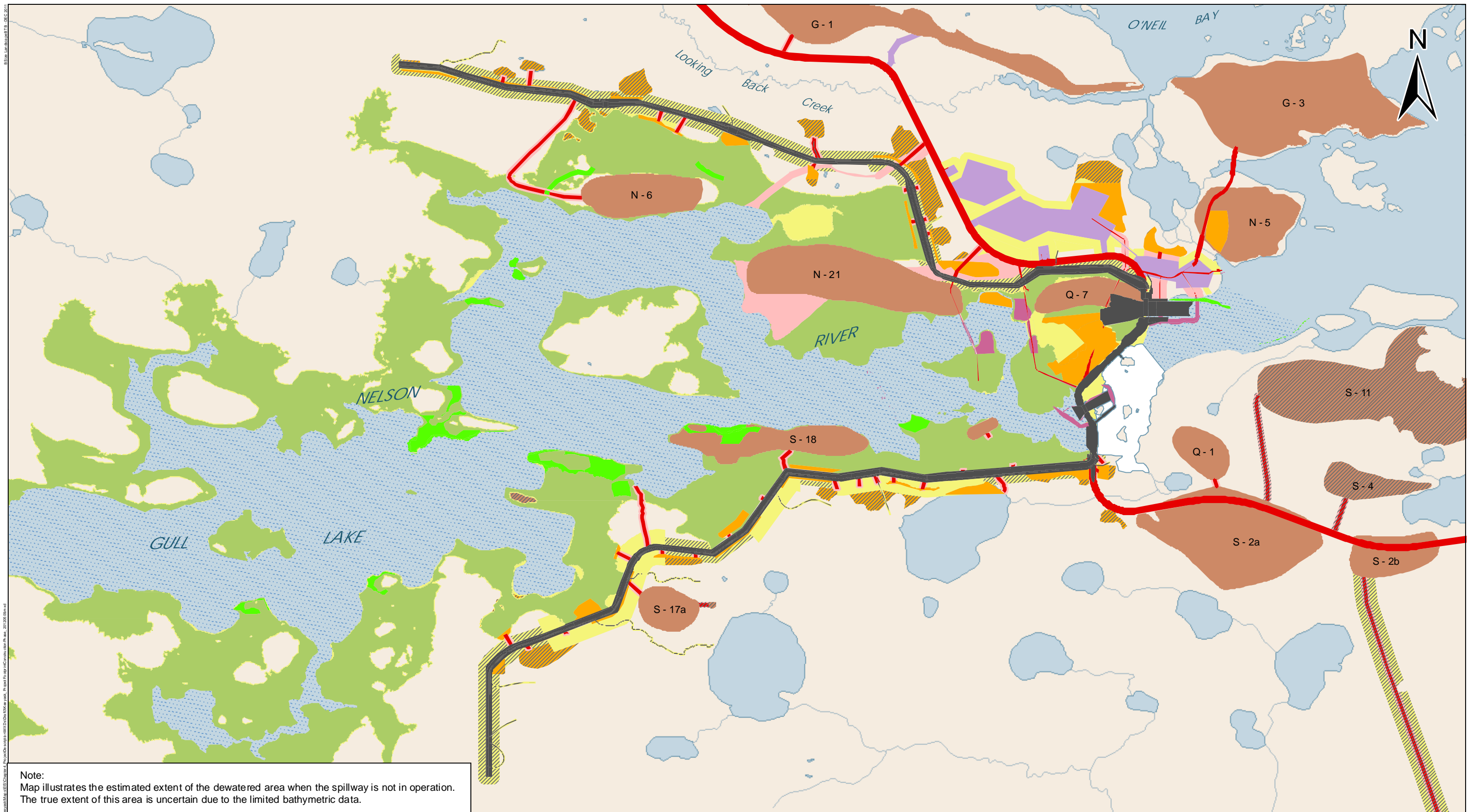
CREATED BY:
Manitoba Hydro - Hydro Power Planning

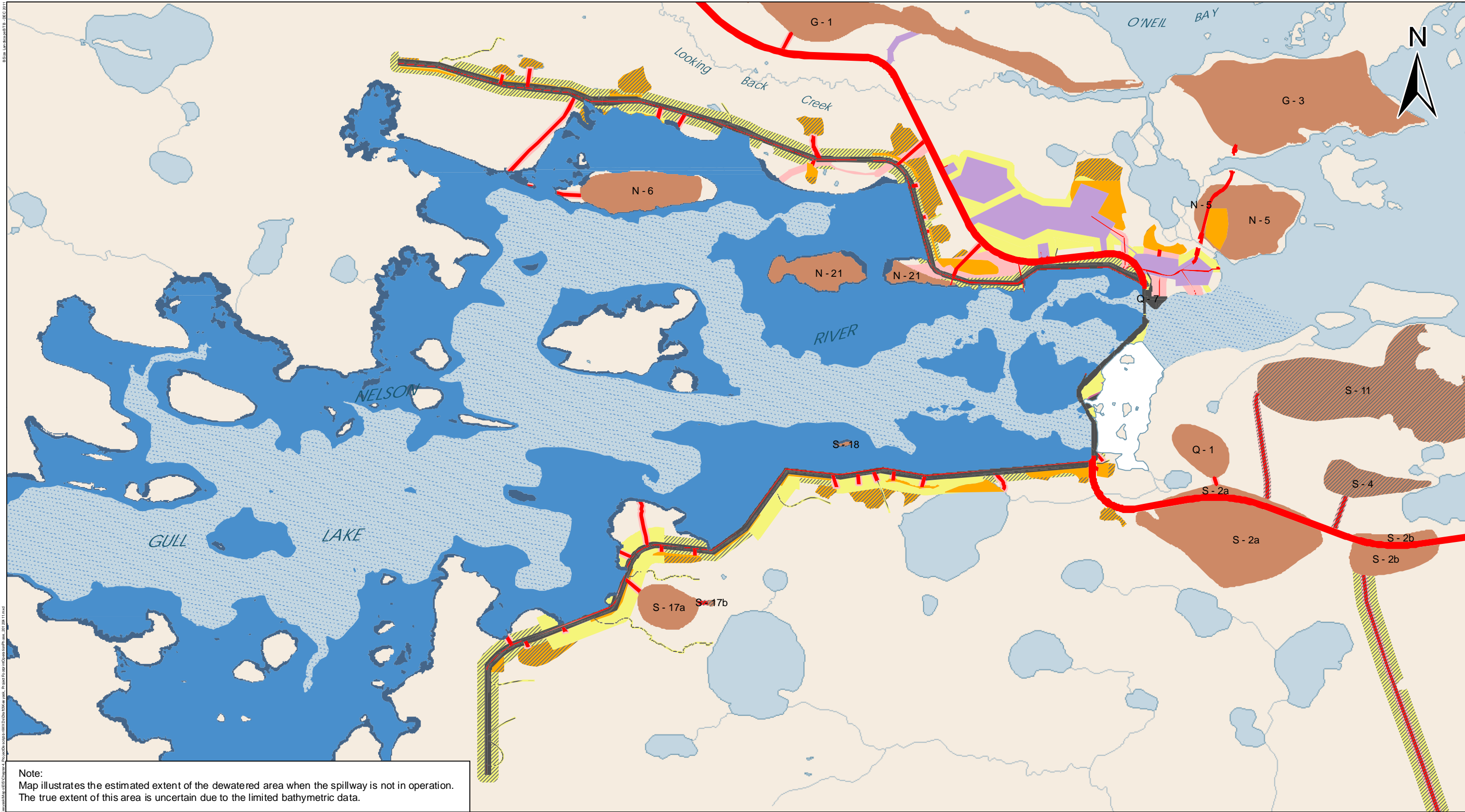
COORDINATE SYSTEM: UTM NAD 1983 Z15N	DATE CREATED: 18-JAN-12	REVISION DATE: 25-APR-12
	VERSION NO: 3.0	QA/QC: Approved

Legend

Road	Excavated Material Placement Area	Altered Water Level or Flow
Road Corridor	Mitigation Area	Potential Dewatered Area
Infrastructure	Possible Disturbed Area	Existing Water Surface Area
River Management	Reservoir Clearing	Areas Unlikely to be Used
Borrow Area	Initial Flooded Area (159 m)	
Camp and Work Area	30-year Reservoir Expansion Area (159 m)	

Project Footprint Overview
Construction and Operation Phase





Note:
Map illustrates the estimated extent of the dewatered area when the spillway is not in operation.
The true extent of this area is uncertain due to the limited bathymetric data.



DATA SOURCE:
Manitoba Hydro; Government of Manitoba;
Government of Canada; ECOSTEM

CREATED BY:
Hydro Power Planning - Keeyask & Burntwood Planning Section

COORDINATE SYSTEM:
UTM NAD 1983 Z15N

DATE CREATED:
18-JAN-12

REVISION DATE:
18-APR-12

0 0.55 1.1 Kilometres
0 0.45 0.9 Miles

VERSION NO:
3.0

QA/QC:
Approved

Legend

Road

Road Corridor

Infrastructure

River Management

Borrow Area

Camp and Work Area

Excavated Material Placement Area

Mitigation Area

Possible Disturbed Area

Initial Flooded Area (159 m)

30-year Reservoir Expansion Area (159 m)

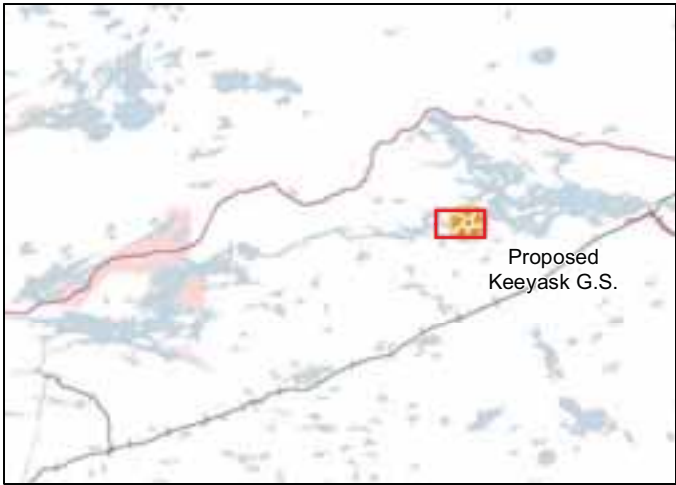
Altered Water Level or Flow

Potential Dewatered Area

Existing Water Surface Area

Areas Unlikely to be Used

Project Footprint Operation Phase Site Level



DATA SOURCE:
Manitoba Hydro; Government of Manitoba; Government of Canada

CREATED BY:
Manitoba Hydro - Hydro Power Planning - GIS & Special Studies

COORDINATE SYSTEM:
UTM NAD 1983 Z15N

DATE CREATED:
12-APR-12

REVISION DATE:
18-APR-12

0 0.25 0.5 Kilometres
0 0.2 0.4 Miles

VERSION NO:
1.0

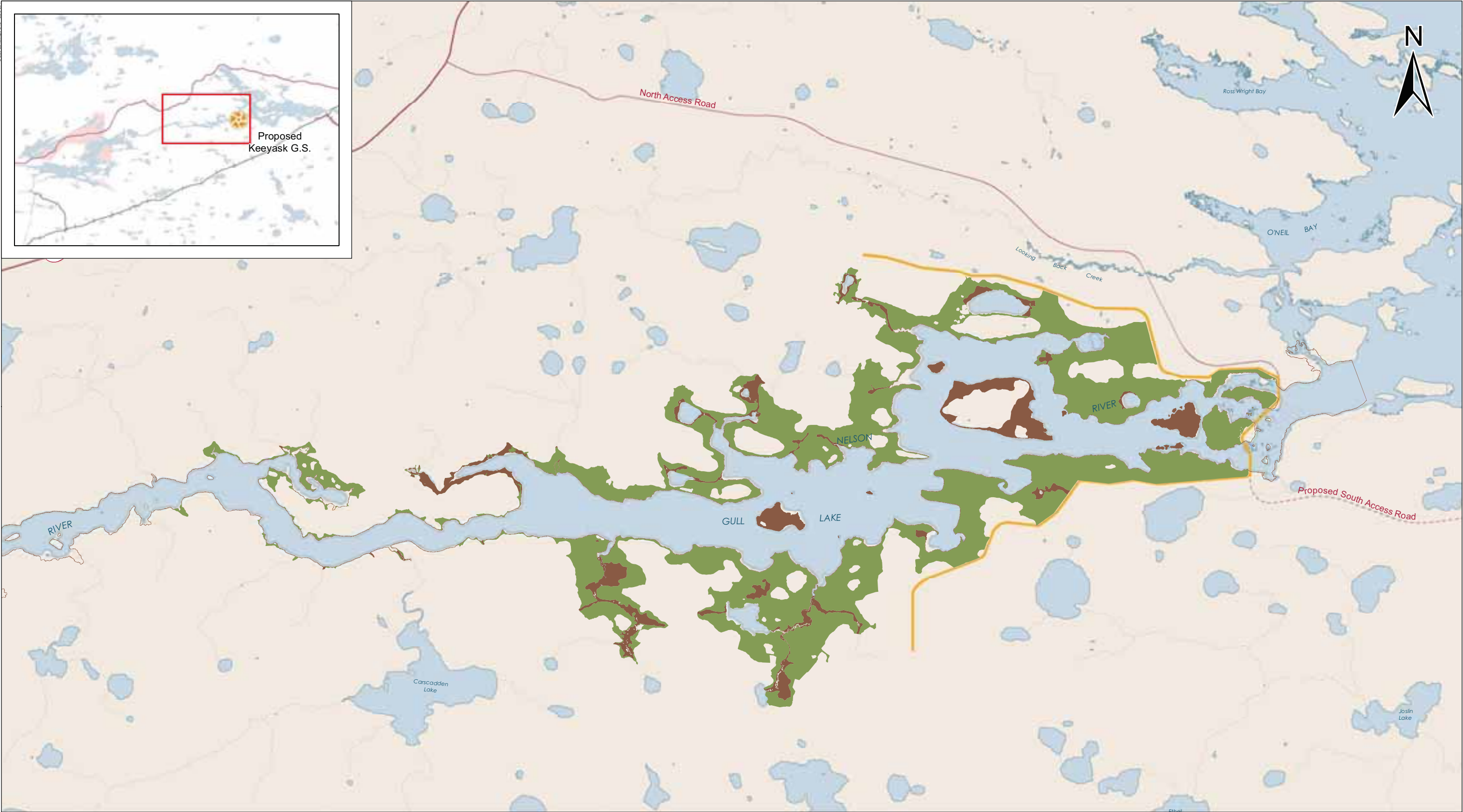
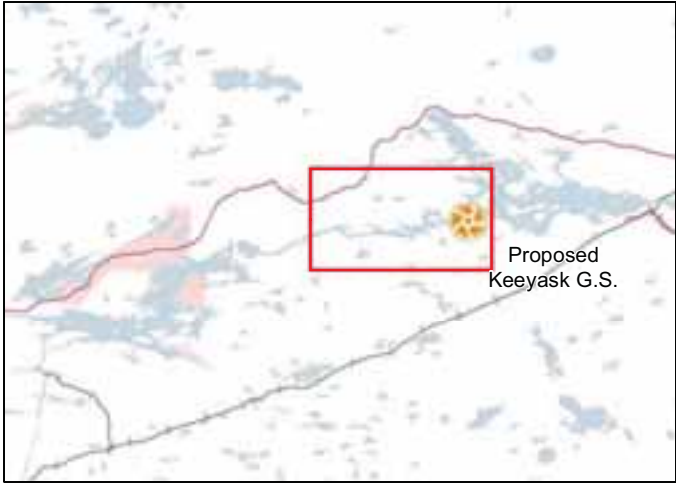
QA/QC:
APPROVED

Legend

- Alternative Axis
- GR-1
 - GR-2
 - GR-3
 - GR-4
 - GR-5
 - Proposed Infrastructure

Keeyask
Alternative Axes

8 State Landscapes 1975 - 1982-2012
File Location: W:\Workbooks - Other\Power_Supply\Proposed\Map\GIS\Chapter_4_Proposed\Reservoir\ClearingMethods_20120412.mxd



DATA SOURCE:
Manitoba Hydro; Government of Manitoba; Government of Canada; Plus 4 Consulting & ECOSTEM Ltd Clearing Plan published 2011-12-02; Manitoba Hydro Best Available Water (2010_WRE_QBird_CanVec50k_2012_02_16)

CREATED BY:
Manitoba Hydro - Hydro Power Planning - GIS & Special Studies

COORDINATE SYSTEM:
UTM NAD 1983 Z15N

DATE CREATED:
16-FEB-12

REVISION DATE:
12-APR-12

0 1 2 Kilometres
0 0.9 1.8 Miles

VERSION NO:
2.0

QA/QC:
APPROVED

Legend

Type of Clearing

- Hand Clearing
- Hand or Machine Clearing

Keeyask Principal Structures

- Highway
- Access Road
- Proposed Access Road

Proposed Reservoir Clearing Methods