



# Keeyask Generation Project

## Environmental Impact Statement

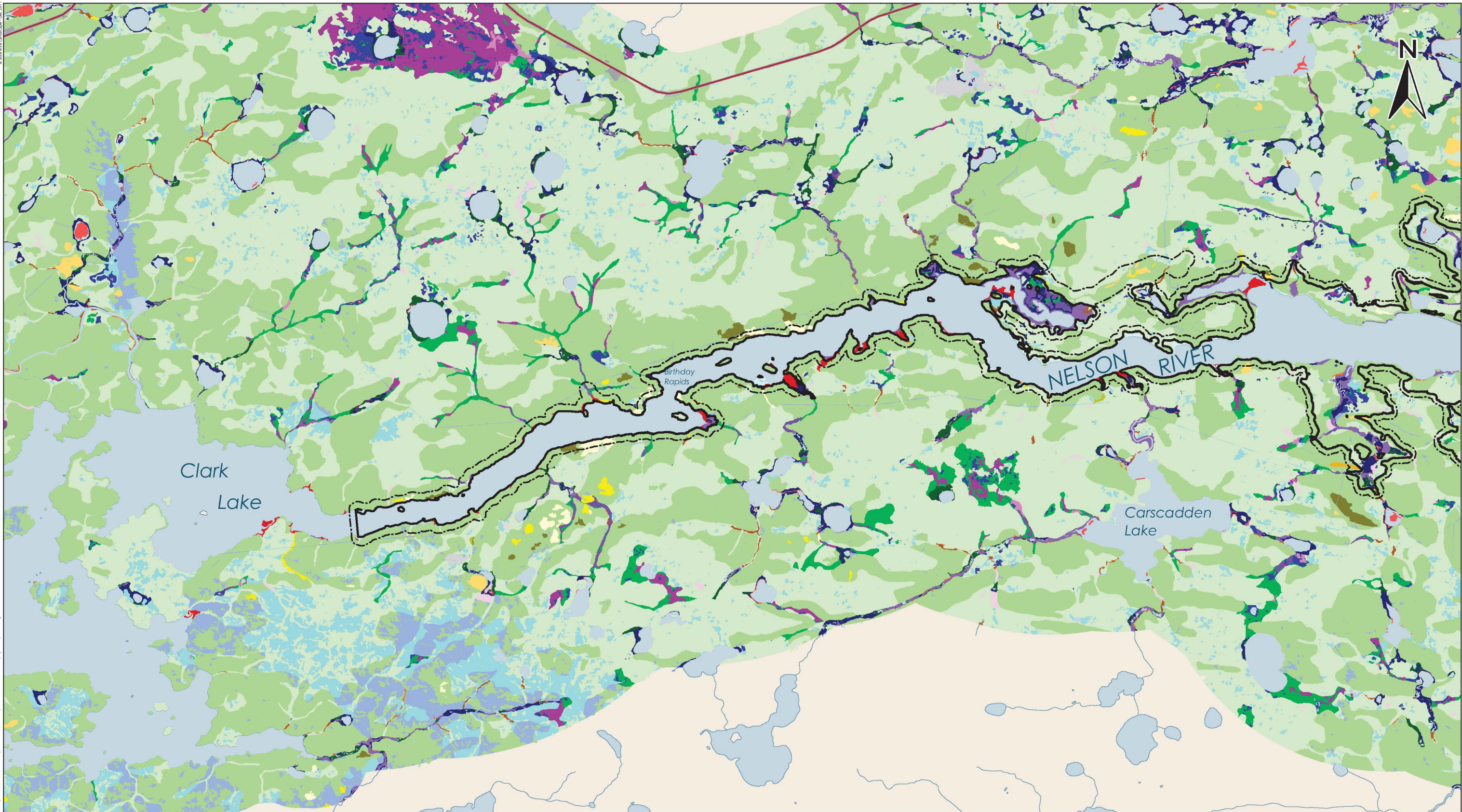
### Supporting Volume

## Terrestrial Environment





B Site RTD Landcover, Dec 2011  
File location: Z:\Workspaces\Keeeyask GIS\Figures\Keeeyask\Map2-25 Coarse habitat in the project footprint during construction West.wor



DATA SOURCE: Study areas, coarse habitat, footprints and Nelson River shoreline - ECOSTEM Ltd.; Water - NTS.		
CREATED BY: ECOSTEM Ltd.		
COORDINATE SYSTEM: UTM NAD 1983 Z15N	DATE CREATED: 05-JUN-12	REVISION DATE: 08-JUN-12
	VERSION NO: 1.0	QA/QC: APPROVED

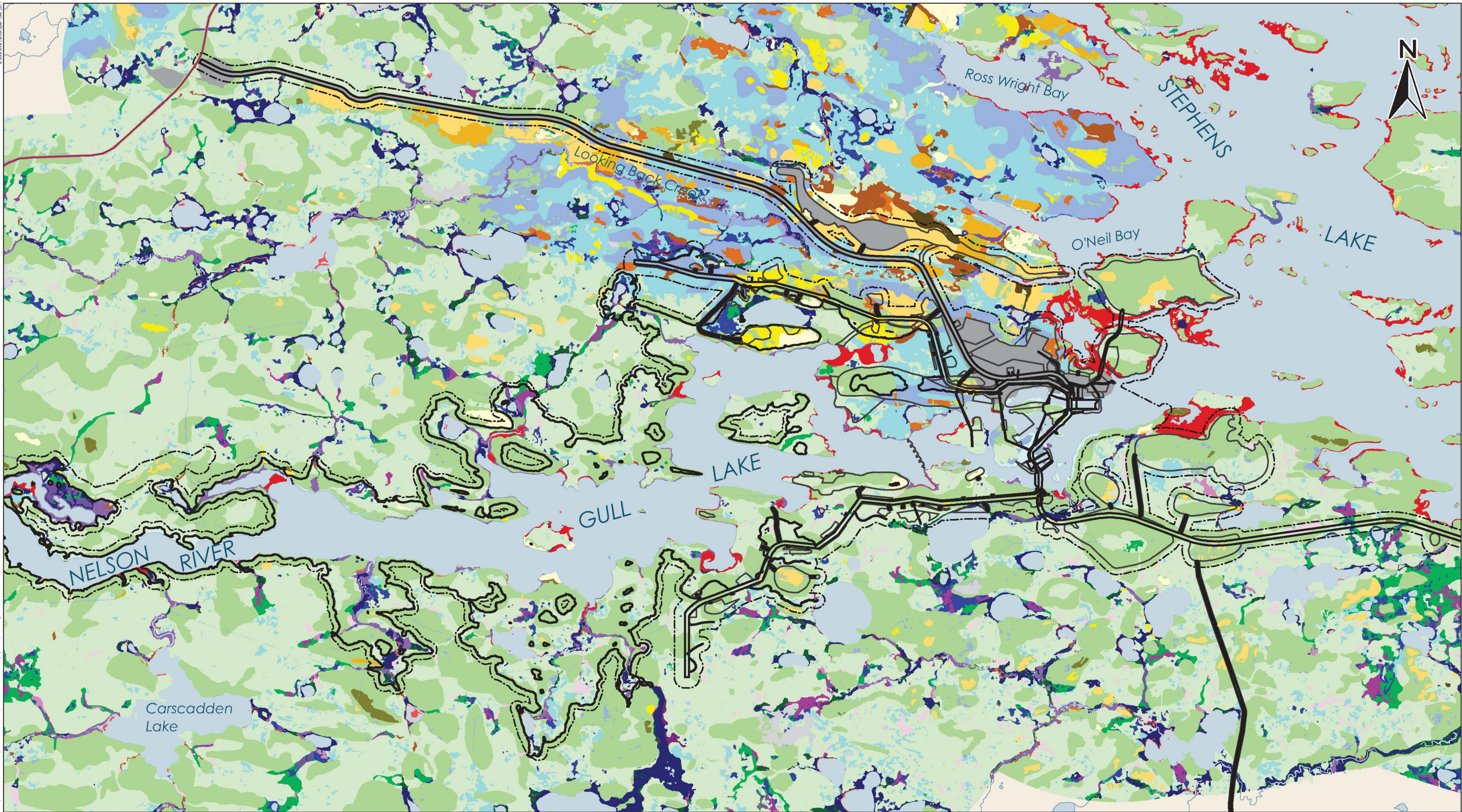
<b>Legend</b>		
Black Spruce Mixedwood on Mineral or Thin Peatland	Low Vegetation on Mineral or Thin Peatland	Tamarack Treed on Shallow Peatland
Black Spruce Mixedwood on Shallow Peatland	Low Vegetation on Riparian Peatland	Tamarack Treed on Wet Peatland
Black Spruce Treed on Mineral or Thin Peatland	Low Vegetation on Shallow Peatland	Tamarack- Black Spruce Mixture on Riparian Peatland
Black Spruce Treed on Riparian Peatland	Low Vegetation on Wet Peatland	Tamarack- Black Spruce Mixture on Wet Peatland
Black Spruce Treed on Shallow Peatland	Shrub/ Low Vegetation on Ice Scour- Mineral	Unclassified Burn
Black Spruce Treed on Wet Peatland	Shrub/ Low Vegetation on Riparian Peatland	Nelson River Marsh
Broadleaf Mixedwood on All Ecosites	Tall Shrub on Mineral or Thin Peatland	Off-system Marsh
Broadleaf Treed on All Ecosites	Tall Shrub on Riparian Peatland	Water
Jack Pine Mixedwood on Mineral or Thin Peatland	Tall Shrub on Shallow Peatland	Human Infrastructure
Jack Pine Treed on Mineral or Thin Peatland	Tall Shrub on Wet Peatland	Habitat Local Study Area
Jack Pine Treed on Shallow Peatland	Tamarack Treed on Riparian Peatland	
		<b>Footprints During Construction</b>
		Temporary Footprint
		Permanent Footprint

## Coarse Habitat in the Project Footprints

### Western Portion



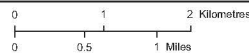
B Site RTD Landscape Dec 2011  
File location: Z:\Workspaces\Keeeyask GIS\B Site\Map\Keeeyask\Map\Map2-26 Coarse habitat in the project footprint during construction Central por



DATA SOURCE:  
Study areas, coarse habitat, footprints and Nelson River shoreline  
- ECOSTEM Ltd.; Water - NTS.

CREATED BY:  
ECOSTEM Ltd.

COORDINATE SYSTEM:  
UTM NAD 1983 Z15N



DATE CREATED:  
05-JUN-12

REVISION DATE:  
08-JUN-12

VERSION NO:  
1.0

QA/QC:  
APPROVED

#### Legend

- Black Spruce Mixedwood on Mineral or Thin Peatland
- Black Spruce Mixedwood on Shallow Peatland
- Black Spruce Treed on Mineral or Thin Peatland
- Black Spruce Treed on Riparian Peatland
- Black Spruce Treed on Shallow Peatland
- Black Spruce Treed on Wet Peatland
- Broadleaf Mixedwood on All Ecosites
- Broadleaf Treed on All Ecosites
- Jack Pine Mixedwood on Mineral or Thin Peatland
- Jack Pine Treed on Mineral or Thin Peatland
- Jack Pine Treed on Shallow Peatland

- Low Vegetation on Mineral or Thin Peatland
- Low Vegetation on Riparian Peatland
- Low Vegetation on Shallow Peatland
- Low Vegetation on Wet Peatland
- Shrub/ Low Vegetation on Ice Scour- Mineral
- Shrub/ Low Vegetation on Riparian Peatland
- Tall Shrub on Mineral or Thin Peatland
- Tall Shrub on Riparian Peatland
- Tall Shrub on Shallow Peatland
- Tall Shrub on Wet Peatland
- Tamarack Treed on Riparian Peatland

- Tamarack Treed on Shallow Peatland
- Tamarack Treed on Wet Peatland
- Tamarack- Black Spruce Mixture on Riparian Peatland
- Tamarack- Black Spruce Mixture on Wet Peatland
- Unclassified Burn
- Nelson River Marsh
- Off-system Marsh
- Water
- Human Infrastructure
- Habitat Local Study Area

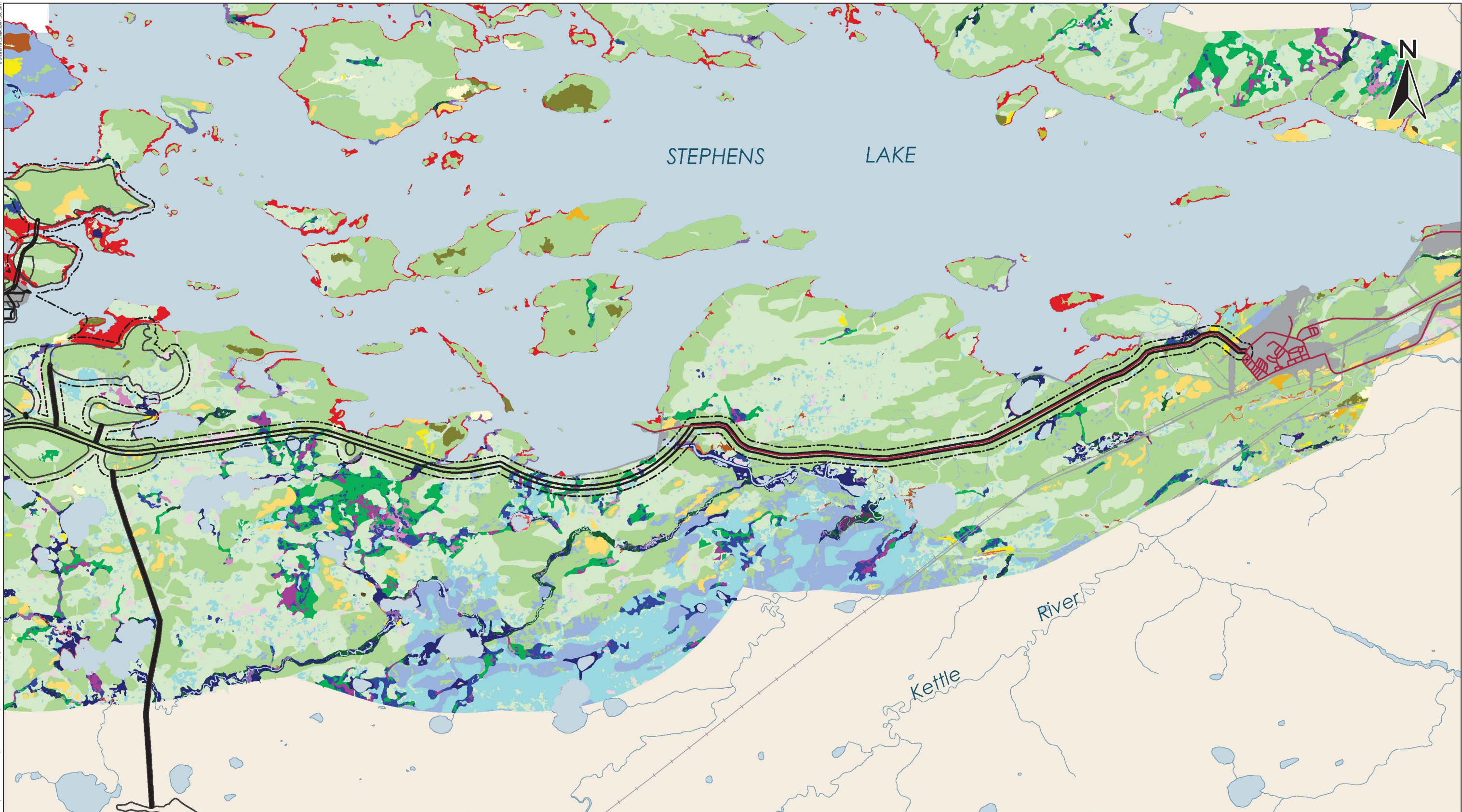
#### Footprints During Construction

- Temporary Footprint
- Permanent Footprint

## Coarse Habitat in the Project Footprints Central Portion



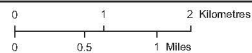
B Site BTR Landowners, Dec 2011  
File location: Z:\Workspaces\Keeeyask GIS\BTR\Map\Keeeyask Ad A WholeMap 2 x 2 - Coarse habitat in the project footprint during construction East.wor



DATA SOURCE:  
Study areas, coarse habitat, footprints and Nelson River shoreline  
- ECOSTEM Ltd.; Water - NTS.

CREATED BY:  
ECOSTEM Ltd.

COORDINATE SYSTEM:  
UTM NAD 1983 Z15N



DATE CREATED:  
05-JUN-12

REVISION DATE:  
08-JUN-12

VERSION NO:  
1.0

QA/QC:  
APPROVED

#### Legend

- Black Spruce Mixedwood on Mineral or Thin Peatland
- Black Spruce Mixedwood on Shallow Peatland
- Black Spruce Treed on Mineral or Thin Peatland
- Black Spruce Treed on Riparian Peatland
- Black Spruce Treed on Shallow Peatland
- Black Spruce Treed on Wet Peatland
- Broadleaf Mixedwood on All Ecosites
- Broadleaf Treed on All Ecosites
- Jack Pine Mixedwood on Mineral or Thin Peatland
- Jack Pine Treed on Mineral or Thin Peatland
- Jack Pine Treed on Shallow Peatland

- Low Vegetation on Mineral or Thin Peatland
- Low Vegetation on Riparian Peatland
- Low Vegetation on Shallow Peatland
- Low Vegetation on Wet Peatland
- Shrub/ Low Vegetation on Ice Scour- Mineral
- Shrub/ Low Vegetation on Riparian Peatland
- Tall Shrub on Mineral or Thin Peatland
- Tall Shrub on Riparian Peatland
- Tall Shrub on Shallow Peatland
- Tall Shrub on Wet Peatland
- Tamarack Treed on Riparian Peatland

- Tamarack Treed on Shallow Peatland
- Tamarack Treed on Wet Peatland
- Tamarack- Black Spruce Mixture on Riparian Peatland
- Tamarack- Black Spruce Mixture on Wet Peatland
- Unclassified Burn
- Nelson River Marsh
- Off-system Marsh
- Water
- Human Infrastructure
- Habitat Local Study Area

#### Footprints During Construction

- Temporary Footprint
- Permanent Footprint

## Coarse Habitat in the Project Footprints Eastern Portion