

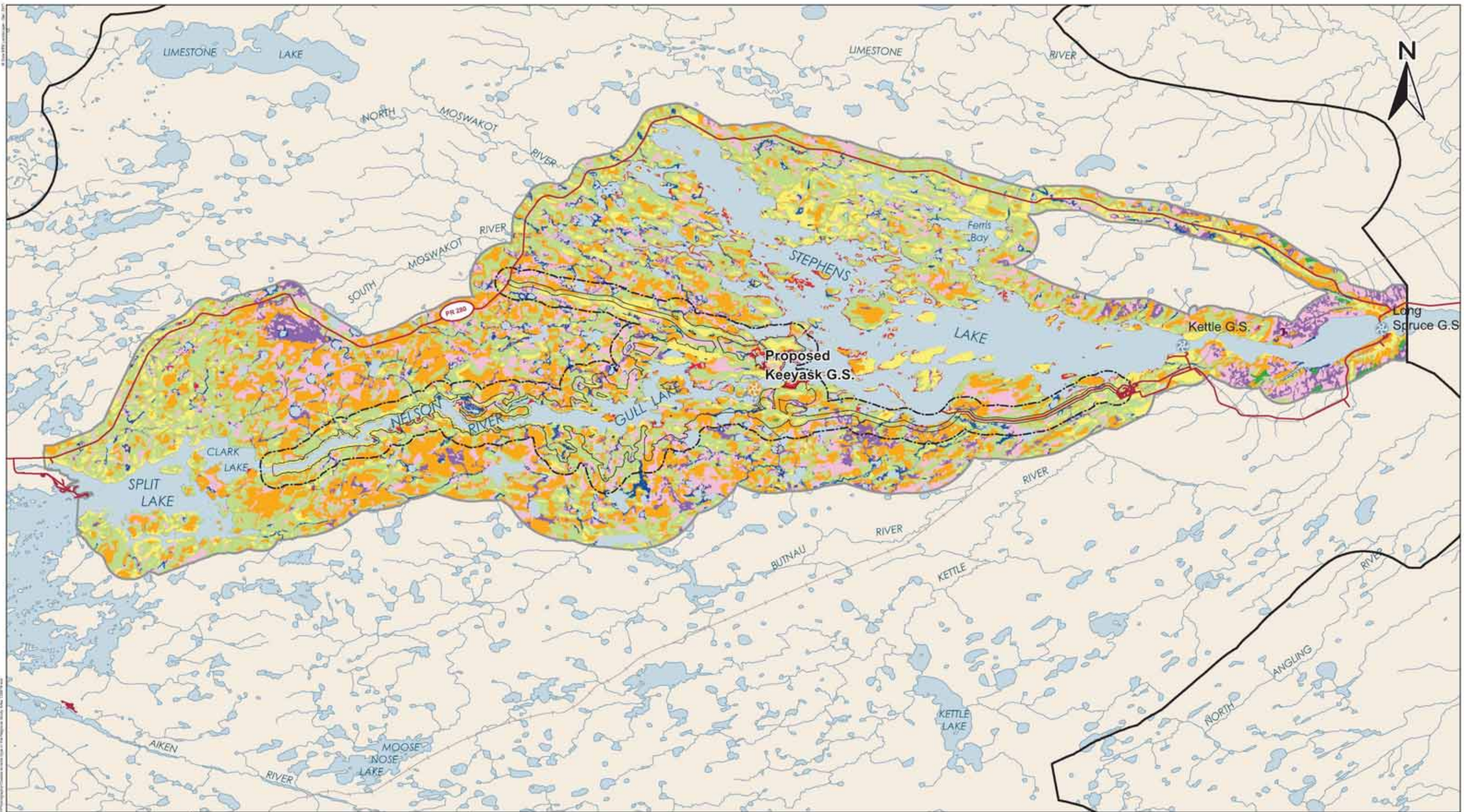


Keeyask Generation Project Environmental Impact Statement

Supporting Volume Terrestrial Environment



June 2012



DATA SOURCE: Study areas, ecosite data and Nelson River shoreline - ECOSTEM Ltd.; Water - NTS; Roads and rail - Manitoba Conservation.		
CREATED BY: ECOSTEM Ltd.		
COORDINATE SYSTEM: UTM NAD 1983 Z15N	DATE CREATED: 03-FEB-12	REVISION DATE: 31-MAY-12
	VERSION NO.: 1.0	DATE: APPROVED

Legend

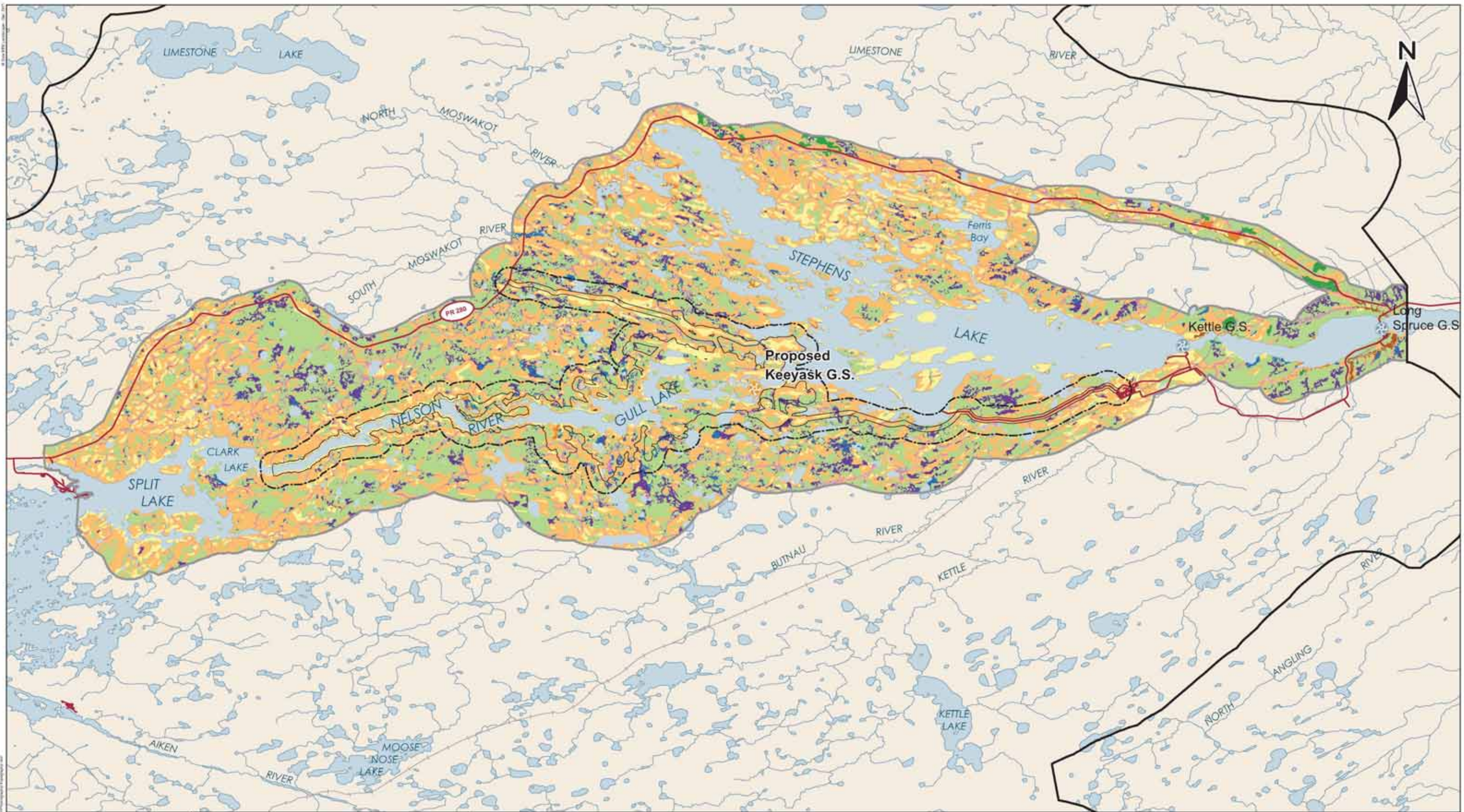
Coarse Ecosite

 Mineral	 Permafrost Peatland - Other	 Ice Scour - Mineral
 Thin Peatland	 Deep Peatland	 Shoreline Wetland
 Shallow Peatland	 Wet Deep Peatland	 Shallow Water
 Ground Ice Peatland	 Riparian Peatland	

Study Areas

 Study Zone 2
 Study Zone 3
 Study Zone 4
 Study Zone 5

Coarse Ecosite



DATA SOURCE: Study areas, topography data and Nelson River shoreline - ECOSTEM Ltd.; Water - NTS; Roads and rail - Manitoba Conservation.		
CREATED BY: ECOSTEM Ltd.		
COORDINATE SYSTEM: UTM NAD 1983 Z15N	DATE CREATED: 29-MAY-12	REVISION DATE: 31-MAY-12
	VERSION NO.: 1.0	DATE: APPROVED

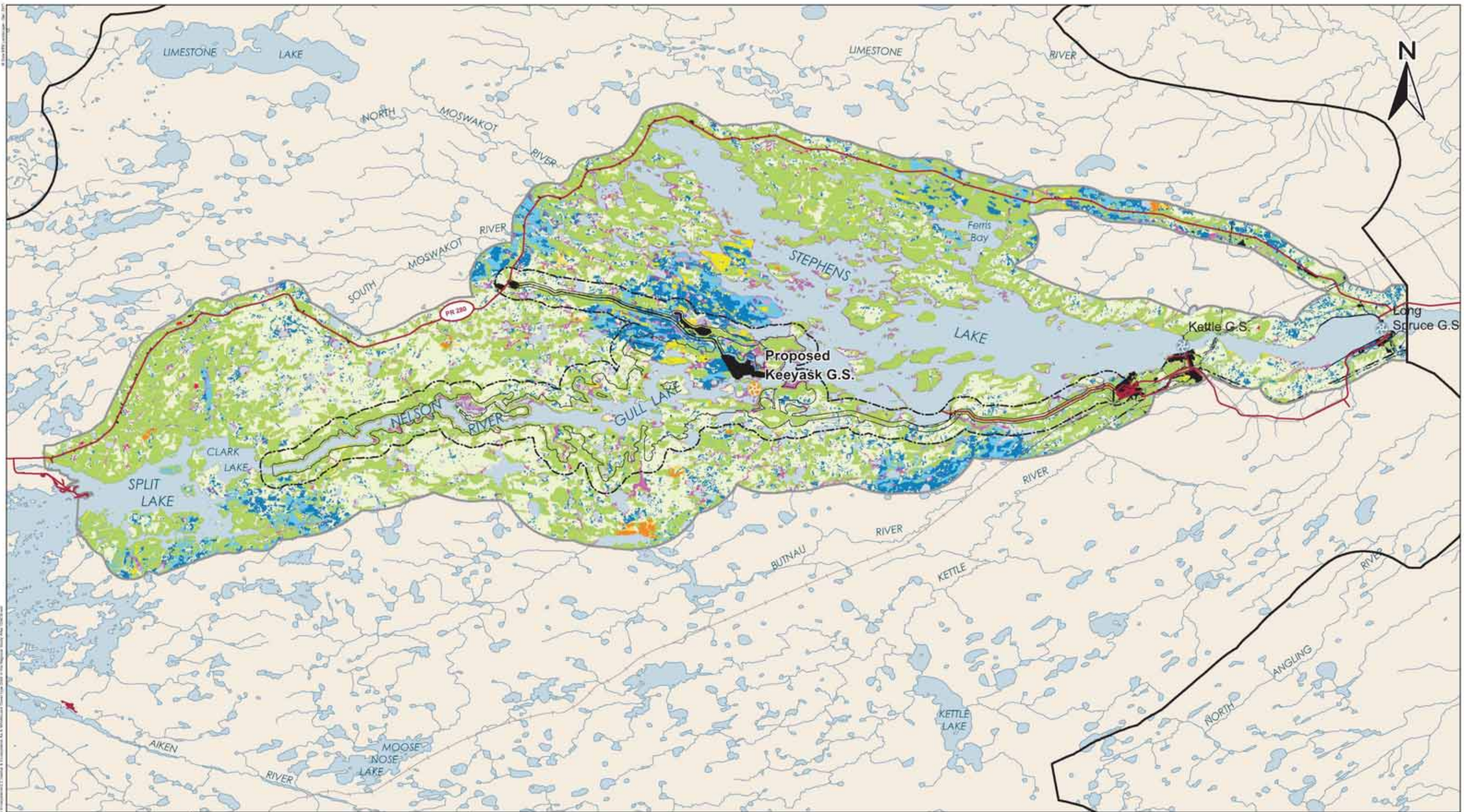
**Legend
Topography**

- | | | |
|---|---|--|
| ■ Horizontal | ■ Ravine | ■ Bank |
| ■ Horizontal - Raised | ■ Runnel | ■ Beach |
| ■ Hummocky | ■ Depression | ■ Water |
| ■ Dissected | ■ Slope | |
| ■ Basin | ■ Ridge / Crest | |

Study Areas

- | |
|---|
| Study Zone 2 |
| Study Zone 3 |
| Study Zone 4 |
| Study Zone 5 |

Topographic Position



DATA SOURCE:
Study areas, land cover data and Nelson River shoreline - ECOSTEM Ltd.;
Water - NTS; Infrastructure - Manitoba Hydro; Roads and rail - Manitoba Conservation.

CREATED BY:
ECOSTEM Ltd.

COORDINATE SYSTEM: UTM NAD 1983 Z15N	DATE CREATED: 06-FEB-12	REVISION DATE: 31-MAY-12
	VERSION NO.: 1.0	DAQC: JWE/YYY/ZZZ

Legend

■ Broadleaf Treed on All Ecosites	■ Shrub / Low Vegetation on Shore Zone
■ Needleleaf Treed on Mineral or Thin Peatland	■ Emergent on Shore Zone
■ Needleleaf Treed on Other Peatlands	■ Young Regeneration on Mineral or Thin Peatland
■ Needleleaf Treed on Shore Zone Peatland	■ Young Regeneration on Other Peatlands
■ Tall Shrub on Mineral or Thin Peatland	■ Young Regeneration on Shore Zone Peatland
■ Tall Shrub on Other Peatlands	■ Water
■ Low Vegetation on Mineral or Thin Peatland	■ Permanent Human Footprint
■ Low Vegetation on Other Peatlands	

Study Areas

 Study Zone 2
 Study Zone 3
 Study Zone 4
 Study Zone 5

Land Cover

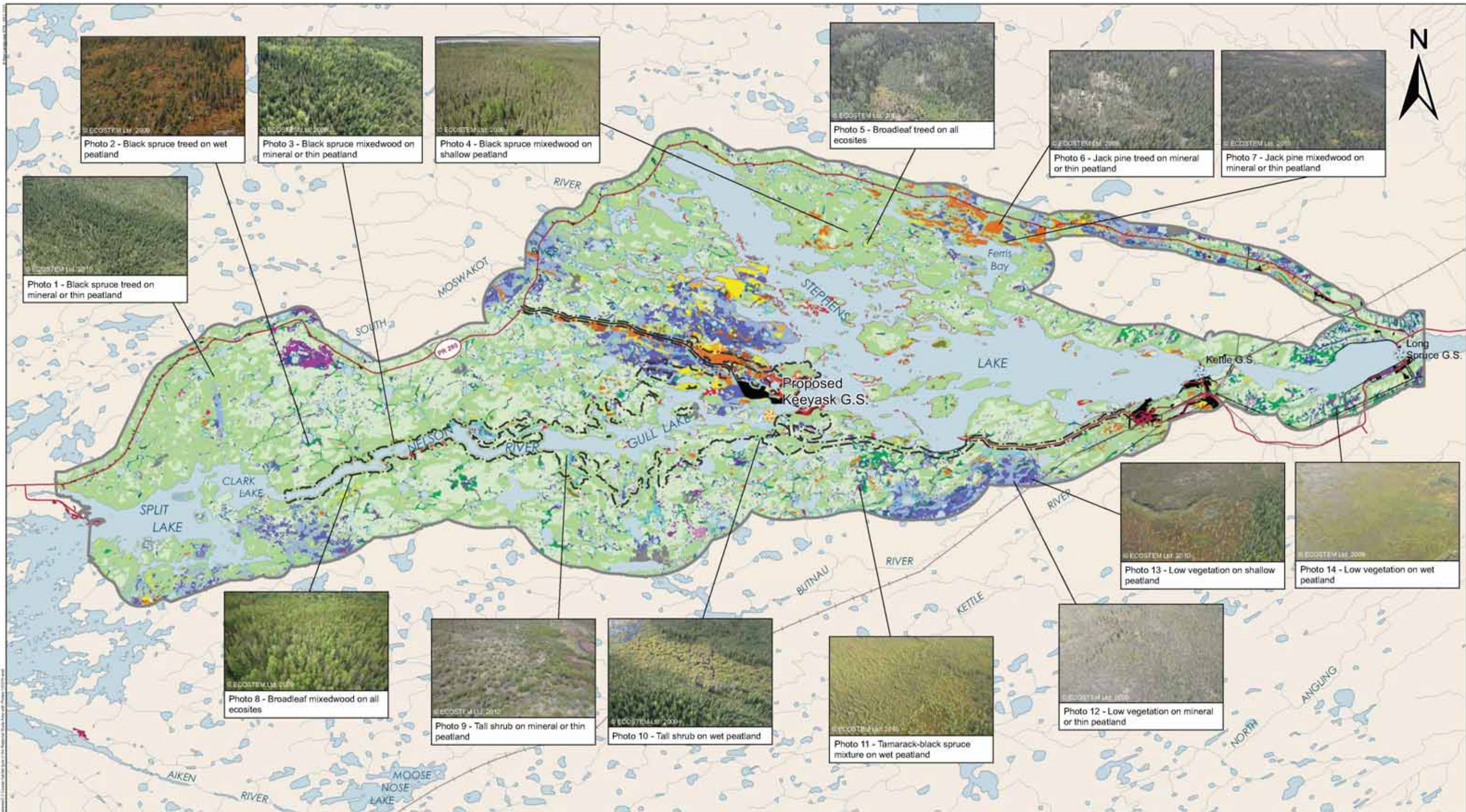


Photo 2 - Black spruce treed on wet peatland



Photo 3 - Black spruce mixedwood on mineral or thin peatland



Photo 4 - Black spruce mixedwood on shallow peatland



Photo 5 - Broadleaf treed on all ecosites



Photo 6 - Jack pine treed on mineral or thin peatland



Photo 7 - Jack pine mixedwood on mineral or thin peatland



Photo 1 - Black spruce treed on mineral or thin peatland



Photo 8 - Broadleaf mixedwood on all ecosites



Photo 9 - Tall shrub on mineral or thin peatland



Photo 10 - Tall shrub on wet peatland



Photo 11 - Tamarack-black spruce mixture on wet peatland



Photo 13 - Low vegetation on shallow peatland



Photo 14 - Low vegetation on wet peatland



Photo 12 - Low vegetation on mineral or thin peatland



DATA SOURCE:
Study areas, habitat data and Nelson River shoreline - ECOSTEM Ltd.; Water - NTS; Roads and rail - Manitoba Conservation.

CREATED BY:
ECOSTEM Ltd.

COORDINATE SYSTEM: UTM NAD 1983 Z15N	DATE CREATED: 20-MAR-12	REVISION DATE: 18-MAY-12
	VERSION NO.: 1.0	QAGC: APPROVED

Legend

- Yellow: Broadleaf Treed on All Ecosites
- Light Green: Broadleaf Mixedwood on All Ecosites
- Light Blue: Black Spruce Treed on Mineral or Thin Peatland
- Light Green: Black Spruce Treed on Shallow Peatland
- Dark Green: Black Spruce Treed on Wet Peatland
- Dark Green: Black Spruce Treed on Riparian Peatland
- Dark Green: Black Spruce Mixedwood on Mineral or Thin Peatland
- Light Green: Black Spruce Mixedwood on Shallow Peatland
- Orange: Jack Pine Treed on Mineral or Thin Peatland
- Dark Green: Jack Pine Treed on Shallow Peatland
- Orange: Jack Pine Mixedwood on Mineral or Thin Peatland
- Light Blue: Low Vegetation on Mineral or Thin Peatland
- Light Blue: Low Vegetation on Shallow Peatland
- Dark Blue: Low Vegetation on Wet Peatland
- Red: Marsh
- Light Blue: Shrub /Low Vegetation on Ice Scour -Mineral
- Light Blue: Shrub /Low Vegetation on Riparian Peatland
- Yellow: Tall Shrub on Mineral or Thin Peatland
- Orange: Tall Shrub on Shallow Peatland
- Dark Blue: Tall Shrub on Wet Peatland
- Light Green: Tamarack Tree on Shallow Peatland
- Light Green: Tamarack Tree on Wet Peatland
- Light Green: Tamarack Tree on Riparian Peatland
- Dark Green: Tamarack-Black Spruce Mixture on Wet Peatland
- Dark Green: Tamarack-Black Spruce Mixture on Riparian Peatland
- Grey: Unclassified Burn
- Blue: Water
- Black: Permanent Human Footprint
- Black outline: Habitat Local Study Area
- Grey outline: Study Zone 4

**Coarse Habitat
In Study Zone 4**