

2019 (July - December)

Powerhouse

- Complete Tailrace Channel excavation
- Complete placing Powerhouse and Service Bay Concrete
- Complete Rollways for Bays 1, 3, 5, 7
- Continue installation of Turbines and Generators
- Continue installation of Mechanical and Electrical systems
- Complete Unit 1 commissioning (first power)

Cofferdams and Groins

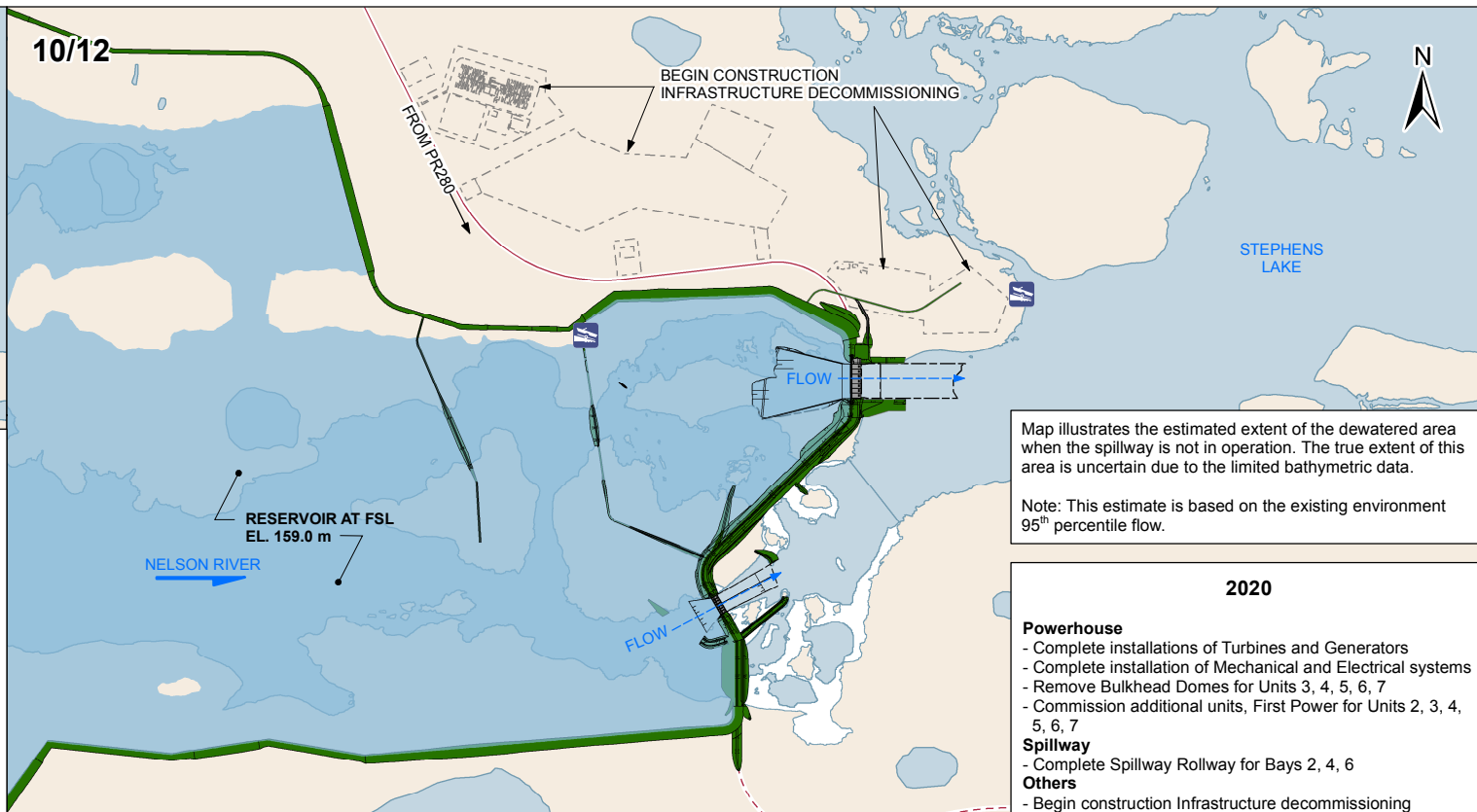
- Remove Tailrace Summer Level Cofferdam

Dams and Dykes

- Complete South Dam and South Dyke

Others

- Complete Transmission Tower Spur
- Remove Ice Boom
- Begin Reservoir Impoundment
- Remove Rockfill Causeway to Borrows G-3 and N-5
- Construct upstream Boat Launch and Barge Landing



Map illustrates the estimated extent of the dewatered area when the spillway is not in operation. The true extent of this area is uncertain due to the limited bathymetric data.

Note: This estimate is based on the existing environment 95th percentile flow.

2020

Powerhouse

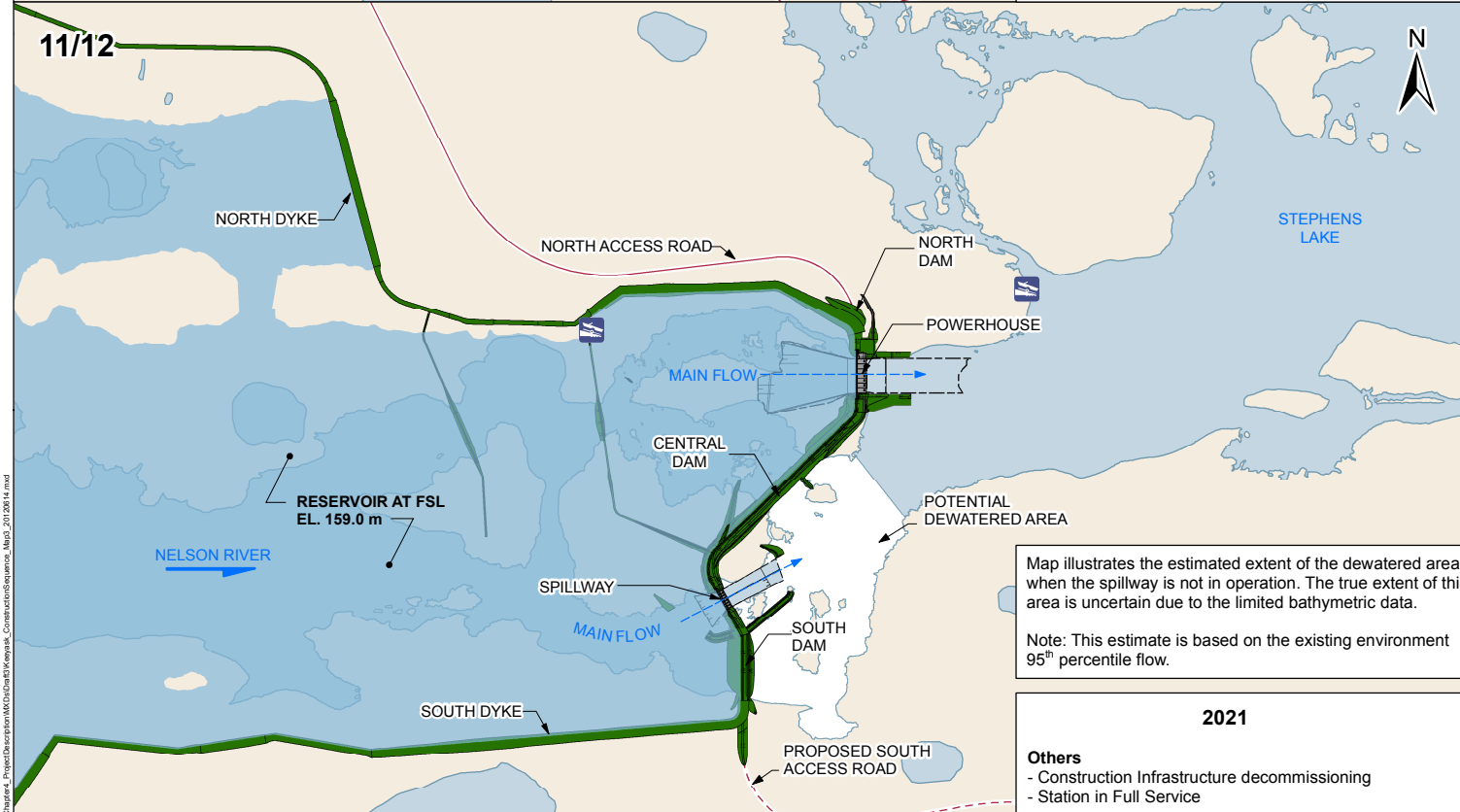
- Complete installations of Turbines and Generators
- Complete installation of Mechanical and Electrical systems
- Remove Bulkhead Domes for Units 3, 4, 5, 6, 7
- Commission additional units, First Power for Units 2, 3, 4, 5, 6, 7

Spillway

- Complete Spillway Rollway for Bays 2, 4, 6

Others

- Begin construction Infrastructure decommissioning



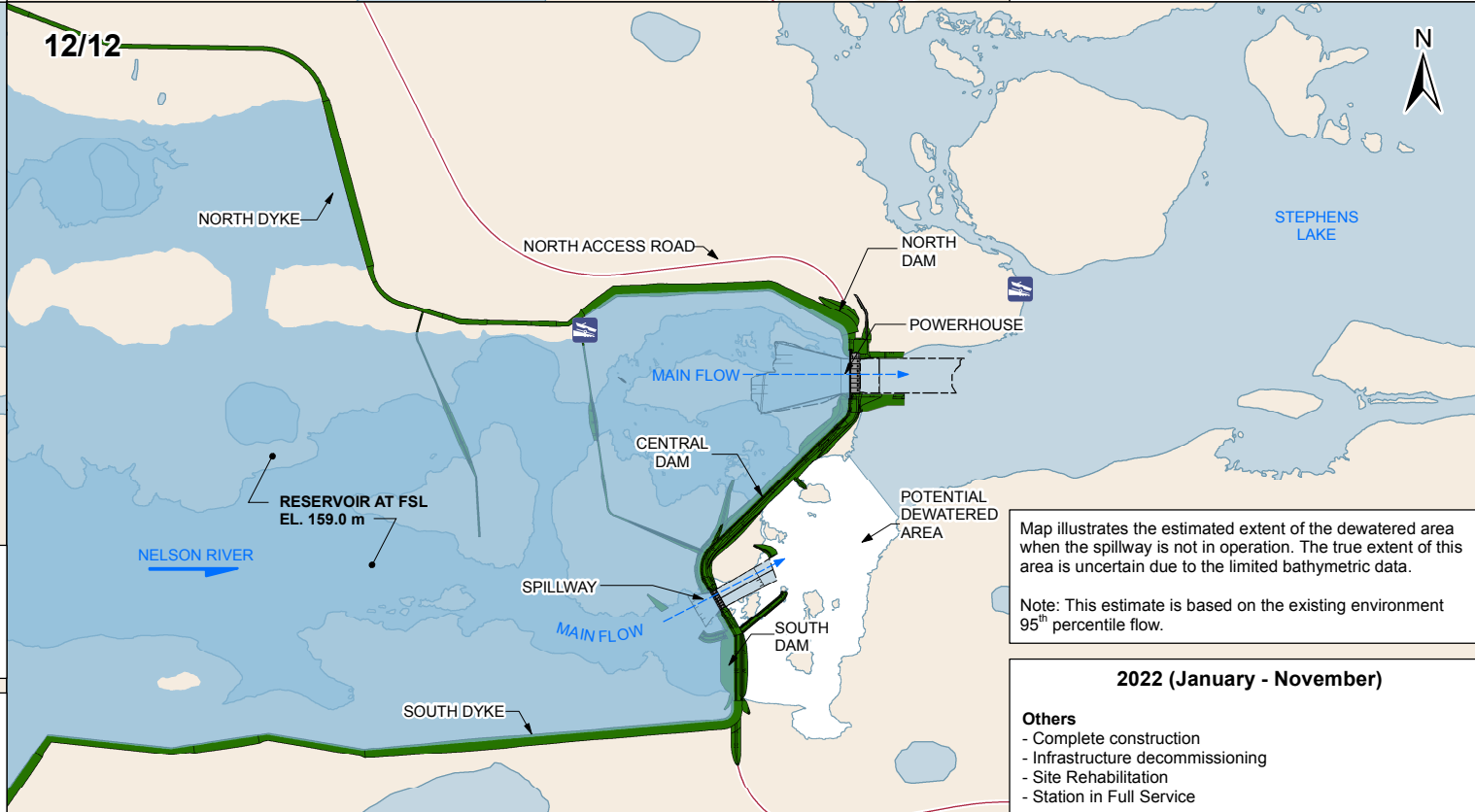
Map illustrates the estimated extent of the dewatered area when the spillway is not in operation. The true extent of this area is uncertain due to the limited bathymetric data.

Note: This estimate is based on the existing environment 95th percentile flow.

2021

Others

- Construction Infrastructure decommissioning
- Station in Full Service



Map illustrates the estimated extent of the dewatered area when the spillway is not in operation. The true extent of this area is uncertain due to the limited bathymetric data.

Note: This estimate is based on the existing environment 95th percentile flow.

2022 (January - November)

Others

- Complete construction
- Infrastructure decommissioning
- Site Rehabilitation
- Station in Full Service



DATA SOURCE:
Manitoba Hydro, KGS Acres, Government of Manitoba

CREATED BY:
Manitoba Hydro - Hydro Power Planning Department

COORDINATE SYSTEM:
UTM NAD 1983 Z15N

DATE CREATED:
14-FEB-12

REVISION DATE:
14-JUN-12

VERSION NO.:
2.0

QA/QC:
APPROVED

0 0.45 0.9 Kilometres
0 0.4 0.8 Miles

Legend

Planned/Removed Feature	Earthfill Structure (Complete)	Existing Water Surface Area
Proposed Access Road	Excavation Area	Stage II Flooded Area
Access Road	Bedrock Excavation Area	Initial Reservoir Area (159 m)
Work Area and Construction Camp	Concrete/Steel Structure	Potential Dewatered Area
Structure in Progress	Boat Launch & Barge Landing	

Construction Sequence

Years 2019 to 2022