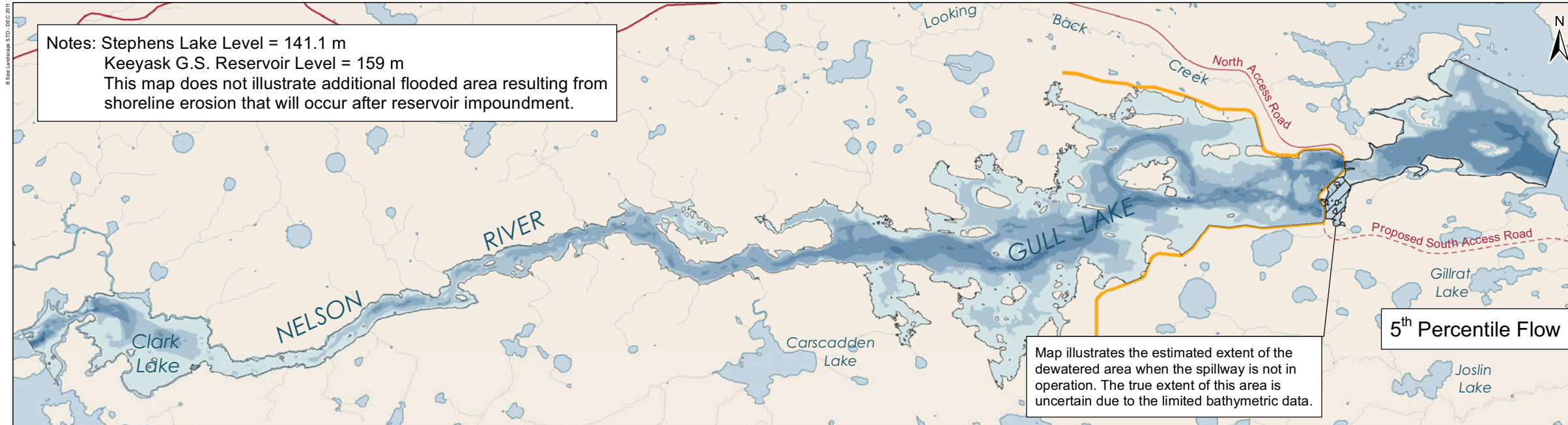


8166 - Lakeshore STD - DEC 2011

Notes: Stephens Lake Level = 141.1 m
Keyask G.S. Reservoir Level = 159 m
This map does not illustrate additional flooded area resulting from shoreline erosion that will occur after reservoir impoundment.

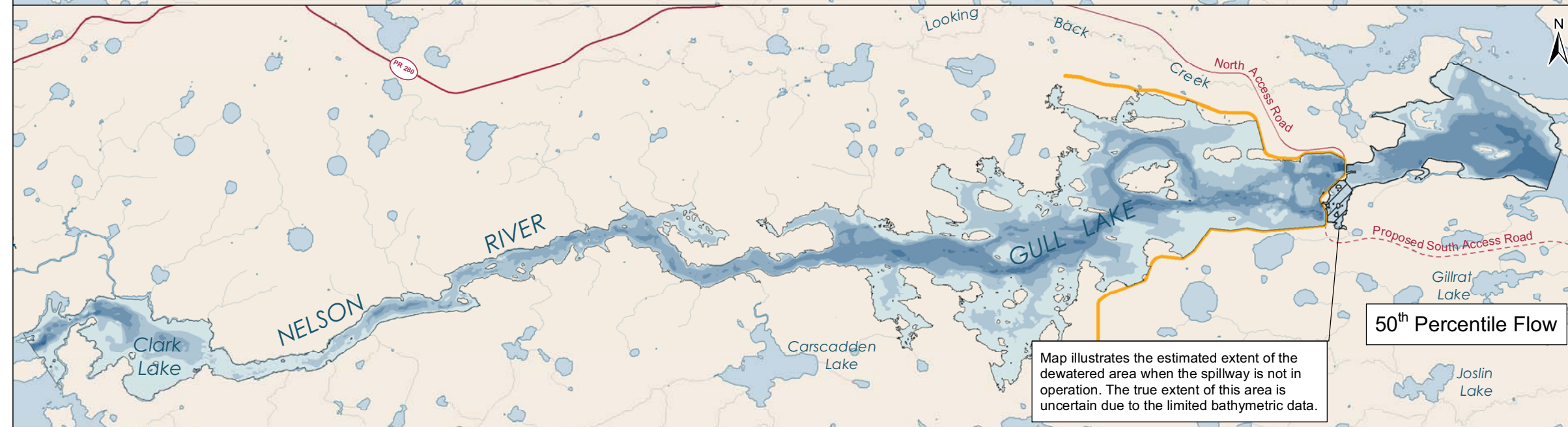


Legend

Depth (m)

- 0 - 4
- 4 - 8
- 8 - 12
- 12 - 18
- 18 - 23
- 23 - 31

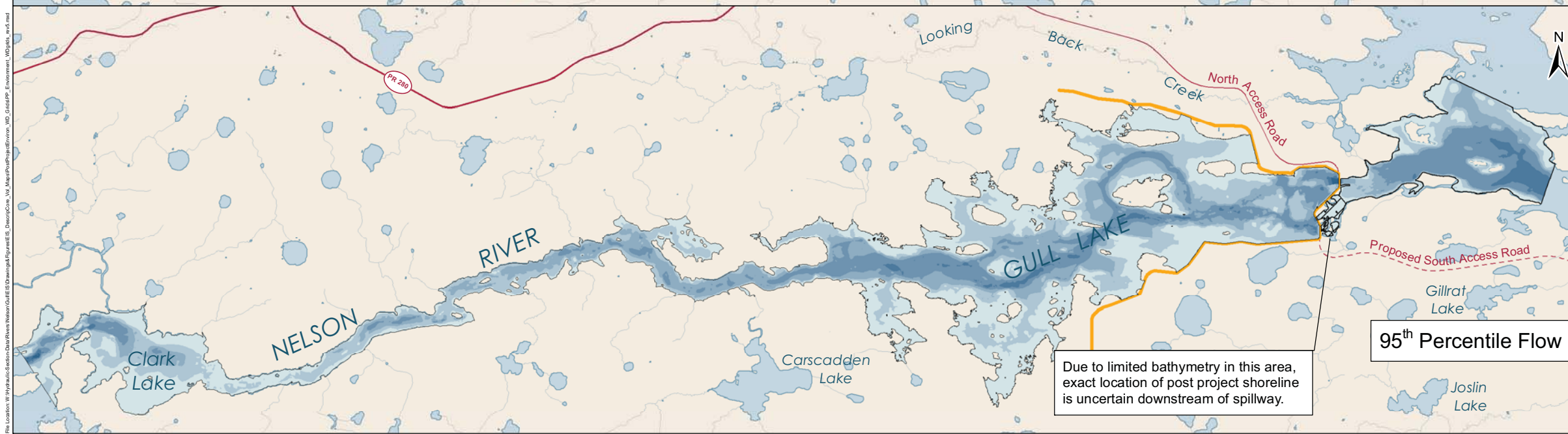
Keyask Principal Structures



DATA SOURCE:
Manitoba Hydro; Government of Manitoba; Government of Canada

CREATED BY:
Manitoba Hydro - Water Resources Department

COORDINATE SYSTEM: UTM NAD 1983 Z15N	DATE CREATED: 08-JAN-10	REVISION DATE: 23-MAY-12
		VERSION NO: 1.0 QA/QC: APPROVED



Water Depth Grid Post Project Environment