

8166 Lakeshore STD - DEC 2011  
 8166 Lakeshore STD - DEC 2011  
 8166 Lakeshore STD - DEC 2011  
 8166 Lakeshore STD - DEC 2011

Notes: Stephens Lake Level = 141.1 m  
 Keyyask G.S. Reservoir Level = 159 m  
 This map does not illustrate additional flooded area resulting from shoreline erosion that will occur after reservoir impoundment.

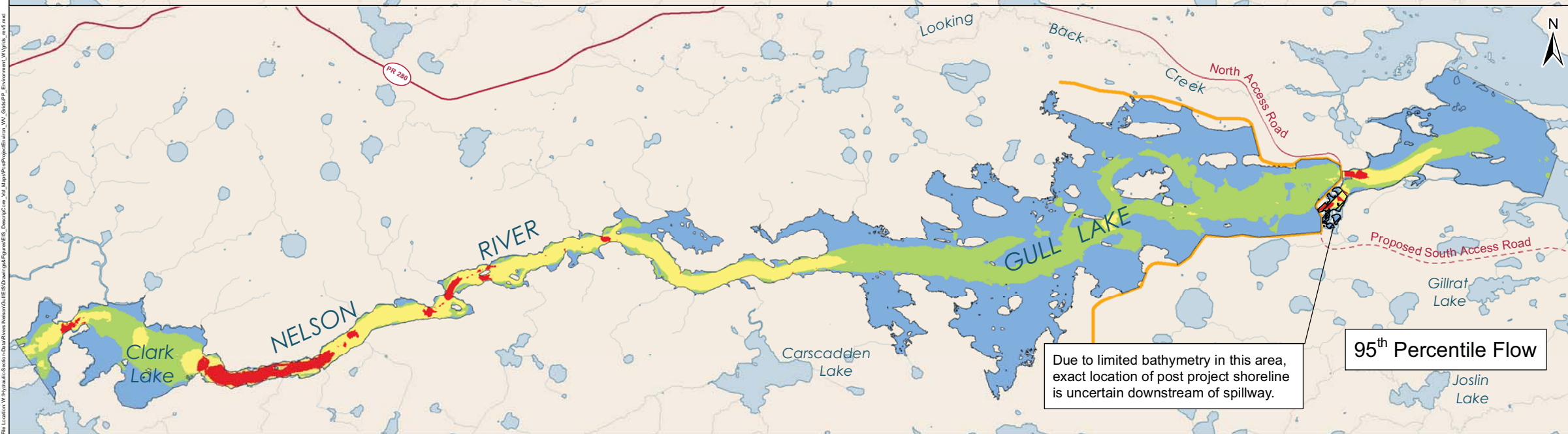
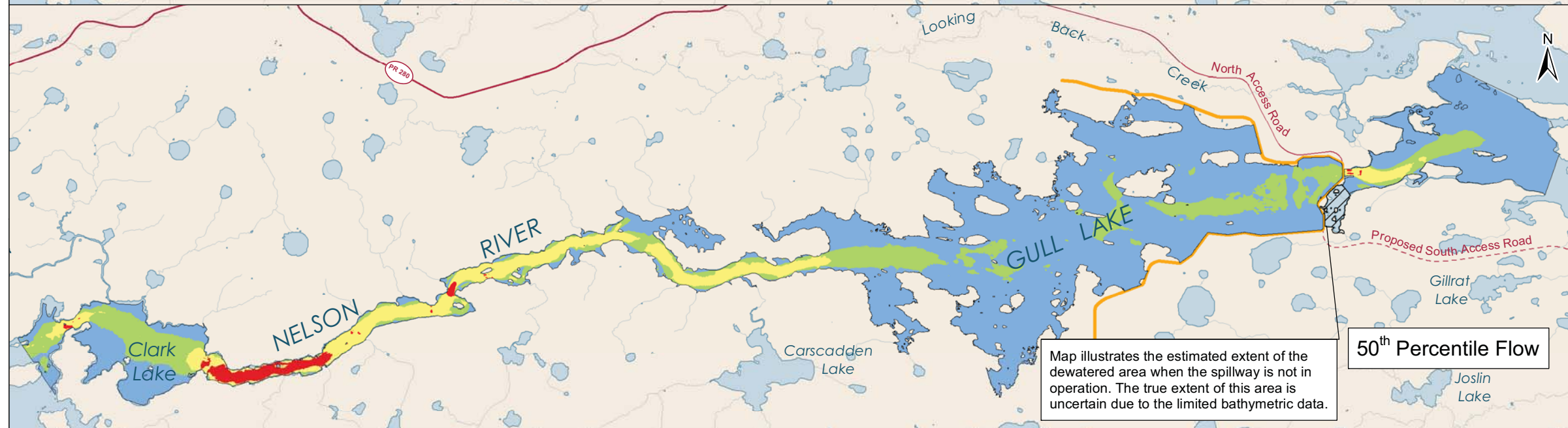
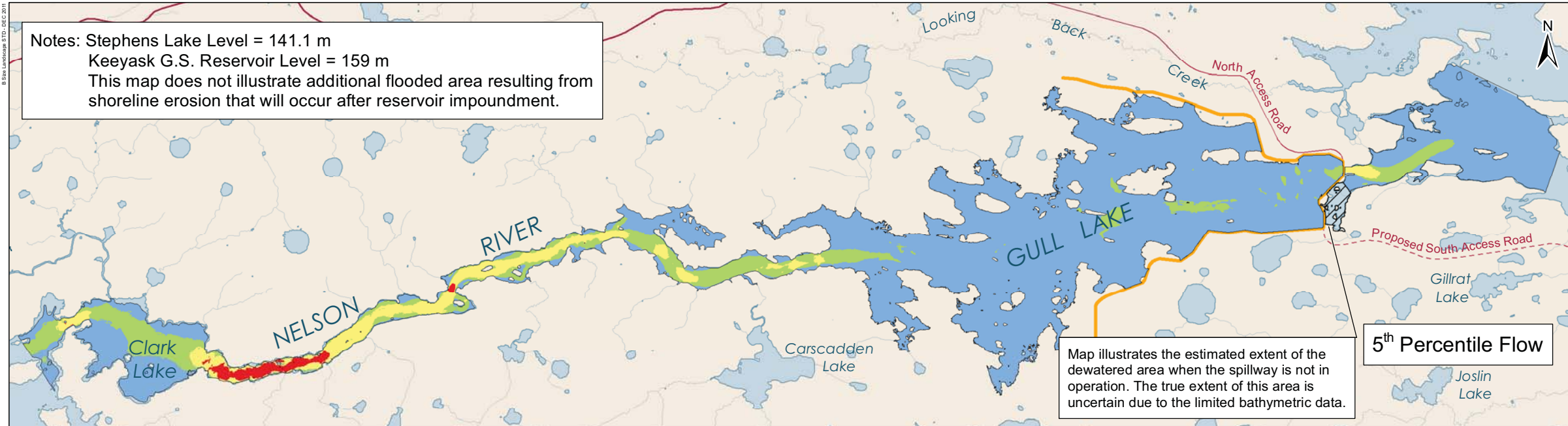


**Legend**

**Velocity (m/s)**

- Standing (0 - 0.2)
- Low (0.2 - 0.5)
- Moderate (0.5 - 1.5)
- High (>1.5)

Keeyask Principal Structures



DATA SOURCE:  
Manitoba Hydro; Government of Manitoba; Government of Canada

CREATED BY:  
Manitoba Hydro - Water Resources Engineering Department

COORDINATE SYSTEM: UTM NAD 1983 Z15N	DATE CREATED: 08-JAN-10	REVISION DATE: 23-MAY-12
	VERSION NO: 1.0	QA/QC: APPROVED

## Water Velocity Grids Post Project Environment