

Reservoir Impoundment

For September 4, 2020

Reservoir Impoundment at Keeyask started August 31, 2020. Impoundment is the stage of the Keeyask Generation Project where water will be held back upstream of the site to create a reservoir.

The rise of water levels upstream - within the expected area - will be quite slow, averaging 0.5 metres (about two feet) per day. However, water will flow into lower areas as soon as their surrounding landscape will allow; these localized areas may fill in quickly as they become accessible to the rising water level. This means that localized areas may appear to show a more rapid rise in water level.

Water levels will continue to rise gradually until impoundment is complete. Impoundment is expected to last five to seven days.

Water Levels

Split Lake Level		
Sept 2	Sept 3	Forecast for Sept 4
168.35 m 552.3 ft	168.30 m 552.2 ft	168.20 to 168.30 m 551.8 to 552.2 ft

Clark Lake Level		
Sept 2	Sept 3	Forecast for Sept 4
167.81 m 550.6 ft	167.77 m 550.4 ft	167.70 to 167.80 m 550.2 to 550.5 ft

Gull Lake Level		
Sept 2	Sept 3	Forecast for Sept 4
157.64 m 517.2 ft	158.14 m 518.8 ft	158.3 to 158.8 m 519.3 to 521.0 ft

Level at Keeyask GS (inside the water-up area)		
Sept 2	Sept 3	Forecast for Sept 4
157.5m 516.7 ft	158.0 m 518.3 ft	158.2 to 158.8 m 518.4 to 521.0 ft

How are water levels raised during impoundment?

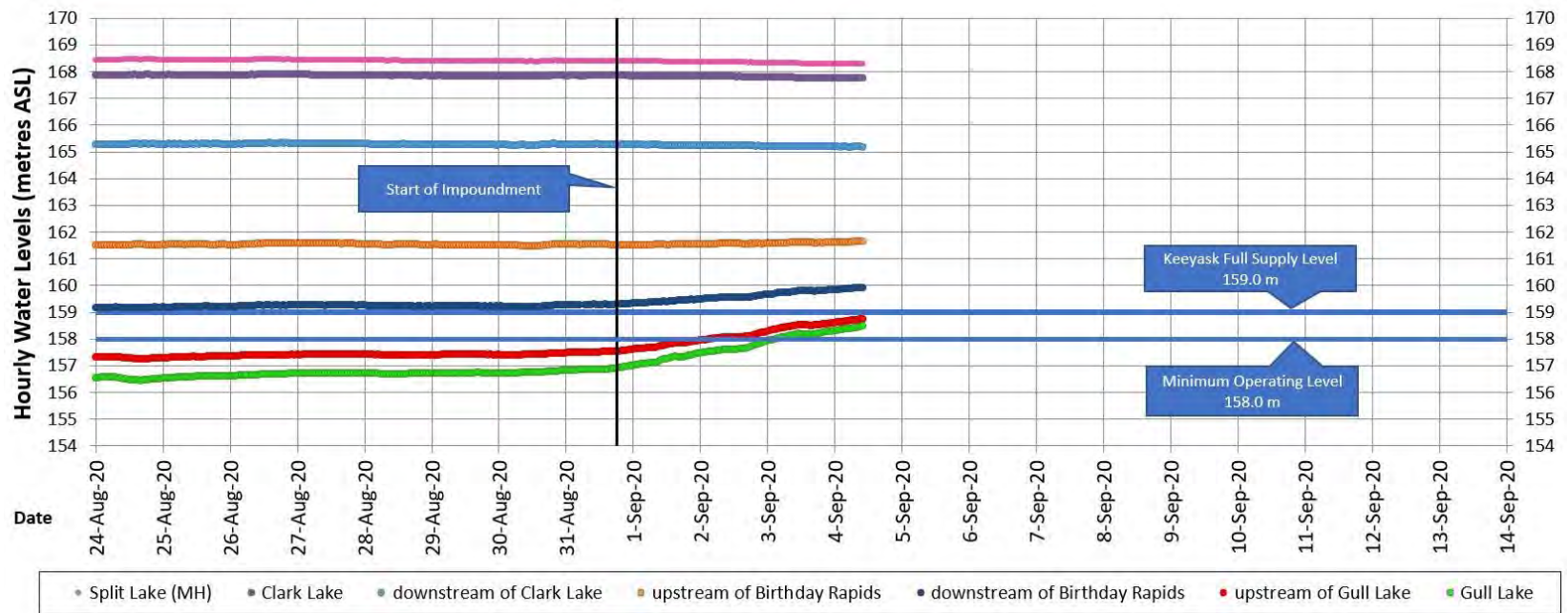
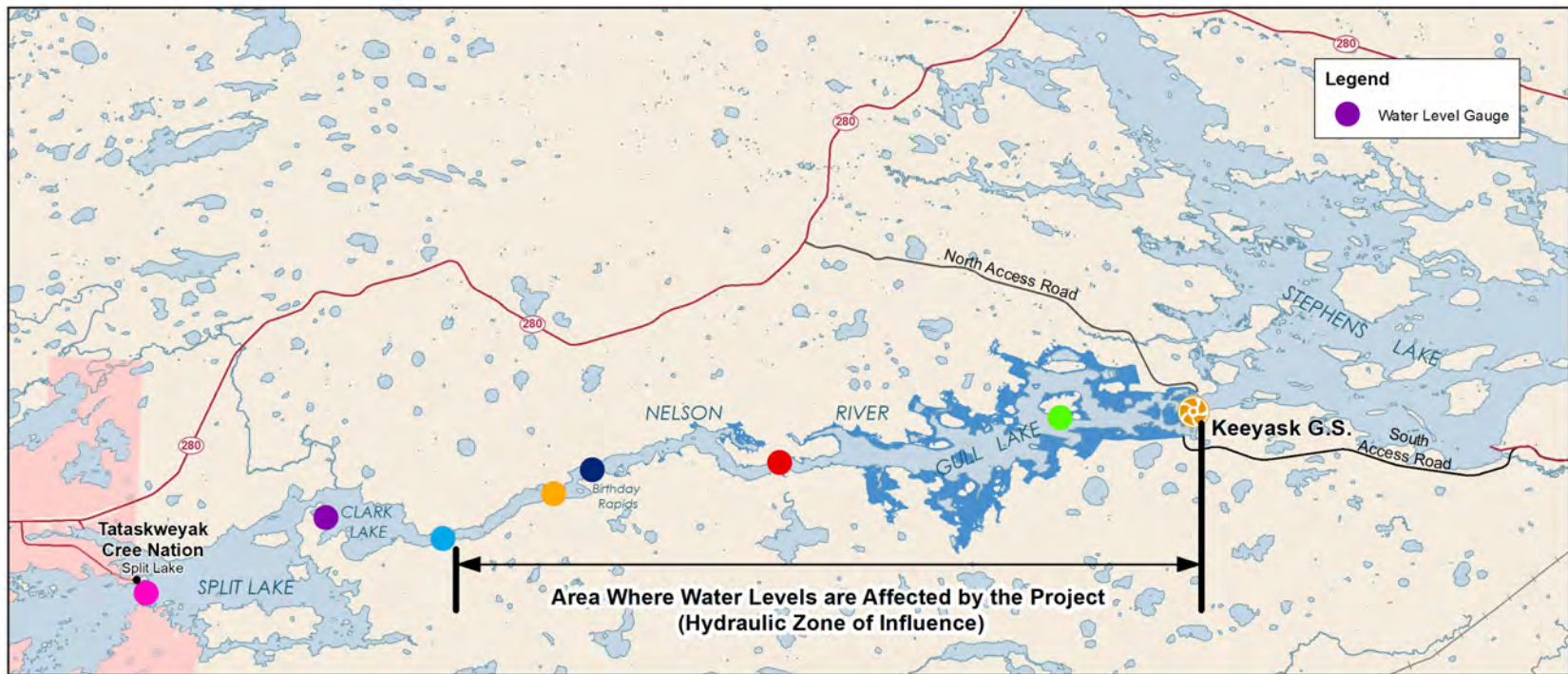
The flow of the Nelson River has been passing through the Keeyask spillway since August 2018. Water levels upstream of the spillway and in Gull Lake are controlled by the spillway gates. The gates will be lowered during impoundment to reduce the flow resulting in a slow increase in water levels on Gull Lake to create the planned reservoir. Increases will be smaller at locations further upstream of Gull Lake with **no increases expected on Clark Lake or Split Lake.**

How are water levels monitored?

Water levels are monitored at seven sites from Split Lake to the Keeyask Generating Station. Water levels are shown on the following page and will be updated daily.

STAY SAFE: Due to rapidly changing conditions avoid all travel on the Nelson River from Clark Lake outlet to the Keeyask Site during and immediately after impoundment.





After impoundment, the reservoir will extend approximately 42 kilometres from the Keeyask Generating Station to about 3 kilometres downstream of the outlet of Clark Lake.

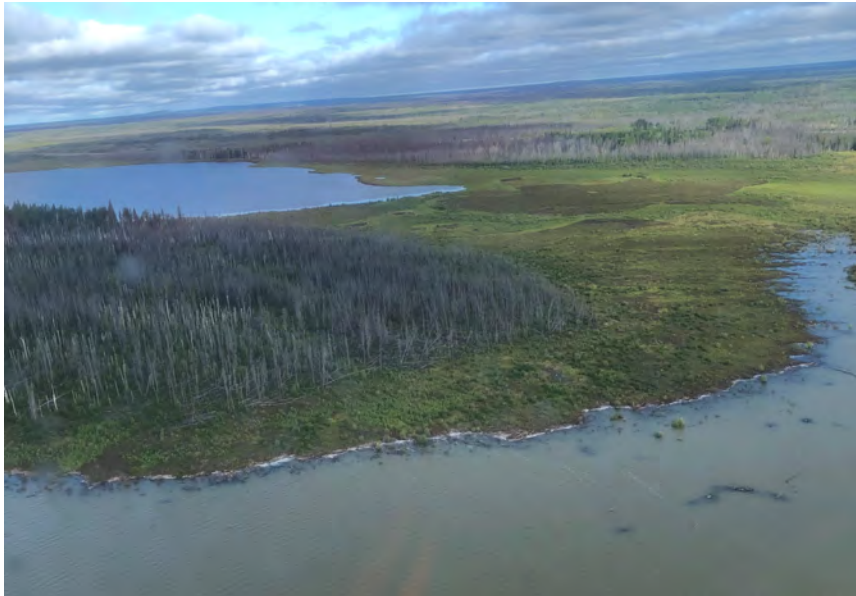
Reservoir Impoundment Monitoring

The water level in the Keeyask reservoir (Gull Lake) is now within the normal operating range of 158 to 159 metres (518.4 to 521.7 feet). It is expected that the reservoir water level will fluctuate within this range going forward. **Water level monitoring data shows that there have been no changes to water levels on Split Lake and Clark Lake due to the impoundment of the Keeyask Generating Station reservoir.**

Surveys by helicopter, boat, and truck were done in the days leading up to impoundment, and are being continued during impoundment, to monitor wildlife and waterway conditions in the reservoir area. To date, no unexpected effects to wildlife have been noted.

Monitoring of beaver lodges within the reservoir area continued. Canada geese are starting to migrate through the area, with around 100 geese observed during the daily surveys. Another bald eagle was observed perched on a nesting platform.

All four partner community ATK monitoring staff participated in helicopter surveys during impoundment. Planning is underway to involve ATK staff in additional monitoring activities. Boat and truck monitoring at site continues by technical science monitoring staff.



Little Gull Lake (top left) and Gull Lake (bottom) prior to impoundment.
Photo taken Aug 25, 2020



Little Gull Lake (bottom) and Gull Lake (top right)
Photo taken Sept 3, 2020



Nap Creek
Photo taken Sept 3, 2020



Portage Creek
Photo taken Sept 3, 2020



Two Goose Creek
Photo taken Sept 3, 2020



Sandhill cranes on an island.
Photo taken Aug 30, 2020



Driving along the North Dyke to look for wildlife.
Photo taken Sept 3, 2020



WLFN ATK monitor (left) and YFFN ATK monitor (above) participating in helicopter surveys. *Photos taken Sept 3, 2020*

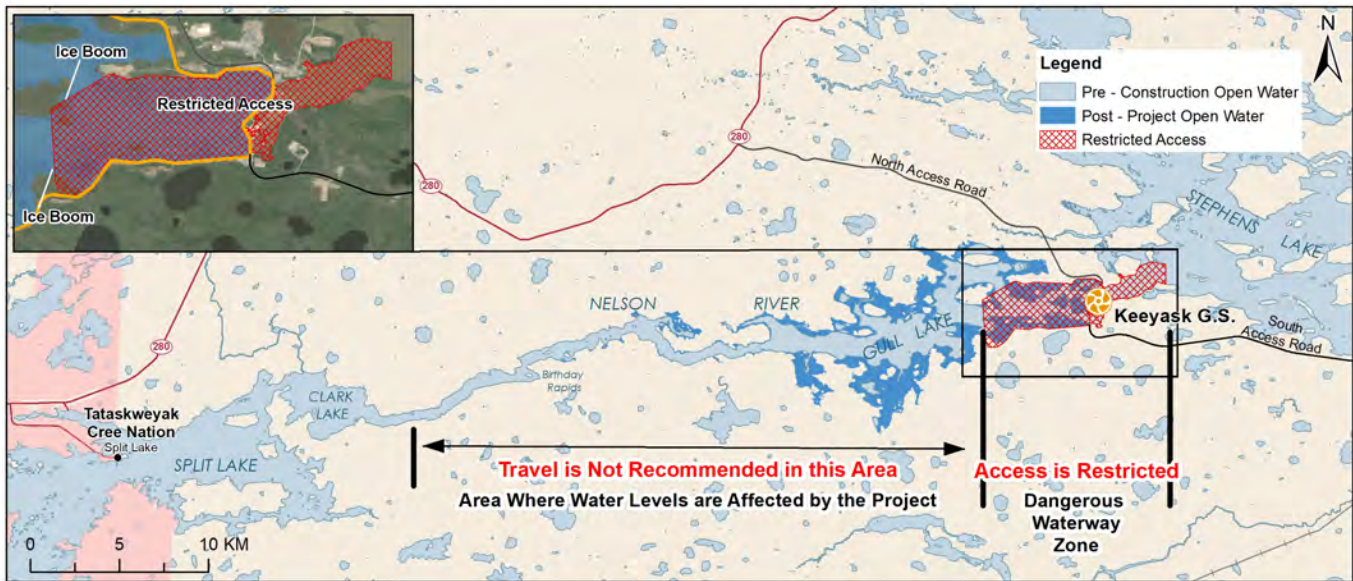


Bank swallow nesting site, now empty, with some nesting material.
Photo taken Sept 3, 2020



Looking west from Pahwaybanic Bay towards Birthday Rapids.
 Photo taken Sept 3, 2020

Stay Safe: Travel is not recommended in the area shown below during and immediately after impoundment.



Visit these websites for more information on:

Impoundment: keyeyask.com

Water levels and flows: www.hydro.mb.ca/waterlevels

Weather: https://weather.gc.ca/forecast/canada/index_e.html?id=MB

If you have any questions or concerns, please contact your KCN Site Rep or Diana Mager at dmager@hydro.mb.ca

