

# Reservoir Impoundment

September 1, 2020

## Reservoir Impoundment at Keeyask started August 31, 2020

Impoundment is the stage of the Keeyask Generation Project where water will be held back upstream of the site to create a reservoir.

The rise of water levels upstream - within the expected area - will be quite slow, averaging 0.5 metres (about two feet) per day. However, water will flow into lower areas as soon as their surrounding landscape will allow; these localized areas may fill in quickly as they become accessible to the rising water level. This means that localized areas may appear to show a more rapid rise in water level.

Water levels will continue to rise gradually until impoundment is complete. Impoundment is expected to last five to seven days.

## Water Levels

Split Lake Level		
August 30	August 31	Forecast for Sept 1
168.39 m 552.5 ft	168.40 m 552.5 ft	168.35 to 168.45 m 552.3 to 552.7 ft

Clark Lake Level		
August 30	August 31	Forecast for Sept 1
167.83 m 550.6 ft	167.84 m 550.7 ft	167.8 to 167.9 m 550.5 to 550.9 ft

Gull Lake Level		
August 30	August 31	Forecast for Sept 1
156.75 m 514.3 ft	156.87 m 514.4 ft	157.1 to 157.6 m 515.4 to 517.1 ft

Level at Keeyask GS (inside the water-up area)		
August 30	August 31	Forecast for Sept 1
156.6 m 513.8 ft	156.68 m 514.0 ft	156.9 to 157.5 m 514.8 to 516.7 ft

## How are water levels raised during impoundment?

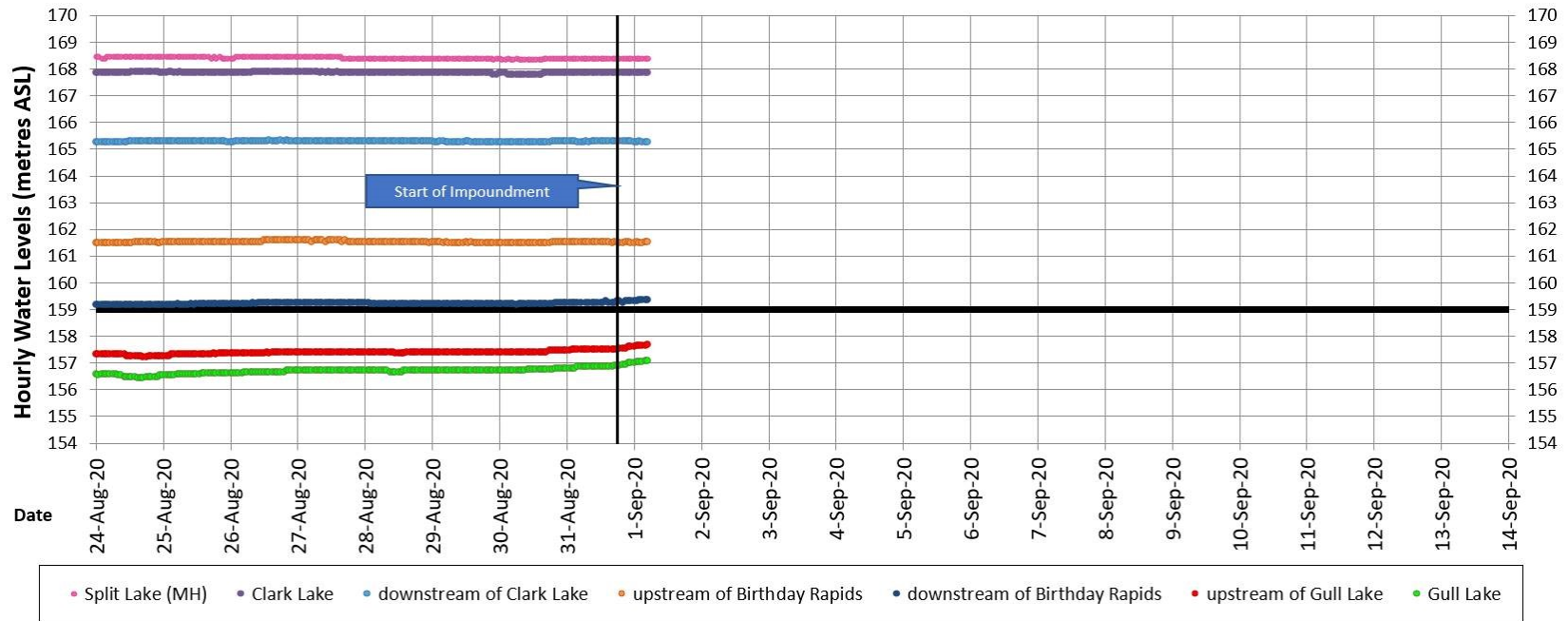
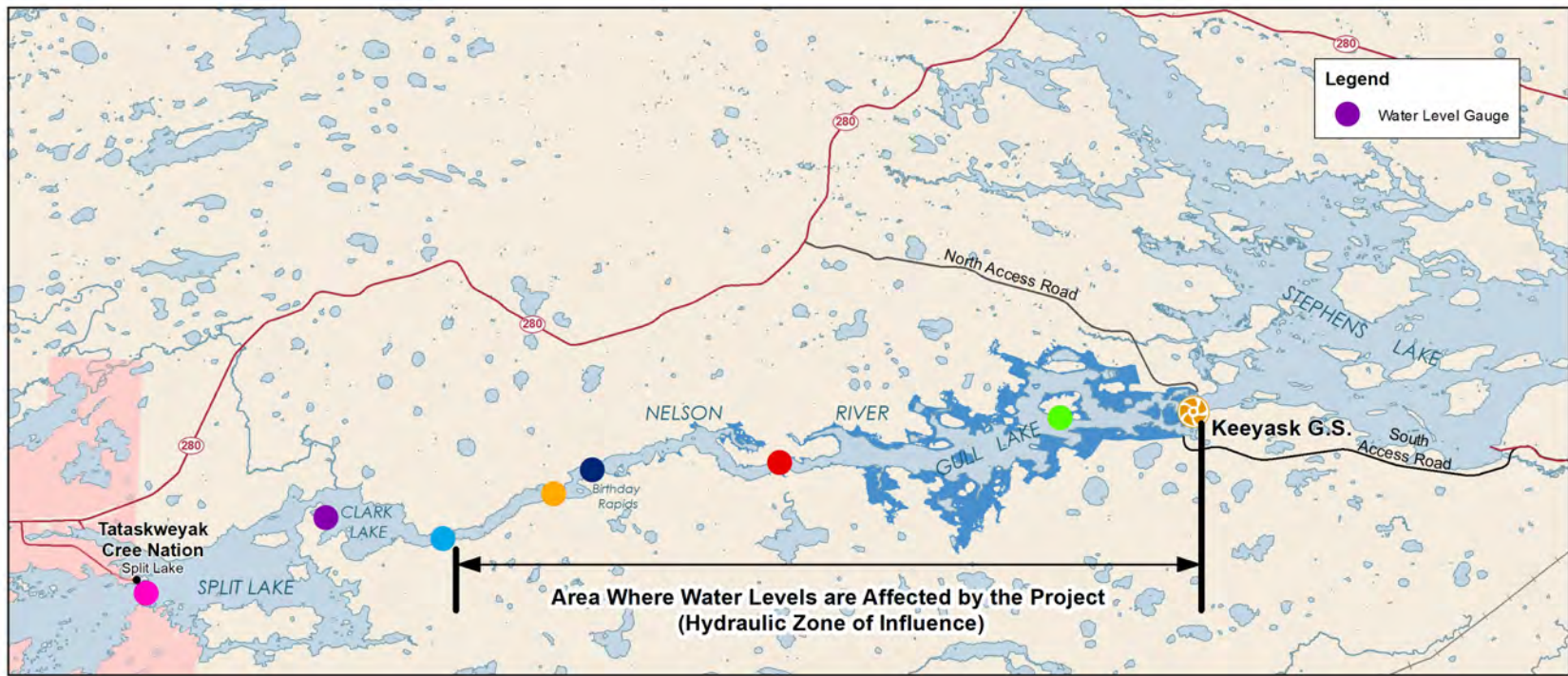
The flow of the Nelson River has been passing through the Keeyask spillway since August 2018. Water levels upstream of the spillway and in Gull Lake are controlled by the spillway gates. The gates will be lowered during impoundment to reduce the flow resulting in a slow increase in water levels on Gull Lake to create the planned reservoir. Increases will be smaller at locations further upstream of Gull Lake with **no increases expected on Clark Lake or Split Lake.**

## How are water levels monitored?

Water levels are monitored at seven sites from Split Lake to the Keeyask Generating Station. Water levels are shown on the following page and will be updated daily.

**STAY SAFE:** Due to rapidly changing conditions avoid all travel on the Nelson River from Clark Lake outlet to the Keeyask Site during and immediately after impoundment.





After impoundment, the reservoir will extend approximately 42 kilometres from the Keeyask Generating Station to about 3 kilometres downstream of the outlet of Clark Lake.

Birthday Rapids



Nelson River upstream of Gull Lake



Spillway and Bird island



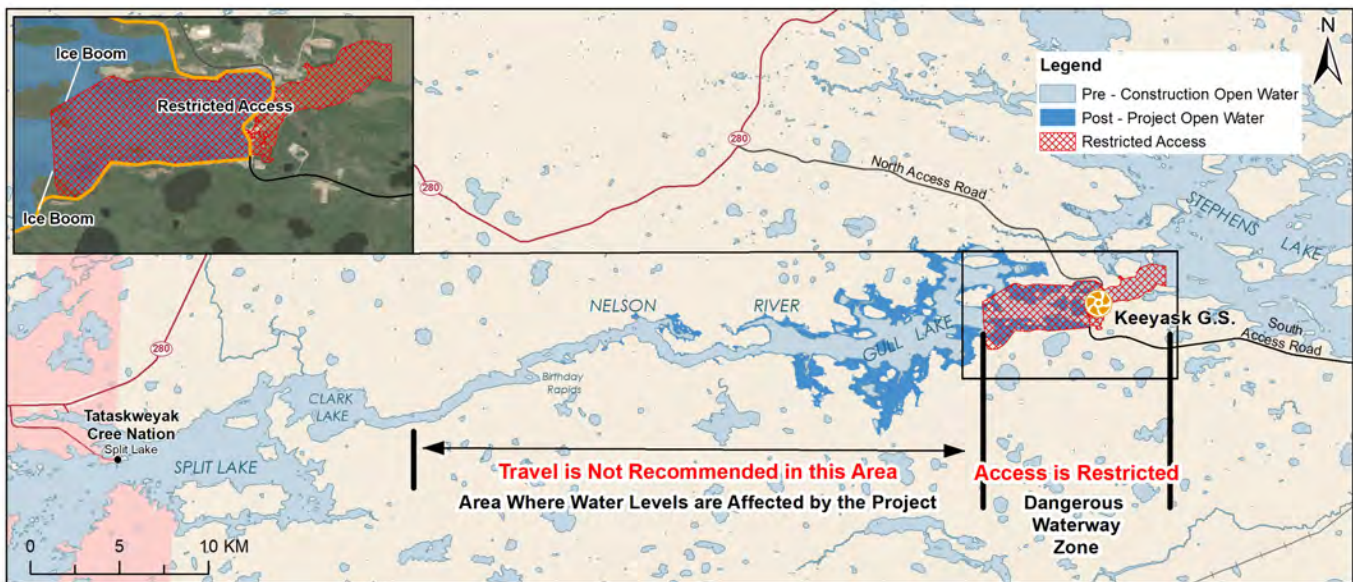
Photos were taken  
August 25, 2020

## Reservoir Impoundment Monitoring

Daily surveys by helicopter, boat, and truck are planned throughout the period of impoundment to observe the changing water conditions and watch for wildlife. Surveys will be focused in and around the future reservoir area, and observations will be made on any unexpected effects during impoundment.

ATK monitoring staff from each of the partner First Nations have been invited to participate in the helicopter surveys. Due to the current increase in pandemic protocols in the local communities and at the Keeyask site, boat and truck monitoring will be done by technical science monitoring staff.

**Stay Safe: Travel is not recommended in the area shown below during and immediately after impoundment.**



Visit these websites for more information on:

Impoundment: [keeyask.com](http://keeyask.com)

Water levels and flows: [www.hydro.mb.ca/waterlevels](http://www.hydro.mb.ca/waterlevels)

Weather: [https://weather.gc.ca/forecast/canada/index\\_e.html?id=MB](https://weather.gc.ca/forecast/canada/index_e.html?id=MB)

If you have any questions or concerns, please contact your KCN Site Rep or Diana Mager at [dmager@hydro.mb.ca](mailto:dmager@hydro.mb.ca)

